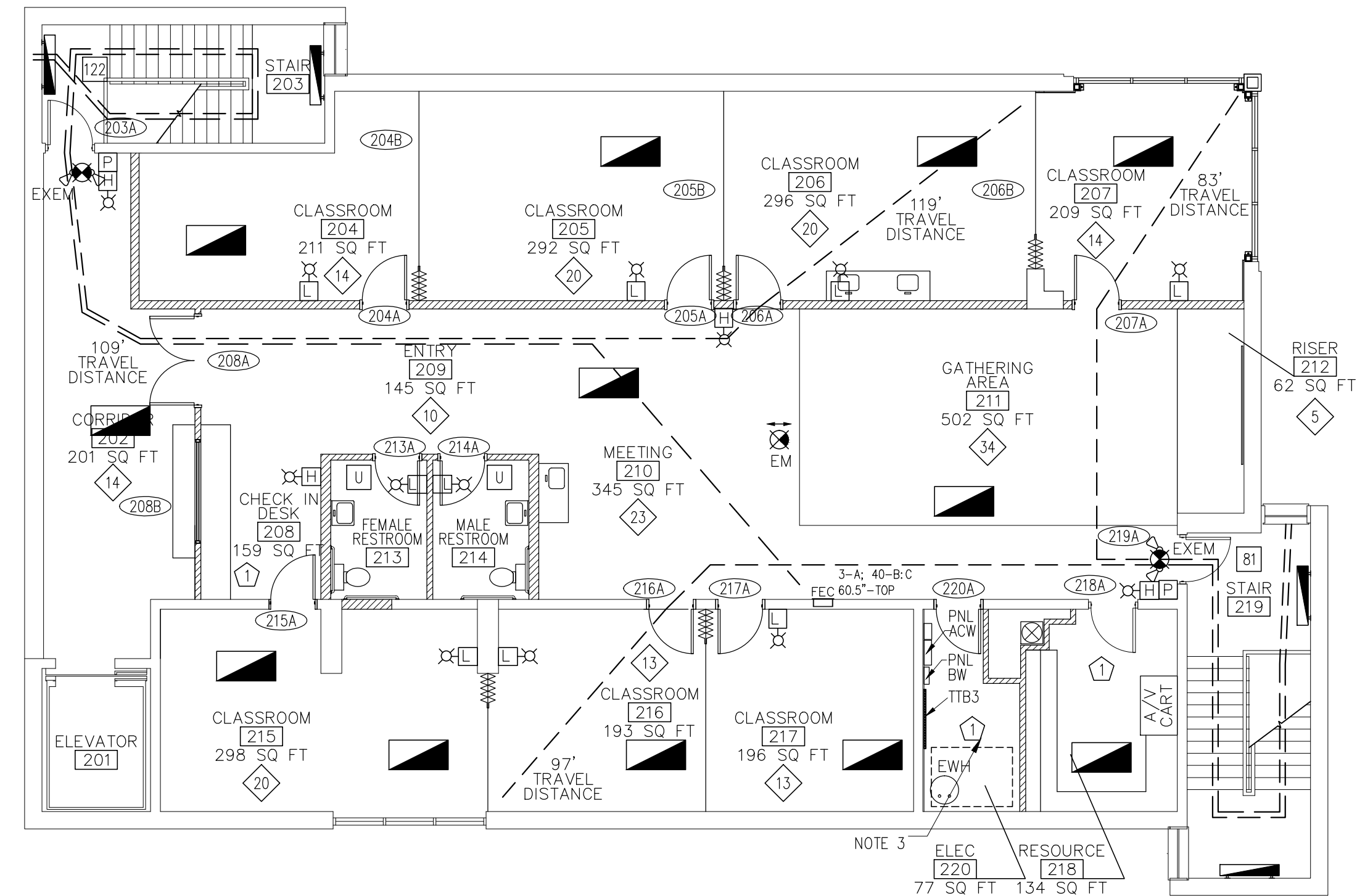
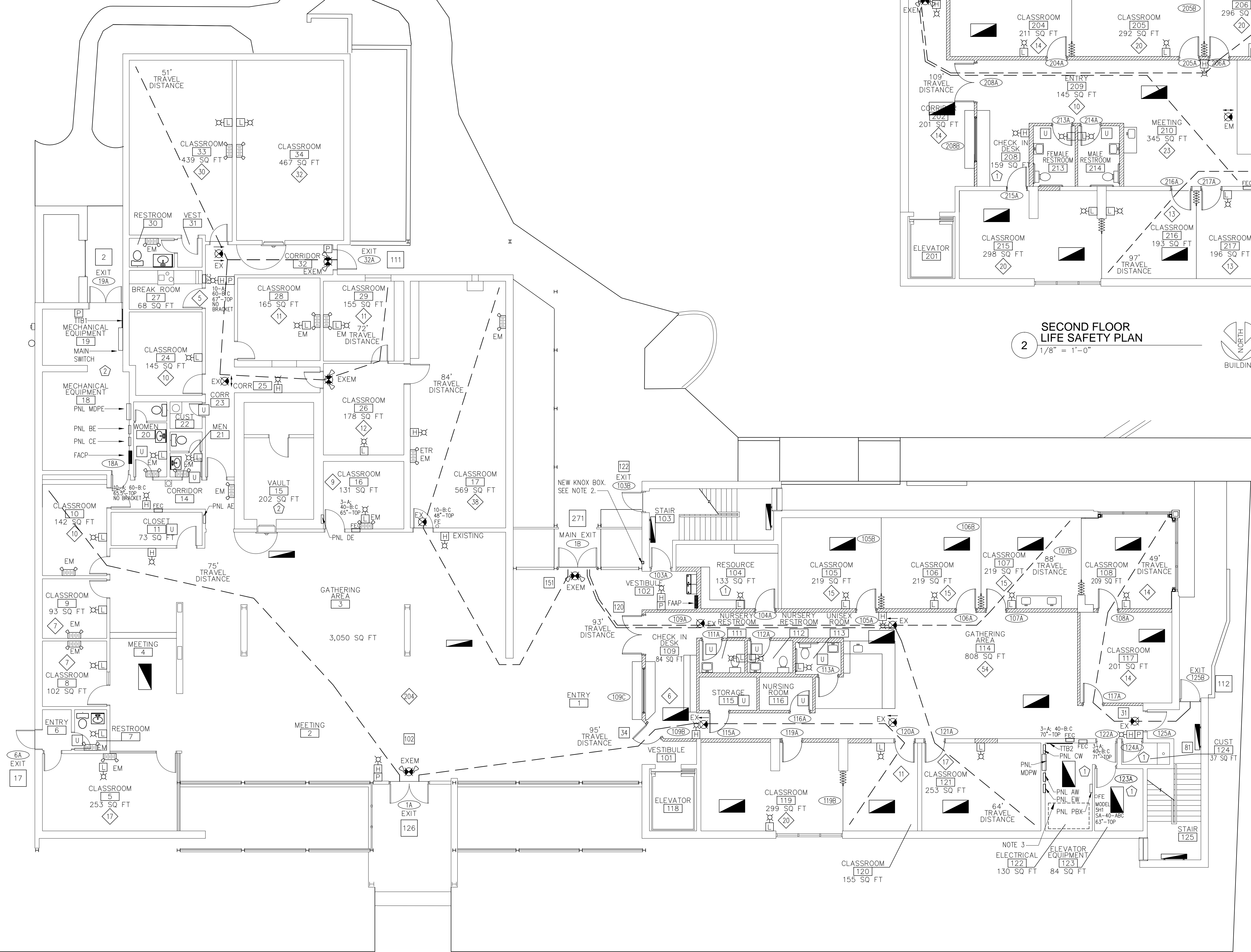


RENOVATIONS FOR
THE FIRST BAPTIST CHURCH
511 ST. JOHNS AVENUE
PALATKA, FLORIDA

SHEET TITLE
FIRST AND SECOND FLOOR
LIFE SAFETY PLANS



2 SECOND FLOOR
LIFE SAFETY PLAN
1/8" = 1'-0"



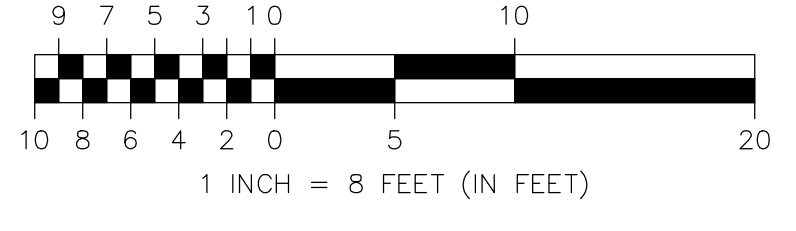
1 FIRST FLOOR
LIFE SAFETY PLAN
1/8" = 1'-0"



FIRST FLOOR
LIFE SAFETY PLAN NOTES:

- 1. LIFE SAFETY FLOOR PLAN IS SHOWN WITH ADDITIVE ALTERNATE CLASSROOMS 108 AND 207. SEE ADDITIVE ALTERNATE NO. 1 FLOOR PLANS 3, A1.1.
- 2. FIELD VERIFY LOCATION OF NEW KNOX BOX WITH FIRE MARSHAL. SEE SHEET A1.1.
- 3. THIS AREA IS TENTATIVE LOCATION FOR FIRE-SPRINKLER RISER AND ASSOCIATED VALVES AND PIPING. SEE SHEET A1.1.

GRAPHIC SCALE



EXITING

EXIT	TYPE	OCCUPANTS REQUIRED		OCCUPANTS PROVIDED
		ONE STORY BUILDING	TWO STORY BUILDING	
1A	EXIT	126	34	160 66" = 220
1B	MAIN EXIT	151	120	271 66" = 330
6A	SUITE EXIT	17		17 32" = 165
19A	ROOM EXIT	2		2 54" = 270
32A	EXIT	111		111 33" = 165
103B	EXIT		122	122 33" = 165
125B	EXIT		112	112 33" = 165
TOTALS		407	388	795 1,480

TOTAL OCCUPANTS ONE STORY BUILDING: 407
TOTAL OCCUPANTS TWO STORY BUILDING: 388
TOTAL OCCUPANTS: 795
EGRESS REQUIRED PER OCCUPANT
0.3 INCHES AT STAIRS = 110 OCCUPANTS
36" DOOR (33" CLEAR) = 220 OCCUPANTS
PAIR OF 36" DOORS (66" CLEAR) = 220 OCCUPANTS
0.2 INCHES AT LEVEL OR OTHER EGRESS COMPONENTS (RAMPS)
36" DOOR (33" CLEAR) = 165 OCCUPANTS
PAIR OF 30" DOORS (54" CLEAR) = 270 OCCUPANTS
PAIR OF 36" DOORS (66" CLEAR) = 330 OCCUPANTS

LIFE SAFETY LEGEND

SYMBOL	DESCRIPTION
50	OCCUPANT LOAD PER DOOR
U	OCCUPANT LOAD NOT COUNTED IN TOTAL
10	ROOM OCCUPANT LOAD AT 15 NET SQ. FT. PER PERSON
1	ROOM OCCUPANT LOAD AT 300 GROSS SQ. FT. PER PERSON

ELECTRICAL LEGEND

	EMERGENCY ENCLOSED FLUORESCENT LUMINAIRE
	EMERGENCY BATTERY PACK WITH TWO INTEGRAL LIGHTS
	EXIT LIGHT
	EMERGENCY / EXIT LIGHT COMBO
	PANELBOARD (SEE E0.1 PANEL SCHEDULES)
	FIRE ALARM PULL STATION
	FIRE ALARM STROBE DEVICE
	FIRE ALARM HORN STROBE
	FIRE ALARM ANNUNCIATOR PANEL
	FIRE ALARM CONTROL PANEL
	FIRE EXTINGUISHER
	FIRE EXTINGUISHER IN CABINET