

FOR SALE OR LEASE

ASKING \$1.19M



55 JEFFERSON BOULEVARD WARWICK, RI 02886

Prime location on Jefferson Blvd. — perfectly situated for convenient access to local amenities and major highways.

ASSET SNAPSHOT

5,400 sq ft, 3 levels	Building electric updated in 2019
Year Built - 1985	
Zoning - Industrial District	Building heat updated in 2016.
Parking- 30 spaces	
2 ADA Compliant Ramps	

Available for Lease:

1st floor - 1800 sq ft, Asking \$2,000/month

Garden floor - 1400 sq ft, Asking \$1,400/month



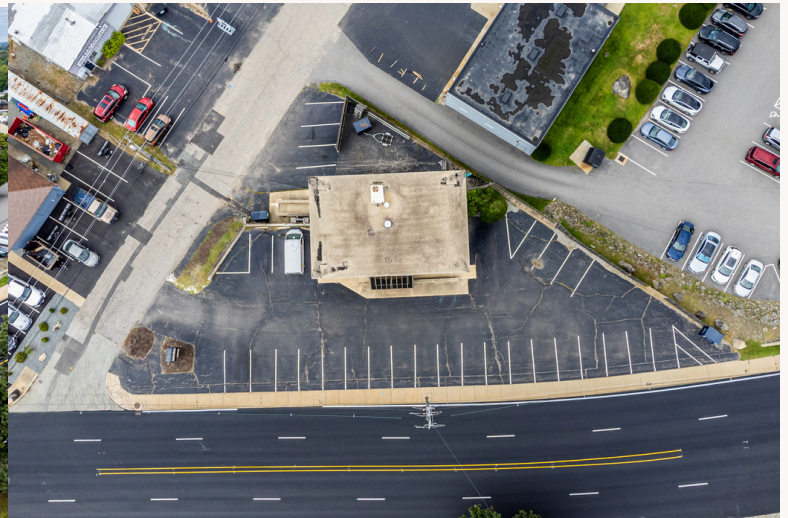
MASTERY
COMMERCIAL
ADVISORS

Joanne Chang
Joanne@mcacommercial.com
617-429-4264









MASTERY
COMMERCIAL
ADVISORS

Joanne Chang
Joanne@mcacommercial.com
617-429-4264