

For Lease - Office Space

2124 Penn Avenue

Pittsburgh, PA 15222



Creative Office Space • Exposed Brick & High Ceilings • Strip District



Property Features

- 2,500 - 23,500 SF of Move-In Ready Office Space:
 - 7,000 SF on the top/5th Floor: Open plan, conference room, kitchenette, and private restroom with shower
 - 7,000 SF on 4th Floor
 - 7,000 SF on 3rd Floor | Can be subdivided
 - 2,500 SF on 2nd Floor
- Open floor plans | Can be built-out to accommodate various layouts
- Competitive lease rates
- Recent capital improvements include upgraded lobby, elevator and electric panels
- Storage is available in the basement level of the Building
- Passenger and freight elevators are available for Tenant's use
- Fully sprinklered Building
- Located in the heart of the Strip District
- Adjacent surface lot offers parking spaces at \$175 per month
- Amenities include numerous restaurants including Luke Wholey's Wild Alaskan Grille, Bar Marco, DeLuca's Diner, and Kelly O's Diner in the Strip; various retailers including Grandpa Joe's Candy Shop, Hot Haute Hot, Yinzers in the Burgh, Pittsburgh Popcorn Co., Stamoolis Brothers Co., and Pennsylvania Macaroni Co.

For More Information, Please Contact:

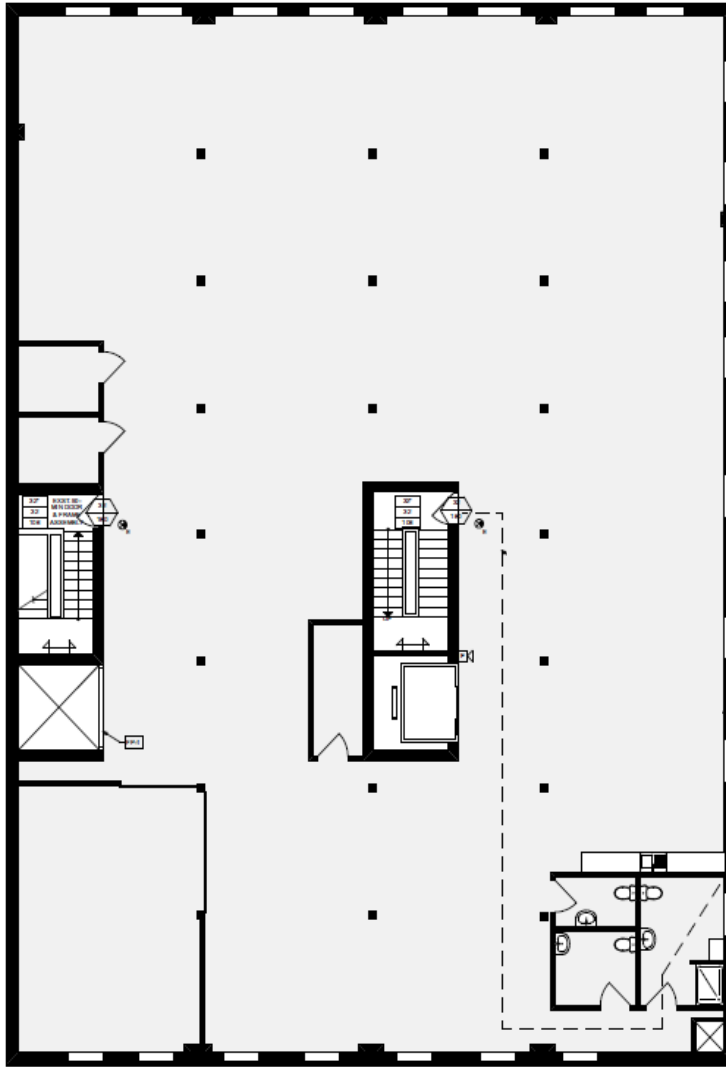
Jessica Jarosz
jjaroszc@century-realty.com
412.235.7233

Kaila McAllister
kmcallister@century-realty.com
412.235.7233

Chad Kesich
ckesich@century-realty.com
412.235.7233

960 Penn Avenue, Suite 1001 - Pittsburgh, PA 15222
Century Centre - 1233 Main Street, Suite 1500 - Wheeling, WV 26003
412.235.7233 - www.century-realty.com

5th Floor Plan - 7,000 SF



Ownership has provided the property information to the best of its knowledge, but Century Realty does not guarantee that all information is accurate. All property information should be confirmed before any completed transaction.

For More Information, Please Contact:

Jessica Jarosz
jjarosz@century-realty.com
412.235.7233

Kaila McAllister
kmcallister@century-realty.com
412.235.7233

Chad Kesich
ckesich@century-realty.com
412.235.7233