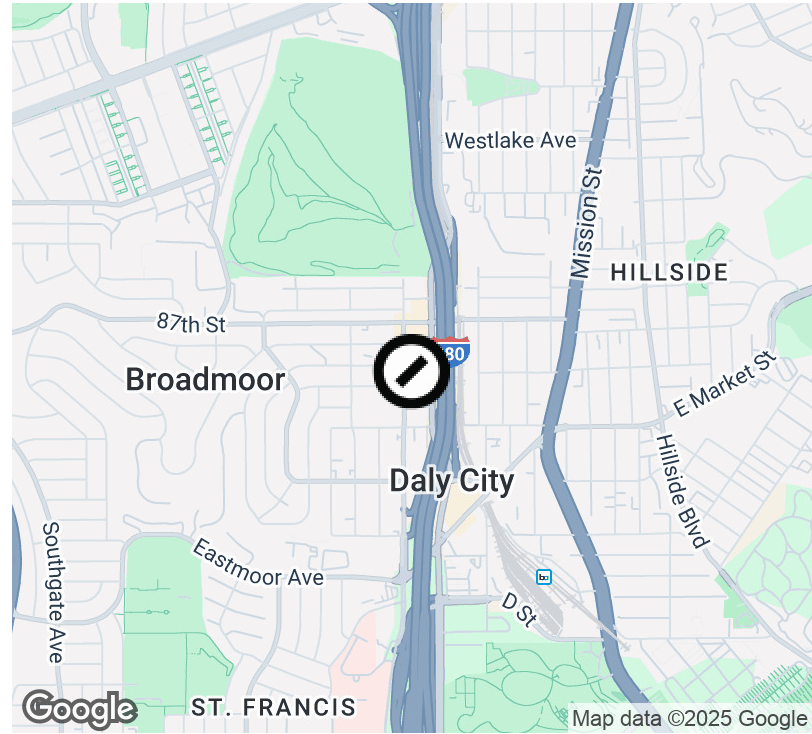


# Cedar Hill Offices - 295 89th Street, Daly City



## Offering Summary

Lease Rate:	\$2.85 SF/month (Full Service)
Building Size:	24,072 SF
Available SF:	447 - 2,824 SF
Lot Size:	11,326 SF
Year Built:	1985

## Currently Available

- Suite 104 @ 556 SF. Available now. (Can combine with Suite 105)
- Suite 105 @ 1,821 SF. Available now. (Can combine with Suite 104)
- Suite 309 @ 447 SF. Available now.
- Recent common area upgrades.
- Convenient freeway access.
- Proximity to local government.
- Conveniently located between San Francisco & the Peninsula.
- Secure parking.

## Property Highlights

**David Bell**  
Junior Vice President

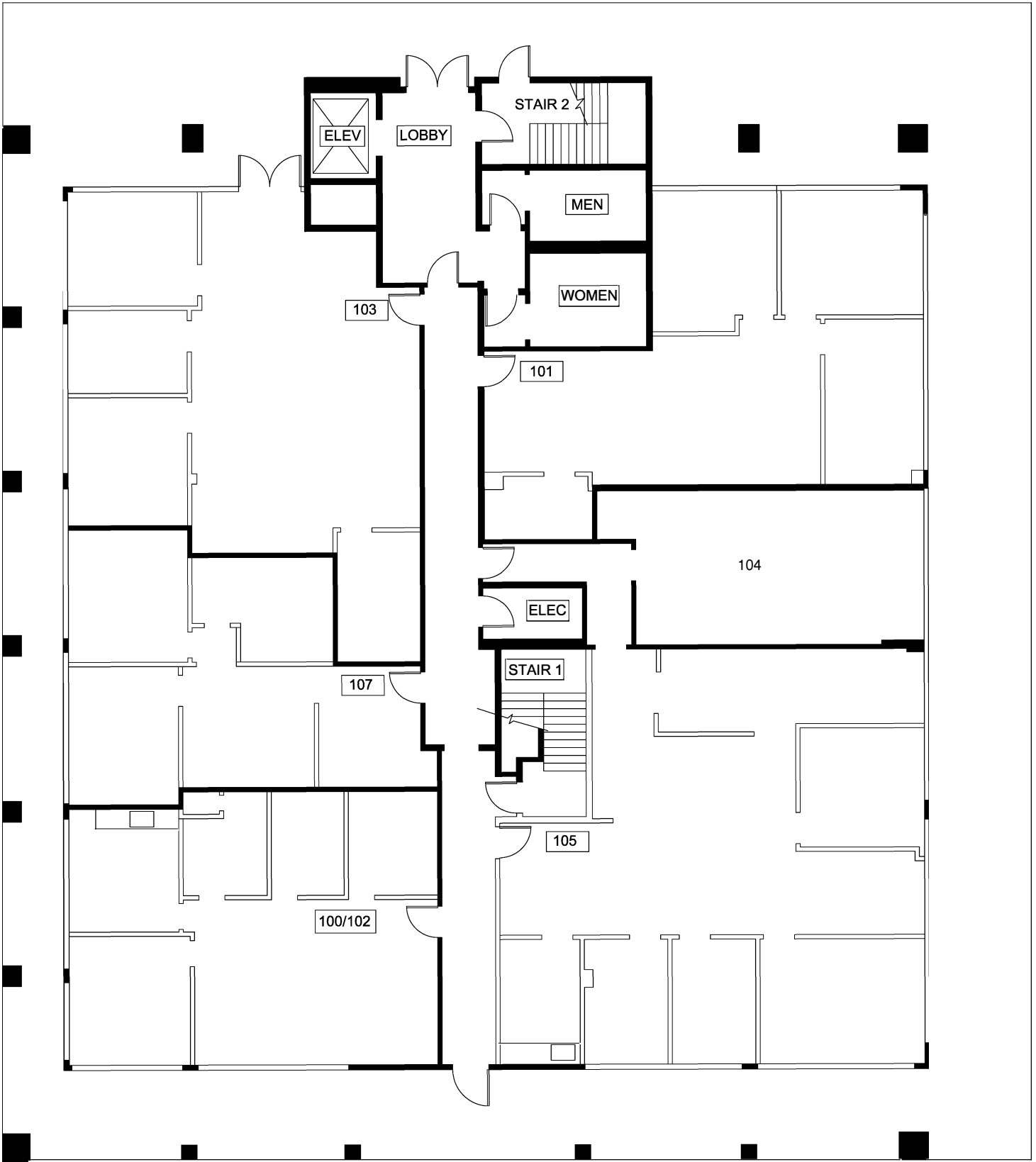
415.307.8056  
david.bell@compass.com  
CalDRE #01862467

**Gary Barboro**  
Senior Vice President

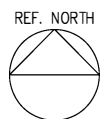
415.867.6512  
gary.barboro@compass.com  
CalDRE #01125826

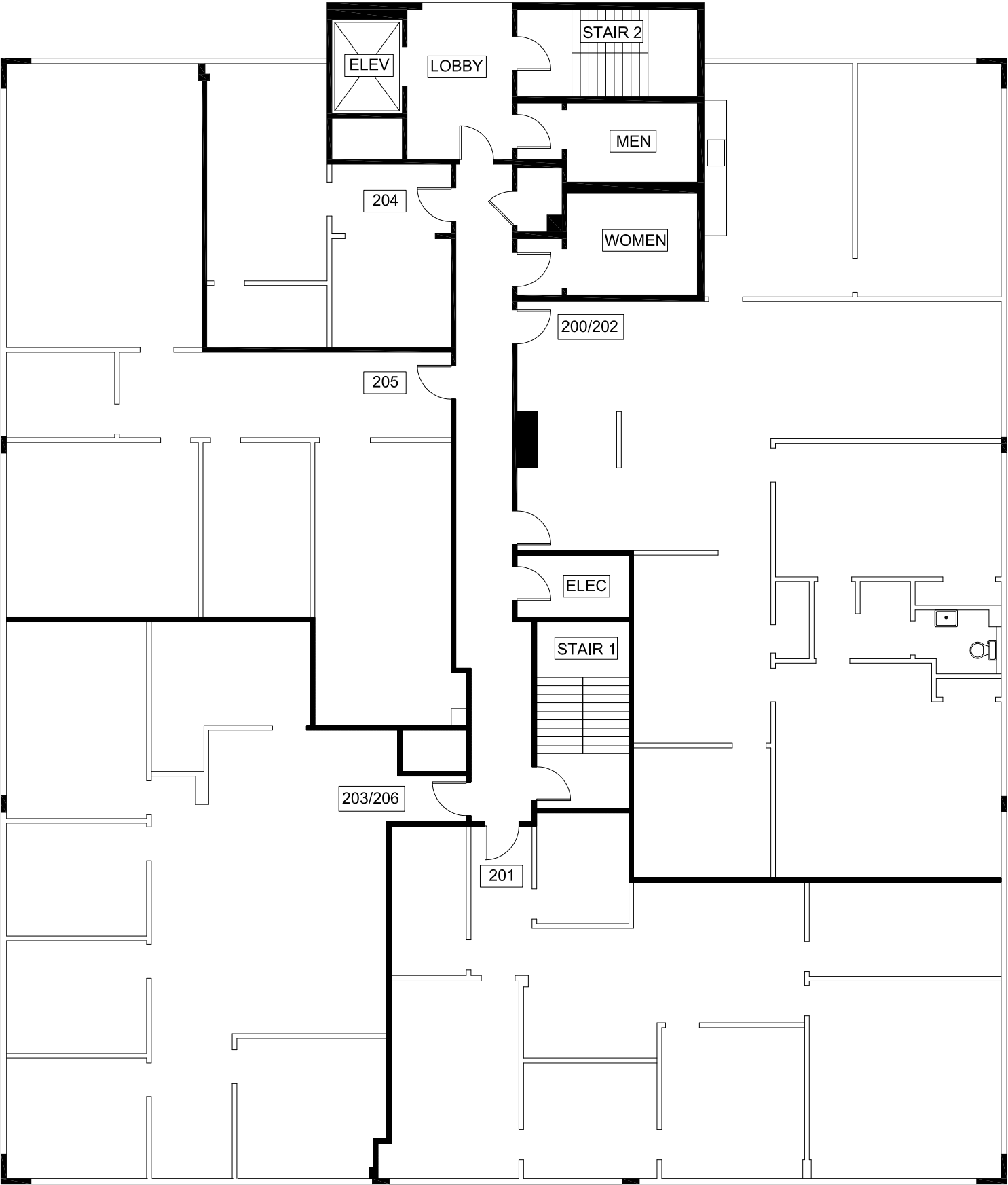
**Jack Silva**  
Senior Vice President

415.308.2966  
jack.silva@compass.com  
CalDRE #00863003



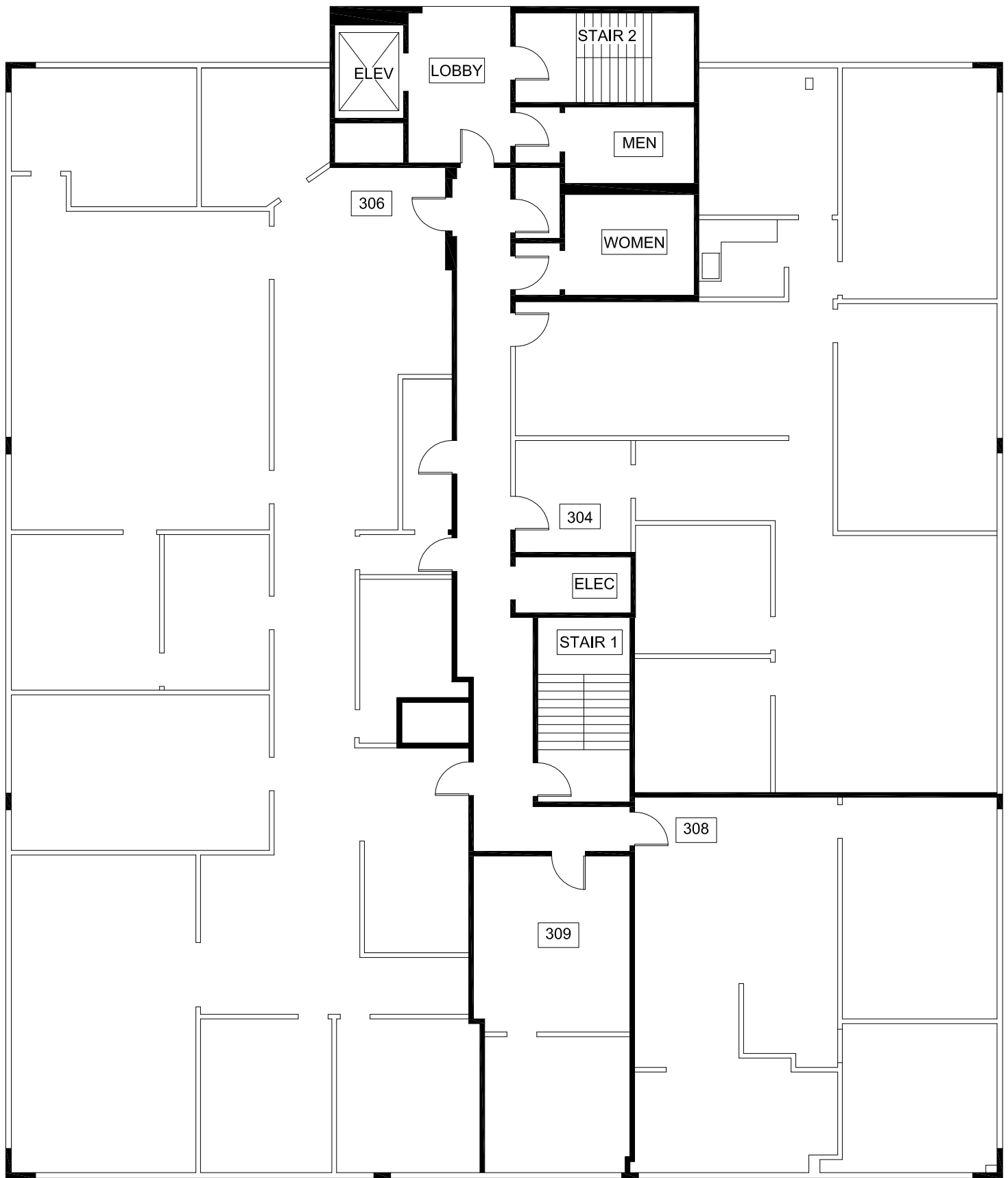
FIRST FLOOR



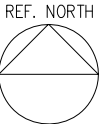


SECOND FLOOR





THIRD FLOOR







**David Bell**  
Junior Vice President

415.307.8056  
david.bell@compass.com  
CalDRE #01862467

**Gary Barboro**  
Senior Vice President

415.867.6512  
gary.barboro@compass.com  
CalDRE #01125826

**Jack Silva**  
Senior Vice President

415.308.2966  
jack.silva@compass.com  
CalDRE #00863003





**David Bell**  
Junior Vice President

415.307.8056  
david.bell@compass.com  
CalDRE #01862467

**Gary Barboro**  
Senior Vice President

415.867.6512  
gary.barboro@compass.com  
CalDRE #01125826

**Jack Silva**  
Senior Vice President

415.308.2966  
jack.silva@compass.com  
CalDRE #00863003

Compass is a real estate broker licensed by the State of California and abides by Equal Housing Opportunity laws. License Number 01991628, 01527235, 1527365. All material presented herein is intended for informational purposes only and is compiled from sources deemed reliable but has not been verified. Changes in price, condition, sale or withdrawal may be made without notice. No statement is made as to the accuracy of any description. All measurements and square footage are approximate.