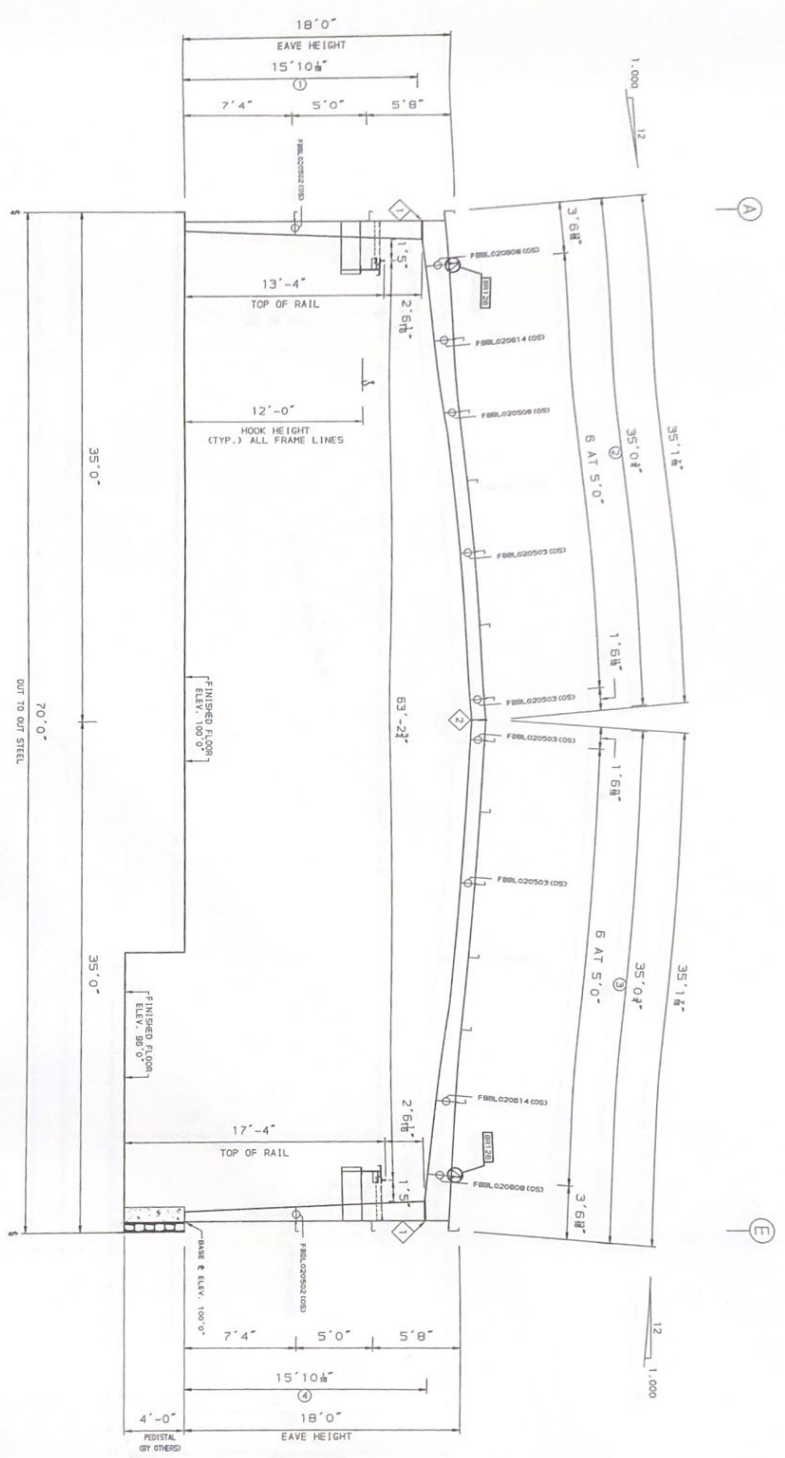


GENERAL NOTES

BOLT INFORMATION

KEY	QTY	SIZE
1	2	3/4" x 2"
2	4	3/4" x 2"
3	4	3/4" x 2"



CROSS SECTION AT FRAME LINES

NO.	DATE	BY	DESCRIPTION
1	08-12-04	CK	STRUCTURAL

1. REFERENCE ELEVATION = 100'-0"
 2. NOTE: ANCHOR BOLTS AT REFERENCE ELEVATION UNLESS NOTED OTHERWISE.
 3. SEE ANCHOR BOLT PLAN FOR ANCHOR BOLT SIZES AND ORIENTATIONS.
 4. OR ONE SIDE (OS) AS NOTED.
 5. ALL MAIN FRAME CONNECTION BOLTS ARE A325 BOLTS.
 6. ALL MAIN FRAME CONNECTION BOLTS ARE A325 BOLTS.
 7. ALL PLATES, BRACE ECTIONS AND OTHER BOLTS ARE TO BE INSTALLED AT THE TIME OF ERECTION OF THE FRAME. IN ADDITION, ALL BOLTS ARE TO BE INSTALLED ON BOTH SIDES OF THE FRAME AND BEFORE ERECTION LOADS ARE APPLIED.
 8. ALL CONNECTION BOLTS ON FIELD BOLTS OF RAILS ARE TO BE INSTALLED ON BOTH SIDES OF THE RAILS.
 9. ALL CONNECTION BOLTS ON ONE SIDE (OS) OF FRAME. SEE DETAIL FOR CONNECTION ON BOTH SIDES (OS) OF FRAME.
 10. SEE DETAIL FOR CONNECTION ON BOTH SIDES (OS) OF FRAME.

1. REFERENCE ELEVATION = 100'-0"
 2. NOTE: ANCHOR BOLTS AT REFERENCE ELEVATION UNLESS NOTED OTHERWISE.
 3. SEE ANCHOR BOLT PLAN FOR ANCHOR BOLT SIZES AND ORIENTATIONS.
 4. OR ONE SIDE (OS) AS NOTED.
 5. ALL MAIN FRAME CONNECTION BOLTS ARE A325 BOLTS.
 6. ALL MAIN FRAME CONNECTION BOLTS ARE A325 BOLTS.
 7. ALL PLATES, BRACE ECTIONS AND OTHER BOLTS ARE TO BE INSTALLED AT THE TIME OF ERECTION OF THE FRAME. IN ADDITION, ALL BOLTS ARE TO BE INSTALLED ON BOTH SIDES OF THE FRAME AND BEFORE ERECTION LOADS ARE APPLIED.
 8. ALL CONNECTION BOLTS ON FIELD BOLTS OF RAILS ARE TO BE INSTALLED ON BOTH SIDES OF THE RAILS.
 9. ALL CONNECTION BOLTS ON ONE SIDE (OS) OF FRAME. SEE DETAIL FOR CONNECTION ON BOTH SIDES (OS) OF FRAME.
 10. SEE DETAIL FOR CONNECTION ON BOTH SIDES (OS) OF FRAME.



IDENTIFICATION SYSTEM FOR THE TRACK SPECIFIED ON THIS DRAWING. ALL DIMENSIONS AND NOTES ARE TO BE USED IN CONSTRUCTION OF THE TRACK. THE NUMBER OF RECORDS FOR THIS CONSTRUCTION PROJECT IS 10.

FOR CONNECTIONS

BOLT INFORMATION

KEY	QTY	SIZE
1	2	3/4" x 2"
2	4	3/4" x 2"
3	4	3/4" x 2"

NO.	DATE	BY	DESCRIPTION
1	08-12-04	CK	STRUCTURAL