



6435 SHILOH ROAD

ALPHARETTA, GA 30005

Newest Flex Spec Suites
Coming to Alpharetta

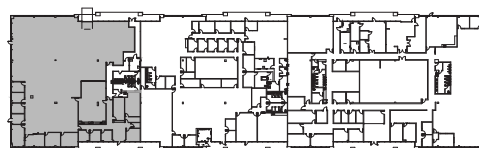
NEWMARK

SUITE A & B: 14,589 SF

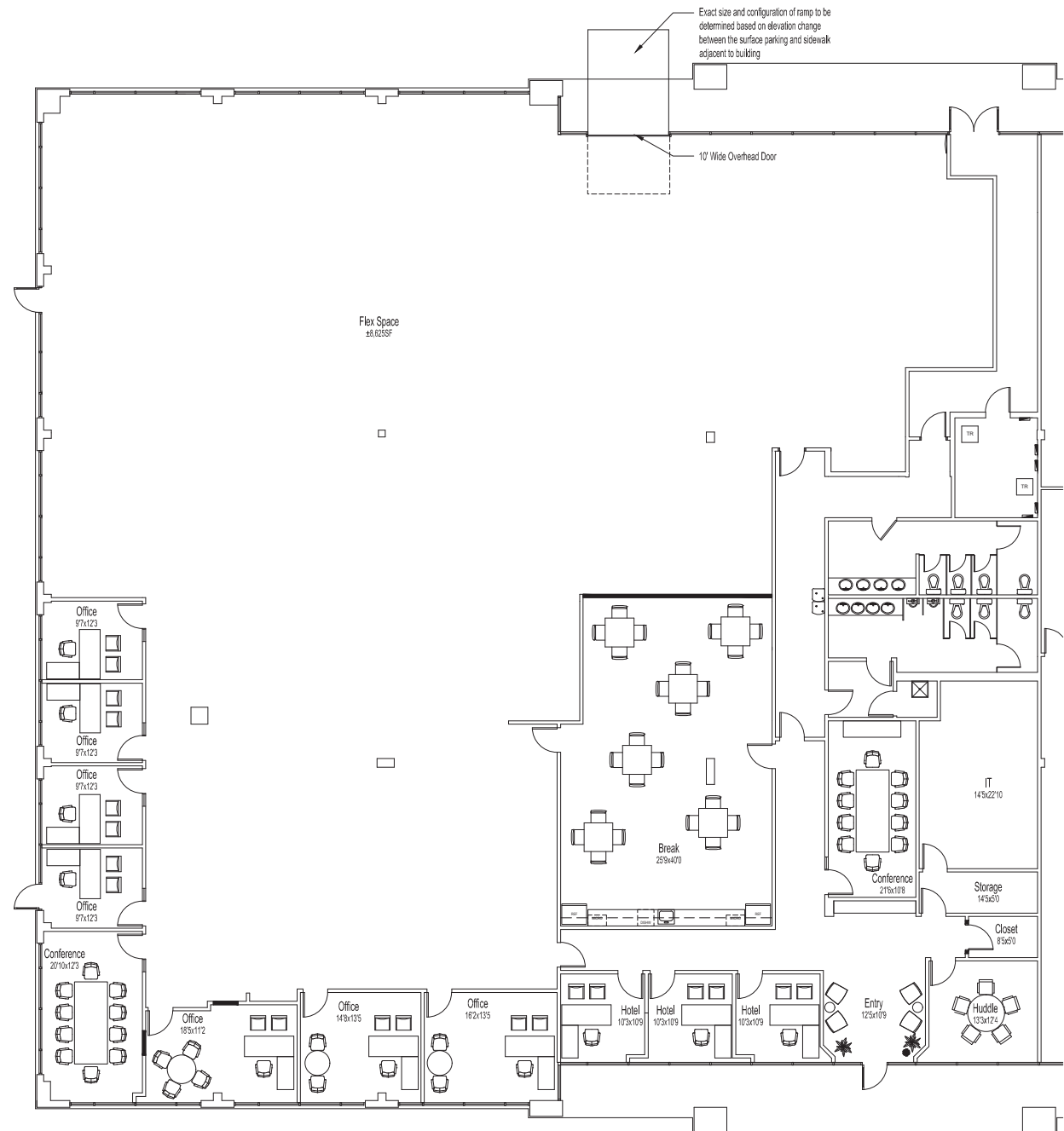
Office RSF: 5,964

Warehouse RSF: 8,625

One overhead door



Key Plan

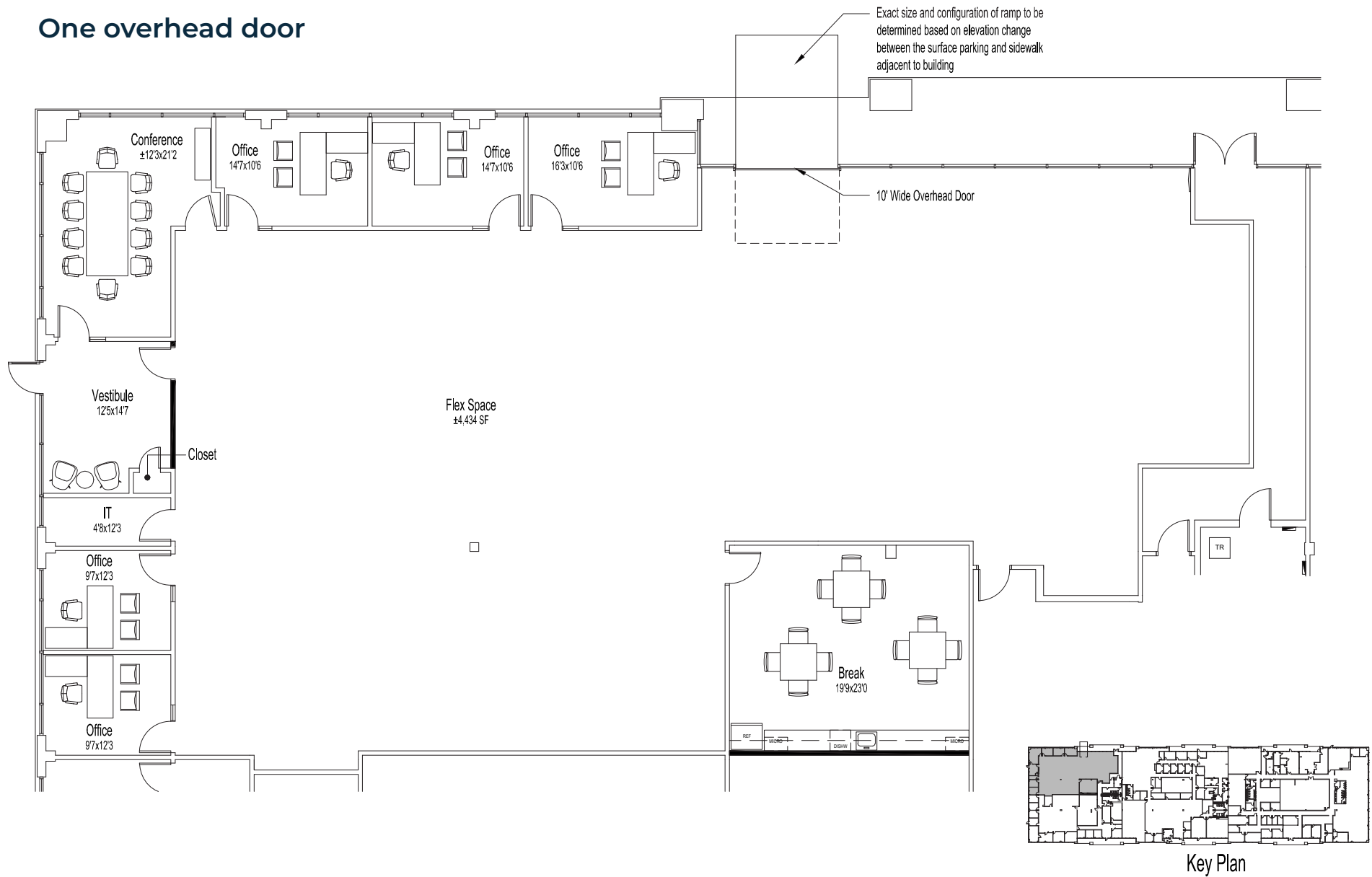


SUITE B: 7,091 SF

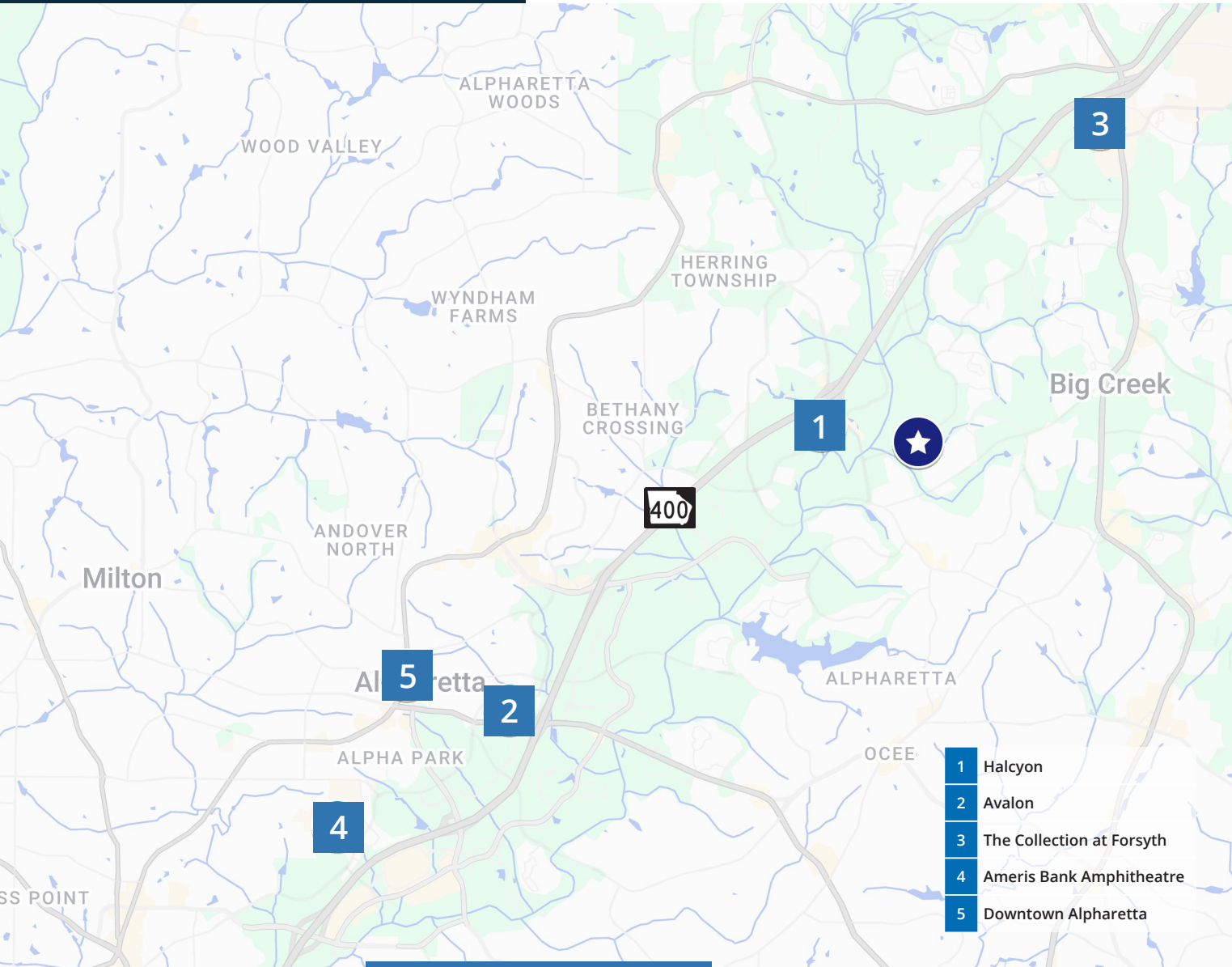
Office RSF: 2,657

Warehouse RSF: 4,434

One overhead door



CONVENIENT ACCESS



DRIVE TIMES

23 MIN	Sandy Springs
29 MIN	Buckhead
35 MIN	Midtown
40 MIN	Downtown Atlanta
50 MIN	Hartsfield-Jackson International Airport

6435 Shiloh Road

Alpharetta, GA 30005



DISCLAIMERS

Newmark has implemented a proprietary database and our tracking methodology has been revised. With this expansion and refinement in our data, there may be adjustments in historical statistics including availability, asking rents, absorption and effective rents. Newmark Research Reports are available at nmrk.com/insights.

All information contained in this publication is derived from sources that are deemed to be reliable. However, Newmark has not verified any such information, and the same constitutes the statements and representations only of the source thereof and not of Newmark. Any recipient of this publication should independently verify such information and all other information that may be material to any decision the recipient may make in response to this publication and should consult with professionals of the recipient's choice with regard to all aspects of that decision, including its legal, financial and tax aspects and implications. Any recipient of this publication may not, without the prior written approval of Newmark, distribute, disseminate, publish, transmit, copy, broadcast, upload, download or in any other way reproduce this publication or any of the information it contains. This document is intended for informational purposes only, and none of the content is intended to advise or otherwise recommend a specific strategy. It is not to be relied upon in any way to predict market movement, investment in securities, transactions, investment strategies or any other matter.

nmrk.com
770-552-2400

PREPARED BY:

Stewart Thrash

Senior Managing Director

t 404-926-1074

stewart.thrash@nmrk.com

Brad Kirschner

Senior Managing Director

t 404-509-5930

brad.kirschner@nmrk.com

NEWMARK