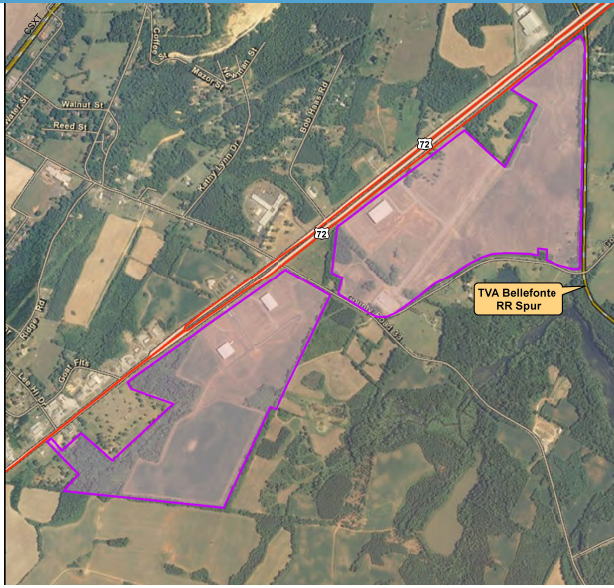


AVAILABLE ADVANTAGESITE SITE

JACKSON COUNTY INDUSTRIAL PARK
29731 US HWY 72, HOLLYWOOD, JACKSON , ALABAMA, 35752



Description

This Industrial Park is centrally located between Huntsville Alabama and Chattanooga Tennessee. There is over 250 available acres ready for industry! All due diligence has been completed, Phase I and Phase II, wetlands, soil borings, ready to go. All utilities are in place for industrial use as well. NAEC has telecommunication fiber that can supply high speed internet at 40 gbps. Sub-station on site.

Comments

Sale / Lease

For Sale: Yes
Sale Price:
Pricing Information: Price negotiable due to job creation

Property Details

Latitude: 34.720500
Longitude: -85.955600
Total Acreage:
Available Acres: 285 Acre(s)
Largest Tract Available: 99 Acre(s)
Smallest Tract Available:
Expandable:
Wetlands:
Phase 1 Audit Done: Yes

Utilities

Electric Provider: North Alabama Electric Co-op
Electric Provider 2:
Natural Gas Provider: Scottsboro Water/Sewer & Gas
Natural Gas Size of Main:
Water Provider: Scottsboro Water/Sewer & Gas
Water Size of Main: 12"
Telecommunications Provider: North Alabama Electric Co-Op
Fiber Available: Yes
DSL Available:
Sewer Provider: Scottsboro Water/Sewer & Gas
Sewer Size of Main: 8"

Interstate/Highway

Interstate: Interstate I-24
To Interstate (miles): 27.00 Mile(s)
Interstate #2: Interstate I-59
To Interstate #2 (miles): 30.00 Mile(s)
Highway:
To Highway (miles): On-Site
State Highway:
To State Highway (miles):

Zoning

Zoning: Industrial

Rail

Carrier:
Rail 1 Track Status:
Rail 2 Track Status:

Port

Nearest Port: Tennessee River
Dock Distance:

Advantage Alabama

6 Interstates converge in Alabama

All Communities within 2 hours of a commercial airport

92 Public-use airports

5 Class 1 railroads and multiple short line railroads

Deep water port on the Gulf of Mexico

One of the longest inland waterway systems

Right-To-Work state

WIN with Alabama

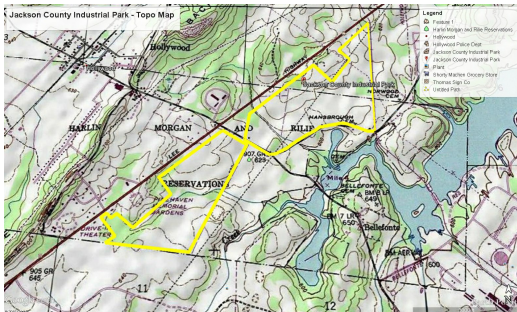
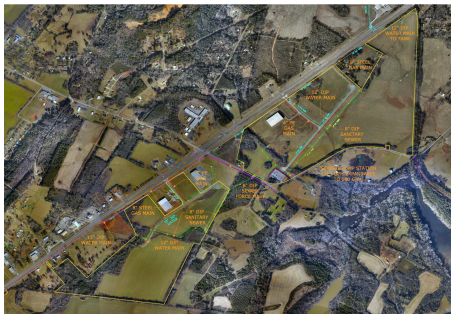
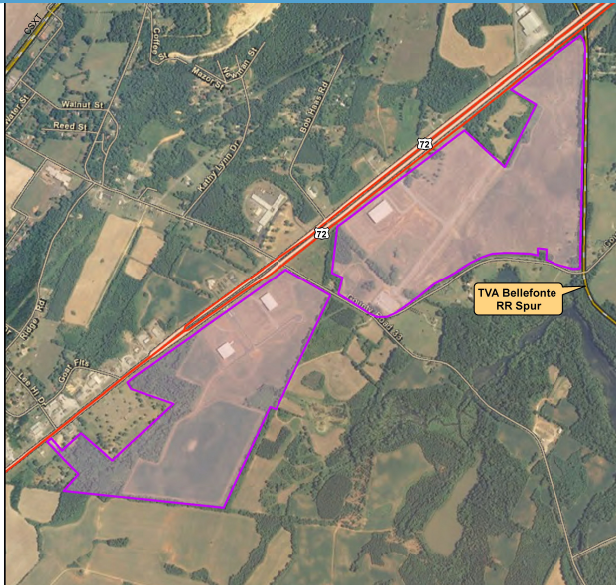
For more information, please contact:

Jackson County Economic Development Authority
Nathan Lee
(256) 574-1331
nathanlee@jacksoncountyedpa.org

Economic Development Partnership of Alabama
1320 1st Avenue South
Birmingham, AL 35233
Greg Blalock
Project Director
P 205.943.4700
gblalock@edpa.org
https://www.edpa.org

AVAILABLE ADVANTAGESITE SITE

JACKSON COUNTY INDUSTRIAL PARK
29731 US HWY 72, HOLLYWOOD, JACKSON, ALABAMA, 35752



Advantage Alabama

6 Interstates converge in Alabama

All Communities within 2 hours of a commercial airport

92 Public-use airports

5 Class 1 railroads and multiple short line railroads

Deep water port on the Gulf of Mexico

One of the longest inland waterway systems

Right-To-Work state

WIN with Alabama

For more information, please contact:

Jackson County Economic Development Authority
Nathan Lee
(256) 574-1331
nathanlee@jacksoncountyeda.org

Economic Development Partnership of Alabama
1320 1st Avenue South
Birmingham, AL 35233
Greg Blalock
Project Director
P 205.943.4700
gblalock@edpa.org
<https://www.edpa.org>