



For Lease | 2,500 – 6,500 SF | Retail/Restaurant/Office
3601 North Central Avenue, Phoenix, AZ

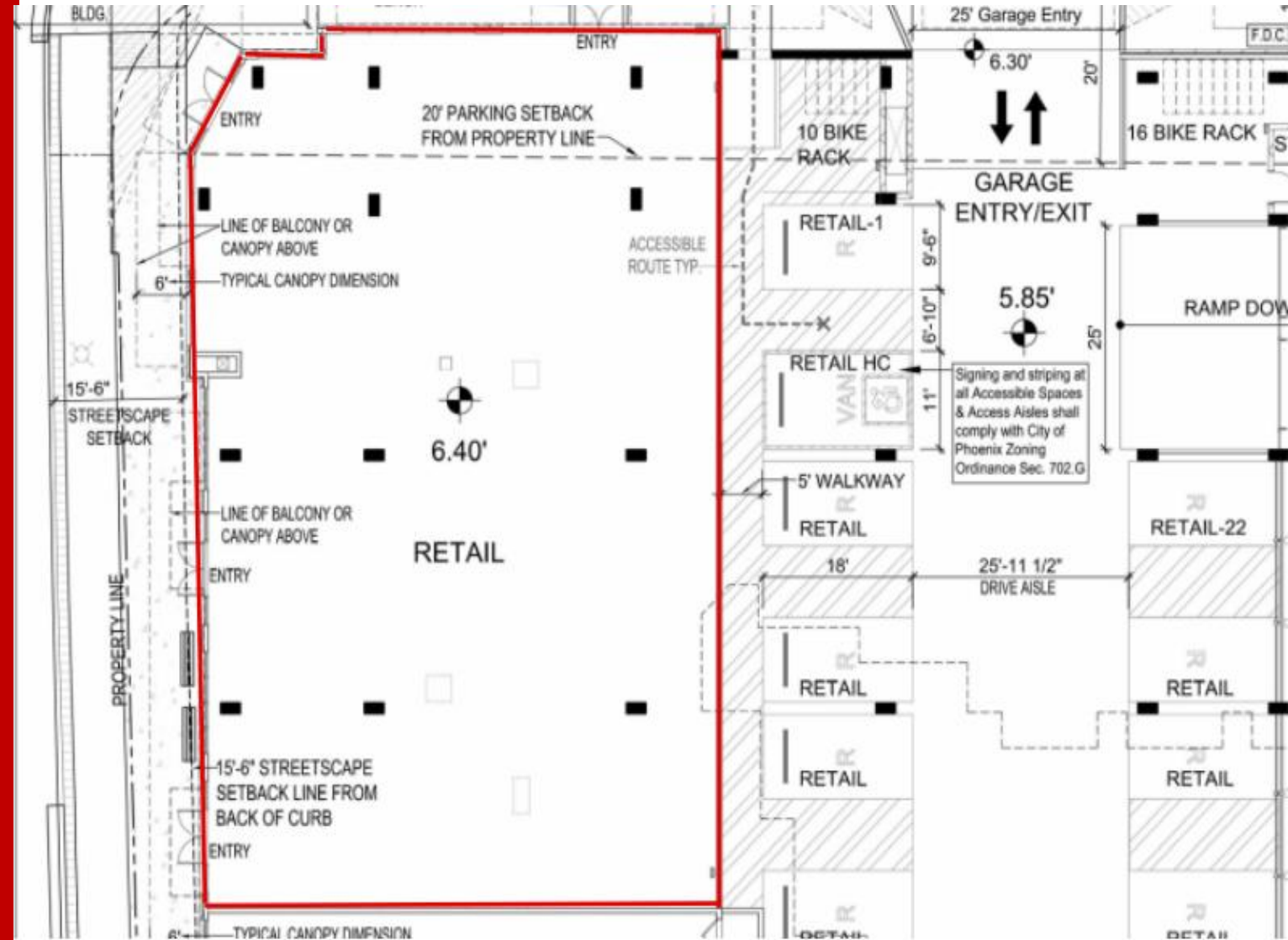


Exclusively Listed By: Brian Kocour | 602-757-1319 | Brian@kocourcompany.com | www.KocourCompany.com

3601 North Central Avenue, Phoenix, AZ

Property Features

- 2,500 – 6,500 SF
- Posh 223-Unit Apartment Community
- Retail, Restaurant and Office Opportunities
- Located in the Heart of Midtown Phoenix
- Ample Garage Parking
- Light Rail Stop at Central and McDowell Road
- Walking distance to Osborn Light Rail Station



This information contained within this brochure has been obtained from sources other than Kocour Company has not verified such information and makes no guarantee warranty or representation about such information.



Exclusively Listed By: **Brian Kocour** | 602-757-1319 | Brian@kocourcompany.com | www.KocourCompany.com