

45150 POLARIS COURT
PLYMOUTH, MICHIGAN

HI-TECH FOR SALE OR LEASE
11,600 Square Feet Available



**SIGNATURE
ASSOCIATES**
KNOW SIGNATURE | KNOW RESULTS

METRO WEST INDUSTRIAL PARK



PROPERTY FEATURES

- High image standalone building
- 11,600 square feet available
- 8,000 square feet office with 10' ceiling
- 3,600 square foot warehouse with 16' clear height
- (2) 10' x 12' grade level doors
- New roof in 2022 & new HVAC in 2023
- Located on 1.25 acres
- Zoned Light Industrial
- Lease Rate: \$13.95/sq. ft. Modified Gross
- Sale Price: Contact Broker



For more information, please contact:

DAVE GREEN
(248) 948 4184
dgreen@signatureassociates.com

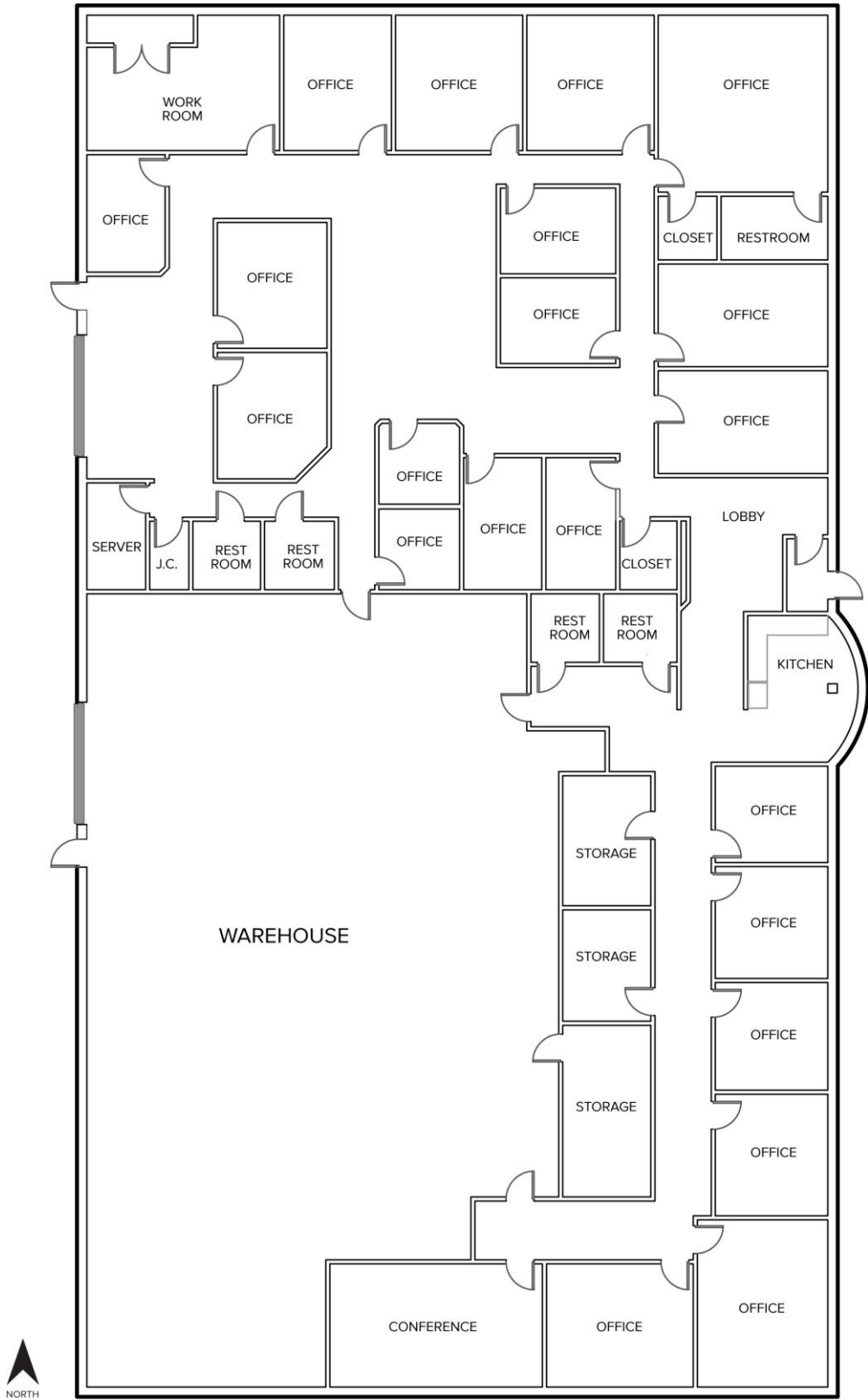
SIGNATURE ASSOCIATES
One Towne Square, Suite 1200
Southfield, MI 48076
www.signatureassociates.com

45150 Polaris Court – Plymouth, Michigan

Hi-Tech For Sale or Lease

11,600
Square Feet
AVAILABLE

Floor Plan



For more information, please contact:

DAVE GREEN
(248) 948 4184
dgreen@signatureassociates.com

SIGNATURE ASSOCIATES
One Towne Square, Suite 1200
Southfield, MI 48076
www.signatureassociates.com

Information is subject to verification and no liability for errors or omissions is assumed. Price is subject to change and listing withdrawal.

45150 Polaris Court – Plymouth, Michigan

Hi-Tech For Sale or Lease

11,600
Square Feet
AVAILABLE

Aerial



For more information, please contact:

DAVE GREEN
(248) 948 4184
dgreen@signatureassociates.com

SIGNATURE ASSOCIATES
One Towne Square, Suite 1200
Southfield, MI 48076
www.signatureassociates.com