

FOR SALE

±65.3-Acre Residential
Development
Opportunity Near
Downtown Columbia

Bedford Road | Tall Timber Lane | Torwood Drive

Sale Price: \$1,306,000

CONTACT

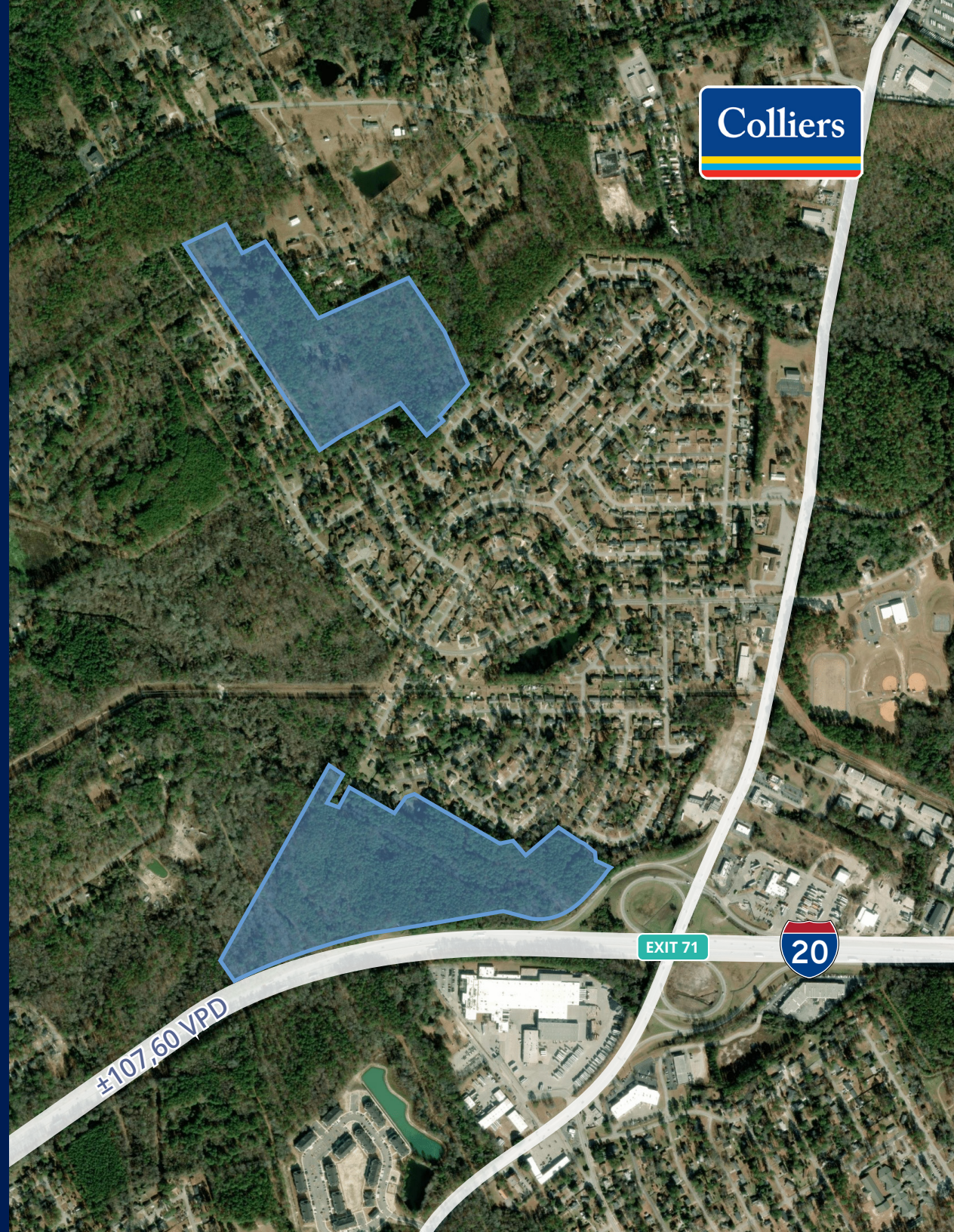
Tyler Teal

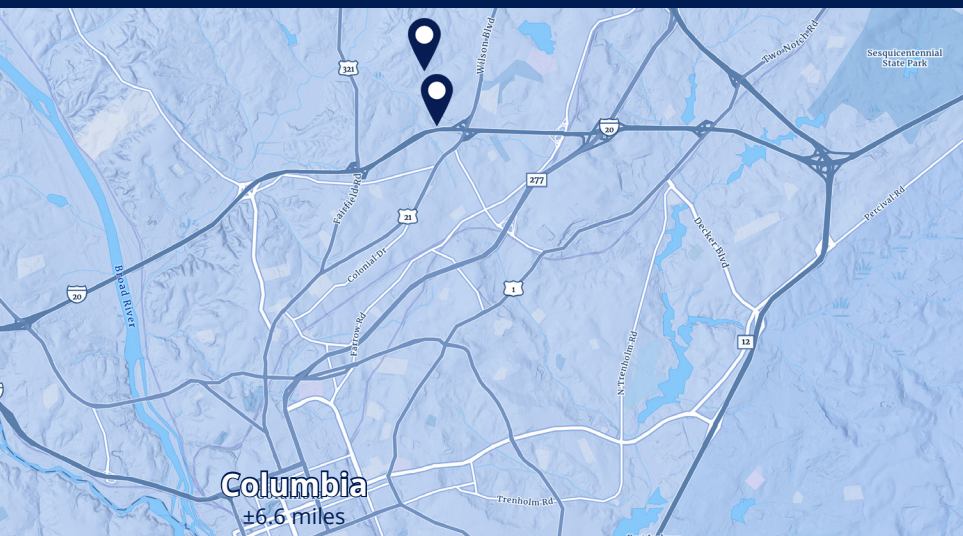
Brokerage Associate
+1 803 401 4267
tyler.teal@colliers.com

Ryan McCue, ALC

Senior Brokerage Associate
+1 803 401 4273
ryan.mccue@colliers.com

Colliers





Property Details

This portfolio includes three tracts totaling approximately 65.3 acres across Bedford Road, Tall Timber Lane, and Torwood Drive. With proximity to I-20, a major thoroughfare, the site boasts excellent residential development opportunities to support the growing population and workforce of the Columbia MSA.

The combined offering provides a mix of R-4, R-3 and HM zoning with a clear path for unified planning, making it an ideal residential project.

Features

- ±65.3 acres across three parcels
- Established neighborhood with proximity to utilities and road infrastructure
- Located just north of Columbia off Interstate 20

Address	Bedford Road, Columbia, SC 29203	
	40 Tall Timber Lane, Columbia, SC 29203	
	Torwood Drive, Columbia, SC 29203	
TMS	#R11815-05-59; #R11909-05-01; #R11913-01-08	
County	Richland	
Acreage	Bedford Parcel:	±41.8 acres
	Tall Timber & Torwood Parcel:	±23.5 acres
	Total:	±65.3 acres
Zoning	R-4; R-3; HM	
Water/Sewer	City of Columbia	

Copyright © 2026 Colliers International. Information herein has been obtained from sources deemed reliable, however its accuracy cannot be guaranteed. The user is required to conduct their own due diligence and verification.