



In the heart of Soho!

- **Available Immediately**
- Best location in the Tampa Bay area - day and night - for an electric mix of residential, hotels, restaurants, and night life
- Distinctive architecture
- Building & monument signage available
- Elevator
- Separate and distinct entries



Suites from 505 -
2,245 rsf available



Rental Rate:
\$45.00/sf NNN



Parking on-site

**Get more
information**

Anne-Marie Ayers
Principal
+1 813 244 9939

avisonyoung.com

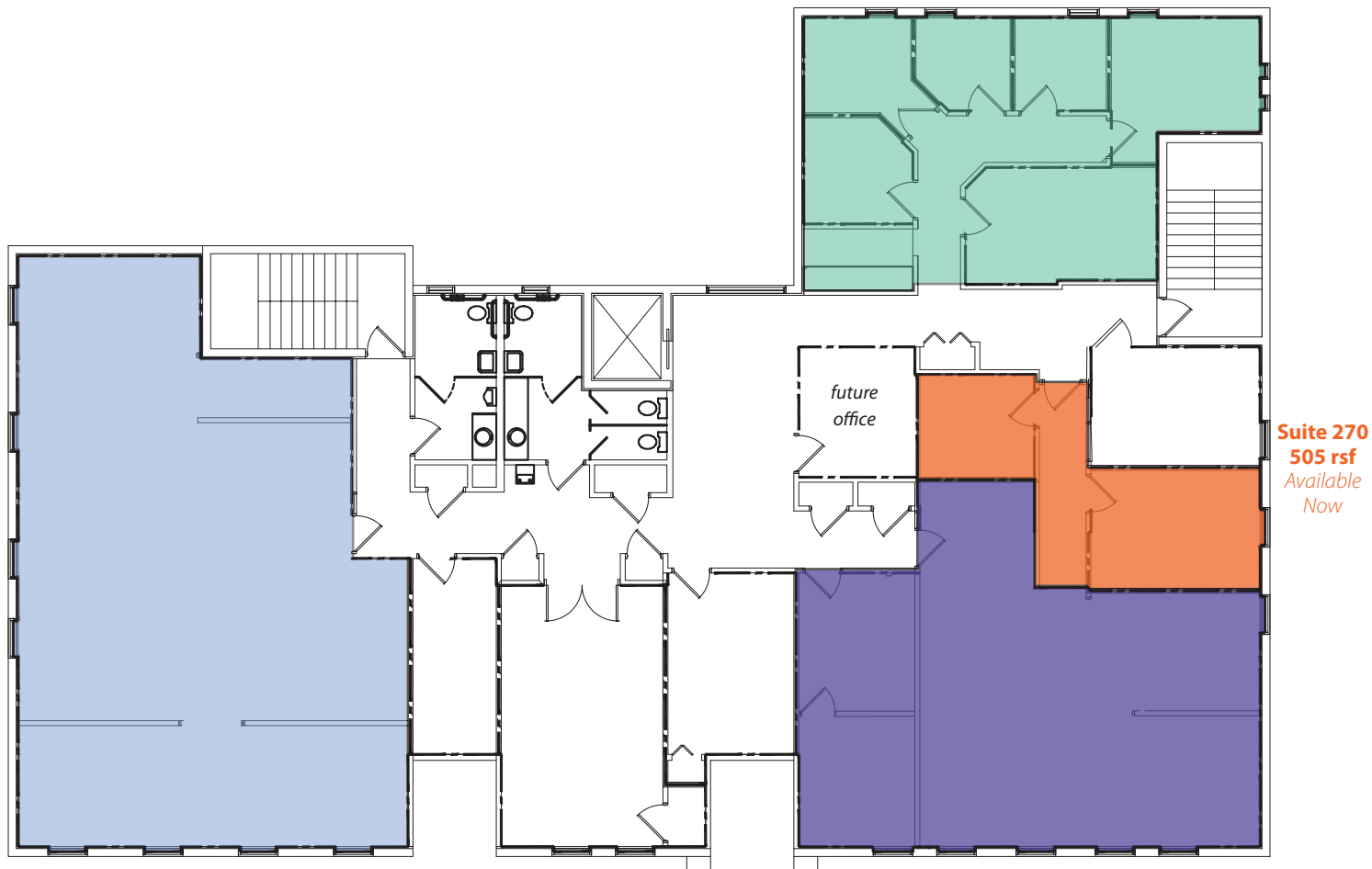
Second floor up to 5,497 rsf

2201 W. Swann Avenue
Tampa, FL 33606

Suite 290
1,199 rsf

Office

Available Immediately



Suite 200
2,245 rsf

*Ideal pilates/yoga
studio*

Available Immediately

Suite 260
1,548 rsf

*Ideal personal training studio
expandable to 2,053 sf*

Available 2/1/2026

Suite 270
505 rsf
*Available
Now*

**Get more
information**

Anne-Marie Ayers
Principal
+1 813 244 9939




**AVISON
YOUNG**

Amenities Map Demographics

2201 W. Swann Avenue
Tampa, FL 33606



Demographics

	1 MILES	3 MILES	5 MILES
 Population	21,307	125,385	234,343
 Households	11,147	58,976	107,552
 Household Income	\$219,067	\$175,634	\$146,531

Get more
information

Anne-Marie Ayers
Principal
+1 813 244 9939

**AVISON
YOUNG**