

5870 Trinity Parkway, Suite 250  
Centreville, VA 20120

Office Sublease  
Available



**±4,000 to 18,000 SF AVAILABLE**

**For More Information**

**Avery Rand**  
Senior Vice President  
603.520.7491  
arand@cresa.com

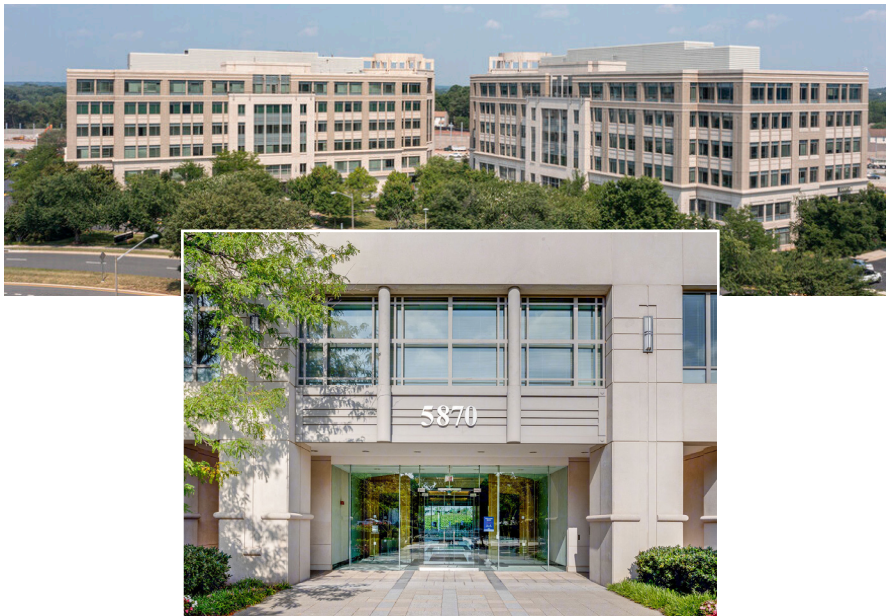
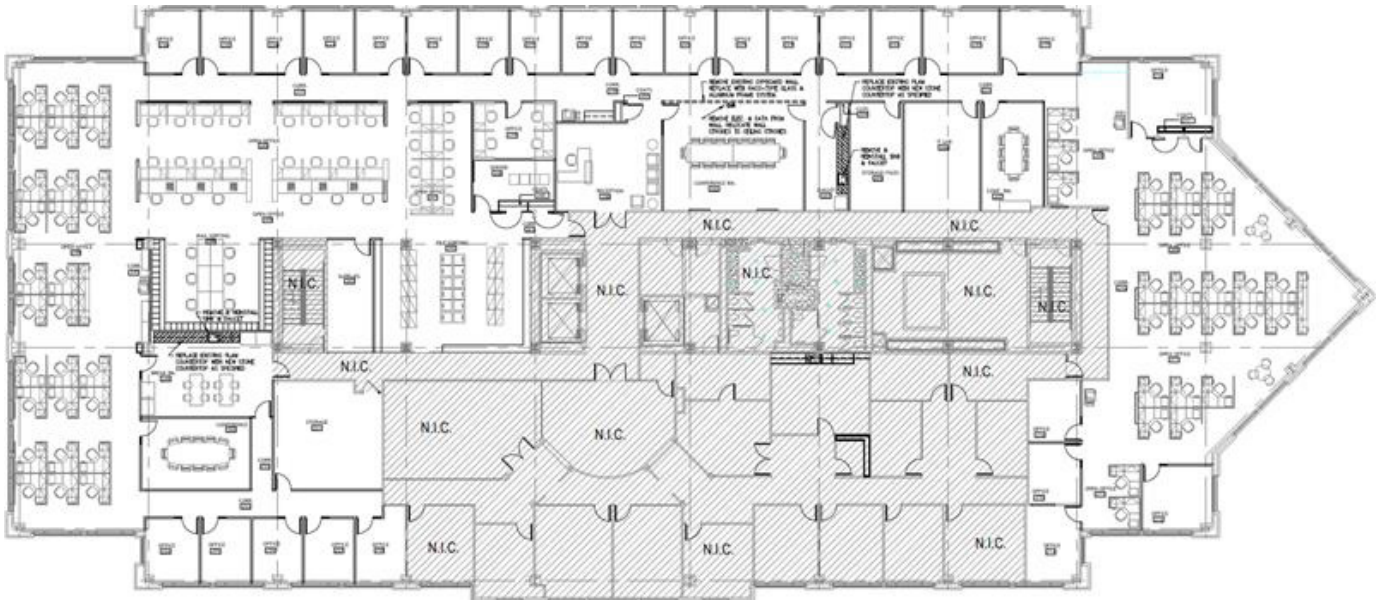
**Cresa Washington, D.C.**  
1800 M Street  
Suite 300 N  
Washington, D.C. 20036

Even though obtained from sources deemed reliable, no warranty or representation, express or implied, is made as to the accuracy of the information herein, and it is subject to errors, omissions, change of price, rental or other conditions, withdrawal without notice, and to any special listing conditions imposed by our principals.



5870 Trinity Parkway, Suite 250  
Centreville, VA 20120

Office Sublease  
Available



#### PROPERTY INFORMATION

Trinity Centre I  
5870 Trinity Parkway, Suite 250  
Centreville, VA 20120

- ±4,000 to 18,000 SF Available
- Rate: negotiable
- Availability: negotiable
- Term: August 2025
- Communal Outdoor Space
- Parking Ratio: 3.69/1,000 SF
- FREE PARKING
- Furnished
- Break-out Space
- Conference Center
- Security: Key Card Entry
- Phone Booths

#### For More Information

**Avery Rand**  
Senior Vice President  
603.520.7491  
arand@cresa.com

**Cresa Washington, D.C.**  
1800 M Street  
Suite 300 N  
Washington, D.C. 20036

Even though obtained from sources deemed reliable, no warranty or representation, express or implied, is made as to the accuracy of the information herein, and it is subject to errors, omissions, change of price, rental or other conditions, withdrawal without notice, and to any special listing conditions imposed by our principals.



5870 Trinity Parkway, Suite 250  
Centreville, VA 20120

Office Sublease  
Available



### For More Information

**Avery Rand**  
Senior Vice President  
603.520.7491  
arand@cresa.com

**Cresa Washington, D.C.**  
1800 M Street  
Suite 300 N  
Washington, D.C. 20036

Even though obtained from sources deemed reliable, no warranty or representation, express or implied, is made as to the accuracy of the information herein, and it is subject to errors, omissions, change of price, rental or other conditions, withdrawal without notice, and to any special listing conditions imposed by our principals.



5870 Trinity Parkway, Suite 250  
Centreville, VA 20120

Office Sublease  
Available



### For More Information

**Avery Rand**  
Senior Vice President  
603.520.7491  
arand@cresa.com

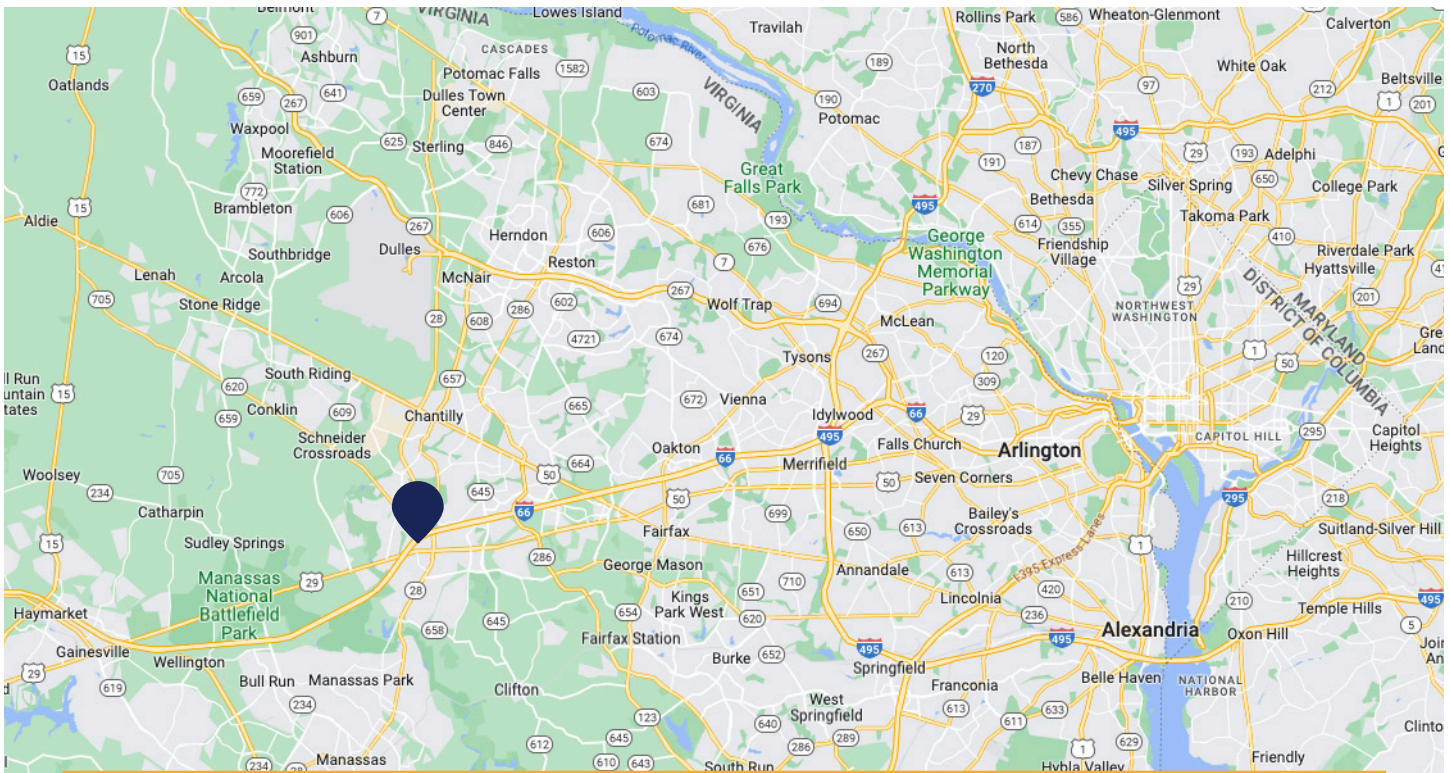
**Cresa Washington, D.C.**  
1800 M Street  
Suite 300 N  
Washington, D.C. 20036

Even though obtained from sources deemed reliable, no warranty or representation, express or implied, is made as to the accuracy of the information herein, and it is subject to errors, omissions, change of price, rental or other conditions, withdrawal without notice, and to any special listing conditions imposed by our principals.



5870 Trinity Parkway, Suite 250  
Centreville, VA 20120

Office Sublease  
Available



**DIRECT ACCESS TO I-66 - 22 MILES TO  
DOWNTOWN WASHINGTON D.C.**

**ONLY 8 MILES SOUTH OF  
DULLES INTERNATIONAL AIRPORT**

**ON-SITE & WALKABLE  
AMENITIES INCLUDE:**

- The Café at Trinity Centre
- Carrabba's
- Chasin' Tails
- The Meat Project
- 24-Hour Fitness
- Spring Hill Suites

**CLOSE BY AMENITIES  
INCLUDE:**

- Ciro's Pizza
- Starbuck's & Subway
- Trader Joe's & Giant Food
- Hallmark Store
- CVS Pharmacy
- U.S. Post Office

**For More Information**

**Avery Rand**  
Senior Vice President  
603.520.7491  
arand@cresa.com

**Cresa Washington, D.C.**  
1800 M Street  
Suite 300 N  
Washington, D.C. 20036

Even though obtained from sources deemed reliable, no warranty or representation, express or implied, is made as to the accuracy of the information herein, and it is subject to errors, omissions, change of price, rental or other conditions, withdrawal without notice, and to any special listing conditions imposed by our principals.

