

FOR LEASE: NEW CONSTRUCTION RETAIL/OFFICE SPACE

2,400 SF

8327 Ridge Ave | Roxborough | Philadelphia, PA

EQUITY CRE



PROPERTY HIGHLIGHTS

- 2,400 SF available
- Ground floor retail beneath 36 units located at The Mezzo Apartments
- Located on the edge of the busy & expanding Ridge Ave Corridor
- Zoned CMX-2
- Easy access to I-76, City Ave & the Ridge Ave corridor
- Great mix of residential density & commercial traffic
- Sits between Manayunk & Andorra neighborhoods



CONTACT

CONOR TUNNO

ctunno@equitycre.com

DIRECT 484.531.2004

WILL CICCARELLI

wcicarelli@equitycre.com

DIRECT 484.531.2209

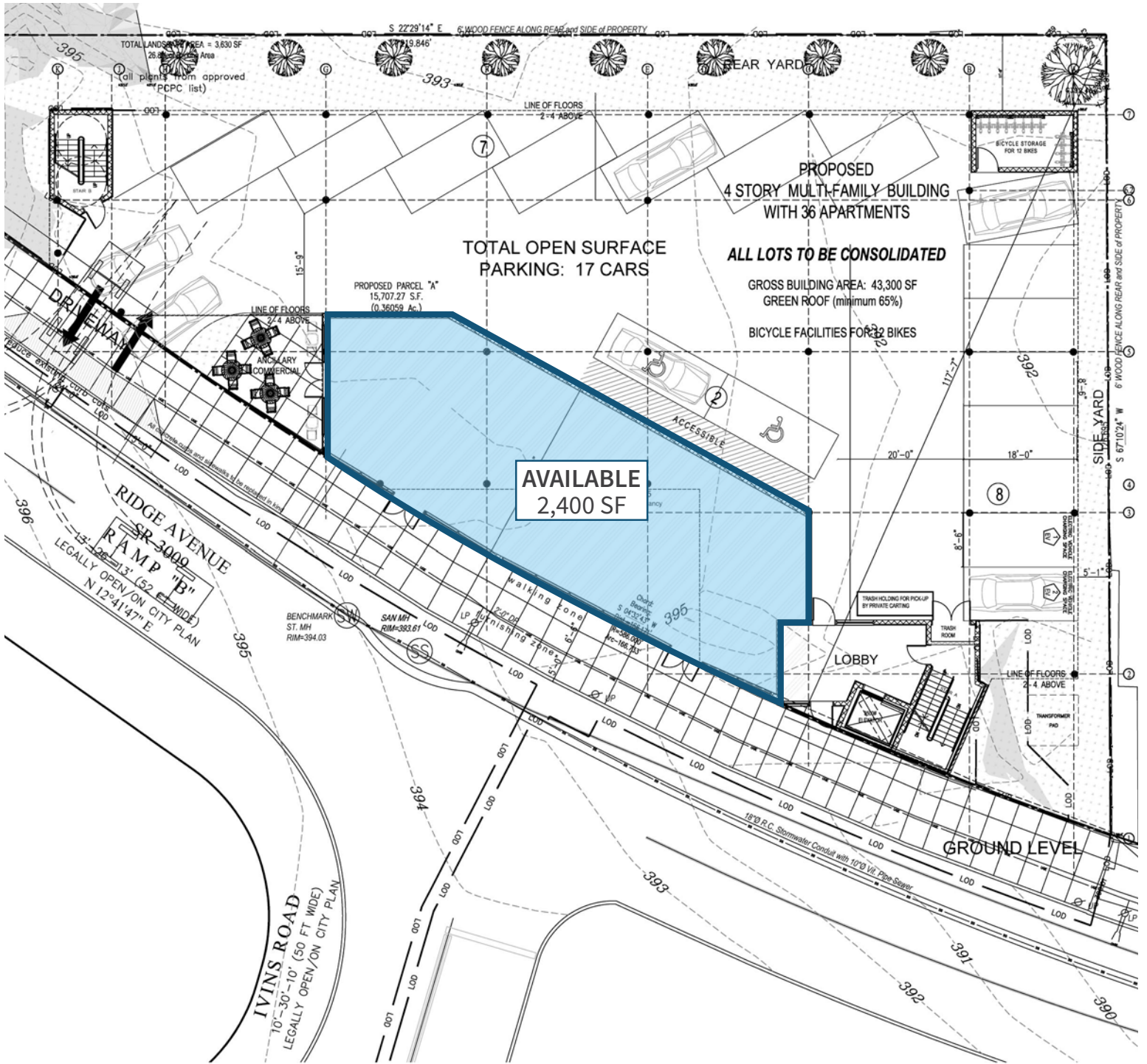


FOR LEASE: NEW CONSTRUCTION RETAIL/OFFICE SPACE

2,400 SF

8327 Ridge Ave | Roxborough | Philadelphia, PA

FLOOR PLANS



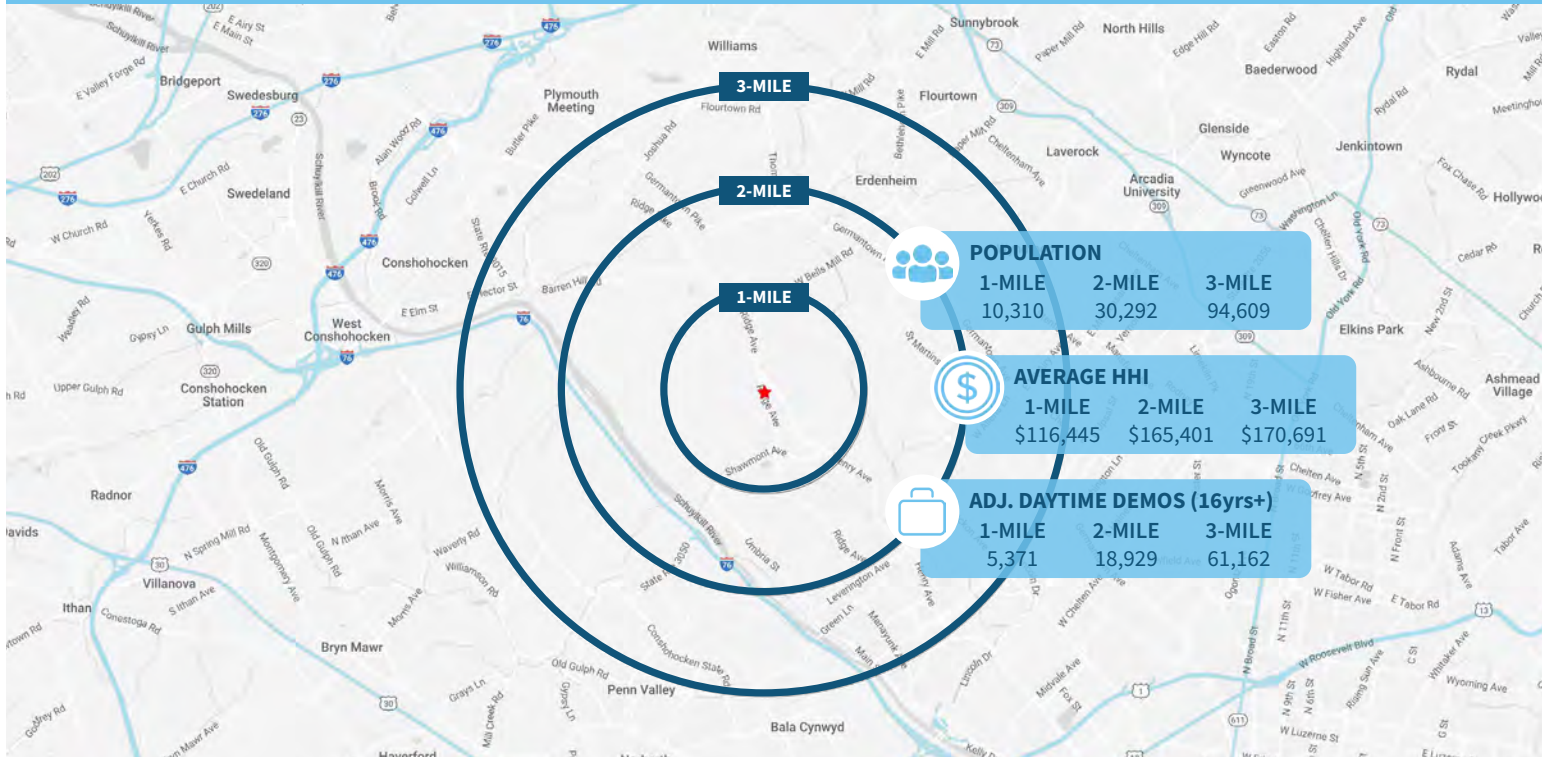
FOR LEASE: NEW CONSTRUCTION RETAIL/OFFICE SPACE

2,400 SF

8327 Ridge Ave | Roxborough | Philadelphia, PA



Demographic Overview (1, 2, 3-mile radius)

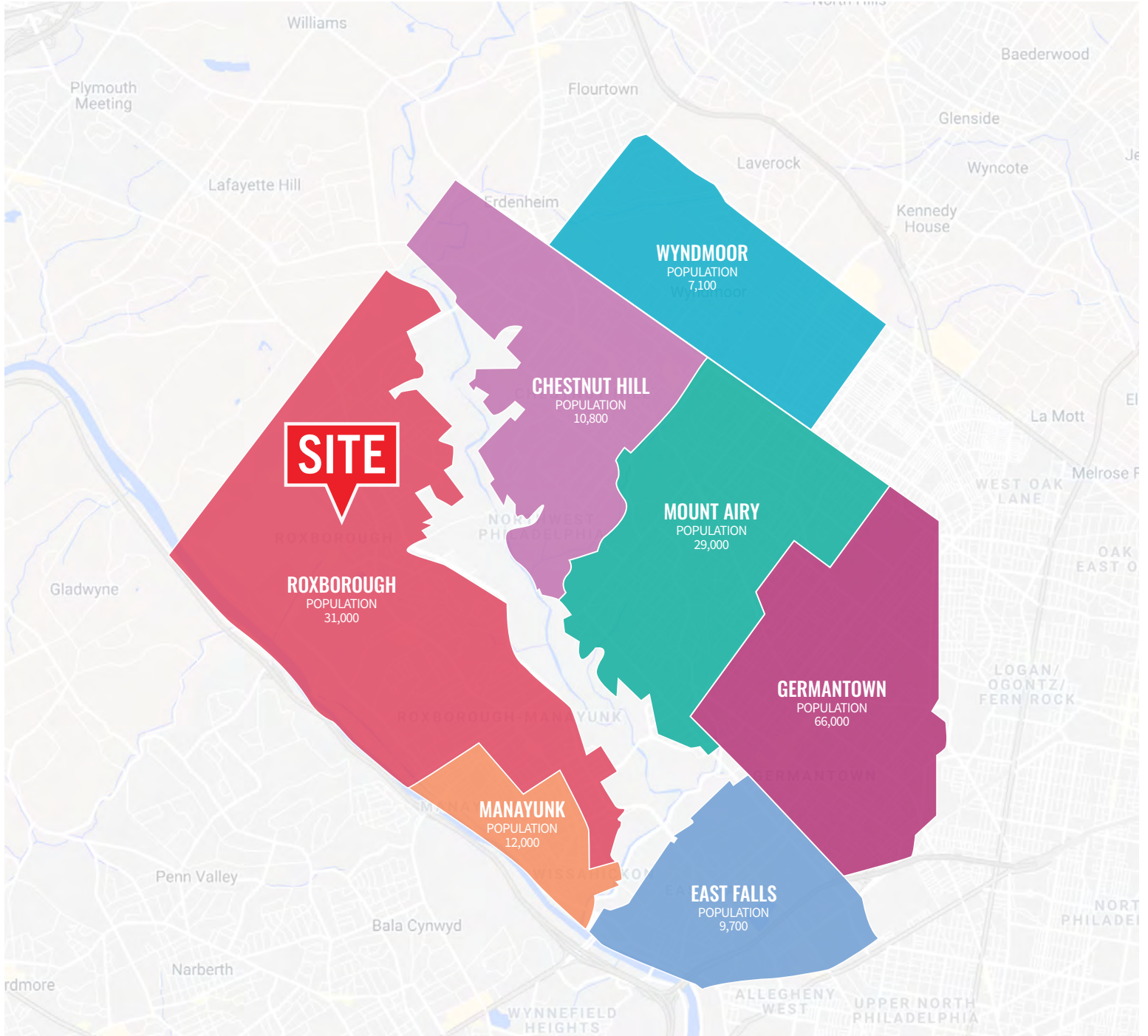


FOR LEASE: NEW CONSTRUCTION RETAIL/OFFICE SPACE 2,400 SF

8327 Ridge Ave | Roxborough | Philadelphia, PA

EQUITY CRE

NEIGHBORHOOD MAP



The right space. The right move.



CMRE CAPITAL MARKETS REAL ESTATE NETWORK

Information concerning this offering is from sources deemed reliable but no warranty is made to the accuracy thereof and it is submitted subject to errors, omissions, changes of price or other conditions, prior to sale or lease or withdrawal without notice. Equity CRE is licensed in PA, NJ, & DE. Conor Tunno & Will Ciccarelli are licensed salespersons in PA.



Andorra Shopping Center

KOHL'S **TJ-maxx** CHASE

DOLLAR TREE **McDonald's** LA|FITNESS

petco **CHIPOTLE** **AspenDental** **EUROPEAN WAX CENTER**

HAIR CUTTERY **five BELOW**

SITE

CVS
pharmacy

U-HAUL

