



**FOR LEASE**

# 1805 Little Orchard Street, Suite 100

1805 LITTLE ORCHARD STREET, SUITE 100  
SAN JOSE, CA 95125

## SUITE SIZE (SF)

2,466 SF

## LEASE RATE

\$1.65 per foot + \$0.32 CAM

## PROPERTY SUBTYPE

Flex Space

## PROPERTY DETAILS

- 10'X10' Grade Level Loading
- 100 Amps of 208 Volt 3 Phase Power
- Sprinklered Building
- 2.3/1,000 Parking Ratio
- Walking Distance to Amenities at the Plant Shopping Center
- and Santa Clara County Fairgrounds
- Easy Access to HWY 87

*For more information, please contact:*

### Martin Chiechi

Executive Managing Director

CA RE #00806069

t 408-987-4178

Martin.Chiechi@nmrk.com

3055 Olin Ave Suite 2200

San Jose, CA 95128

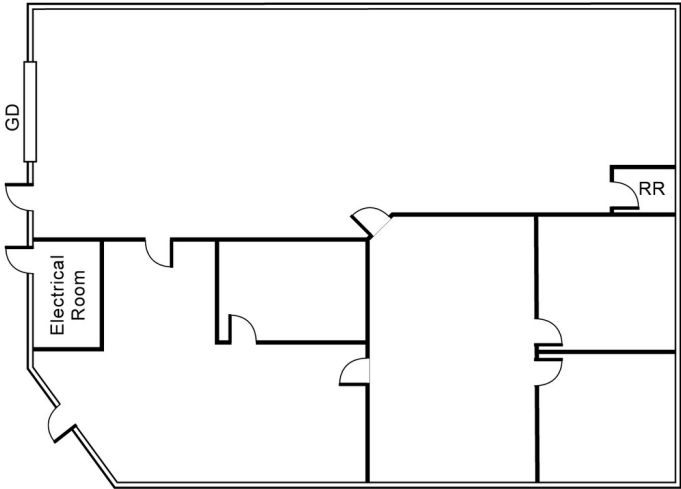
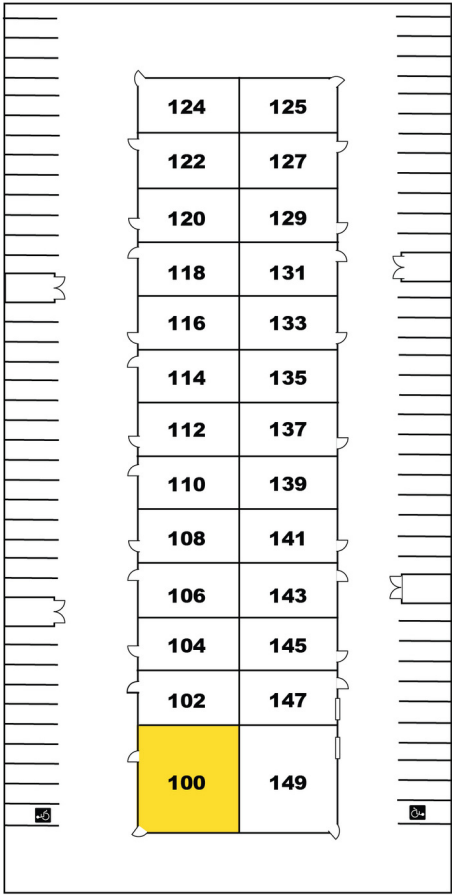


nmrk.com

**NEWMARK**

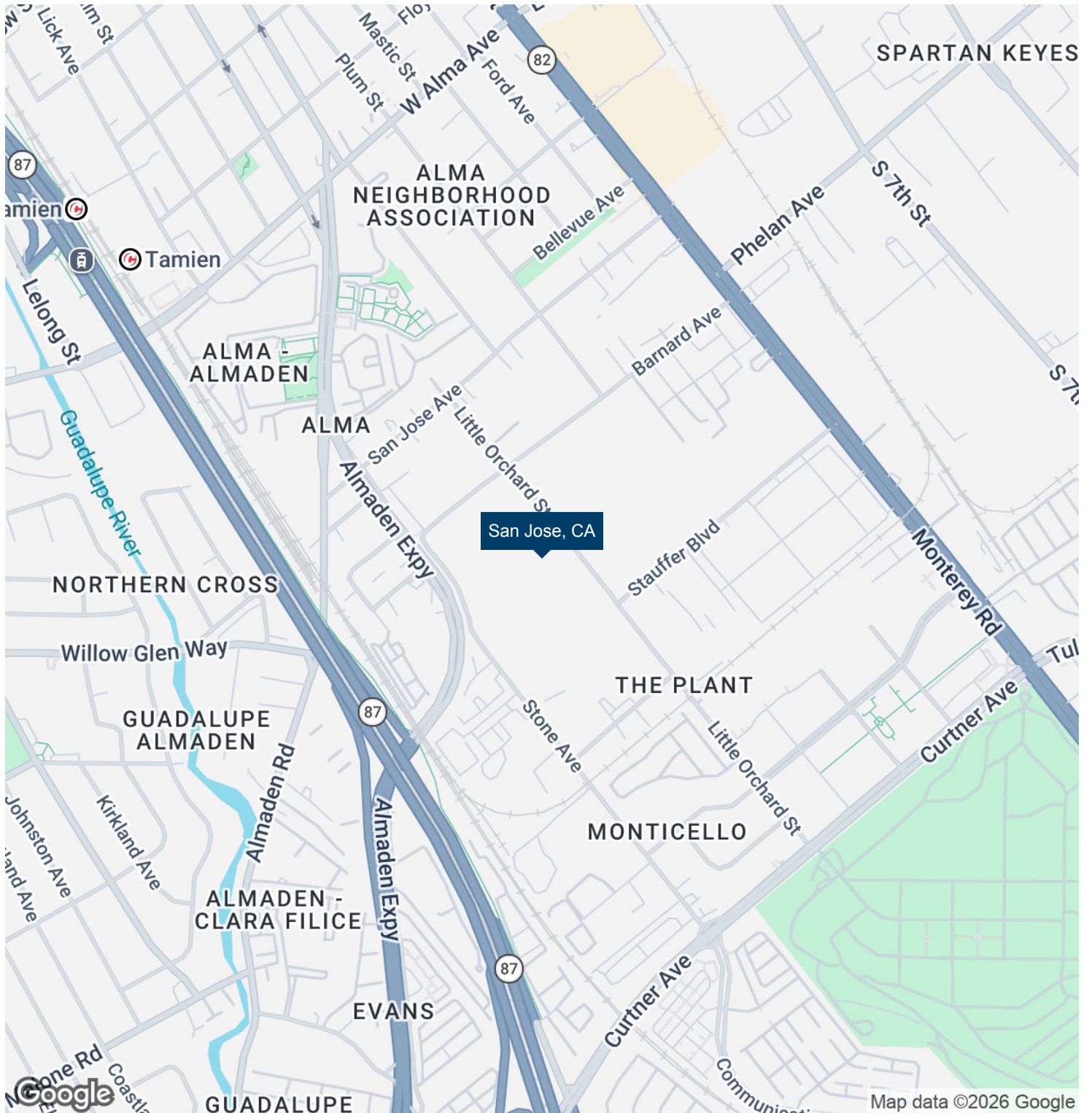
Corporate License #0832933

The information contained herein has been obtained from sources deemed reliable but has not been verified and no guarantee, warranty or representation, either express or implied, is made with respect to such information. Terms of sale or lease and availability are subject to change or withdrawal without notice.



**Martin Chiechi**  
Executive Managing Director  
CA RE #00806069  
t 408-987-4178  
Martin.Chiechi@nmrk.com

1805 LITTLE ORCHARD STREET / SAN JOSE, CA 95125



**Martin Chiechi**

*Executive Managing Director*

CA RE #00806069

t 408-987-4178

Martin.Chiechi@nrmk.com

**NEWMARK**