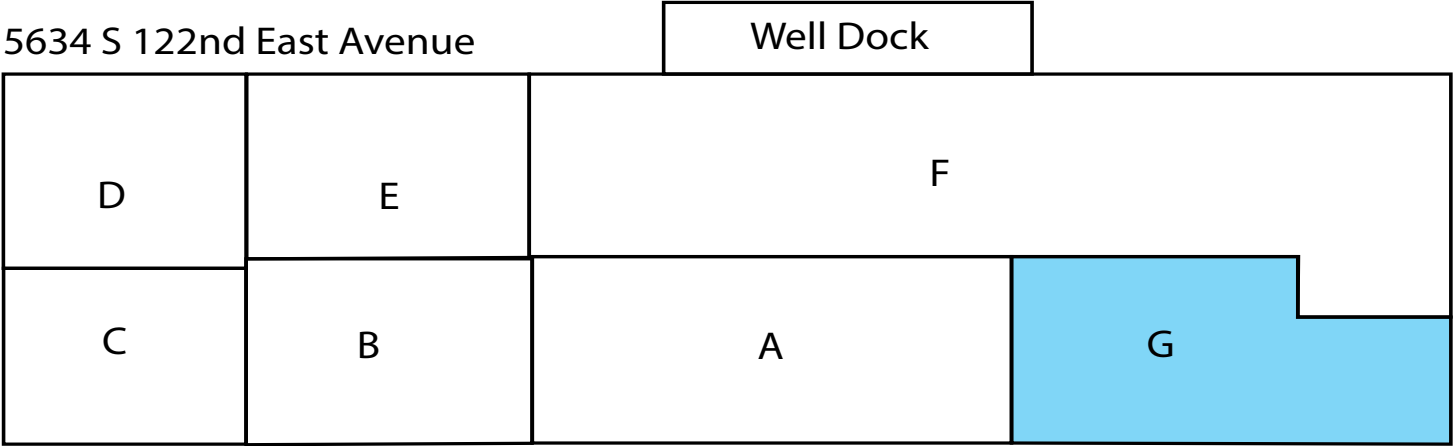
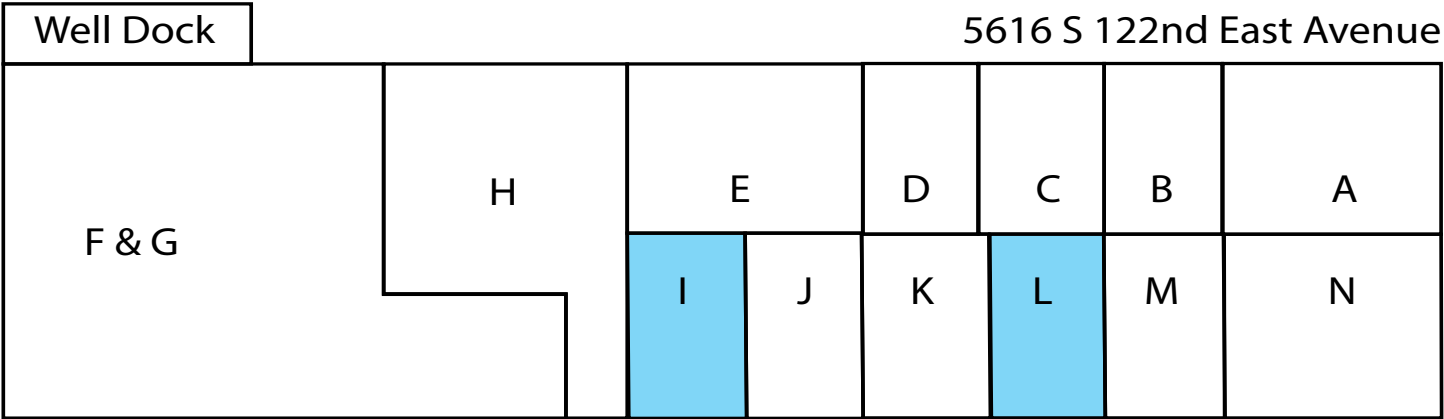


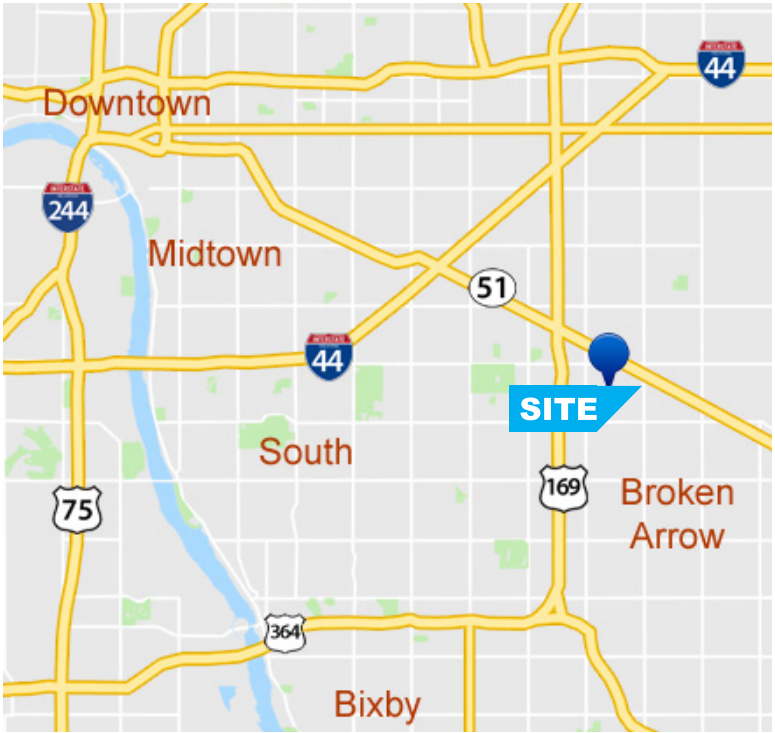
Available Spaces



Metro Warehouse is a ±72,410 square foot light industrial facility comprised of two freestanding buildings containing suites starting from ±1,500 square feet. Located within close proximity to the BA Expressway and Highway 169.

Property Features

- ±72,410 SF Total
- Suites Available:
 - » 5616 - Suite I ±1,500 SF
 - » 5616 - Suite L ±1,500 SF
 - » 5634 - Suite G ±4,968 SF
- 16’ Clear height
- Built in 1982
- Dock High and Grading Level Loading
- Zoned IL - Light Industrial
- Close Proximity to Broken Arrow Expressway and Highway 169



Call Shawna Hale, CCIM, or John Watchous at **918.935.2010**

shale@wigginprop.com | jwatchous@wigginprop.com | wigginprop.com

This material is provided for information purposes only. It is from sources believed to be reliable. However, Wiggin Properties makes no warranties or representations, expressed or implied, as to the accuracy or sufficiency of the information. It is presented subject to errors, omissions, changes or withdrawal without notice. Square footage is provided by the local County Assessor or the Owner. Photos and graphics with copyrights by Costar, Google, Wiggin Properties and independent contractors are used with permission.

Call Shawna Hale, CCIM, or John Watchous at **918.935.2010**

shale@wigginprop.com | jwatchous@wigginprop.com | wigginprop.com

This material is provided for information purposes only. It is from sources believed to be reliable. However, Wiggin Properties makes no warranties or representations, expressed or implied, as to the accuracy or sufficiency of the information. It is presented subject to errors, omissions, changes or withdrawal without notice. Square footage is provided by the local County Assessor or the Owner. Photos and graphics with copyrights by Costar, Google, Wiggin Properties and independent contractors are used with permission.

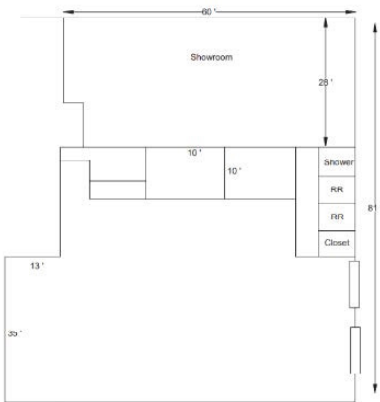
5616 S 122nd E Ave Suite B

- ±1,500 SF Total*
- ±154 SF Office*
- (1) 10' x 12' Drive-In Door
- 3 Phase Electric Service
- Zoned IL



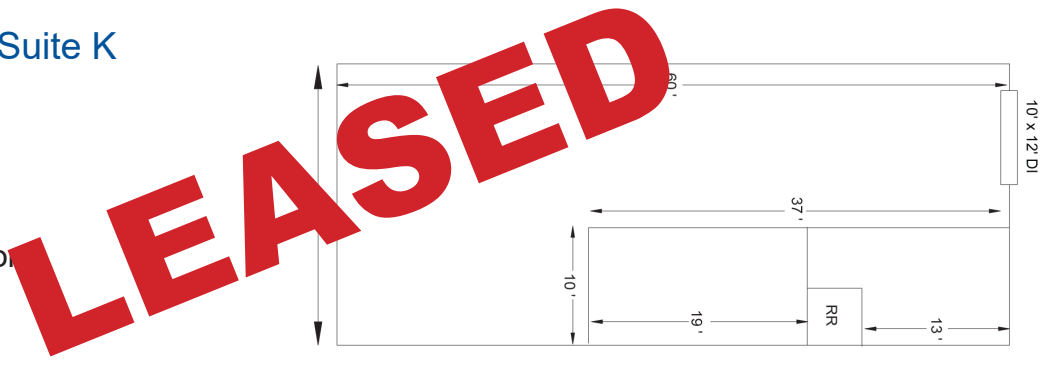
5634 S 122nd E Ave Suite G

- ±4,968 SF Total*
- ±2,270 SF Office*
- (2) 10' x 14' Drive-In Door
- Centrally Located
- 3 Phase Electric Service



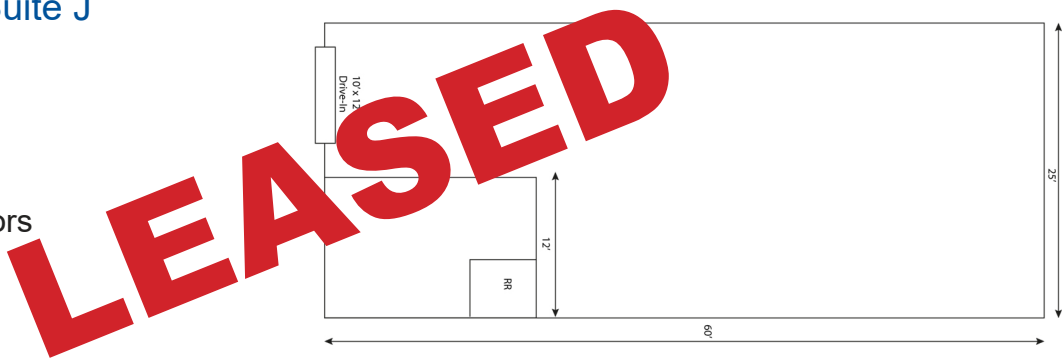
5616 S 122nd E Ave Suite K

- ±1,500 SF Total*
- ±216 SF Office*
- (1) 10' x 12' Drive-In Door
- 16' Clear Height
- Zoned IL



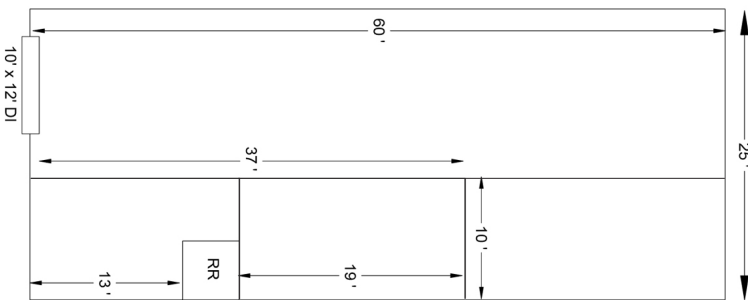
5616 S 122nd E Ave Suite J

- ±1,500 SF Total*
- New Office Buildout
- (2) 10' x 12' Drive-In Doors
- Covered Dock Well



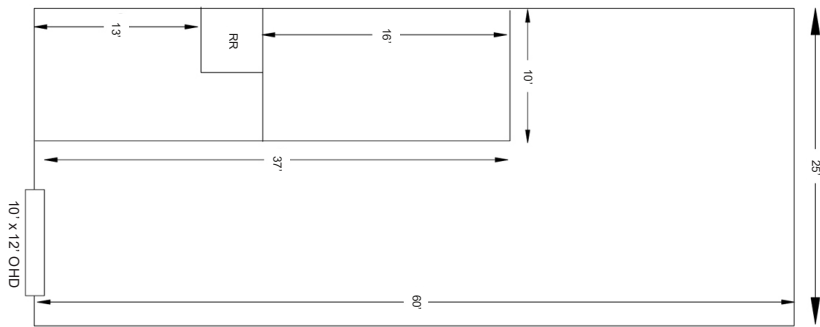
5616 S 122nd E Ave Suite L

- ±1,500 SF Total*
- ±560 SF Office*
- (1) 10' x 12' Drive-In Door
- 16' Clear Height
- Zoned IL



5616 S 122nd E Ave Suite I

- ±1,500 SF
- Reception Area, (1) Private Office, Restroom
- (1) 10' x 12' Drive-In Door
- 16' Clear Height



Call Shawna Hale, CCIM, or John Watchous at 918.935.2010

Call Shawna Hale, CCIM, or John Watchous at 918.935.2010