



# BUILD-TO-SUIT OPPORTUNITY

## PROPERTY HIGHLIGHTS:

---

- 1.69-acre site in Brunswick County
- Two lots available:
- Lot 1: 0.89 AC
- Lot 2: 0.80 AC
- 12,500 SF build-to-suit opportunity
- Lots are part of a seven lot subdivision located one mile from Novant Hospital directly off HWY 17
- Area is referred to as the Brunswick Medical Mile due to close proximity to Novant Health Hospital
- High visibility with 400 feet of frontage on HWY 17

53 & 57 PHYSICIANS DRIVE NW  
SUPPLY, NC 28462

## CONTACT:

---

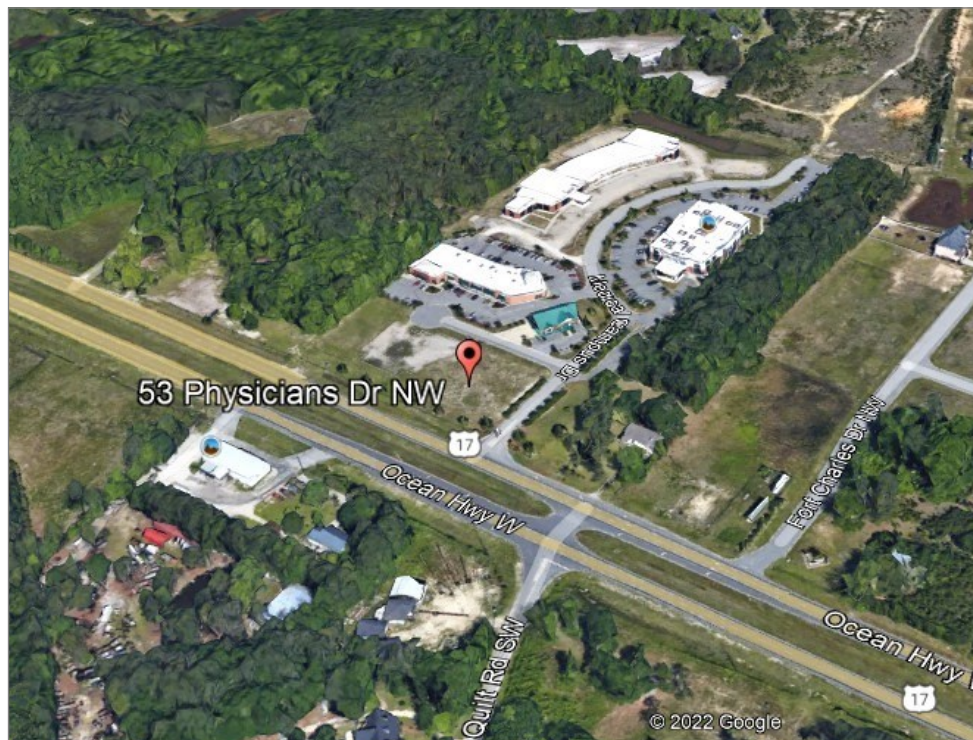
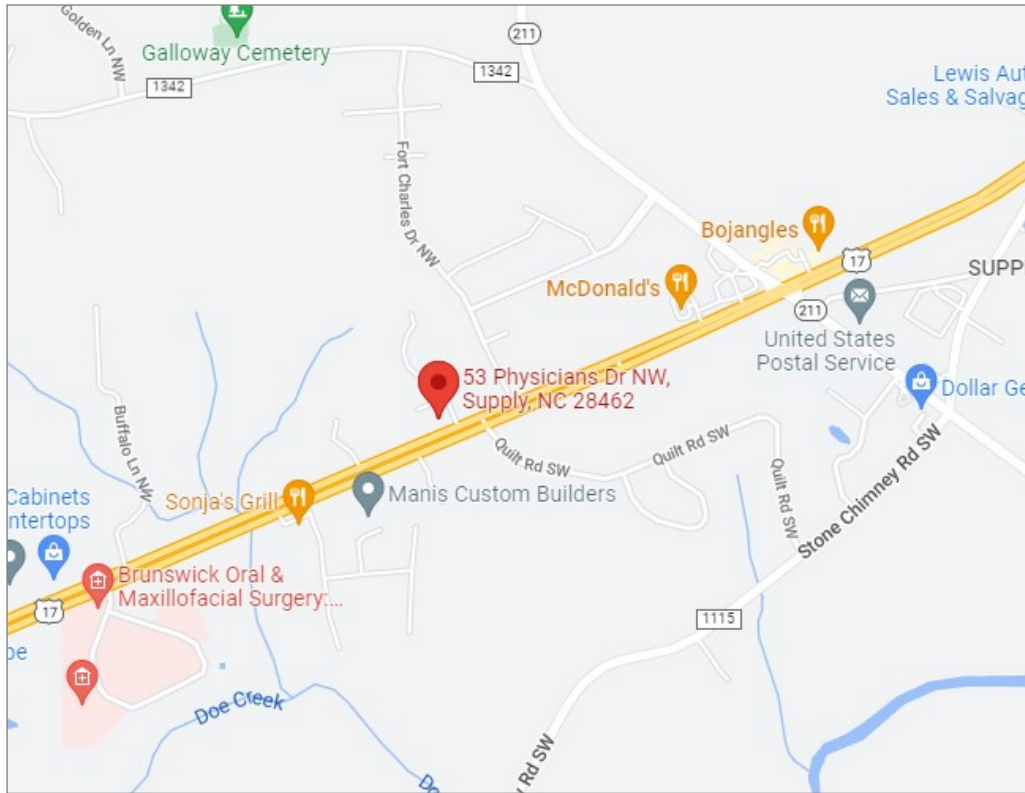
Andrew Lawler  
Regional Partner (NC)  
(704) 942-1954  
alawler@cciin.com

CORNERSTONE COMPANIES, INC.  
8902 N Meridian Street, Suite 205  
Indianapolis, IN 46260



For more, visit: [CornerstoneCompaniesInc.com](http://CornerstoneCompaniesInc.com)

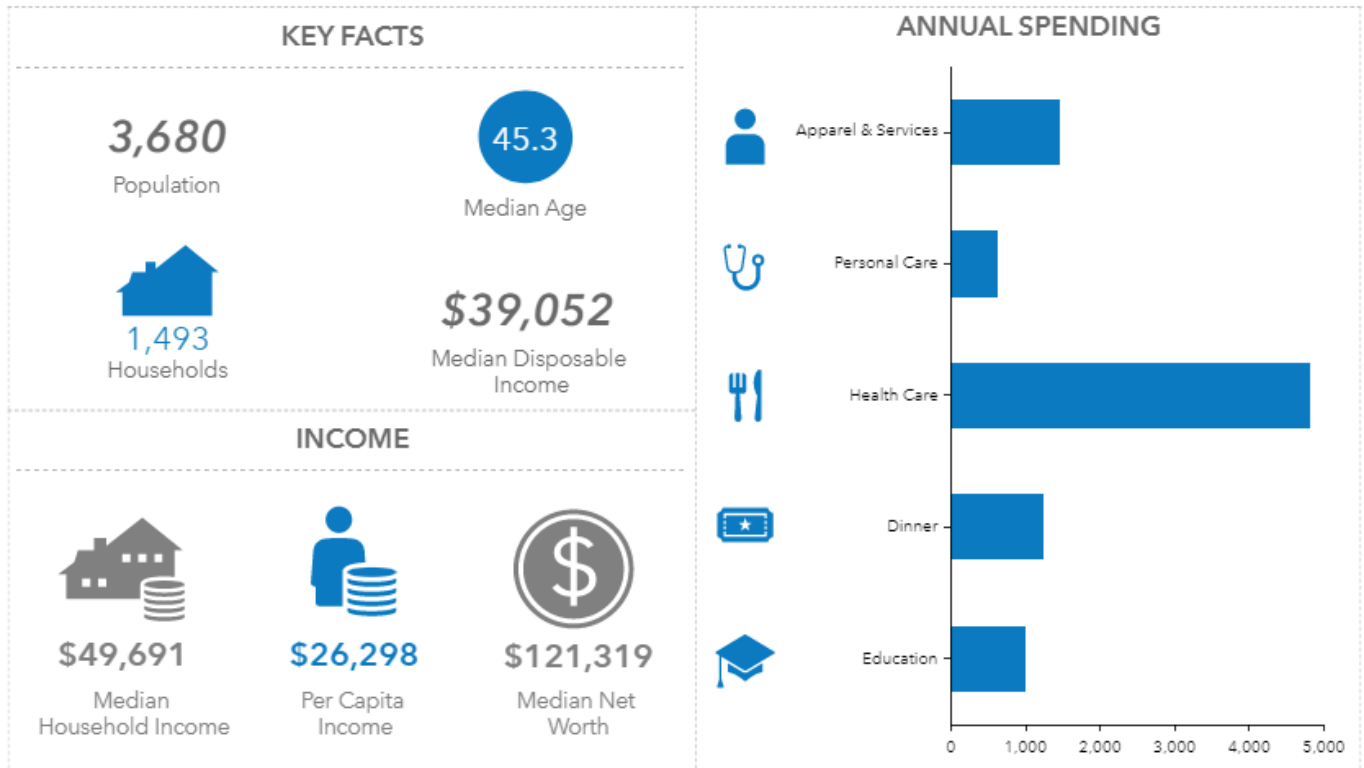
# LOCATION



For more, visit: [CornerstoneCompaniesInc.com](https://www.cornerstonecompaniesinc.com)



# DEMOGRAPHICS



## HEALTH CARE EXPENDITURES



**\$3,182**

Annual Health Insurance Expenditures



**\$1,634**

Medical Care

Health Care (Consumer Spending)	Annual Expenditure
Blue Cross/Blue Shield	\$876
Medicare Payments	\$721
Physician Services	\$187
Dental Services	\$304
Eyecare Services	\$52
Lab Tests/X-rays	\$52
Hospital Room & Hospital Service	\$157
Convalescent/Nursing Home Care	\$21



For more, visit: [CornerstoneCompaniesInc.com](http://CornerstoneCompaniesInc.com)