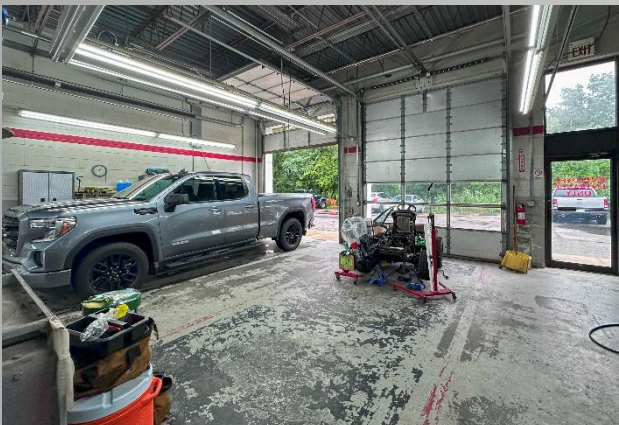


FOR LEASE

NEW LISTING!

COMMERCIAL RETAIL SPACE

507 BOSTON TURNPIKE, SHREWSBURY

**Rate:** \$25 NNN + utilities**Space:** 1,440 sf – 2,880 sf

- Zoned CB (Commercial Business)
- 3 Drive-in doors
- Town sewer
- Ideal for auto glass, detailing, tinting, spray-on bedliner businesses, etc.
- Spray booth
- 1000 sf of Basement storage available
- 3 phase 120/208V 225 amps
- Located on Route 9 at a lit intersection

RICK KAPLAN

o: 508.541.1350

m: 508.561.0445

rickkaplan@remaxexec.com**CASEY KILLAM**

o: 508.541.1350

m: 774.287.2084

caseykillam@remaxexec.com