

**4260 Glendale Milford Rd**

**Aeropointe Medical Building**

**Blue Ash, OH 45242**

**Available  
For Lease**

Medical Office Space

Lower Level    \$14.00 Gross    1,551 SF

---

Suite 101        \$16.95 NNN        4,256 SF

---

Ryan Van Dulman  
Bob Fessler

**NABergman**

+1 513 769 1700

bergmancommercial.com

4695 Lake Forest Drive, Suite 100, Cincinnati, OH 45242

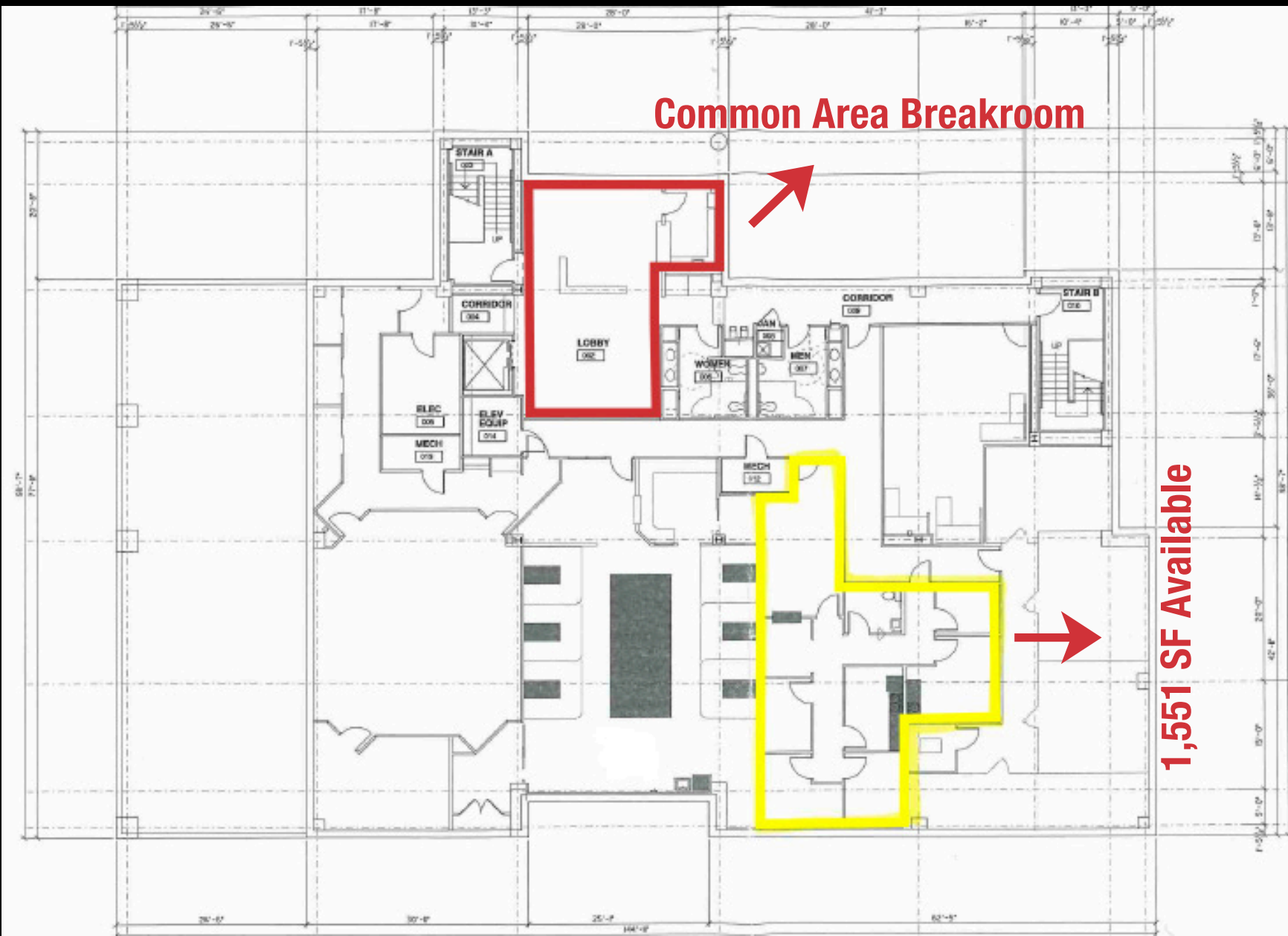
## 4260 Glendale Milford Rd

4260 Glendale Milford Road is located within the Aeropointe Medical Building, a highly visible property in Blue Ash directly across from Madtree Brewing and just minutes from Summit Park, the city's premier 130-acre community destination featuring walking and biking trails, playgrounds, sports fields, restaurants, year-round events, and an observation tower that attracts visitors from across the region. This central location provides excellent visibility and accessibility, with immediate connections to I-71, I-275, and Ronald Reagan Cross County Highway, and is surrounded by a strong mix of medical offices, corporate employers, and lifestyle amenities, making it an ideal spot for healthcare practices seeking both convenience and high-profile exposure.

### Highlights:

- Across the street from Madtree Brewing and near Summit Park
- Multiple medical and professional suites available
- Strong visibility and signage potential
- Convenient access to I-71, I-275, and Ronald Reagan Highway
- Surrounded by established medical providers, corporate offices, and lifestyle amenities
- Ample parking available on-site

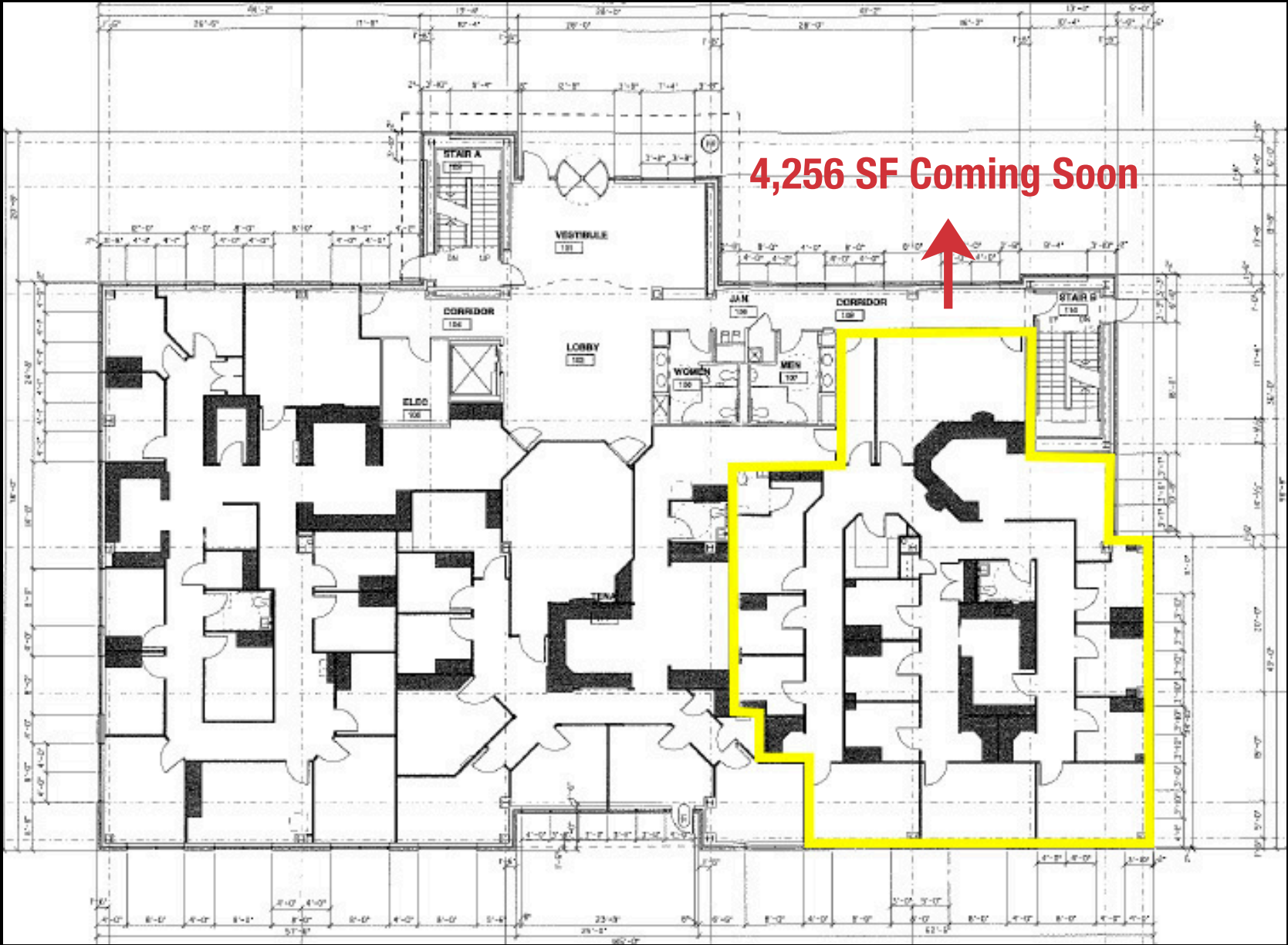




**1,551 SF Available**







4,256 SF Coming Soon

For Lease | 4260 Glendale Milford Rd



# THANK YOU

STAY CONNECTED



**Ryan Van Dulman**

rvandulman@bergman-group.com  
513.377.0440

**Bob Fessler**

bfessler@bergman-group.com  
513.322.6312