

FOR LEASE

20643, 20641 & 20633 Sussex Hwy
Seaford, DE 19973

FOR LEASE



THE SPACE

Location

20643, 20641 & 20633 Sussex Hwy
Seaford, DE 19973

HIGHLIGHTS

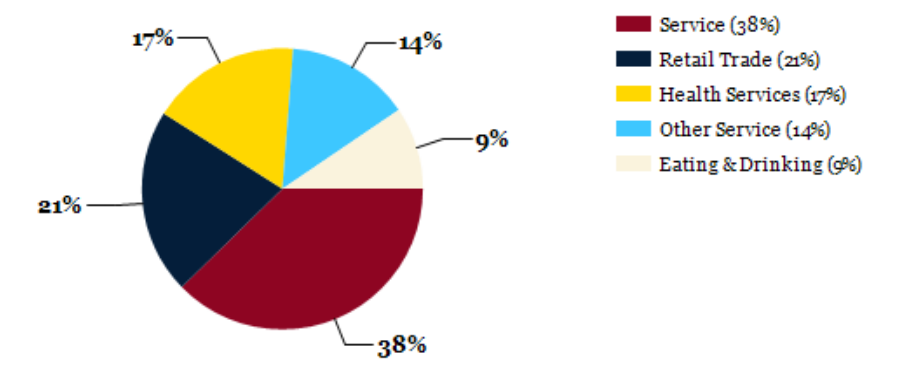
- ⇒ 20643 - 4,200 +/- Sf Building
- ⇒ 20641 - 2,000 +/- SF 20633 - 3,300 +/- SF
- ⇒ Zoned: C-1
- ⇒ Drive in Door 20643
- ⇒ MLS # DESU2062652
- ⇒ MLS # DESU2062652
- ⇒ Price: \$7 - 10.00 PSF, NNN

POPULATION		
1.00 MILE	3.00 MILE	5.00 MILE
1,167	10,534	28,812

AVERAGE HOUSEHOLD INCOME		
1.00 MILE	3.00 MILE	5.00 MILE
\$89,170	\$84,073	\$84,899

NUMBER OF HOUSEHOLDS		
1.00 MILE	3.00 MILE	5.00 MILE
459	4,134	10,982

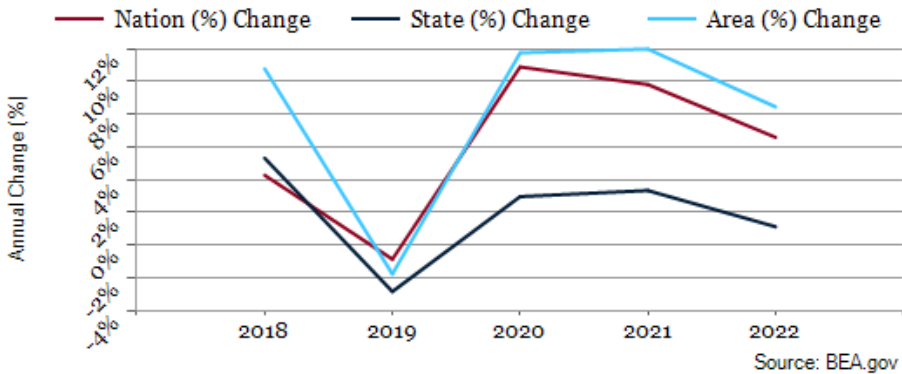
Major Industries by Employee Count



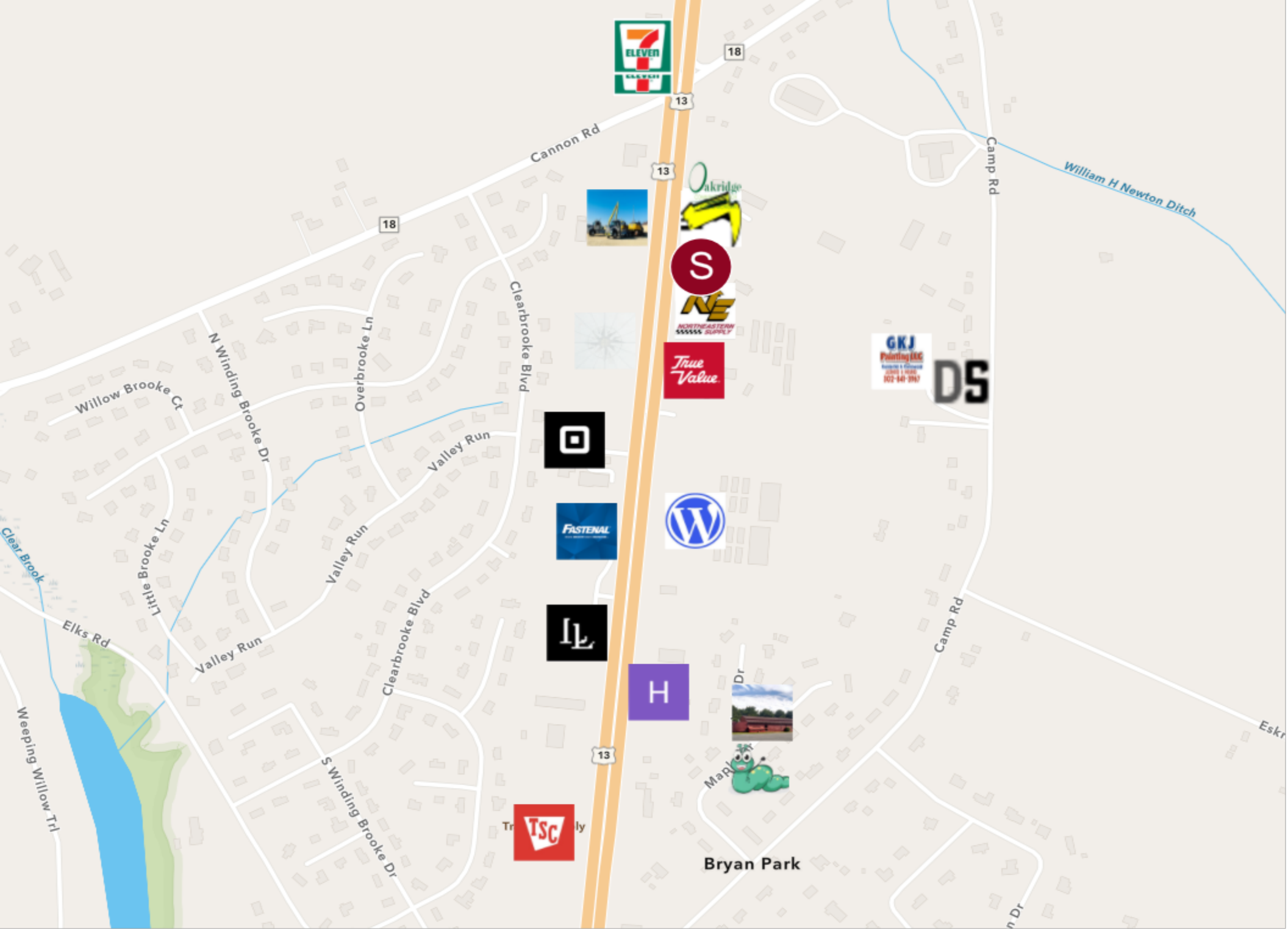
Largest Employers

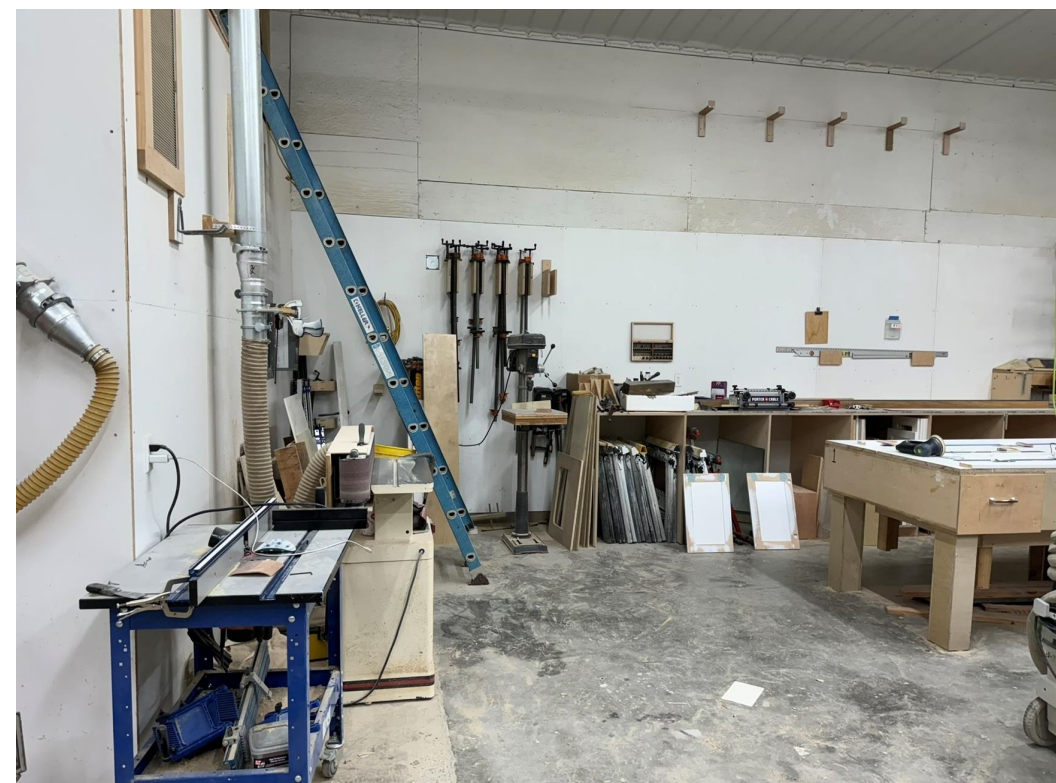
US Army	675,000
Merck	10,000
The Home Depot	10,000
Amazon	10,000
DuPont	10,000
Hanesbrands	10,000
NIKE	10,000
Wal-Mart Stores Inc.	5,000

Sussex County GDP Trend











20643





LEFT PICS 20641

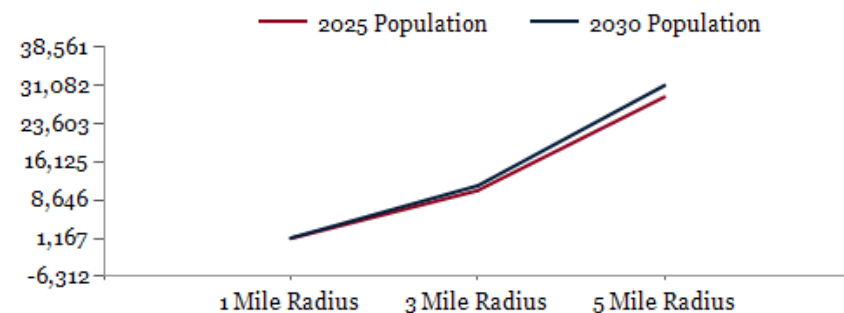


Right Pics 20633

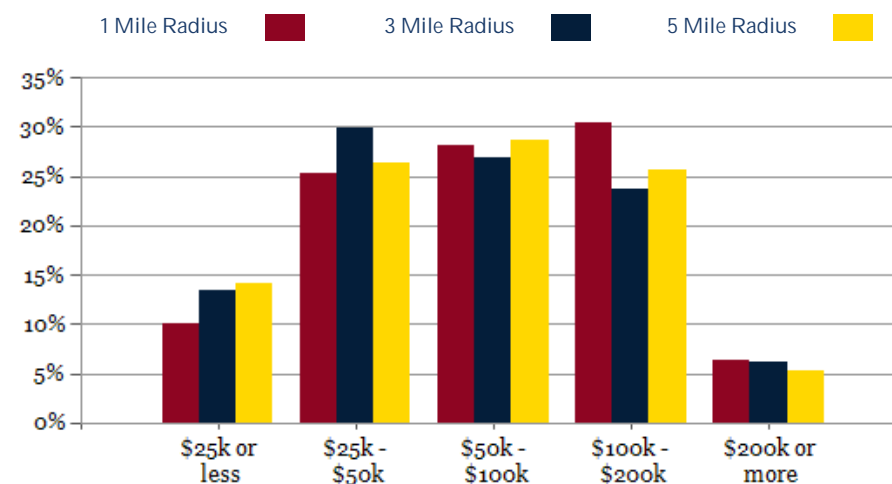


POPULATION	1 MILE	3 MILE	5 MILE
2000 Population	664	5,794	21,154
2010 Population	895	7,572	24,421
2025 Population	1,167	10,534	28,812
2030 Population	1,239	11,462	31,082
2025 African American	175	2,272	6,930
2025 American Indian	11	112	264
2025 Asian	43	230	487
2025 Hispanic	160	1,842	4,697
2025 Other Race	91	1,103	2,695
2025 White	762	5,988	15,996
2025 Multiracial	84	825	2,433
2025-2030: Population: Growth Rate	6.00%	8.50%	7.65%

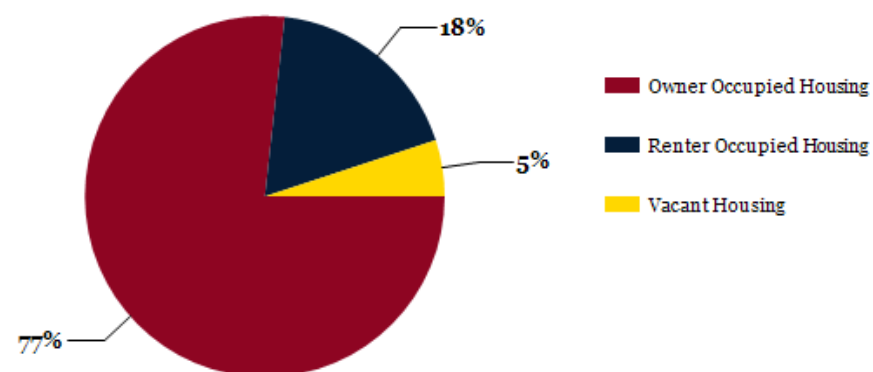
2025 HOUSEHOLD INCOME	1 MILE	3 MILE	5 MILE
less than \$15,000	32	297	875
\$15,000-\$24,999	14	254	674
\$25,000-\$34,999	57	504	1,157
\$35,000-\$49,999	59	733	1,740
\$50,000-\$74,999	96	730	1,932
\$75,000-\$99,999	33	383	1,206
\$100,000-\$149,999	103	686	1,932
\$150,000-\$199,999	37	293	889
\$200,000 or greater	29	253	577
Median HH Income	\$67,484	\$60,433	\$63,227
Average HH Income	\$89,170	\$84,073	\$84,899



2025 Household Income



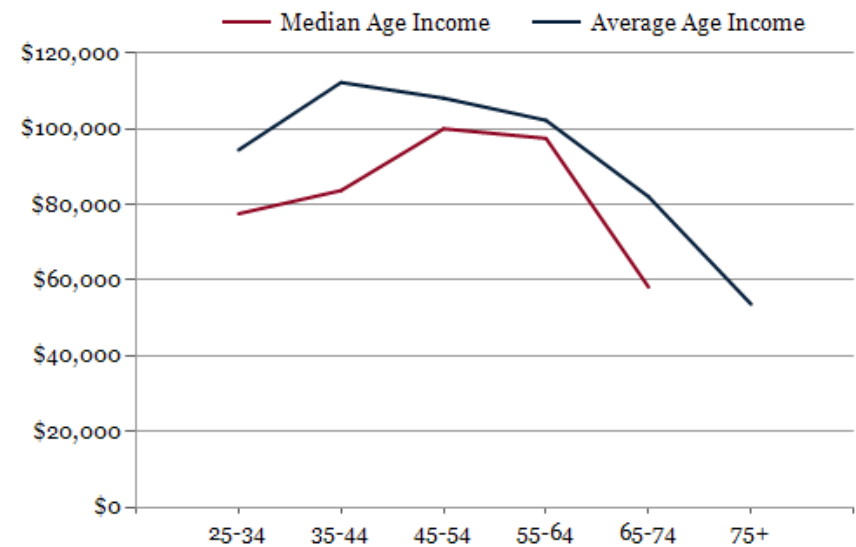
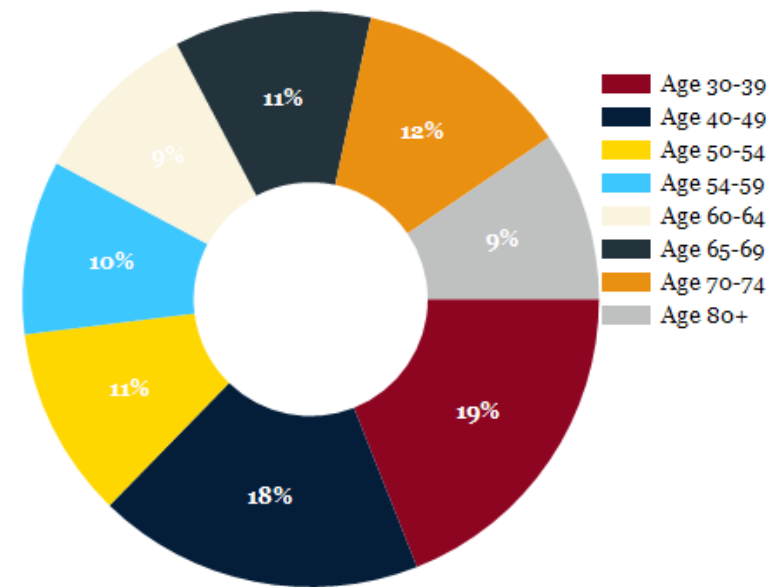
2025 Own vs. Rent - 1 Mile Radius



Source: esri

2025 POPULATION BY AGE	1 MILE	3 MILE	5 MILE
2025 Population Age 30-34	65	554	1,662
2025 Population Age 35-39	71	577	1,722
2025 Population Age 40-44	64	551	1,717
2025 Population Age 45-49	67	496	1,462
2025 Population Age 50-54	77	550	1,589
2025 Population Age 55-59	70	559	1,636
2025 Population Age 60-64	68	677	1,824
2025 Population Age 65-69	79	838	1,906
2025 Population Age 70-74	87	901	1,860
2025 Population Age 75-79	68	753	1,553
2025 Population Age 80-84	37	347	819
2025 Population Age 85+	22	184	621
2025 Population Age 18+	926	8,337	22,310
2025 Median Age	44	45	42
2030 Median Age	45	47	43

2025 INCOME BY AGE	1 MILE	3 MILE	5 MILE
Median Household Income 25-34	\$77,542	\$68,388	\$70,452
Average Household Income 25-34	\$94,421	\$91,448	\$89,720
Median Household Income 35-44	\$83,691	\$71,090	\$78,527
Average Household Income 35-44	\$112,256	\$100,033	\$98,890
Median Household Income 45-54	\$100,000	\$75,710	\$81,181
Average Household Income 45-54	\$108,102	\$99,804	\$101,478
Median Household Income 55-64	\$97,475	\$63,421	\$65,665
Average Household Income 55-64	\$102,231	\$91,293	\$89,948
Median Household Income 65-74	\$58,186	\$51,478	\$51,326
Average Household Income 65-74	\$82,047	\$81,074	\$78,369
Average Household Income 75+	\$53,663	\$60,293	\$62,696



FOR LEASE

CONFIDENTIALITY and DISCLAIMER

The information contained in the following offering memorandum is proprietary and strictly confidential. It is intended to be reviewed only by the party receiving it from R&R Commercial Realty and it should not be made available to any other person or entity without the written consent of R&R Commercial Realty.

By taking possession of and reviewing the information contained herein the recipient agrees to hold and treat all such information in the strictest confidence. The recipient further agrees that recipient will not photocopy or duplicate any part of the offering memorandum. If you have no interest in the subject property, please promptly return this offering memorandum to R&R Commercial Realty. This offering memorandum has been prepared to provide summary, unverified financial and physical information to prospective tenants, and to establish only a preliminary level of interest in the subject property.

The information contained herein is not a substitute for a thorough due diligence investigation. R&R Commercial Realty has not made any investigation, and makes no warranty or representation with respect to the income or expenses for the subject property, the future projected financial performance of the property, the size and square footage of the property and improvements, the presence or absence of contaminating substances, PCBs or asbestos, the compliance with local, state and federal regulations, the physical condition of the improvements thereon, or financial condition or business prospects of any tenant, or any tenant's plans or intentions to continue its occupancy of the subject property.

The information contained in this offering memorandum has been obtained from sources we believe reliable; however, R&R Commercial Realty has not verified, and will not verify, any of the information contained herein, nor has R&R Commercial Realty conducted any investigation regarding these matters and makes no warranty or representation whatsoever regarding the accuracy or completeness of the information provided. All potential buyers must take appropriate measures to verify all of the information set forth herein. Prospective buyers shall be responsible for their costs and expenses of investigating the subject property.

Exclusively Marketed by:

Keith Walpole

R&R Commercial Realty

(302) 236-7053

keithwalpole@yahoo.com



<http://www.randrcommercialrealty.com>

powered by CREOP