

97 WASHINGTON STREET

CORNER OF RECTOR & WASHINGTON STREETS | FIDI



97 WASHINGTON STREET

PROPERTY DETAILS

SIZE: 1,600 SF Ground Floor
7,000 SF Second Floor

FRONTAGE: Ground Floor - 85' wraparound
2nd Floor - 130' on Washington Street

CEILING HEIGHT: 20'

POSSESSION: Immediate

TRANSPORTATION: 1 2 4 5 R W

HIGHLIGHTS

- Formerly *Sauce & Barrel* Restaurant
- Built-out speakeasy
- Exceptional Visibility Fully vented gas
- Situated at the base of luxury condo building with 450 units
- Connected to the Greenwich Club Residences
- Adjacent to world-renowned architect Rafael Vinoly's latest masterpiece and supertall residential tower, The Greenwich, with 272 units
- Surrounded by multiple subway lines including The Fulton Center and World Trade Center transportation hubs
- Within walking distance to global fashion labels, indoor malls (*Brookfield Place, Westfield, South Street Seaport*), and food halls
- Neighboring tenants:



All information supplied in this marketing presentation and/or flyer is from sources deemed reliable and is furnished subject to errors, omissions, modifications, removal of listings from sale/lease and to any listing condition. Any square footage, dimensions, floor plans and/or technical data set forth are approximations and are subject to further elaboration/confirmation.

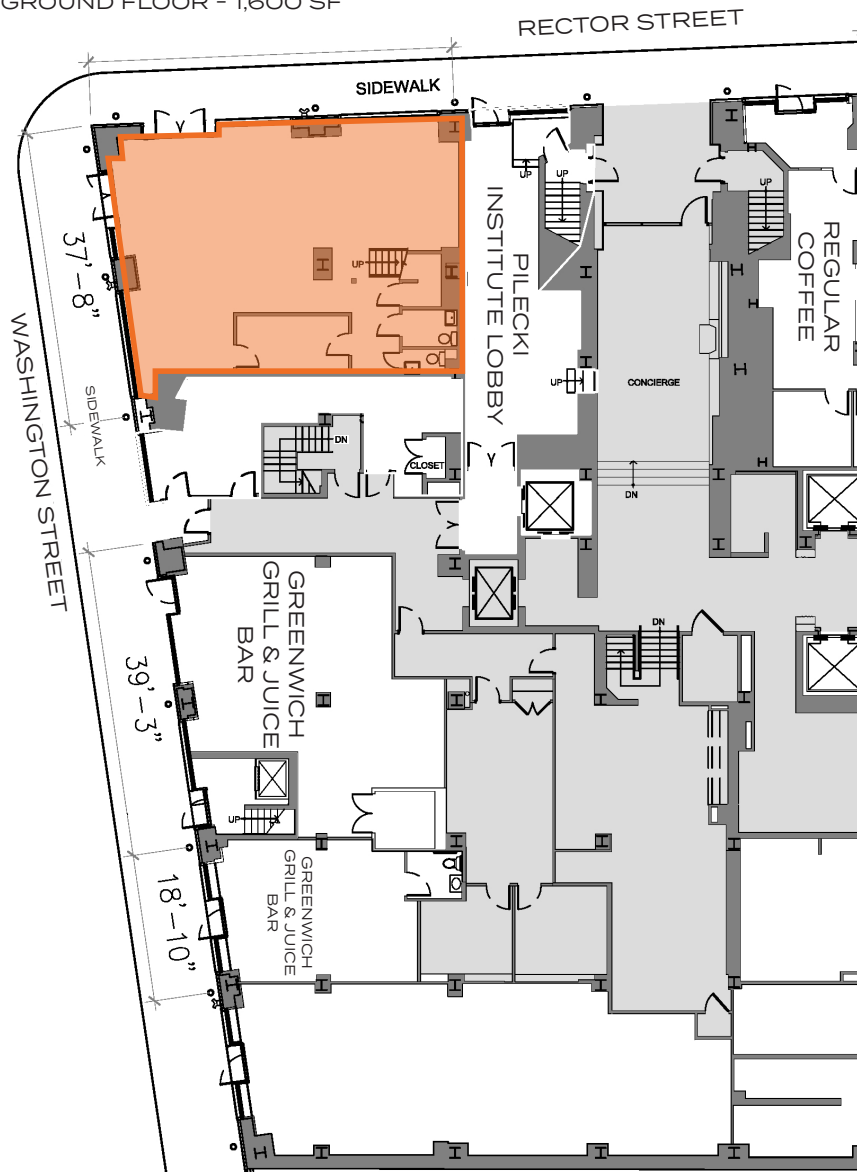


97 WASHINGTON STREET

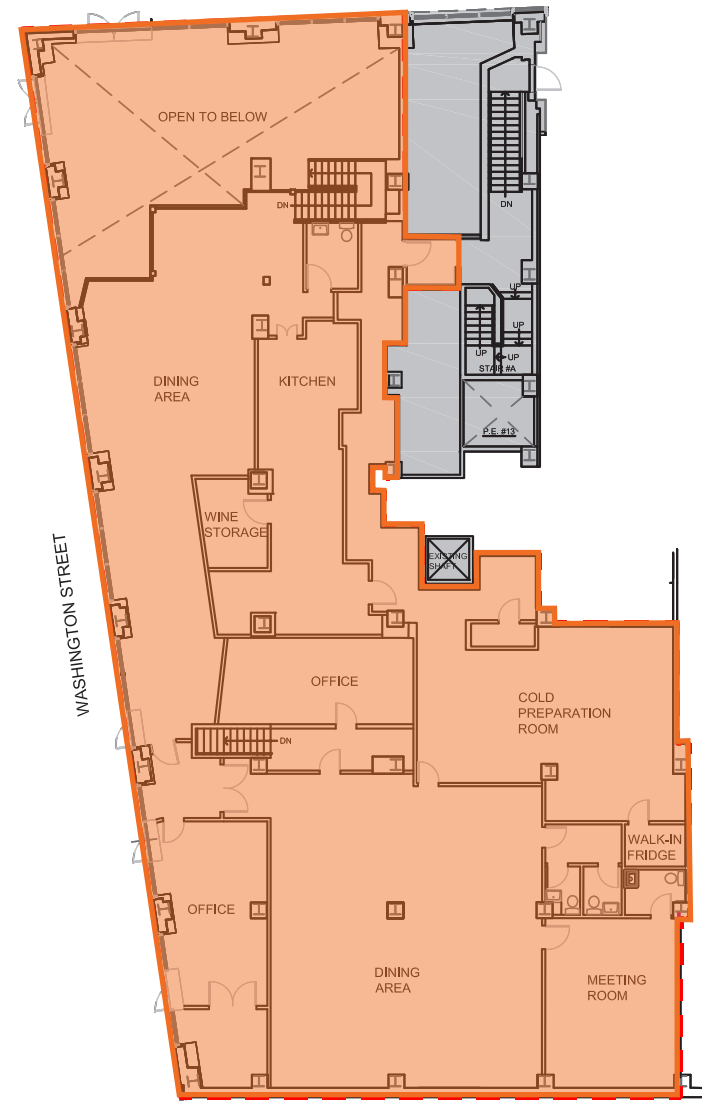
CORNER OF RECTOR & WASHINGTON STREETS | FIDI

FLOOR PLANS:

GROUND FLOOR - 1,600 SF



MEZZANINE - 7,000 SF



97 WASHINGTON STREET

CORNER OF RECTOR & WASHINGTON STREETS | FIDI

INTERIORS:



FOR MORE INFORMATION, PLEASE CONTACT:

SOPHIA GAINES

M: 917.902.6352
SGaines@ksrny.com

ALBERT J. MANOPLA

M: 212.380.8369
AManopla@ksrny.com

SAM SABIN

M: 917.846.5367
SSabin@ksrny.com



1385 Broadway
New York, NY 10018
212.417.9217 | ksrny.com

WASHINGTON