




1940 USG Drive, Libertyville, IL

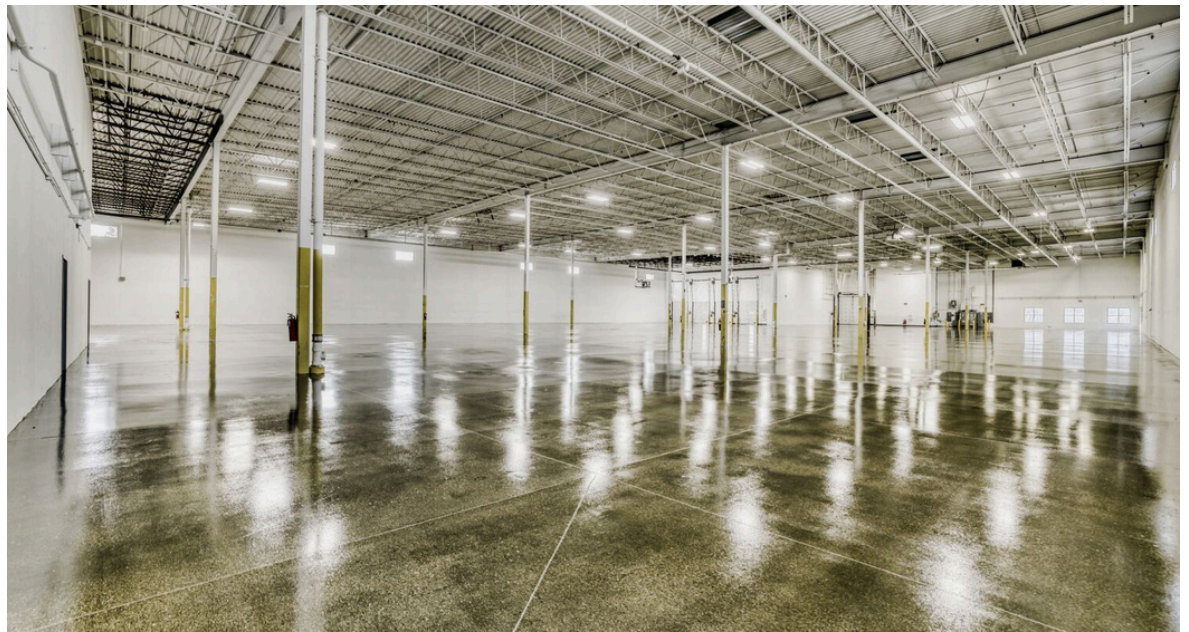
48,529 RSF Available for Sublease
December 31, 2036 LXD

 **JLL** SEE A BRIGHTER WAY

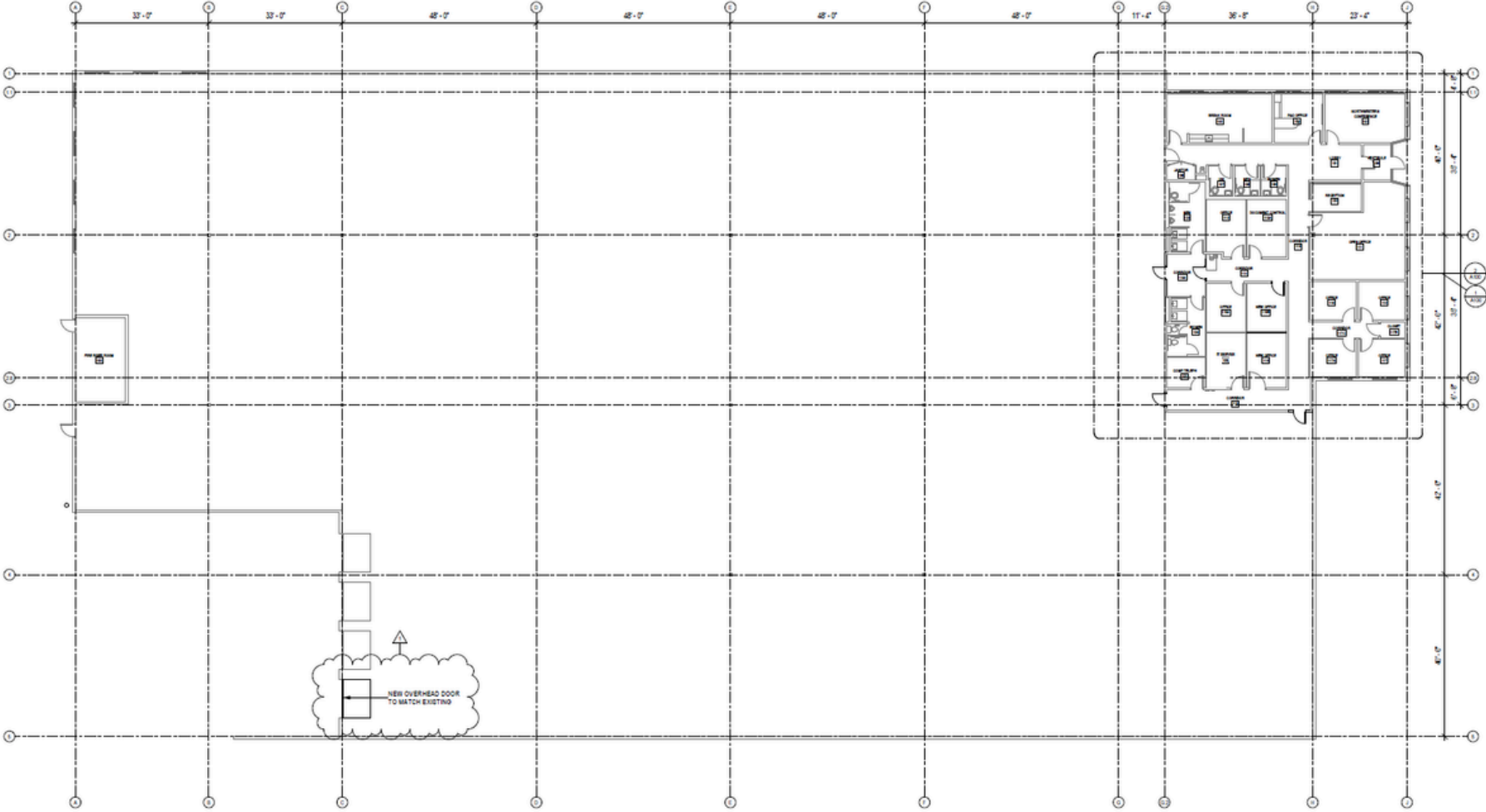
1st Floor | 48,529 RSF

Highlights

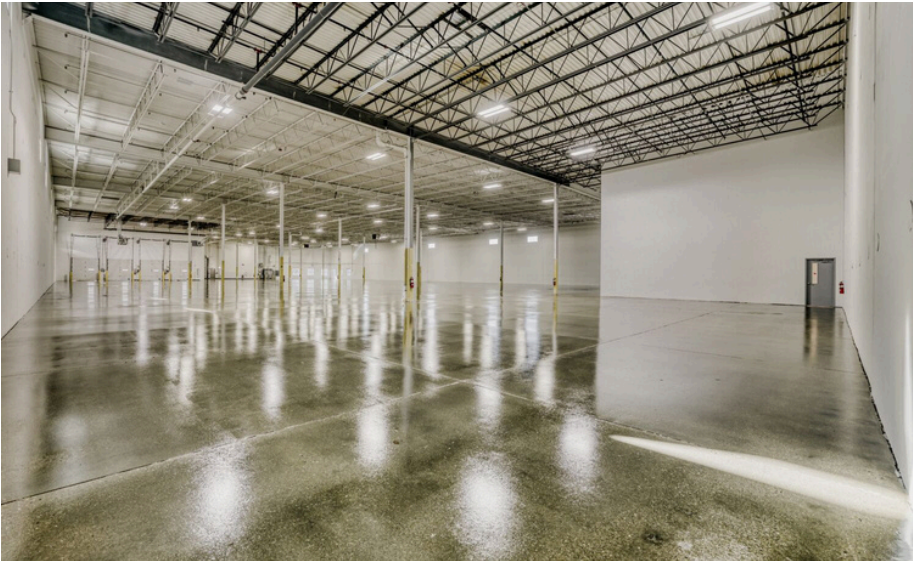
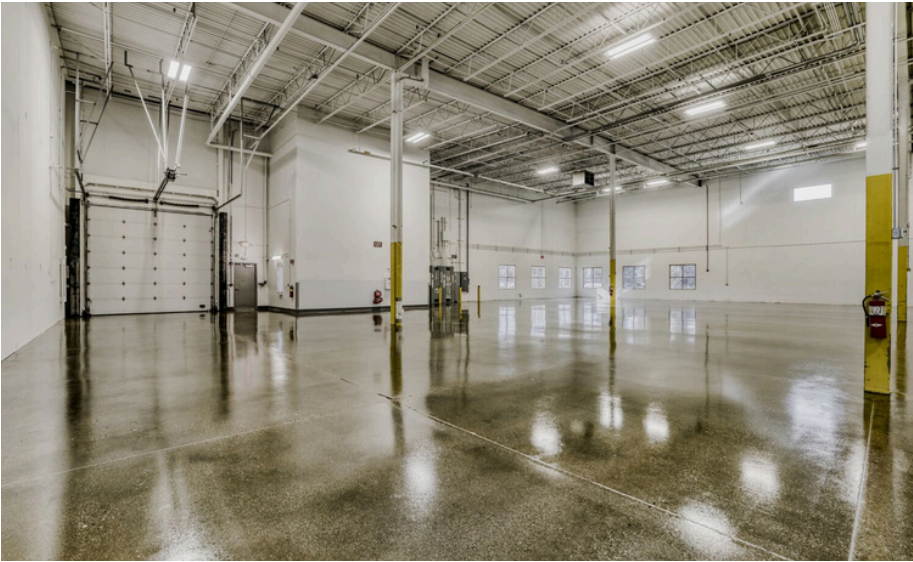
- Newly renovated industrial warehouse
- Free standing 48,529 SF
- 64 parking stalls
- Four (4) exterior docks
- One (1) drive-in door
- Great corporate HQ location in Lake County
- 24 ft ceiling
- Bay Size: 42' x 45'



1st Floor | 48,529 RSF

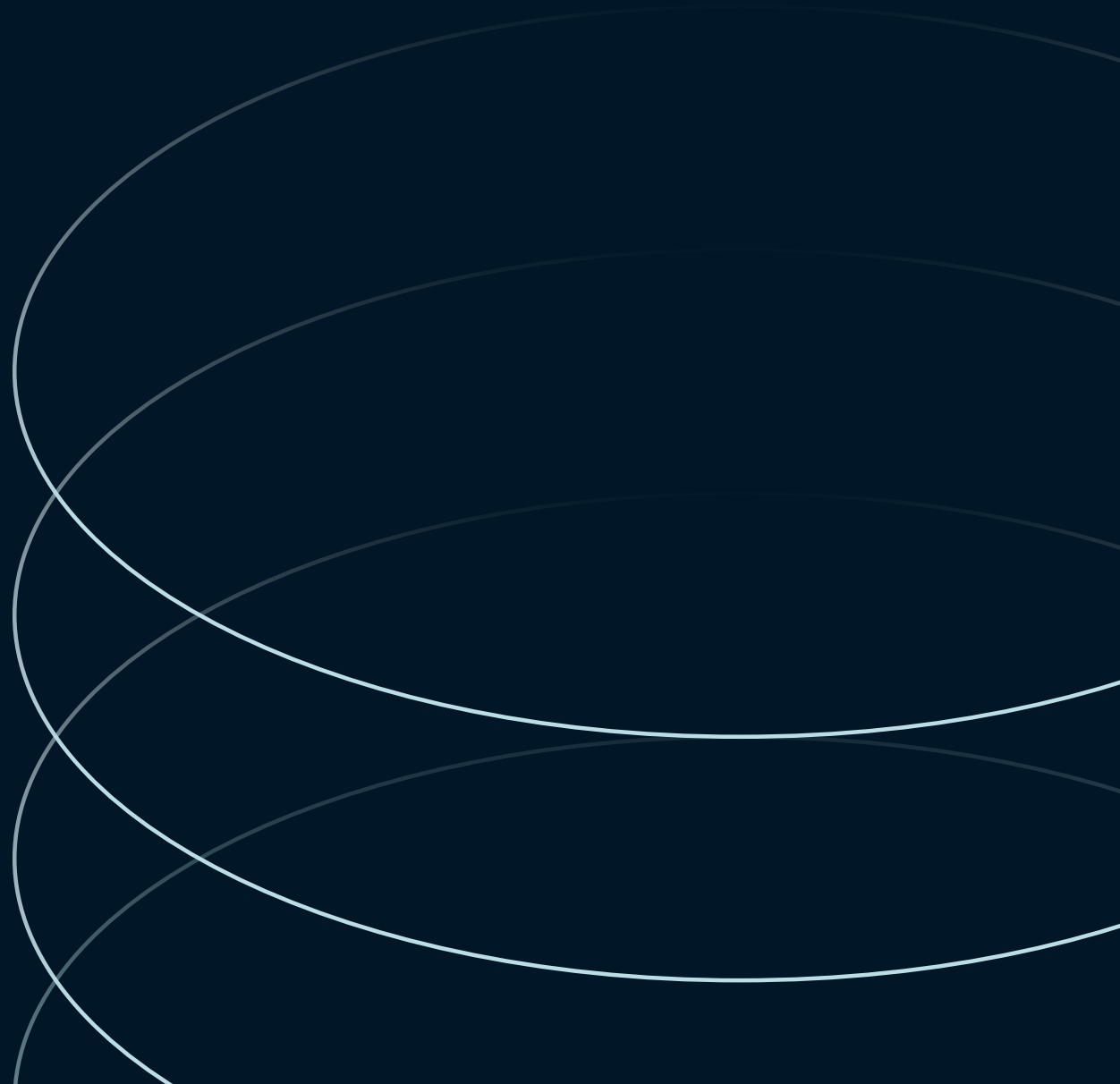


Space Photos



Space Photos





Paul Giannopoulos

Senior Managing Director
paul.giannopoulos@jll.com
+1 312 952 0863

Max Zwolan

Managing Director
max.zwolan@jll.com
+1 734 255 5810

Sophia Spinell

Vice President
sophia.spinell@jll.com
+1 708 522 2826