

161 EAST RIVULON BOULEVARD | GILBERT, ARIZONA 85297

CLASS A OFFICE SPACE AVAILABLE FOR SUBLEASE



Todd Hamilton

Partner/Designated Broker
602.909.8759
todd@citywidecre.com

Chad Neppi

Senior Vice President
602.695.4909
cneppi@citywidecre.com

Vince Utucu

Sales & Leasing
773.807.6674
vince@citywidecre.com



2122 East Highland Avenue, Suite 225 • Phoenix, Arizona 85016 602.313.1000 • citywidecre.com

All information furnished is from sources deemed reliable. No representation is made as to the accuracy thereof and it is submitted subject to errors, omissions, changes, or withdrawal without notice and to any special listings conditions, including the rate and manner of payment of commissions for particular offerings imposed by principals or agreed to by the company, the terms of which are available to interested principals or brokers. All dimensions are approximate. Owner and/or Broker make no representations expressed or implied as to the accuracy of floor plan/site plan dimensions.

PROPERTY DETAILS

- +/- 10,207 Square Feet, Suite 210
- Class A, Second Story Office Space
- Lease Rate: \$31.50 PSF, Full Service
- 2 Large Conference Rooms, 13 Offices, Executive Office, 40 Cubicles, Lobby with Locked Secondary Entrance
- Lease Expires November 30, 2028
- Fully Furnished
- Zoned HVAC Systems
- Key Card for Access and Maximum Tenant Security
- Ample Surface & Covered Parking
- Adjacent to Gilbert Road & AZ 202
- Walking Distance to Retail, Restaurants and Fitness

Todd Hamilton

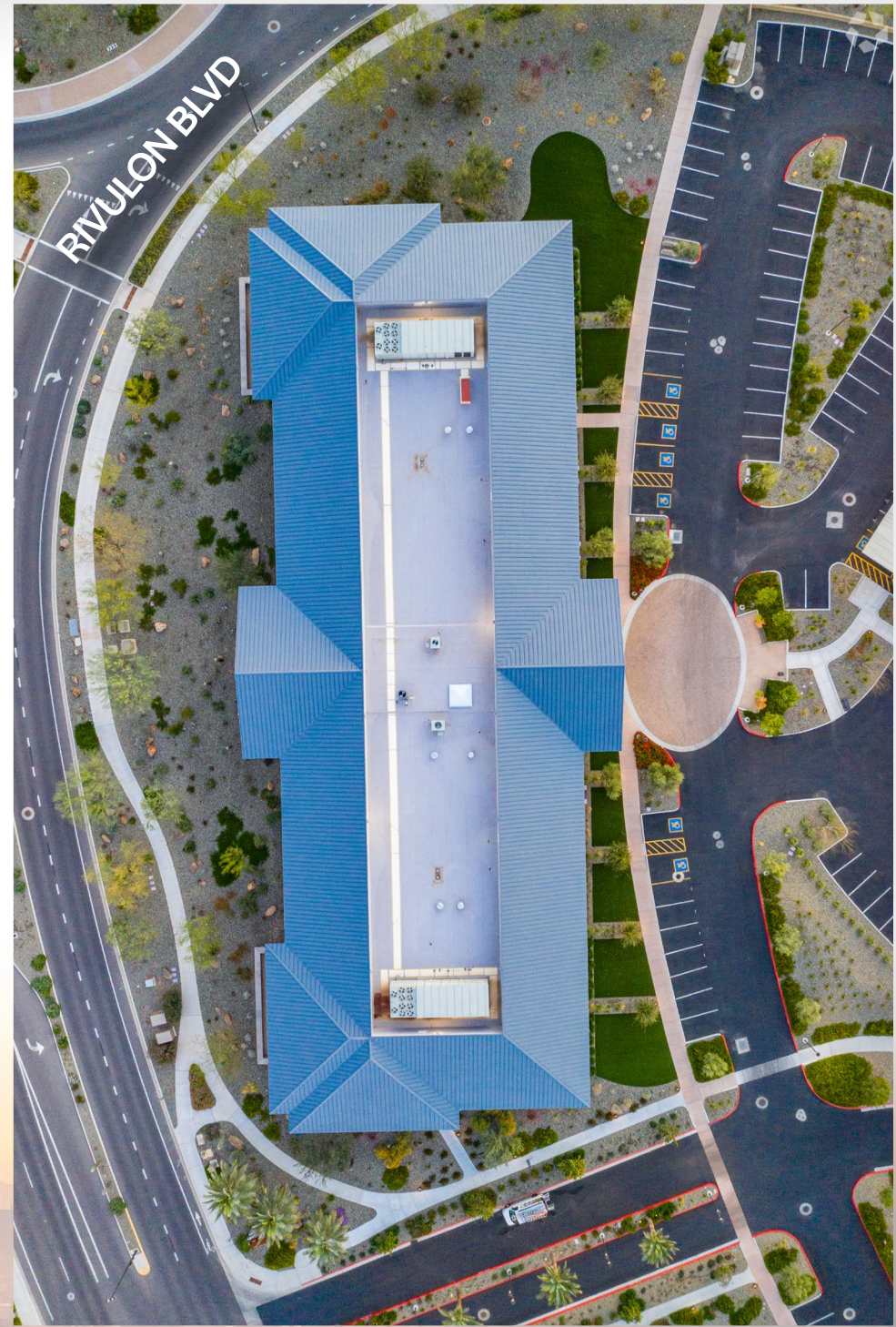
Partner/Designated Broker
602.909.8759
todd@citywidecre.com

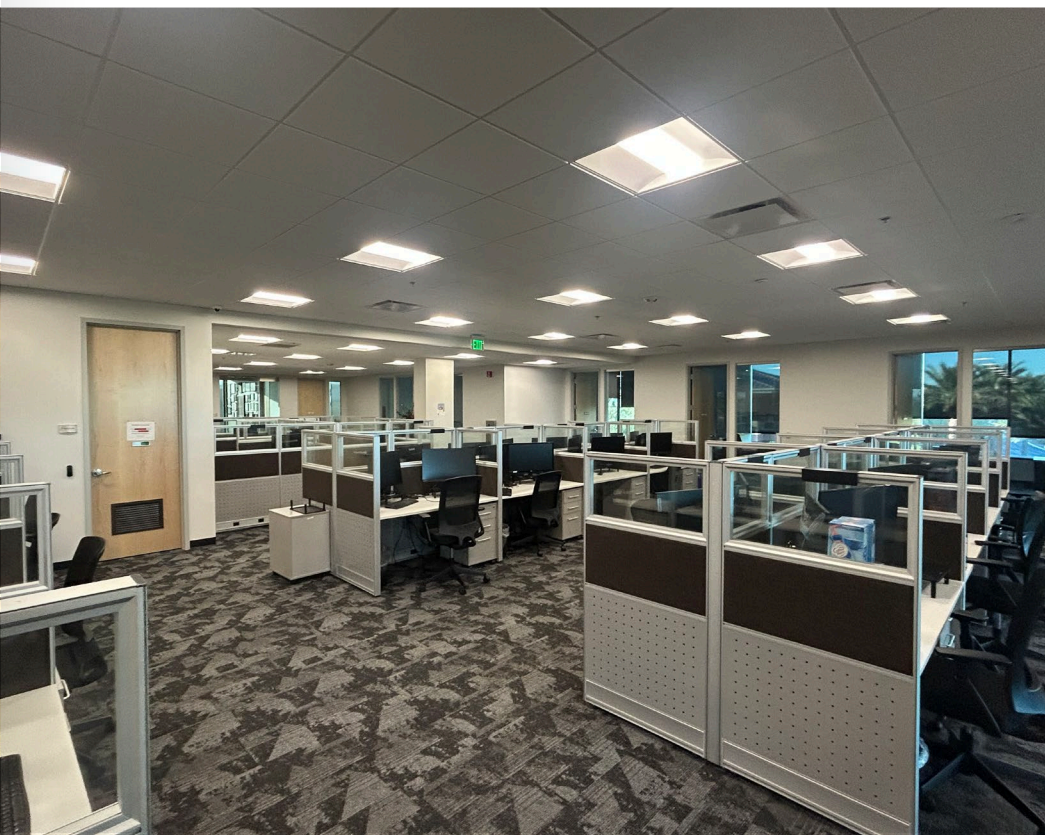
Chad Neppi

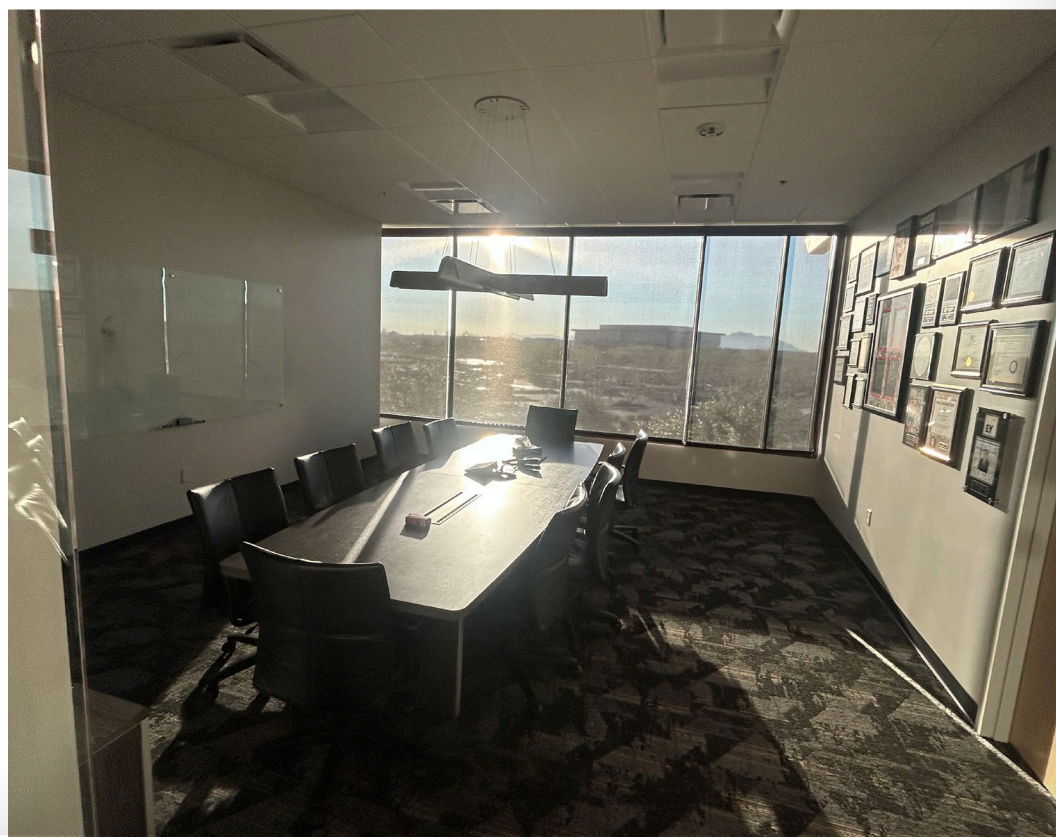
Senior Vice President
602.695.4909
cneppi@citywidecre.com

Vince Utucu

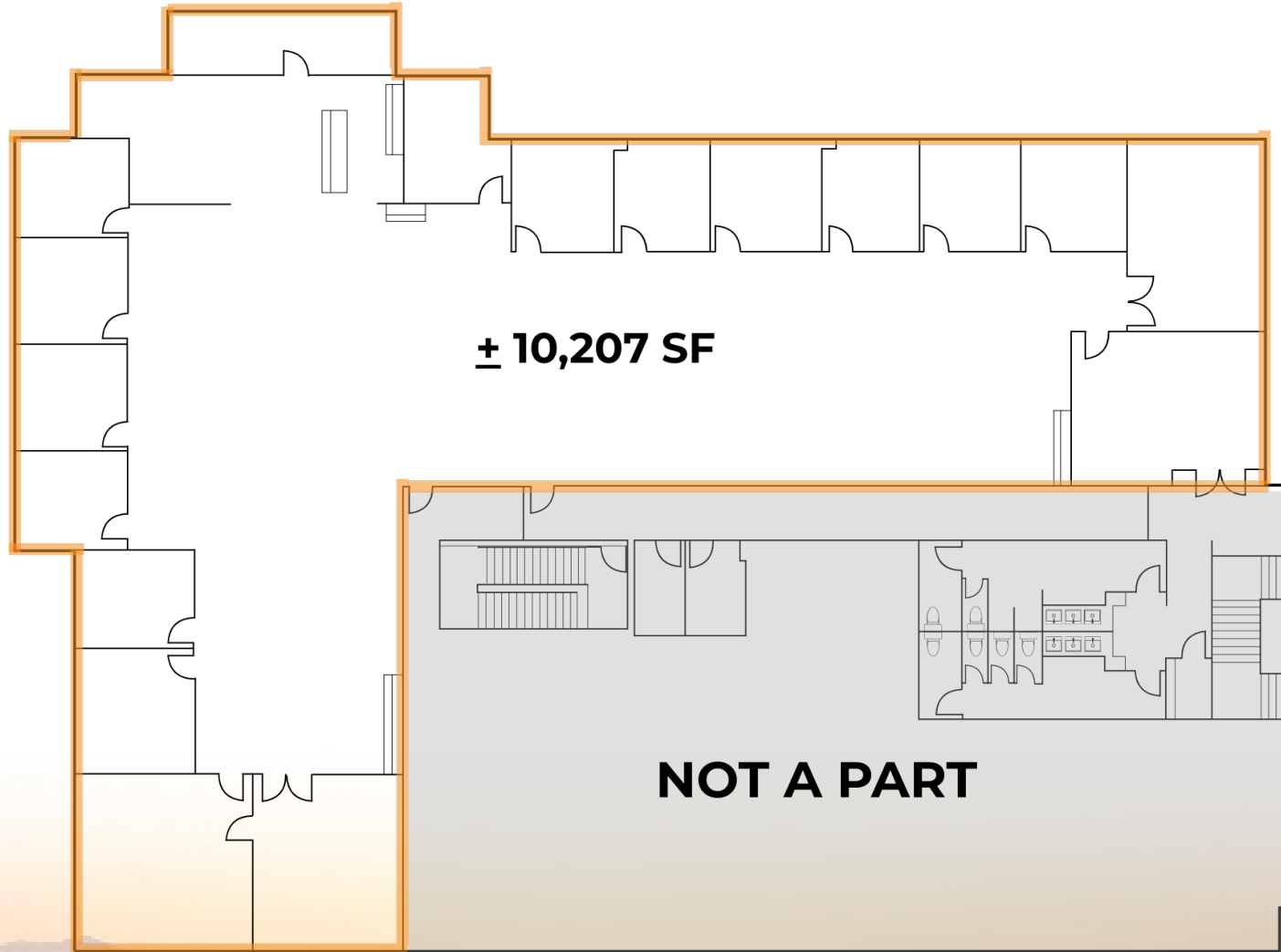
Sales & Leasing
773.807.6674
vince@citywidecre.com







FLOOR PLAN



Todd Hamilton
Partner/Designated Broker
602.909.8759
todd@citywidecre.com

Chad Neppi
Senior Vice President
602.695.4909
cneppi@citywidecre.com

Vince Utucu
Sales & Leasing
773.807.6674
vince@citywidecre.com