

EYDE DEVELOPMENT

RH BUSINESS PARK - STAR-BATT DRIVE ROCHESTER HILLS, MI 48309



FOR LEASE

BUILDING SQUARE FOOTAGE:

- Eight buildings with over 202,663 sf total

ADVANTAGES:

- High Demand Area
- Easy Access to M-59 and I-75

FEATURES/AMENITIES:

- 12' Overhead doors
- 16' high ceilings (bottom of beam), 17'-6" to deck
- On site Property Manager

STRATEGIC LOCATION:

- Strategically located on Crooks Road and M-59, just east of I-75.
- Close proximity to medical and educational facilities
- Close proximity to restaurants, lodging, gyms, grocery and retail

CONTACT

Eyde Development

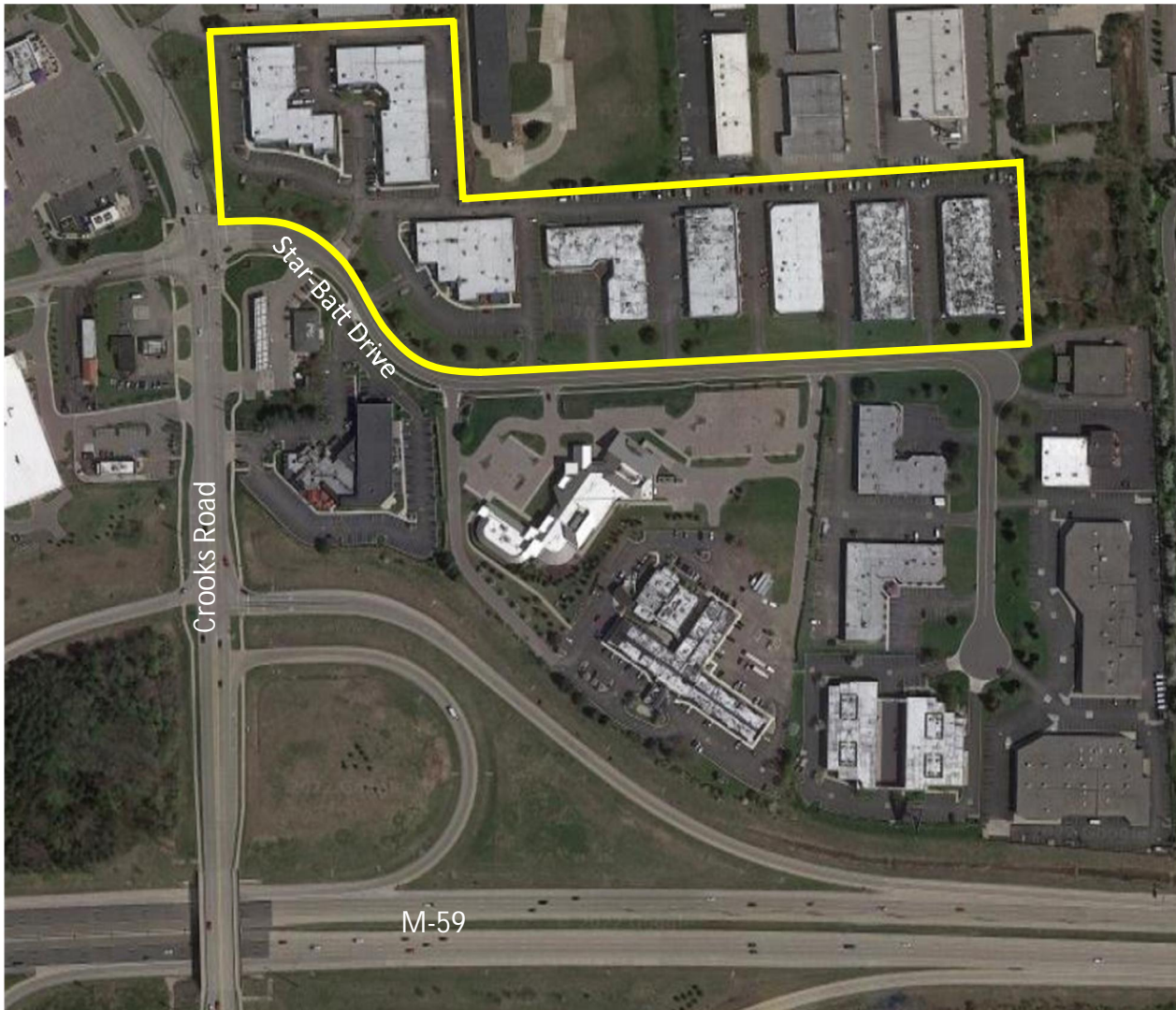
517-903-3933 | eyde.com



EYDE DEVELOPMENT

RH BUSINESS PARK - STAR-BATT DRIVE ROCHESTER HILLS, MI 48309

SITE PLAN



CONTACT

Eyde Development
517-903-3933 | eyde.com

| Eyde Development | 300 S. Washington Square #400 Lansing, MI 48933 |
| Phone: 517-903-3933 | Fax: 517-484-5695 | www.eyde.com |