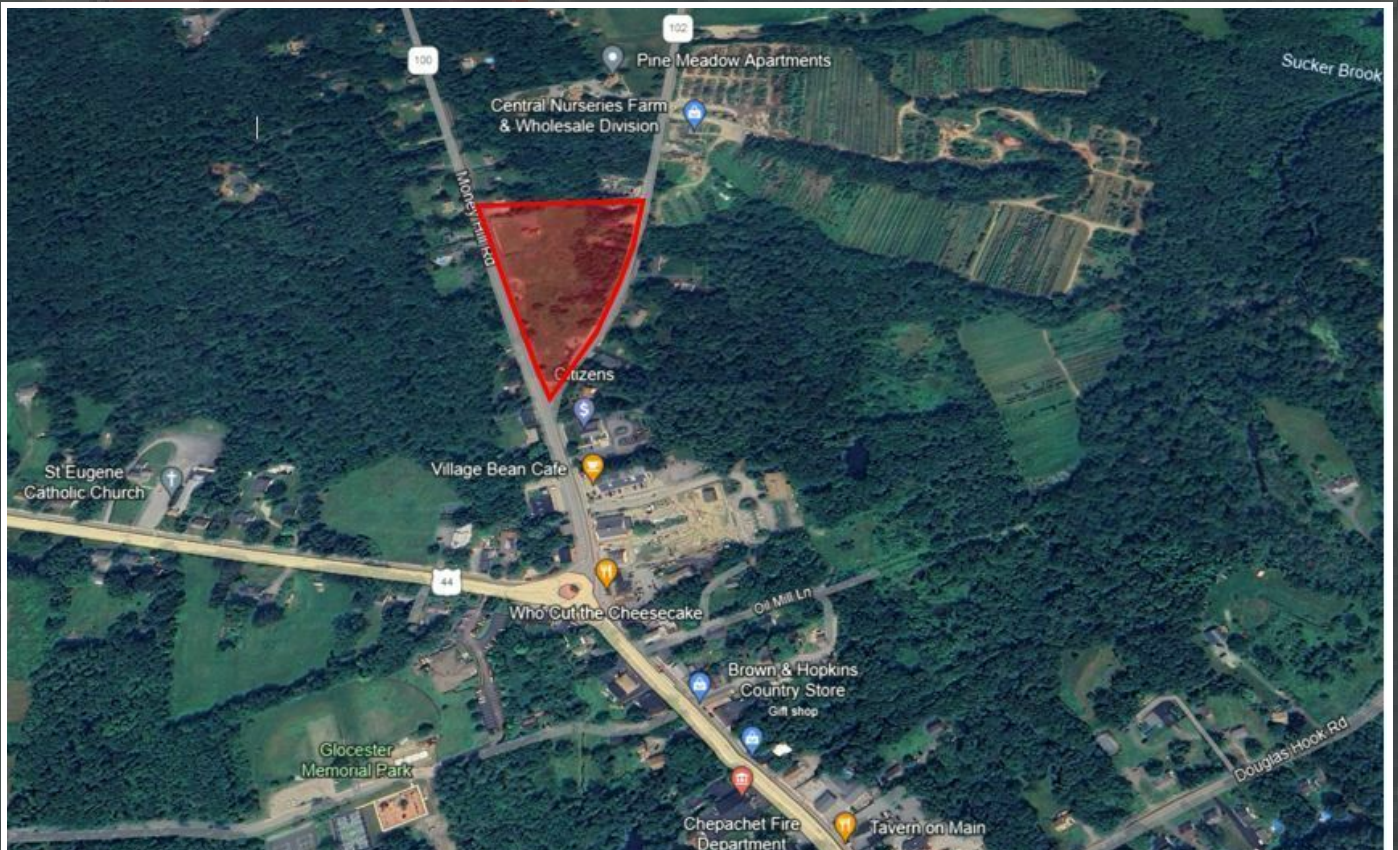
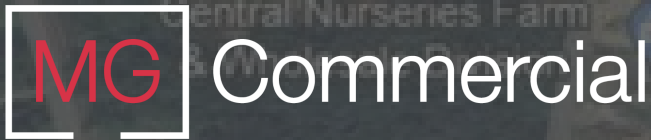


UP TO 4.8 AC SITE FOR SALE



# MONEY HILL ROAD

Glocester, RI 02814

**DAN FEINER**

Vice President  
401.751.3200 x3310  
dan@mgcommercial.com

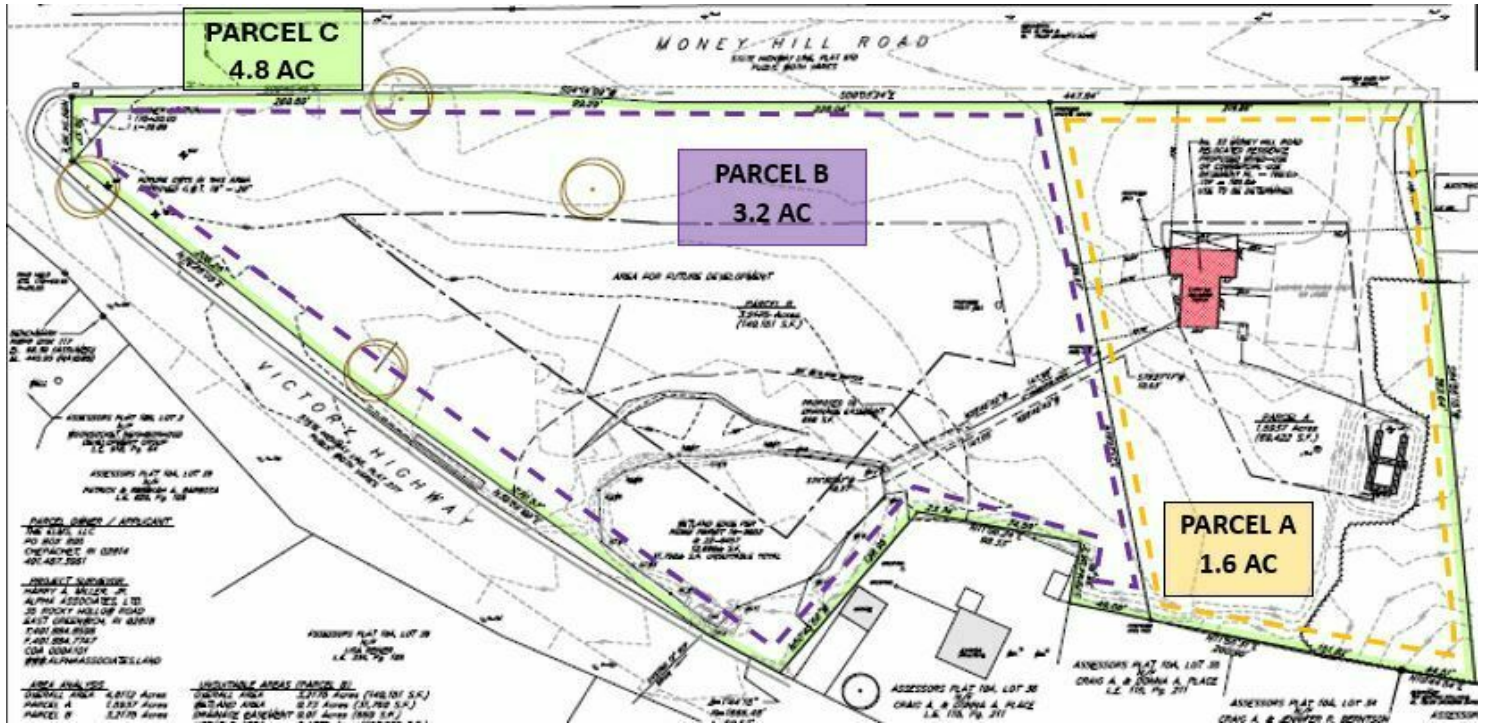
**MICHAEL GIUTTARI, SIOR**

President Emeritus  
401.751.3200 x3305  
mike@mgcommercial.com

**MG COMMERCIAL**

365 Eddy Street, Penthouse Suite  
Providence, RI 02903  
401.751.3200 | mgcommercial.com

# EXECUTIVE SUMMARY



## PROPERTY DESCRIPTION

The subject property offers various size options. The 3.2 acre flat parcel is perfect for retail or office development. This parcel has 578 feet of frontage along Money Hill Road (Route 100) and 624 feet of frontage along Victory Highway (Route 102). In addition, there is a 1.6 acre adjacent lot with a commercial building that can be utilized as mixed-use. The two lots together total 4.8 acres and can be sold separately or as one.

## PROPERTY HIGHLIGHTS

- Corner lot with tremendous visibility
- Located at the intersection of Route 100 and Route 102
- 3 size options: 3.2 acres, 1.6 acres or 4.8 acres
- 3.2 Acres - Plat 10A Lot 30 Parcel B
- 1.6 Acres - Plat 10A Lot 30 Parcel A
- 4.8 Acres - Plat 10A Lot 30 Parcel C
- Parcels can be sold together or separately

## LOCATION DESCRIPTION

This corner lot is strategically located on Money Hill Road at the intersection of Routes 100 and 102 and is just 700 feet from Route 44. It is situated in the Village of Chepachet within the town of Gloucester. It has tremendous visibility and is a prime location in northern RI. (Plat 10A; Lot 30 - Parcels A & B)

## OFFERING SUMMARY

Sale Price:	Parcel B	\$1,200,000
	Parcel A	\$450,000
	Parcel C	TBD

DEMOGRAPHICS	3 MILES	5 MILES	7 MILES
Total Population	11,009	21,606	39,448
Average HH Income	\$120,522	\$123,172	\$130,506

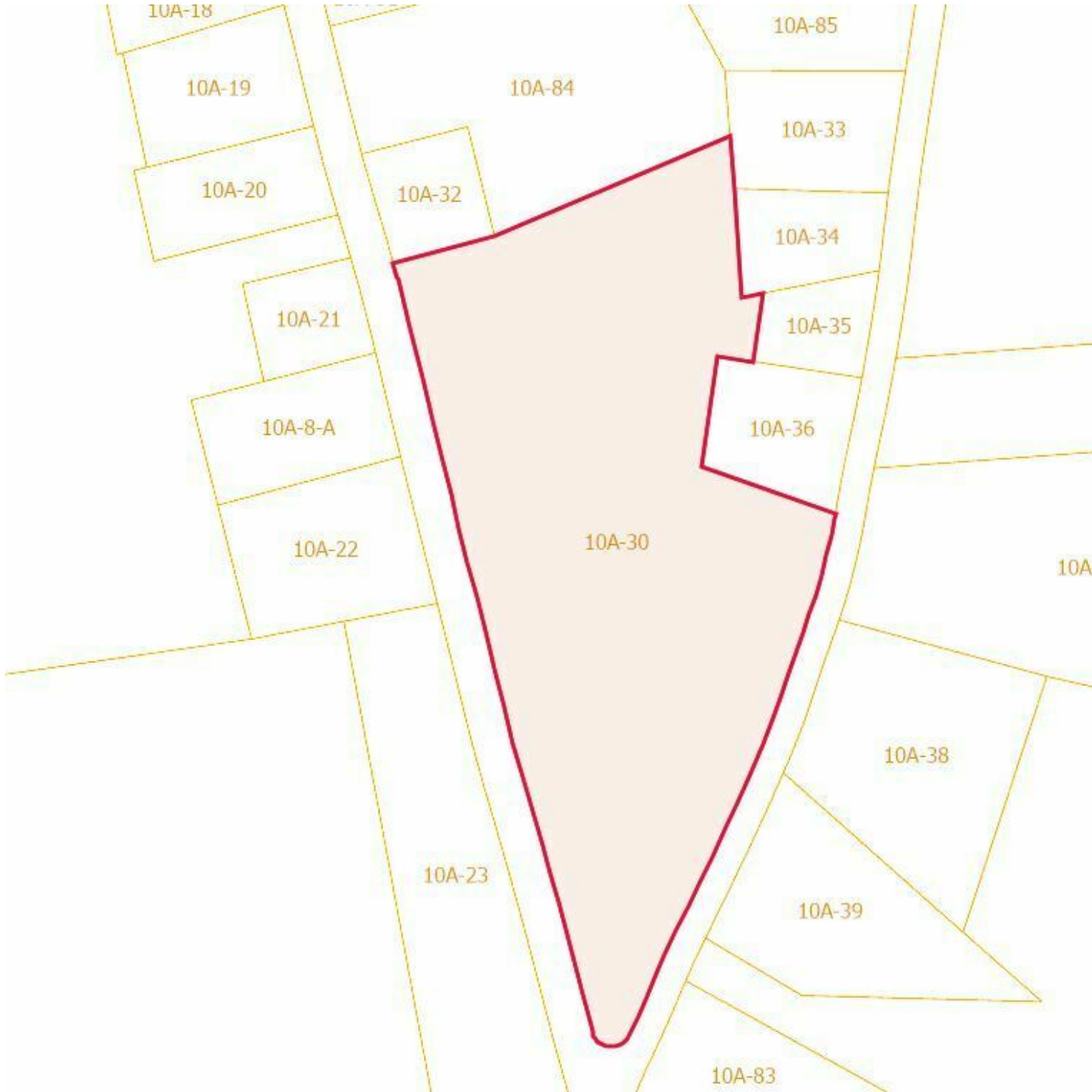
DAN FEINER  
Vice President  
401.751.3200 x3310  
dan@mgcommercial.com

MICHAEL GIUTTARI, SIOR  
President Emeritus  
401.751.3200 x3305  
mike@mgcommercial.com

365 Eddy Street, Penthouse Suite  
Providence, RI 02903  
mgcommercial.com



# PLAT MAP



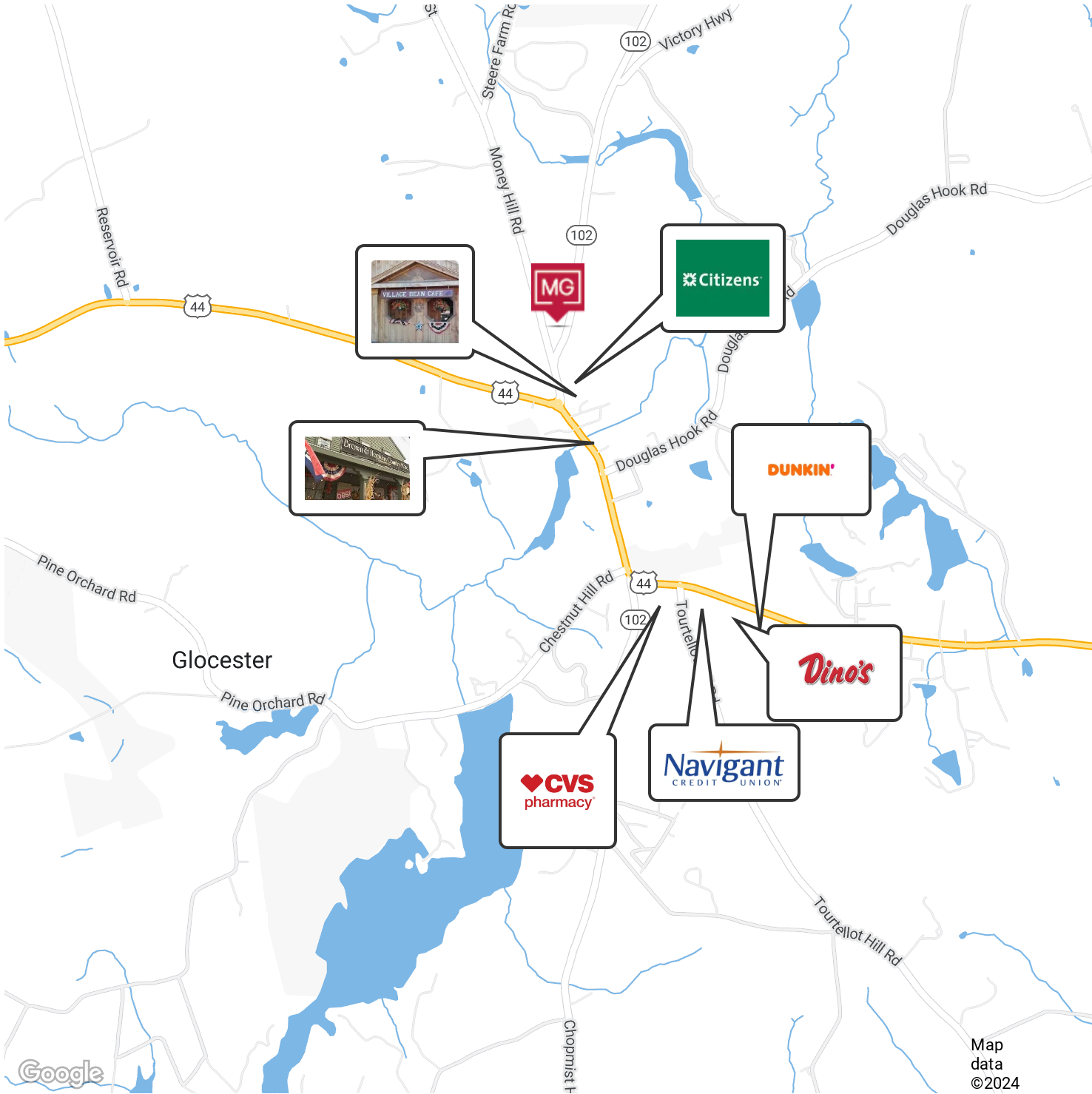
**DAN FEINER**  
Vice President  
401.751.3200 x3310  
dan@mgcommercial.com

**MICHAEL GIUTTARI, SIOR**  
President Emeritus  
401.751.3200 x3305  
mike@mgcommercial.com

365 Eddy Street, Penthouse Suite  
Providence, RI 02903  
mgcommercial.com



# RETAILER MAP



Map data ©2024

**DAN FEINER**  
 Vice President  
 401.751.3200 x3310  
 dan@mgcommercial.com

**MICHAEL GIUTTARI, SIOR**  
 President Emeritus  
 401.751.3200 x3305  
 mike@mgcommercial.com

365 Eddy Street, Penthouse Suite  
 Providence, RI 02903  
 mgcommercial.com



This information has been secured from sources we believe to be reliable, but we make no representation or warranties, expressed or implied, as to the accuracy of the information. All references to age, sq. footage, income, and expenses are approximate. Buyers should conduct their own independent investigations and rely only on those results.