

OFFICE SPACE FOR LEASE

Keller, TX



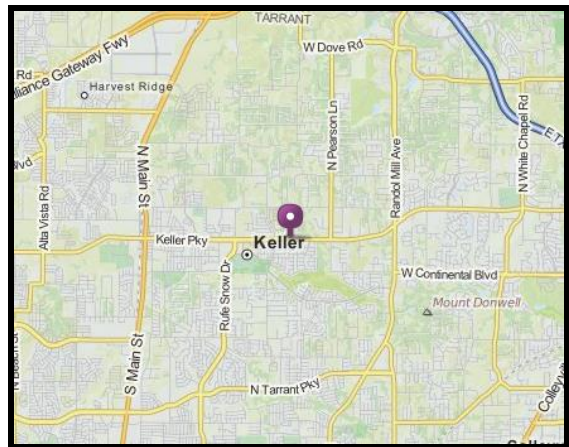
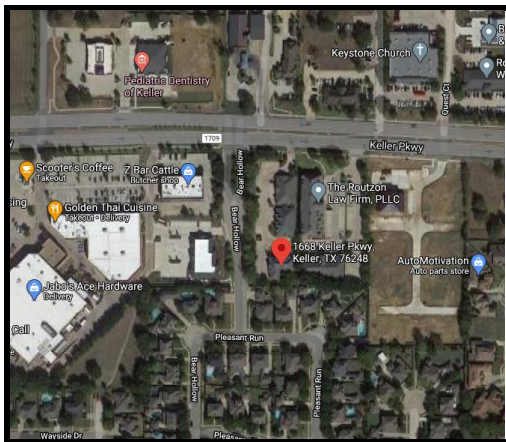
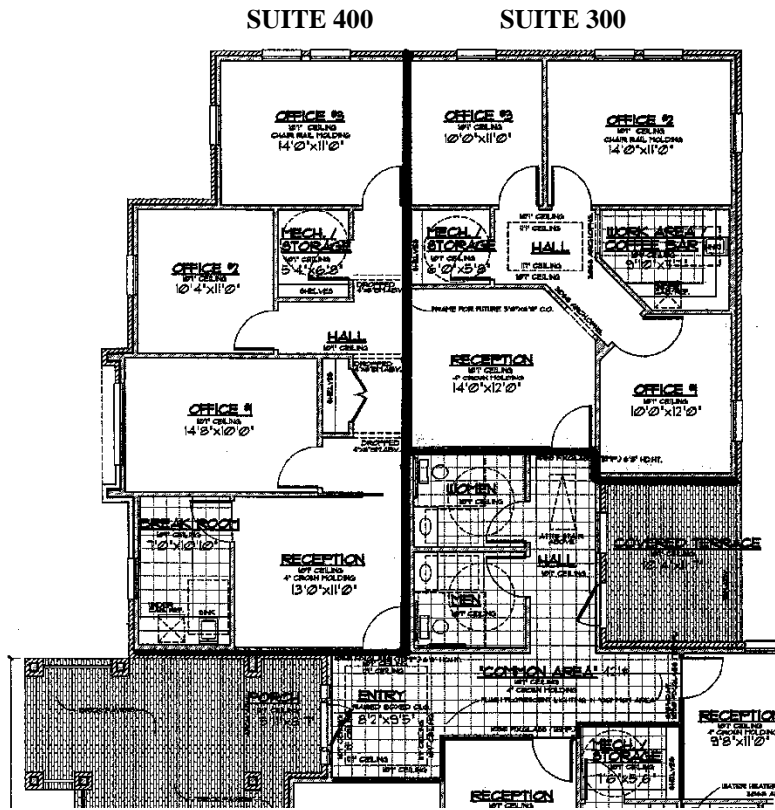
- Location:** 1668 Keller Parkway (FM 1709), Suite 300.
- Size:** Suite 300: 882 SF – Recept., 3 Offices, Break Room + Stor.
Suite 400: 1,017 SF – Recept., 3 Offices, Break Room + Stor.
- Floor Plan:** Reception – 3 Offices – Break Area - Storage.
- Rent:** \$17.00 per square-foot + NNN's.
- Signage:** Monument signage on FM 1709!
- Available:** Now!

For further information contact: Rich Muller



Vintage Realty
2980 Long Prairie Rd., Suite D
Flower Mound, TX 75022
972/355-0669 or Fax 972/355-5477
E-mail: Rich@VintageRealty.net or www.VintageRealty.net

This information is believed to be accurate, but no representation or warranty, express or implied, as to its accuracy or completeness is made by any party. The presentation of this property is submitted subject to errors, omissions, change of price or prior sale or lease or withdrawal without notice.



This information is believed to be accurate, but no representation or warranty, express or implied, as to its accuracy or completeness is made by any party. The presentation of this property is submitted subject to errors, omissions, change of price or prior sale or lease or withdrawal without notice.