

SUMMARY

AERIAL

RETAIL COMPETITION

SITE PLAN

PHOTOS

DEMOGRAPHICS

FOR LEASE

PROPERTY OVERVIEW

Super Target anchored retail center! Strong population and exponential retail growth! Shops on Schillinger is a strategically located shadow center within the area's epicenter of retail, paired with one of the world's dominant retailers and possibly the best anchor tenant in the industry, Super Target. The property is a 38,850 square foot retail center located on a 6.5 acre lot that shares parking and access with Super Target. Built in 2003 and located on Schillinger Road off of Airport Boulevard, the shopping center boasts a strong tenant mix and has had historically high occupancy.

EXISTING CO-TENANTS

1 Liquor, Sally Beauty Supply, Crafty Crab Restaurant, Dollar Tree, Great American Cookies & Marble Slab Creamery, Vaping Goat, Sport Clips, Venness Spa Nails, GLAM Threading & Lashes, and Check n' Go

AVAILABLE

- B-2: 1,200 ± SF
- B-6: 1,750 ± SF
- B-7: 1,750 ± SF
- B-8: 4,800 ± SF

LEASE RATE

- \$15.00 PSF NNN

PROPERTY DETAILS

- GLA: 38,850 ± SF
- Lot: 6.5 ± AC
- Built: 2003
- Parking: 223

TRAFFIC COUNTS (ADT 2022)

- On Schillinger Road, south of site: 40,336
- On Airport Boulevard, east of site: 28,194

MAJOR RETAILERS WITHIN ONE BLOCK



SUMMARY

AERIAL

RETAIL COMPETITION

SITE PLAN

PHOTOS

DEMOGRAPHICS



*Data provided by Placer.ai (2022 Stats)

SUMMARY

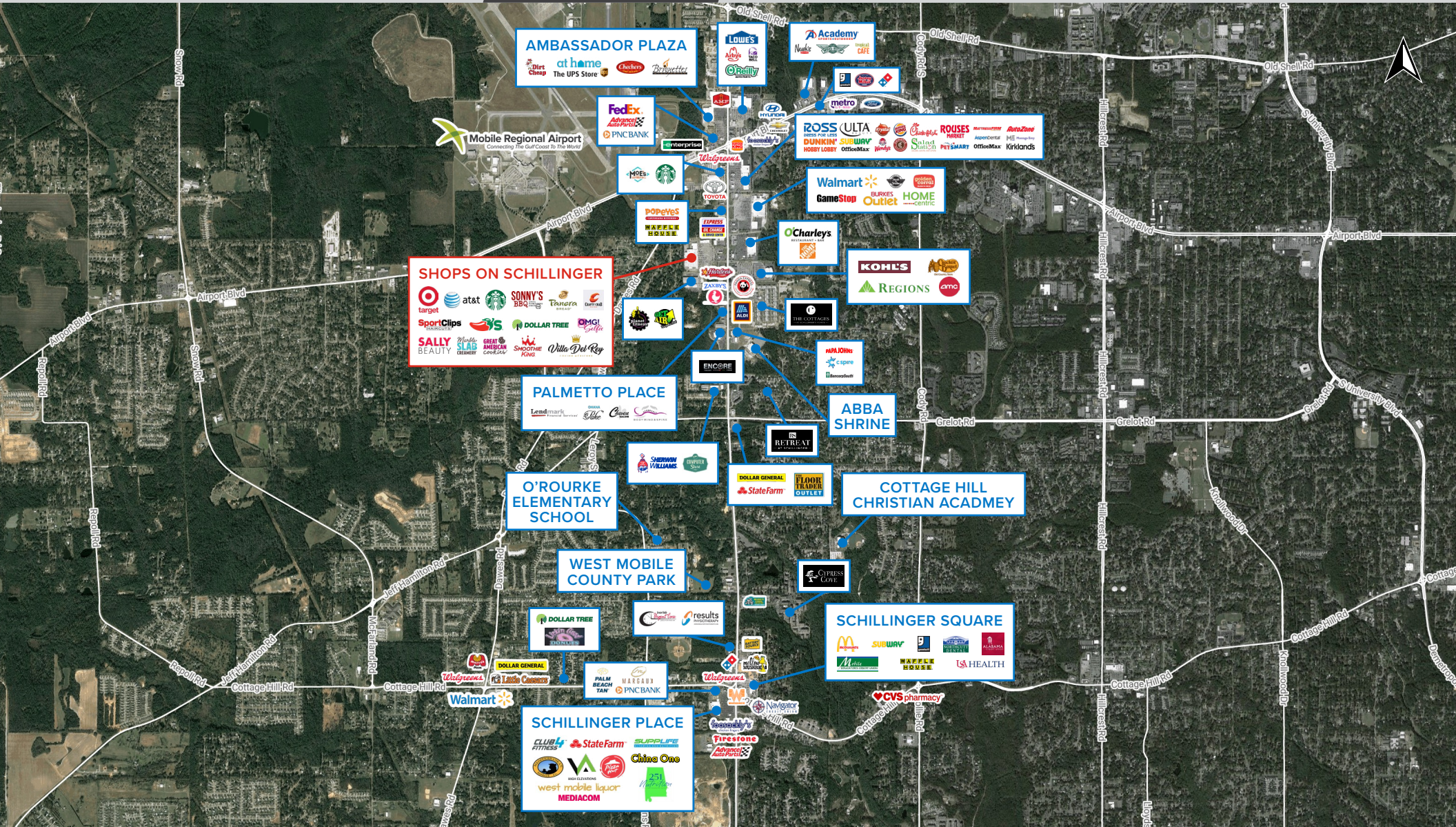
AERIAL

RETAIL
COMPETITION

SITE PLAN

PHOTOS

DEMOGRAPHICS



SUMMARY

AERIAL

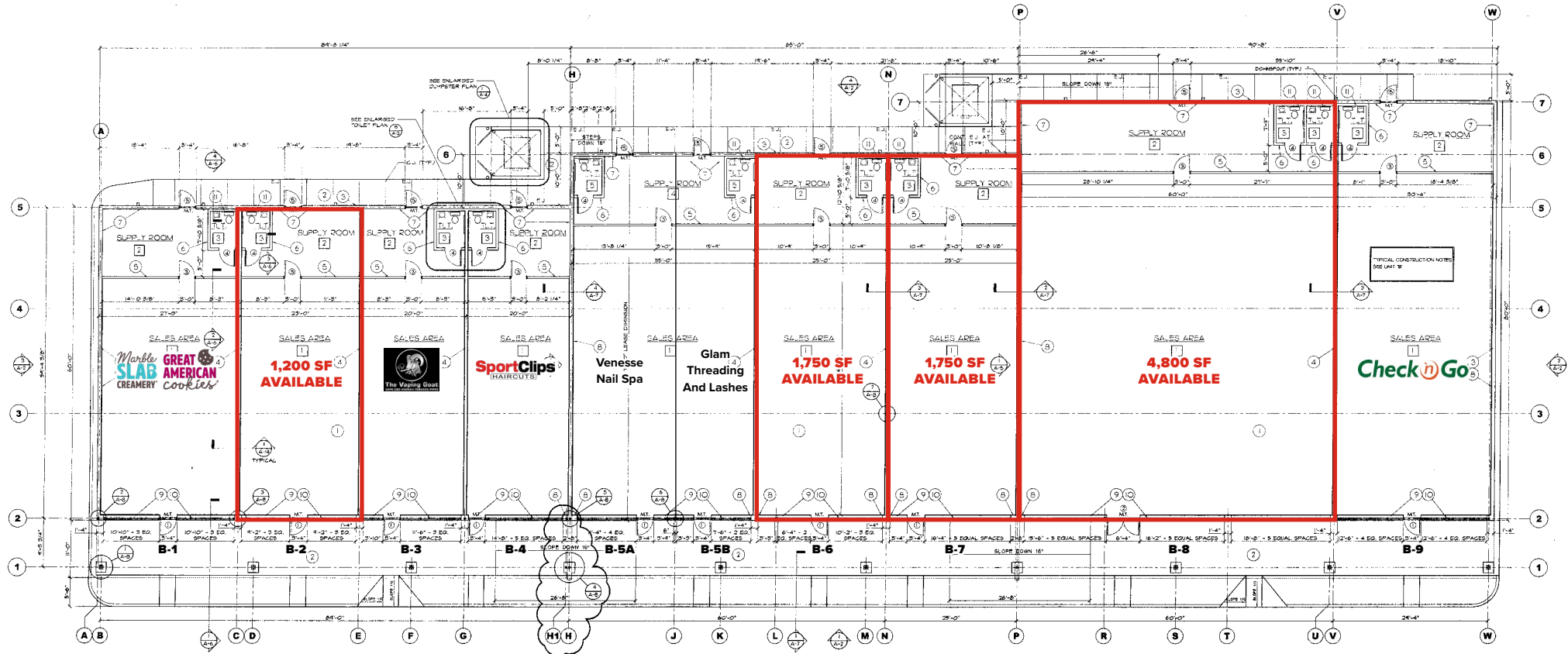
RETAIL
COMPETITION

SITE PLAN

PHOTOS

DEMOGRAPHICS

Click image to view Suite B-8 layout



SUMMARY

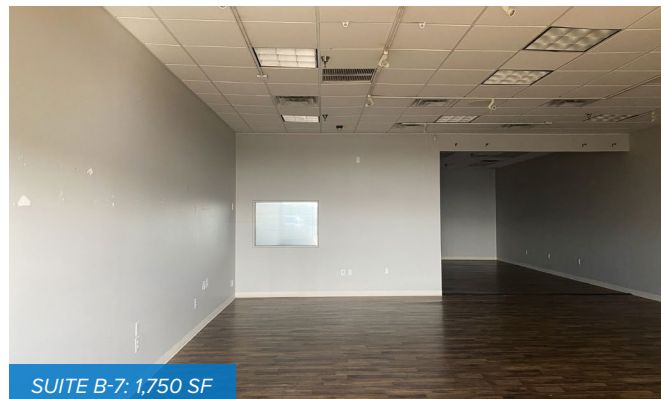
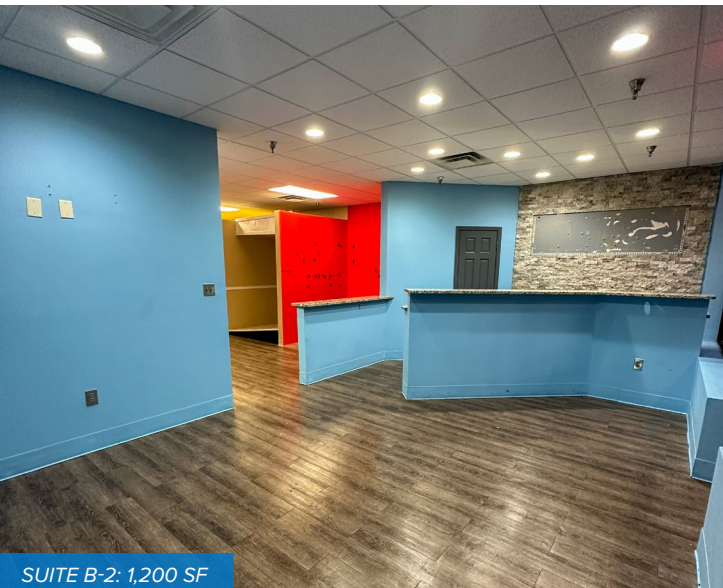
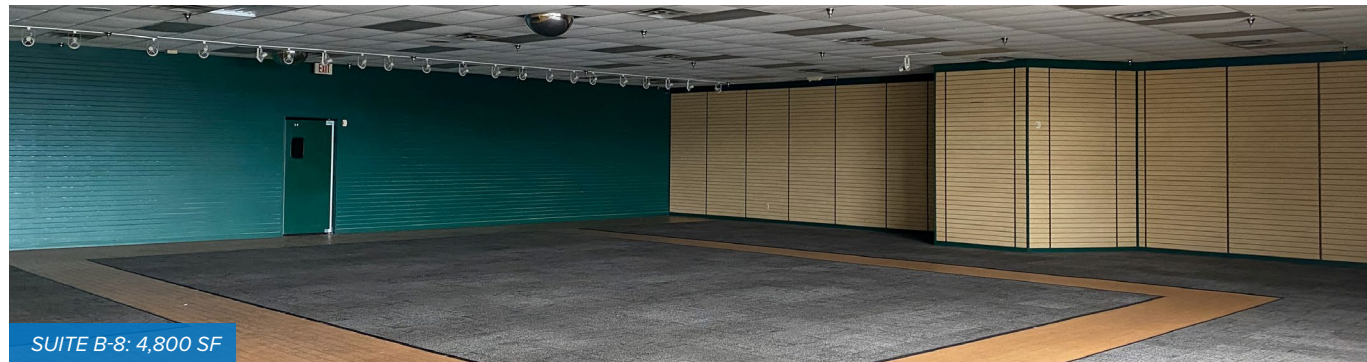
AERIAL

RETAIL COMPETITION

SITE PLAN

PHOTOS

DEMOGRAPHICS



SUMMARY

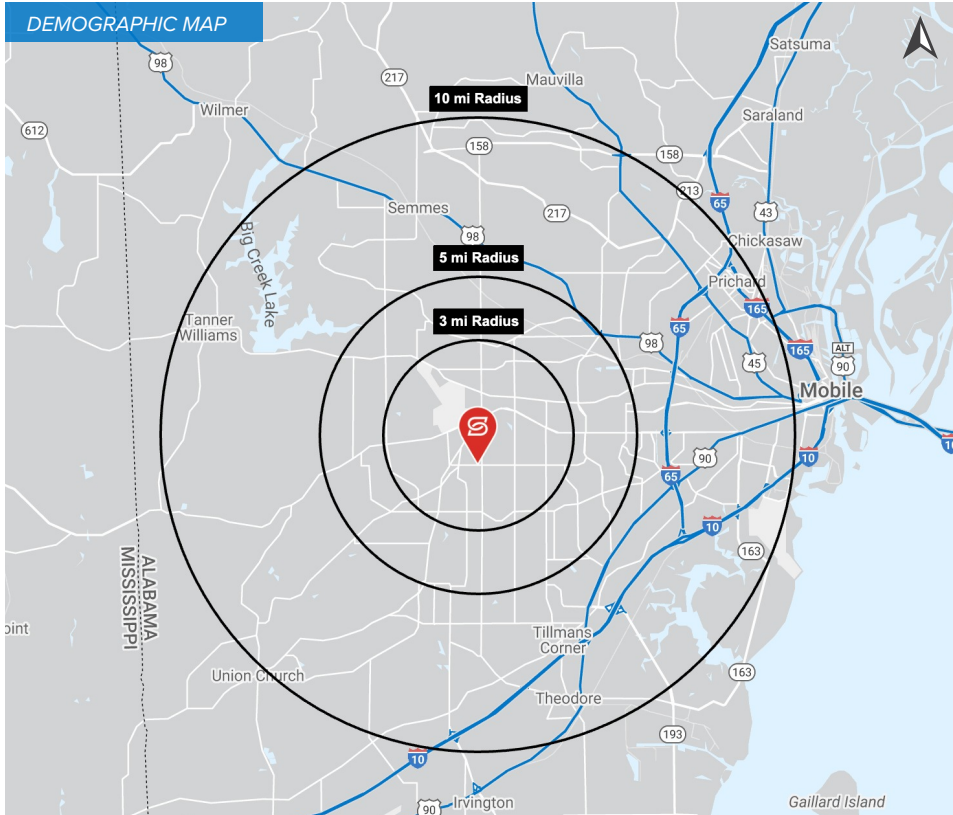
AERIAL

RETAIL COMPETITION

SITE PLAN

PHOTOS

DEMOGRAPHICS



2023 DEMOGRAPHICS

3 MILE

5 MILE

10 MILE



48,293

120,268

293,130

3 MILE

5 MILE

10 MILE



\$79,986

\$92,808

\$82,443

3 MILE

5 MILE

10 MILE



36,277

75,045

220,199