



# FOR LEASE



ATLANTIC  
PROPERTIES

704-708 Washington Street, Pembroke, MA

*For More Information:*

**BEN STOUT, CCIM**

*Managing Partner*

*bstout@atlanticproperties.com*

*781-248-6774*

**ROBERT PHINNEY**

*Vice President*

*rphinney@atlanticproperties.com*

*781-424-3099*

# 704-708 Washington Street



## PROPERTY DESCRIPTION

704-708 Washington Street is an industrial warehouse/distribution campus located on Rt. 53. The property is occupied by local businesses and strong credit companies such as Dynamic, a company focused on space simulation, thin film, and custom vacuum systems.

## PROPERTY HIGHLIGHTS

- On-site management
- Various floor plans available
- Ample parking on-site
- Dry storage space available

## OFFERING SUMMARY

- Building 704 C- 28,000 SF
- Floor 1: 14,000 SF
- Floor 2: 14,000 SF
- Building 704 B- 3,200 SF
- Asking \$12.00/SF plus NNN
- Drive-in doors & loading docks
- 18 foot ceiling heights

## PROPERTY FACTS

- 5-building campus located on Rt. 53
- Mix of warehouse/office/dry storage space
- Ample power in both available buildings
- Signage along Washington Street

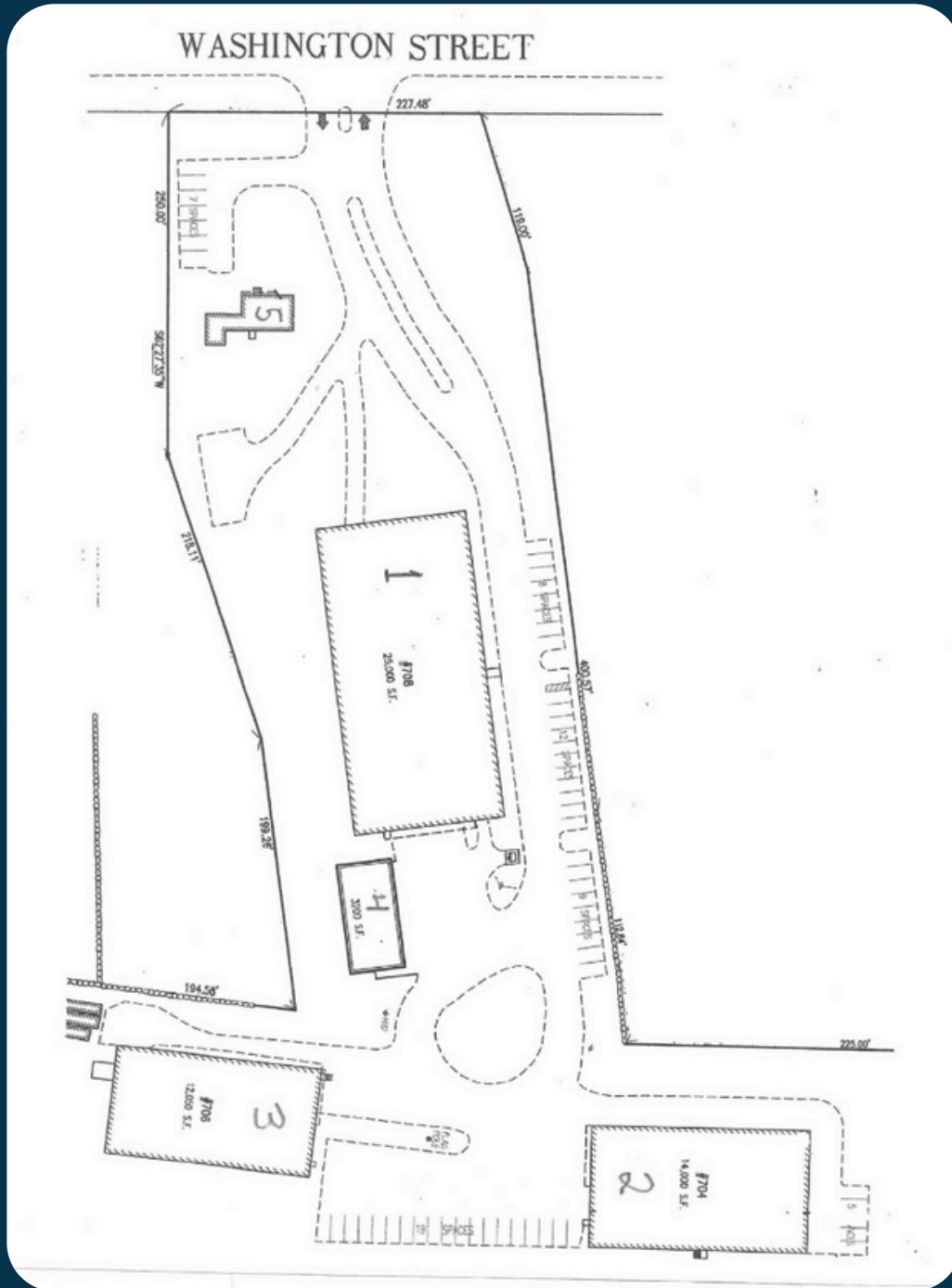
AVAILABLE SPACE

# 704-708 Washington Street



[www.atlanticproperties.com](http://www.atlanticproperties.com)

# Buildings 2 & 4 Available



# 704-708 Washington Street

---



704-708 Washington Street, Pembroke, MA

ADDITIONAL PHOTOS

# 704-708 Washington Street

