

FOR LEASE

525 W. LAMBERT ROAD

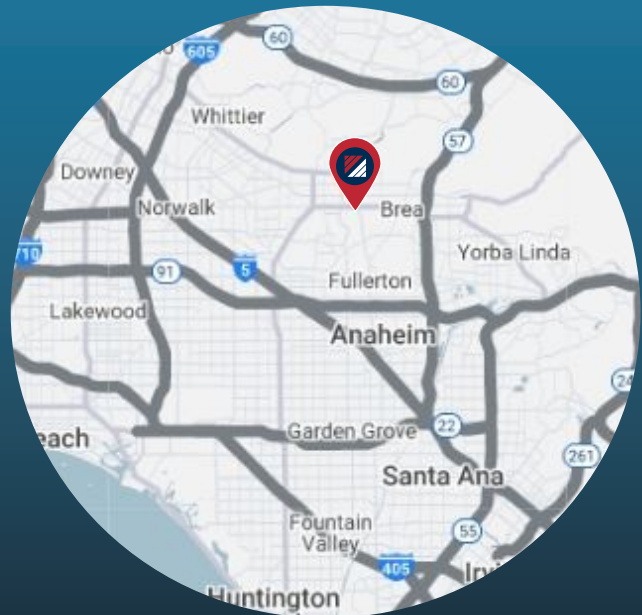
BREA | CA



10,500 SQUARE FOOT INDUSTRIAL BUILDING

PROPERTY HIGHLIGHTS:

- ±10,500 Square Foot Industrial Building
- ±1,260 Square Feet of Office/Showroom
- Fire Sprinklered
- Three (3) Ground Level Doors (12'x12')
- 600 Amps 120/208V (verify)
- 16' Minimum Clearance Height
- Natural Gas
- Bonus Mezzanine
- Four (4) Restrooms
- Shop Sink
- Monument Signage on Lambert Road
- Spray Booth (Removable)
- Immediate 57 Freeway Access



FOR MORE INFORMATION PLEASE CONTACT:

DENNIS HOLT | EXEC. V.P.
P: 949.242.1714 | M: 714.423.0169
DHOLT@DAUMCOMMERCIAL.COM
CADRE #01948978

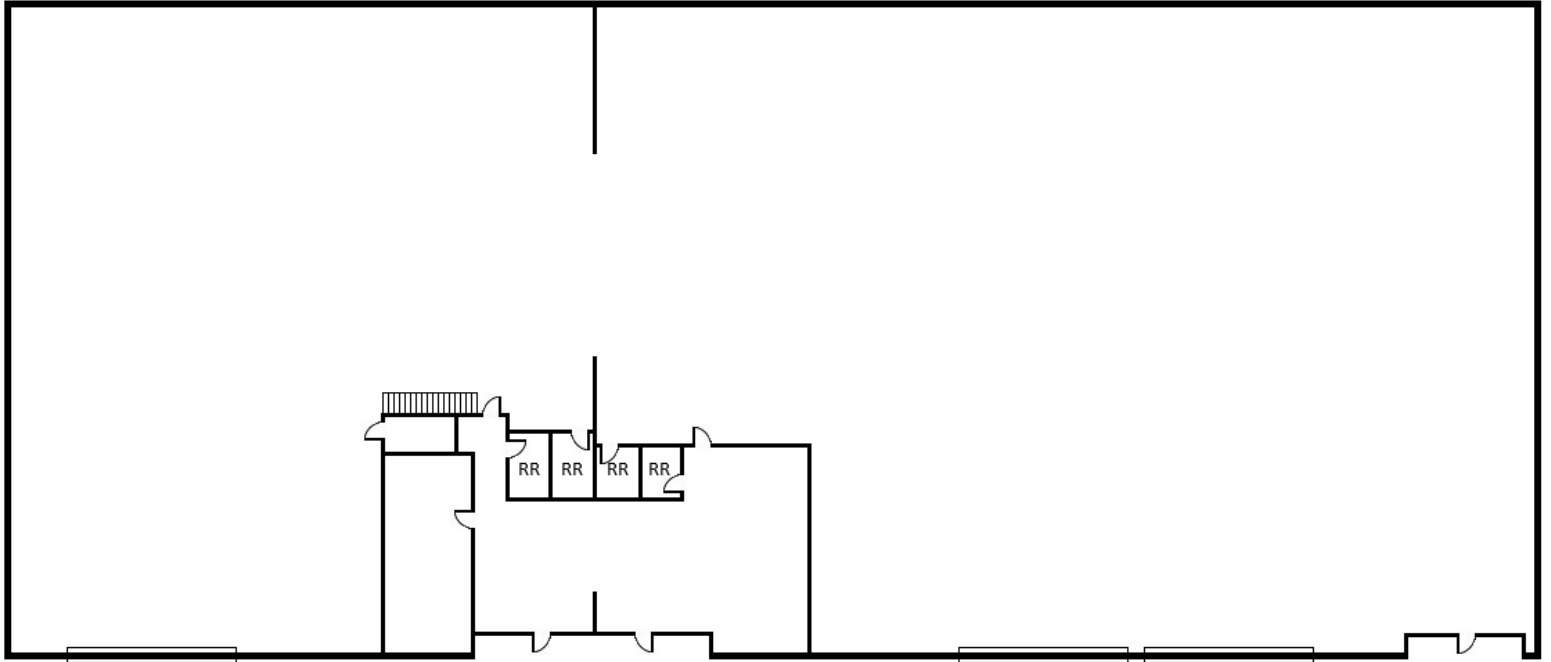
Although all information is furnished regarding for sale, rental or financing is from sources deemed reliable, such information has not been verified and no express representation is made nor is any to be implied as to the accuracy thereof, and it is submitted subject to errors, omissions, changes of price, rental or other conditions, prior sale, lease or financing, or withdrawal without notice. D/AQ Corp. # 01129558

DAUM COMMERCIAL REAL ESTATE SERVICES | WWW.DAUMCOMMERCIAL.COM

DAUM
COMMERCIAL REAL ESTATE SERVICES

FOR LEASE

525 W. LAMBERT ROAD | BREA | CA



Although all information is furnished regarding for sale, rental or financing is from sources deemed reliable, such information has not been verified and no express representation is made nor is any to be implied as to the accuracy thereof, and it is submitted subject to errors, omissions, changes of price, rental or other conditions, prior sale, lease or financing, or withdrawal without notice. D/AQ Corp. # 01129558

DAUM COMMERCIAL REAL ESTATE SERVICES | WWW.DAUMCOMMERCIAL.COM

DAUM
COMMERCIAL REAL ESTATE SERVICES