

361 CENTRAL AVE, JERSEY CITY, NJ



3-Floor Storefront in Jersey City Shopping Corridor



For Sale or Lease



SPACE AVAILABLE

- **TOTAL SPACE:** 9,800 SF
 - 1st floor** 4,400 SF
 - 2nd floor** 2,600 SF
 - Basement** 2,800 SF
- **FRONTAGE:** 48 feet
- **POSSESSION:** Immediate
- **ASKING PRICE:** Upon Request

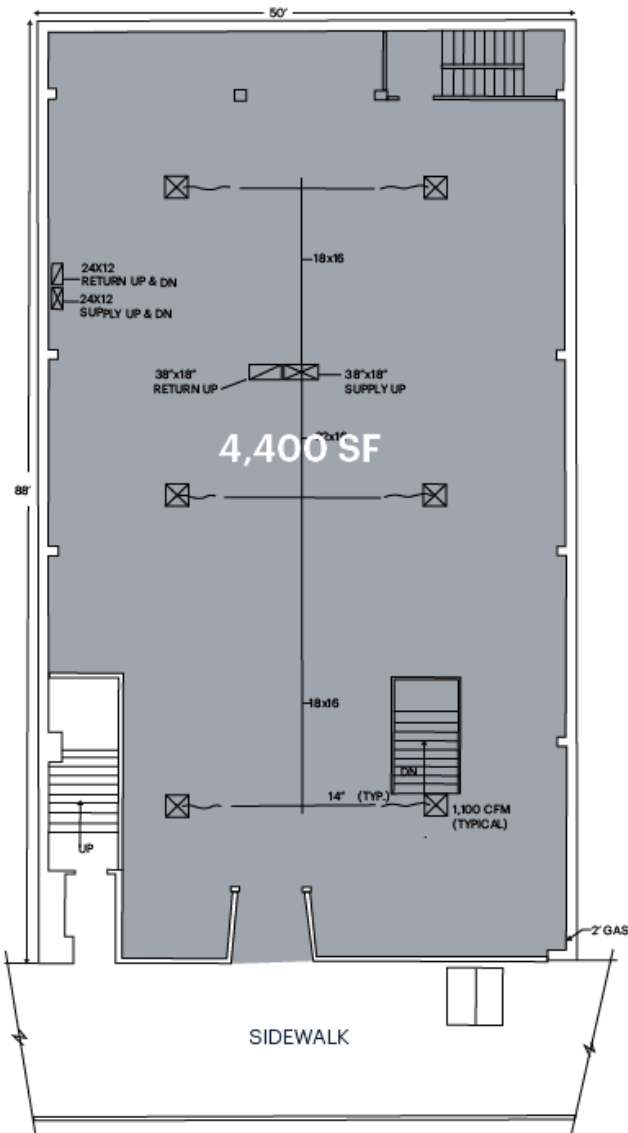
COMMENTS

This 9,800-square-foot, 3-floor storefront retail space is in the heart of the Jersey City Heights Shopping Corridor on Central Avenue. Near major transportation including NJ Transit Bus, the 9th Street Path Station, and is just minutes from Hoboken, Journal Square, and Downtown Jersey City. Major highways include Route 1&9, Route 280, NJ Turnpike.

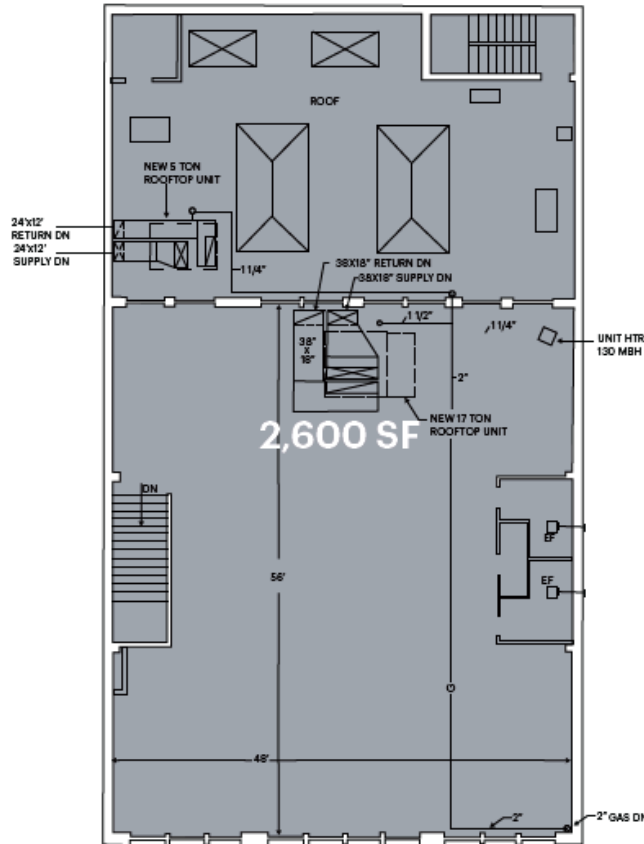
	1 MILE	3 MILE	5 MILE
Population	105,025	576,008	1,515,822
Avg Household Income	\$124,748	\$136,029	\$138,960
Traffic	7,791		



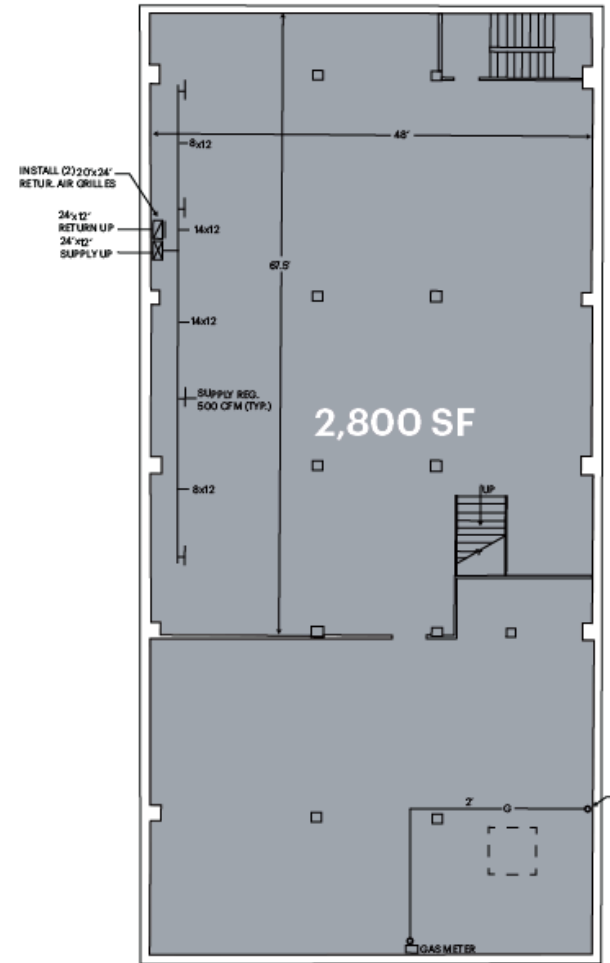
FIRST FLOOR



SECOND FLOOR



BASEMENT



SCALE: 1/8" = 1'-0"