

FOR SALE

WAREHOUSE

Call for Pricing

**817 East Main Street
Easley, South Carolina 29640**



Property Highlights

Investment Opportunity
Property Consist of +/- 45,000 sf having;
Multiple Tenants spaces - 5,000 to 14,000 sf
Shared Covered Dock Area
15' to 17' Ceiling Heights
Warehouse / Office / Retail
Sprinkled (Wet)
Space Available for Lease
Ample Parking
Multiple points of Ingress/Egress
Pickens County TMS# 5029-14-24-8961
Easley City Limits
Owner Allowances



Bradford Johnson, CCIM
RE/MAX Results - Commercial
400 N. McBee Ave, Stet 112
Greenville, SC 29601
864.295.9988 Direct
864.230.1884 Cellular
Brad@bradjohnson-ccim.net

RE/MAX Results
400 N. McBee Ave, Ste 112
Greenville, SC 29601
864-295-9988



All information deemed to be reliable, but not guaranteed. It is your responsibility to confirm any and all information.

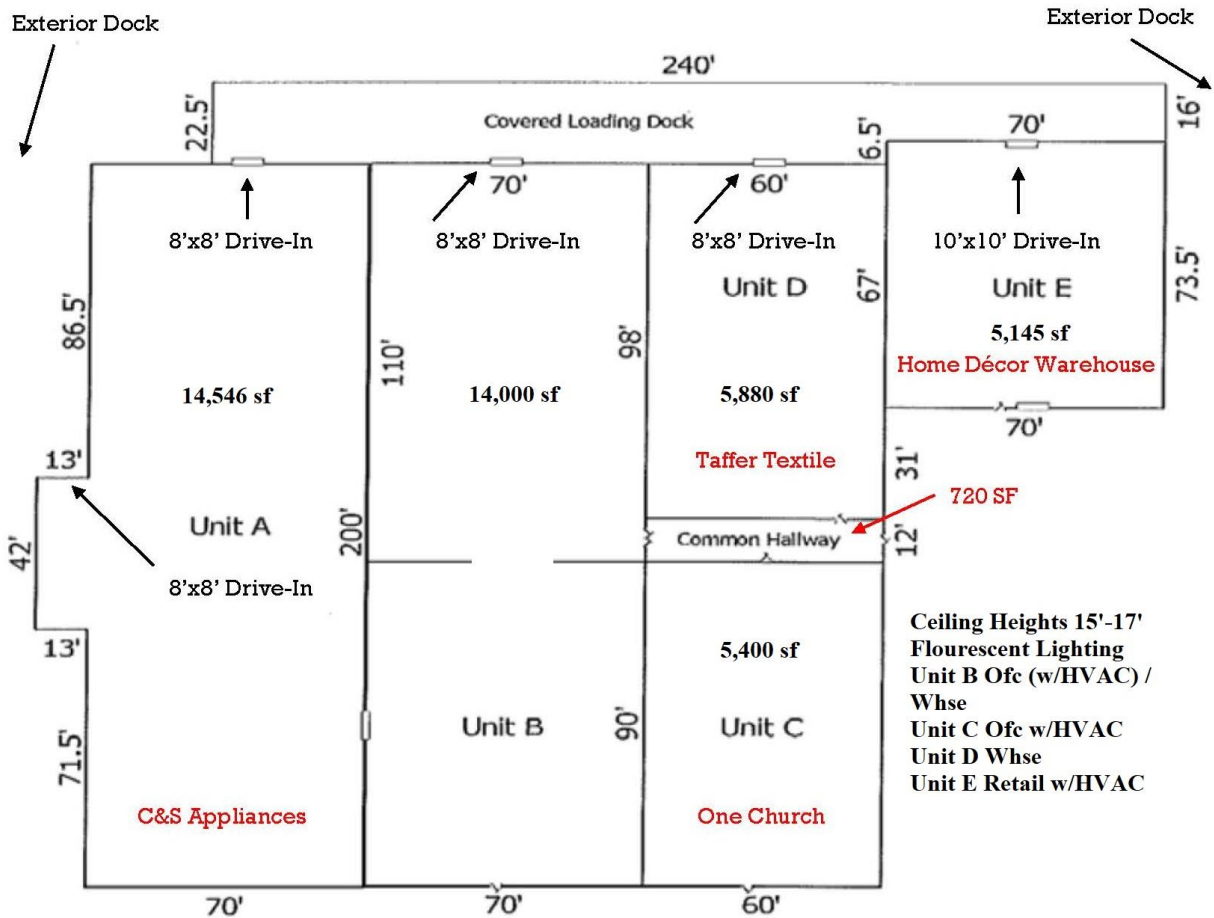
**A Better Way in
Commercial Real Estate**

FOR SALE

WAREHOUSE

Call for Pricing

**817 East Main Street
Easley, South Carolina 29640**



Bradford Johnson, CCIM
RE/MAX Results - Commercial
400 N. McBee Ave, Ste 112
Greenville, SC 29601
864.295.9988 Direct
864.230.1884 Cellular
Brad@bradjohnson-ccim.net

RE/MAX Results
400 N. McBee Ave, Ste 112
Greenville, SC 29601
864-295-9988



**A Better Way in
Commercial Real Estate**

All information deemed to be reliable, but not guaranteed. It is your responsibility to confirm any and all information.