

**\$9,200,000**

**SALE OFFERING**



**Heavy power: 4,000 AMPS**

**CLICK HERE FOR VIDEO TOUR**

**19939 SW CIPOLE RD**

SHERWOOD, OR 97140

**Large Land Component**

For more information or a property tour, please contact:

**NICK CHESSAR**

503.225.8469

NickC@norris-stevens.com

**SCOTT FINNEY, SIOR**

503.225.8431

ScottF@norris-stevens.com

**Norris & Stevens**

INVESTMENT REAL ESTATE SERVICES

TCN  
WORLDWIDE  
REAL ESTATE SERVICES

AMO

Information contained herein has been obtained from others and considered to be reliable; however, a prospective purchaser or lessee is expected to verify all information to their own satisfaction.

04/06/2026

900 SW 5TH AVE, 17TH FLOOR | PORTLAND, OR 97204  
503.223.3171 • NORRIS-STEVENS.COM

# 19939 SW CIPOLE ROAD

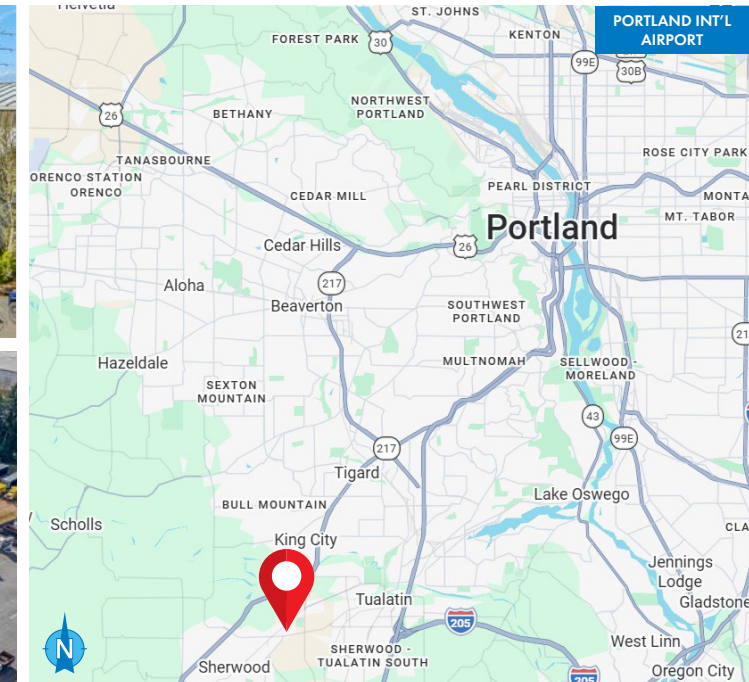
Sherwood, OR 97140

## PROPERTY DETAILS

- **Price:** **\$9,200,000**
- Total SF: ± 43,000 SF
- Total site: ± 5.15 acres
- **Building 1:** **± 33,200 SF**
  - Office: ± 1,038 SF - Including 5 privates
  - Grade: Five (5) - 14' clear
  - Dock: Four (4)
  - Clear height: 20' - 28'
  - Building features: 5-ton bridge crane  
Covered docks  
Mezzanine storage  
High clear height
- **Building 2:** **± 9,338 SF**
  - Grade: One (1)
  - Dock: One (1)
  - Clear height: 24'

## PROPERTY FEATURES

- Power: 4,000 amps/3-phase/480 volt
- Distributed electrical
- Distributed air
- Additional land for yard storage, or building expansion



For more information or a property tour, please contact:

**NICK CHESSAR**

503.225.8469

NickC@norris-stevens.com

**SCOTT FINNEY, SIOR**

503.225.8431

ScottF@norris-stevens.com

**Norris & Stevens**

INVESTMENT REAL ESTATE SERVICES



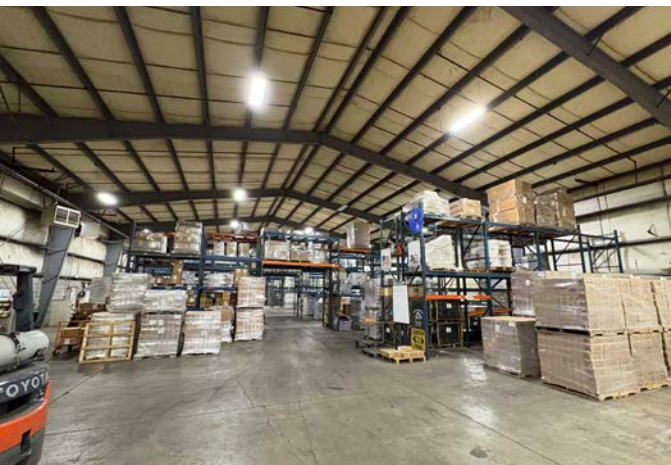
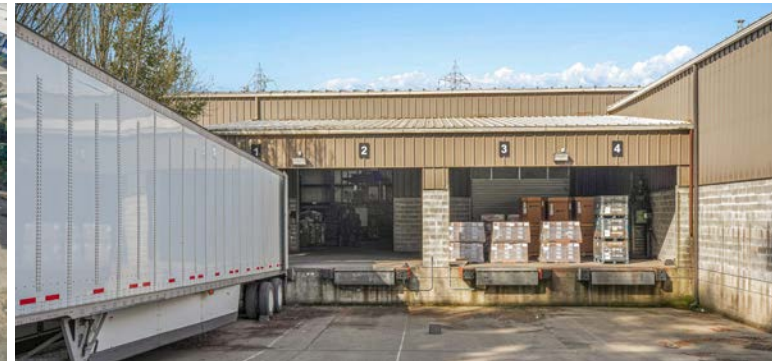
900 SW 5TH AVE, 17TH FLOOR | PORTLAND, OR 97204  
503.223.3171 • NORRIS-STEVENS.COM

Information contained herein has been obtained from others and considered to be reliable; however, a prospective purchaser or lessee is expected to verify all information to their own satisfaction.

PHOTOS

19939 SW CIPOLE ROAD

Sherwood, OR 97140



For more information or a property tour, please contact:

**NICK CHESSAR**

503.225.8469

NickC@norris-stevens.com

**SCOTT FINNEY, SIOR**

503.225.8431

ScottF@norris-stevens.com

Information contained herein has been obtained from others and considered to be reliable; however, a prospective purchaser or lessee is expected to verify all information to their own satisfaction.

**Norris & Stevens**

INVESTMENT REAL ESTATE SERVICES



900 SW 5TH AVE, 17TH FLOOR | PORTLAND, OR 97204

503.223.3171 • NORRIS-STEVENS.COM

AERIAL

19939 SW CIPOLE ROAD

Sherwood, OR 97140



- BUILDING EXPANSION
- STORAGE
- EXCESS YARD

BLDG 1

BLDG 2



For more information or a property tour, please contact:

**NICK CHESSAR**

503.225.8469

NickC@norris-stevens.com

**SCOTT FINNEY, SIOR**

503.225.8431

ScottF@norris-stevens.com

**Norris & Stevens**

INVESTMENT REAL ESTATE SERVICES

TCN  
WORLDWIDE  
REAL ESTATE SERVICES

AMO

900 SW 5TH AVE, 17TH FLOOR | PORTLAND, OR 97204

503.223.3171 • NORRIS-STEVENS.COM

Information contained herein has been obtained from others and considered to be reliable; however, a prospective purchaser or lessee is expected to verify all information to their own satisfaction.