

17157 VAN DYKE AVENUE
DETROIT, MICHIGAN

INDUSTRIAL FOR SALE
114,279 Square Feet Available



**SIGNATURE
ASSOCIATES**
KNOW SIGNATURE | KNOW RESULTS



PROPERTY FEATURES

- 114,279 square feet available
- 3,400 square feet office
- 11' – 22' clear height
- (5) 10' x 12' grade level doors
- (5) truckwells
- Large yard
- Ample parking, fenced & gated
- Sale Price: \$1,275,000 (\$11.16/sq. ft.)



For more information, please contact:

CHRIS MONSOUR

(248) 948 0107

cmonsour@signatureassociates.com

JOE STACK

(248) 359 0615

jstack@signatureassociates.com

SIGNATURE ASSOCIATES

One Towne Square, Suite 1200

Southfield, MI 48076

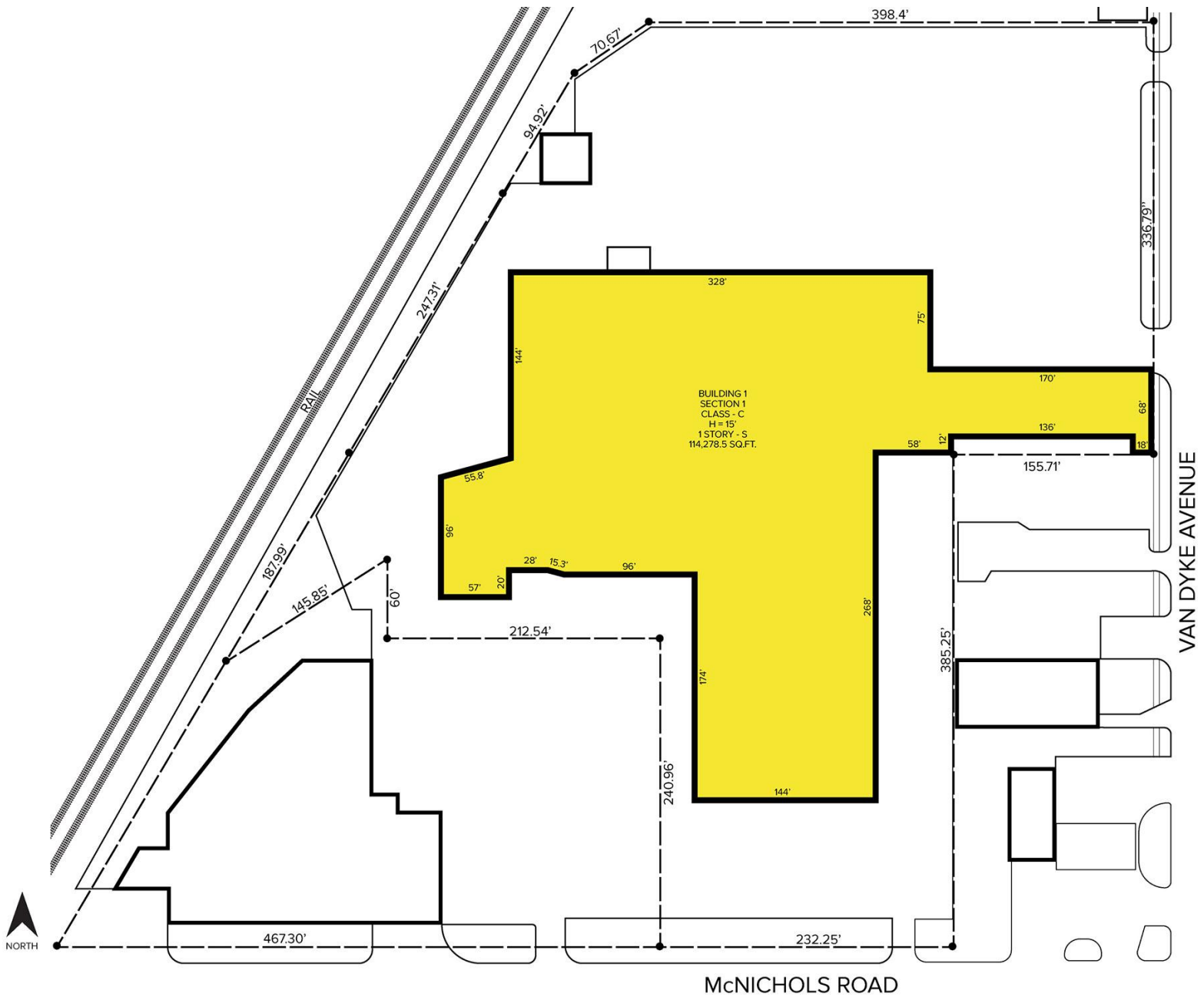
www.signatureassociates.com

17157 Van Dyke Avenue – Detroit, Michigan

Industrial For Sale

114,279
Square Feet
AVAILABLE

Site Plan



For more information, please contact:

CHRIS MONSOUR

(248) 948 0107

cmonsour@signatureassociates.com

JOE STACK

(248) 359 0615

jstack@signatureassociates.com

SIGNATURE ASSOCIATES

One Towne Square, Suite 1200

Southfield, MI 48076

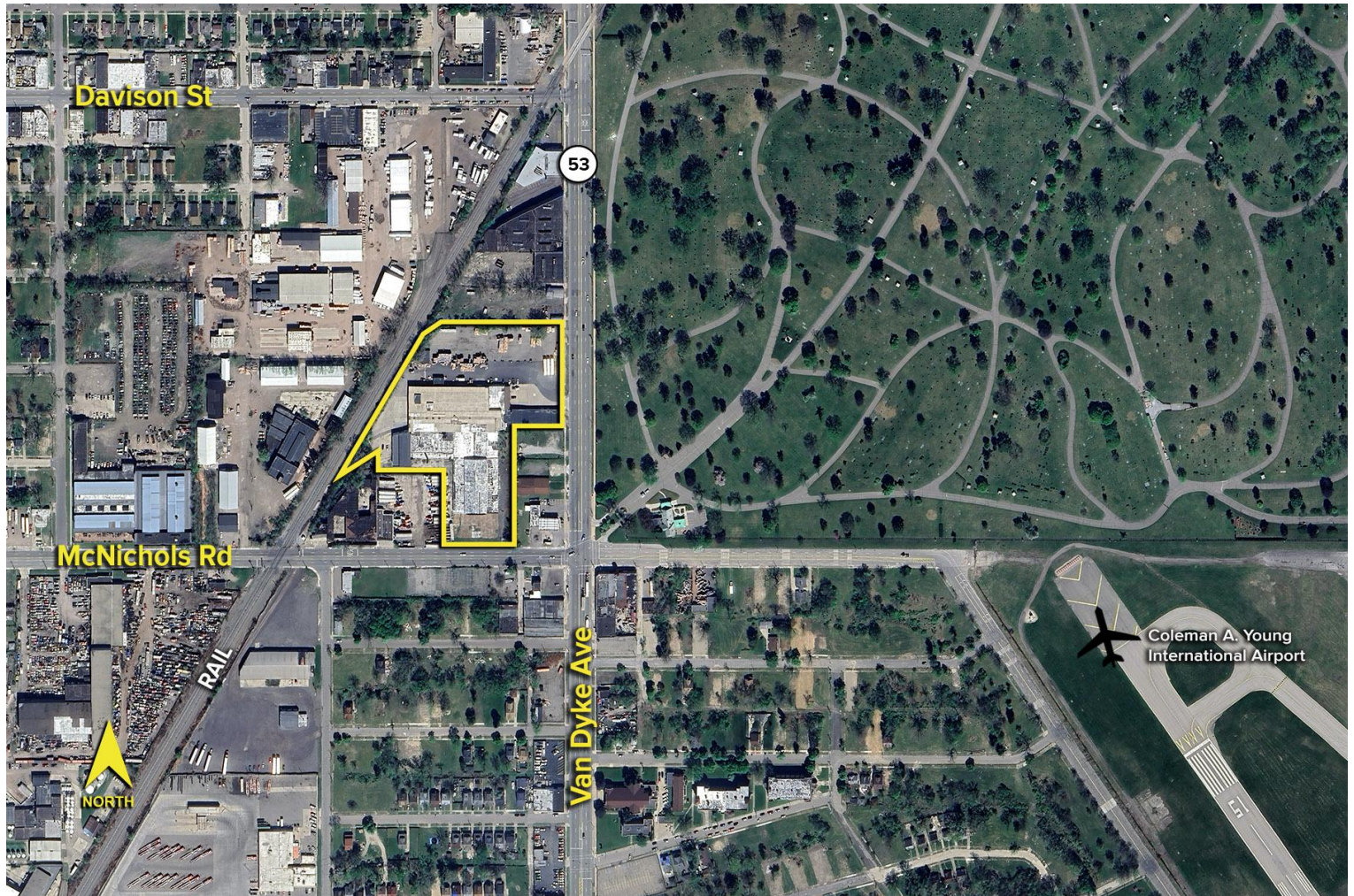
www.signatureassociates.com

17157 Van Dyke Avenue – Detroit, Michigan

Industrial For Sale

114,279
Square Feet
AVAILABLE

Aerial



For more information, please contact:

CHRIS MONSOUR

(248) 948 0107

cmonsour@signatureassociates.com

JOE STACK

(248) 359 0615

jstack@signatureassociates.com

SIGNATURE ASSOCIATES

One Towne Square, Suite 1200

Southfield, MI 48076

www.signatureassociates.com