

For Lease // Office Space Adjacent to Capitol

9 Capitol St, Concord, NH 03301



5,873 SF


About:

This building couldn't be closer to the State House. This 5,873 SF suite adjacent to the State House and School St parking garage is all about location. With its own private entrance, kitchenette, 2 bathrooms, 9 offices or 8 offices and a private conference room, this space can accommodate a wide array of uses: lobbyists, government agencies, nonprofits, etc. Suite comes fully furnished. Rent rate is \$18 PSF MG plus pro rata share of utilities & taxes, the suite is not separately metered.

Targeting a July 15 move in. Use must be approved by landlord. Access to shared conference rooms negotiable.


Contact Details:


 **Brian Dano, CCIM**

 603-377-0309

 Brian.Dano@SVN.com

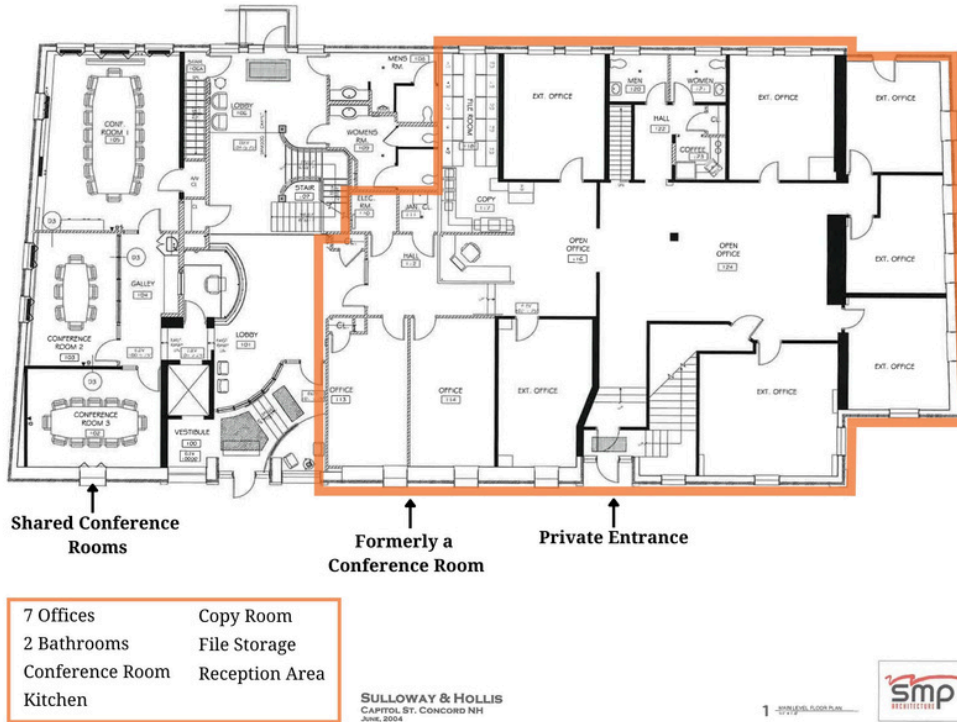
Sean Coughlin 

603-493-8581 

Sean.Coughlin@SVN.com 

For Lease // Office Space Adjacent to Capitol

9 Capitol St, Concord, NH 03301



Property Details:



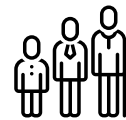
Population

1 mile: 9,759
3 miles: 29,729
5 miles: 46,362



Median HH Income

1 mile: \$90,823
3 miles: \$99,762
5 miles: \$110,670



Median Age

1 mile: 42 years
3 miles: 44 years
5 miles: 44 years

AVAILABLE SPACE // 5,873 SF

LEASE PRICE // \$18.00 SF/yr

LEASE TERMS // Modified Gross

ZONING // Central Business PD