

# TORRANCE TECH PARK

370 - 390 AMAPOLA AVENUE | TORRANCE, CA 90501



## PROPERTY HIGHLIGHTS

For more information, please contact:

### MAX P. EDDY

Associate

DRE#: 02163858

T: 562.354.2538

E: meddy@leelalb.com

### BRANDON CARRILLO

Principal

DRE#: 01745362

T: 562.354.2510

E: bcarrillo@leelalb.com

### GARRETT MASSARO. SIOR

Principal

DRE#: 01771471

T: 562.354.2516

E: gmassaro@leelalb.com



- 370 Amapola, Suite 218:** ±2,938 SF at \$1.20/SF
  - 370 Amapola, Suite 215-218:** ±5,689 SF at \$1.15/SF
  - 370 Amapola, Suite 215:** ±2,751 SF at \$1.20/SF
- 
- Professional Office & Industrial Spaces Available
  - Easy Access to Free Parking
  - High Image Multi-Tenant Office / R&D / Flex / Industrial Park
  - Professionally Managed and Maintained Business Park
  - \$0.25 / SF Common Area Maintenance Fee  
(Includes: Water / Trash / Landscaping / HVAC Maintenance / Etc.)
  - 3D Matterport Virtual Tour Available to View

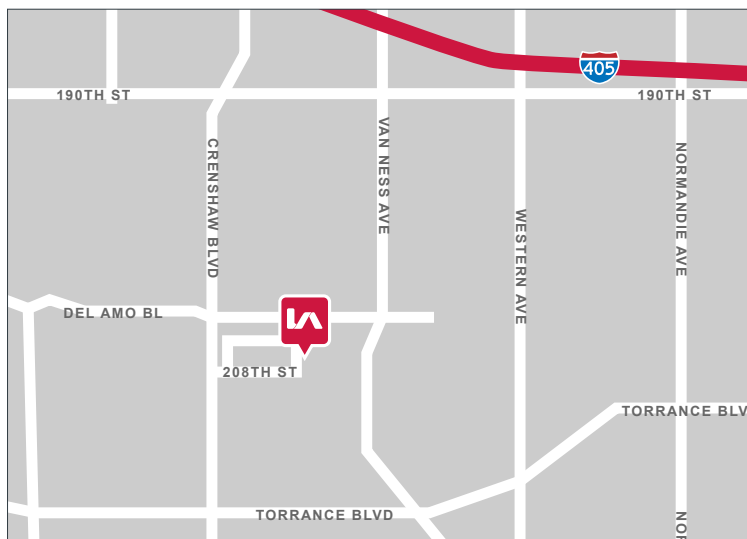
# TORRANCE TECH PARK

370 - 390 AMAPOLA AVENUE | TORRANCE, CA 90501

## AVAILABLE SUITES

### 370 AMAPOLA

SUITE	SIZE	RATE	DESCRIPTION	3D TOUR
215	±2,751 SF	\$1.20/SF MG + \$0.25/SF CAM	<ul style="list-style-type: none"><li>Available Now.</li><li>100% Office, 5 Window-Lined Private Offices, Kitchenette, Reception, Bull-Pen Area, 2 Private Restrooms</li></ul>	
218	±2,938 SF	\$1.20 / SF MG + \$0.25 / SF CAM	<ul style="list-style-type: none"><li>Available Now</li><li>100% office space, Private entry, 4 Private offices, Kitchen, 2 Private restrooms, Large Conference Room and Lots of Open Space</li></ul>	

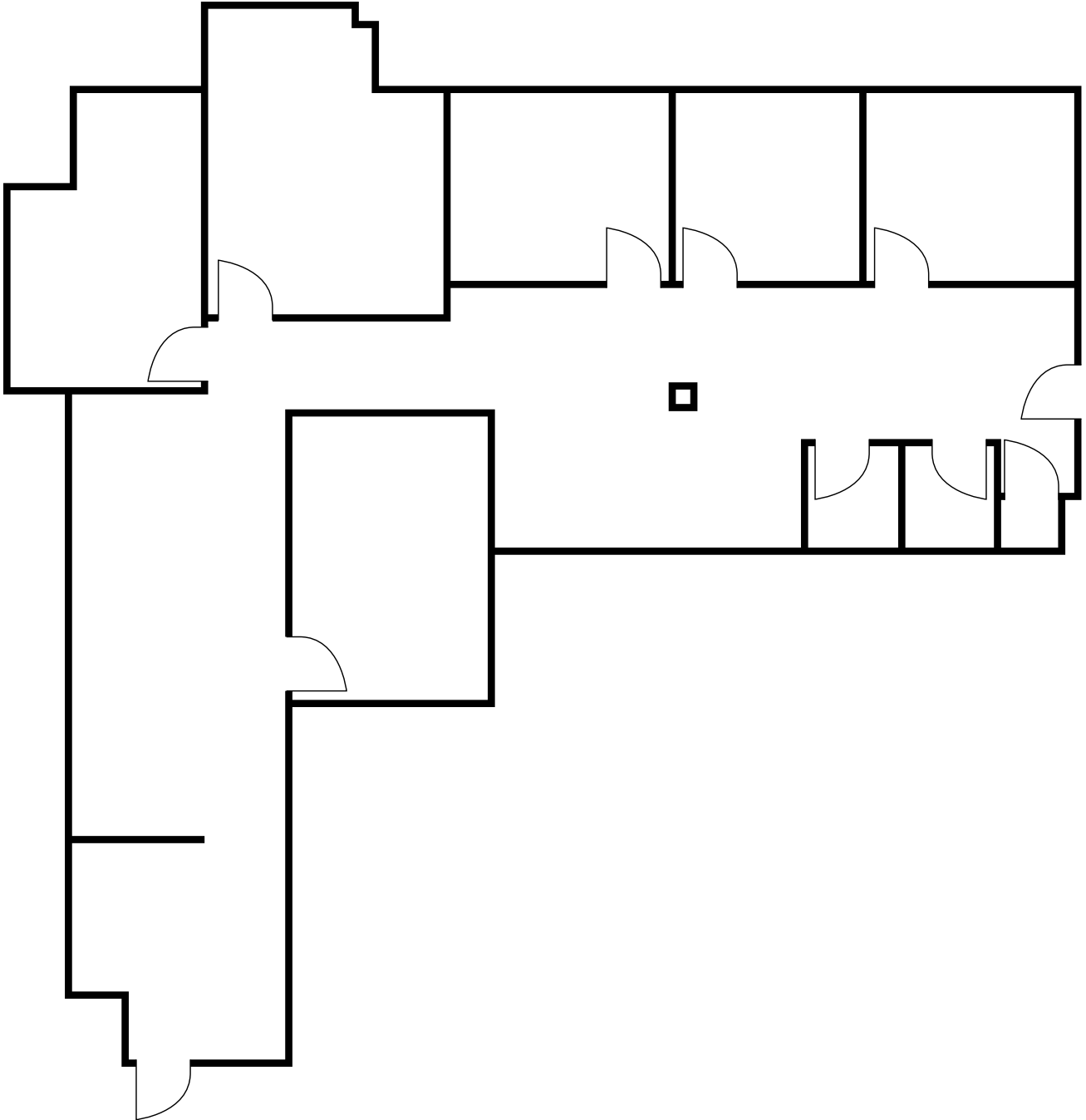


Copyright © Lee & Associates. All rights reserved. No part of this work may be reproduced or distributed without written permission of the copyright owner. The information contained in this report was gathered by Lee & Associates from sources believed to be reliable. Lee & Associates, however, makes no representation concerning the accuracy or completeness of such information and expressly disclaims any responsibility for any inaccuracy contained herein.

# TORRANCE TECH PARK

370 - 390 AMAPOLA AVENUE | TORRANCE, CA 90501

## 370 AMAPOLA AVE - SUITE 215 FLOOR PLAN (NOT DRAWN TO SCALE)



Copyright © Lee & Associates. All rights reserved. No part of this work may be reproduced or distributed without written permission of the copyright owner. The information contained in this report was gathered by Lee & Associates from sources believed to be reliable. Lee & Associates, however, makes no representation concerning the accuracy or completeness of such information and expressly disclaims any responsibility for any inaccuracy contained herein.

# TORRANCE TECH PARK

370 - 390 AMAPOLA AVENUE | TORRANCE, CA 90501

## 370 AMAPOLA AVE - SUITE 215 PHOTOS

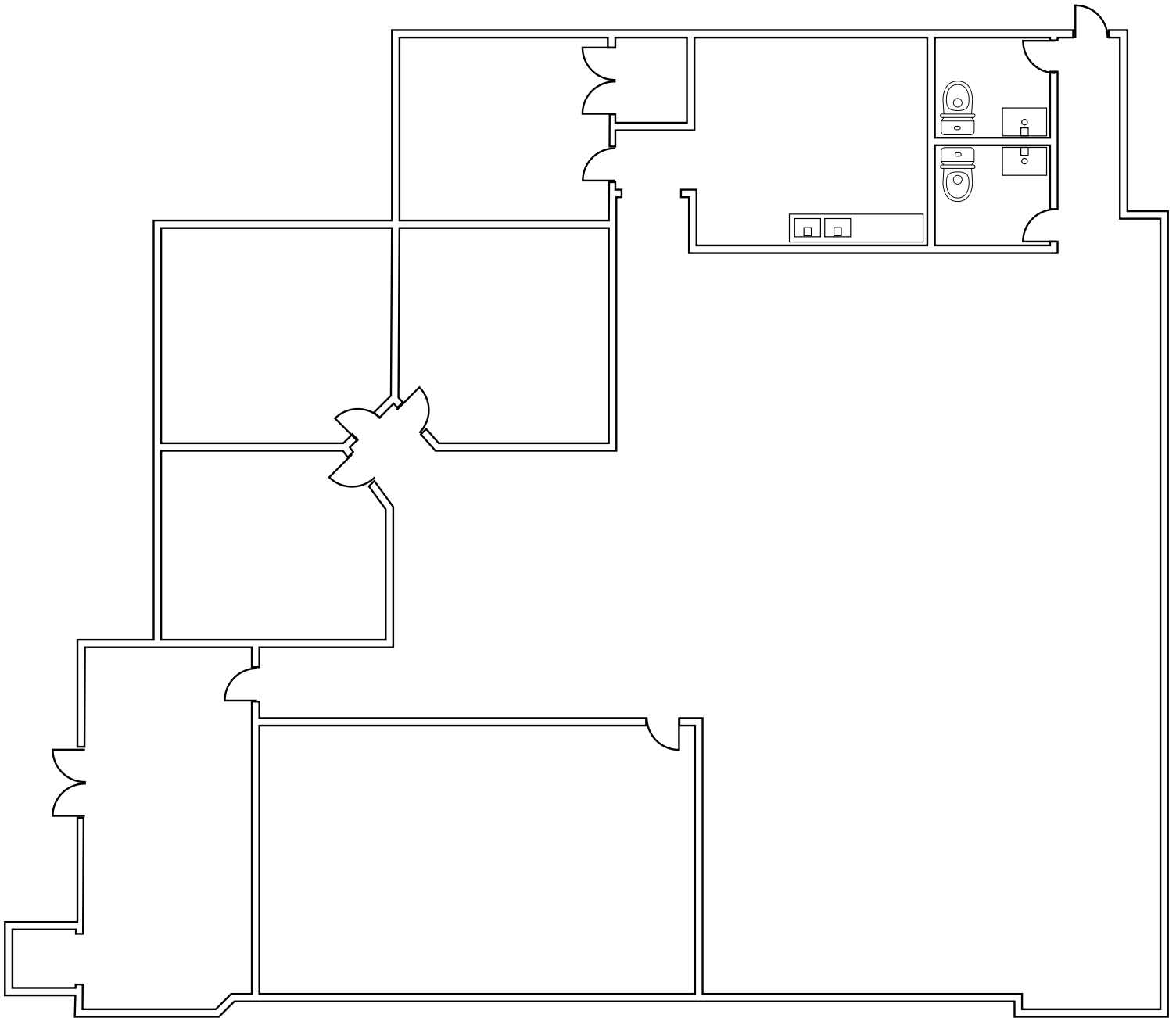


Copyright © Lee & Associates. All rights reserved. No part of this work may be reproduced or distributed without written permission of the copyright owner. The information contained in this report was gathered by Lee & Associates from sources believed to be reliable. Lee & Associates, however, makes no representation concerning the accuracy or completeness of such information and expressly disclaims any responsibility for any inaccuracy contained herein.

# TORRANCE TECH PARK

370 - 390 AMAPOLA AVENUE | TORRANCE, CA 90501

## 370 AMAPOLA AVE - SUITE 218 FLOOR PLAN (NOT DRAWN TO SCALE)

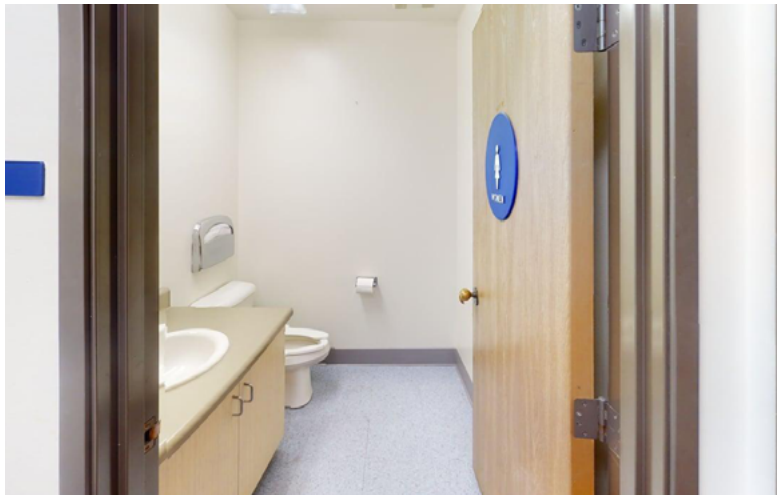


Copyright © Lee & Associates. All rights reserved. No part of this work may be reproduced or distributed without written permission of the copyright owner. The information contained in this report was gathered by Lee & Associates from sources believed to be reliable. Lee & Associates, however, makes no representation concerning the accuracy or completeness of such information and expressly disclaims any responsibility for any inaccuracy contained herein.

# TORRANCE TECH PARK

370 - 390 AMAPOLA AVENUE | TORRANCE, CA 90501

## 370 AMAPOLA AVE - SUITE 218 PHOTOS



Copyright © Lee & Associates. All rights reserved. No part of this work may be reproduced or distributed without written permission of the copyright owner. The information contained in this report was gathered by Lee & Associates from sources believed to be reliable. Lee & Associates, however, makes no representation concerning the accuracy or completeness of such information and expressly disclaims any responsibility for any inaccuracy contained herein.