

SATELLITE VIEW - PARKING CONDITIONS

SUITE	TENANT	Office SF	USE	PARKING	Warehouse SF	USE	PARKING	Occupancy	NANCS CODE	DESCRIPTION
100	Edison Security & Electronics (SIVDE01 LLC)	875	B	3				3	238210	Retail/Venue Sales (including independent sales on an auction site)
101	Free Harshini Learning Center (E.Nest Learning Center)	1075	B	4				4	611000	Education
100B	G3 Soft	1900	B	7				7	541511	IT Service
101B	Stanley Steemer	1100	B	4	6565	S-1	2	6	7217	Carpet Cleaning Business
102	Music Forever LLC	2200	22	4					611620	Teaching /School Instrument Rental Business
102B	PCAC, LLC				6600	S-1	2	2	611620	Athletic Center
103	Galaxy Tile, LLC	570	B	2	4156	S-1	2	4	238900	Stone Flooring / Tile
103B	NCR Corporation	3600	B						334118	Training Classes (ATMs)
104	Vision Solar				2200	S-1	2	2	238210	Solar Panel Installation
104B	EH Auto Parts, LLC	340			4870	S-1	2	2	423120	Wholesale/Retail sale of auto parts, equipment, accessories and supplies
200	JM Information Systems, LLC	1185	B	5				5	541519	IT Consulting Service
201	Atlas Concrete Corp.	1032	B	5				5	238110	Office Space for Concrete next door
201B	Vision Solar	1900	B	4				4	238210	Solar Panel Installation
202/206	Vacant	2512	B	5				5		
203	ANIS Technologies	870	B	4				4	541511	IT Services
204	BrightBird	892	B	3				3	541511	IT Services
205	Techno Solutions Inc.	750	B	3				3	519	IT Services
207	Magnam Cargo LLC	1053	B	4				4	488100	Freight Forwarding
230	Vacant	3660	B	10		S-1	2	12		
YARD	Landscape Design	0						4	0	Landscaping
BUM	B.J. McGlone Co.	5288	B	15	7906	S-1	4	19	23620	Construction
Totals		30602		82	32197		16	98		
										PARKING TOTAL 98
										TOTAL SF 62799

SCOPE OF WORK
DOCUMENT THE EXISTING BUILDING, IDENTIFY ALL TENANT ASBESTHOS AND LEAD FOR THE PURPOSE OF APPLYING FOR A CERTIFICATE OF OCCUPANCY FOR EACH SPACE

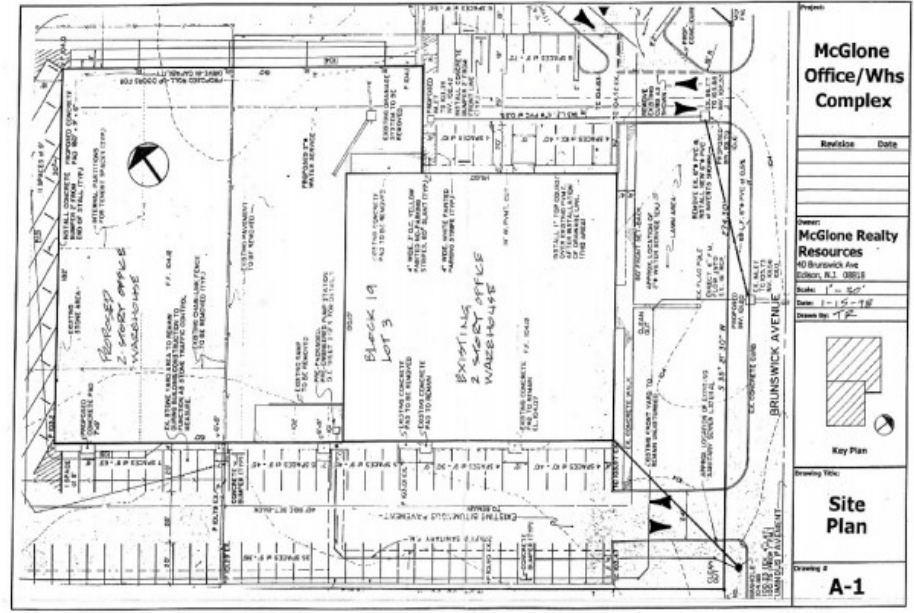
EXISTING
USE GROUP: B
CONSTRUCTION CLASS: 3B
SQUARE FOOTAGE: 3083 SF
COLLAGE: 0
OCCUPANCY LOAD: 70

LEAD, ASBESTHOS, AND RADON
LEAD: PER 2019 LEAD TEST CODE (L)
RADON: PER 301 CODE, N.J.A.C. 26:27
ASBESTHOS: PER 2019 BUILDING CODE
-ASPC 2019 PLUMBING CODE
-MEC 2019 CODE
-MECC 2019 ENERGY CODE
-MEC 2019 MECHANICAL CODE
-FAC 2019 FUEL & GAS CODE

WIND LOADS
FIRST FLOOR: 100 LBS TO DEAD
SECOND FLOOR: 100 LBS TO DEAD
ROOF: 30 DEAD TO LOAD
WIND: 100 MPH (OR LESS)



96 TOTAL PARKING SPACES PROVIDED (EXISTING)



SITE PLAN 1 in = 30 ft

PROJECT DESCRIPTION:
B. J. McGlone & Co., INC.
40 Brunswick Avenue
Edison, NJ 08818-0314
Job No. 19-023 McGlone

DATE:
03.07.2019

SCALE:
AS NOTED

SHEET:
A-1

REVISIONS:

NO.	DESCRIPTION	DATE
1		
2		
3		
4		
5		

CONTRACTOR:

NO.	DESCRIPTION	DATE
1		
2		
3		
4		
5		

ARCHITECT:
Marselle Architects
305 Main Street
Second Floor Newark NJ 08140
973-996-5656 FAX 973-712-0622-5806
9th Ave Newark NJ 07102