

CORBELL PLAZA

15456 VENTURA BOULEVARD
SHERMAN OAKS, CA 91403



AVAILABILITIES

Available Space:

SUITE #	RATE	SIZE
300	\$2.50/SF, FSG	1,750 SF
302	\$2.50/SF, FSG	1,835 SF
408	\$2.50/SF, FSG	1,520 SF
510	\$2.50/SF, FSG	1,300 SF

Highlights:

- Prime Sherman Oaks Location
- Close proximity to 101/405 freeway intersection
- Adjacent to Sherman Oaks Galleria

Parking:

- Covered Spaces @ \$95.00/month

For more information, contact:

ADAM COMORA

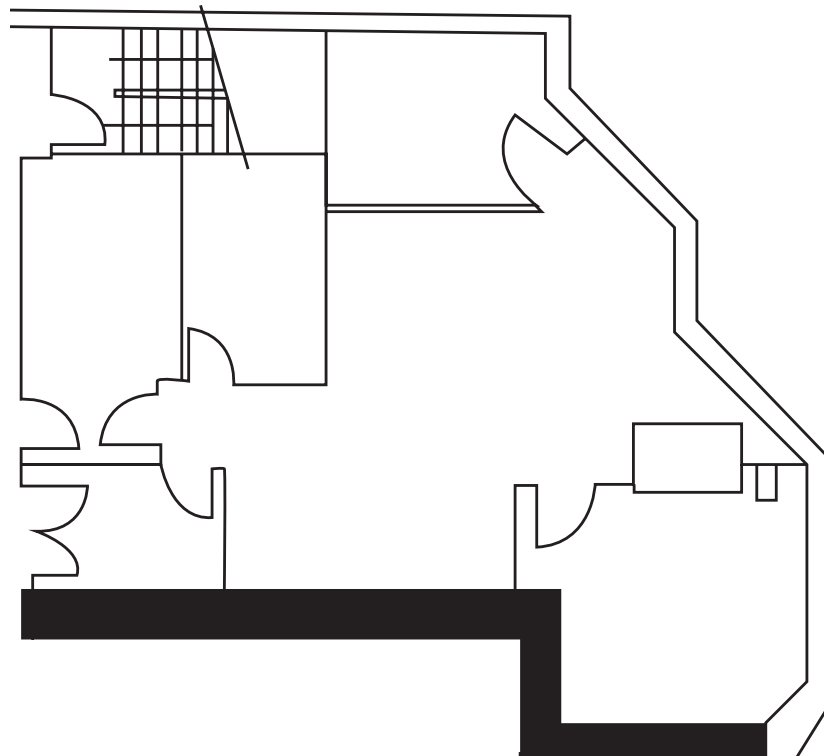
Senior Vice President
c. 818 521 2623 | o. 818 742 1610
acomora@naicapital.com | Cal DRE Lic#01312271

FLOOR PLAN

3RD Floor

SUITE 300 • 1,750 SF

Not to scale and may not be accurate. For illustration purposes only.

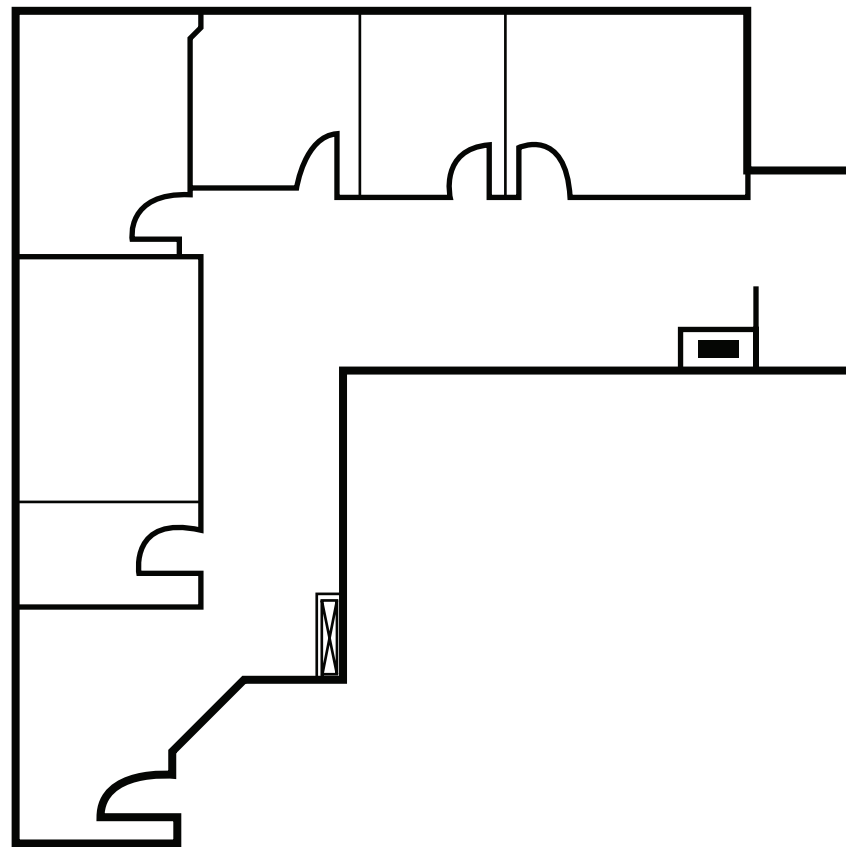


FLOOR PLAN

3RD Floor

SUITE 302 • 1,835 SF

Not to scale and may not be accurate. For illustration purposes only.

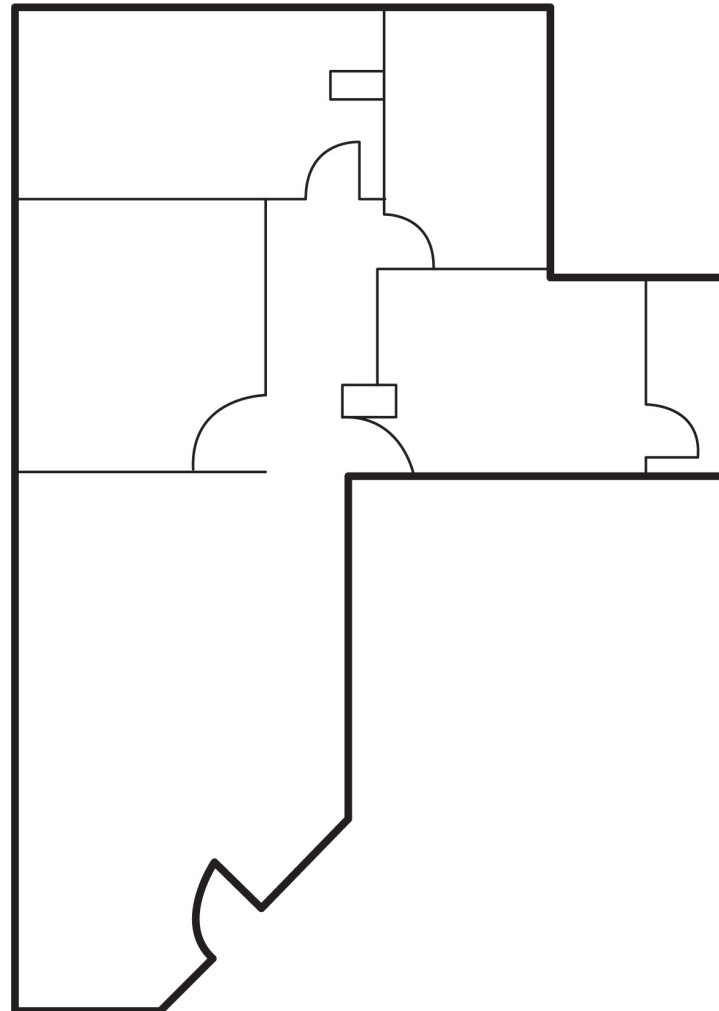


FLOOR PLAN

4TH Floor

SUITE 408 • 1,520 SF

Not to scale and may not be accurate. For illustration purposes only.

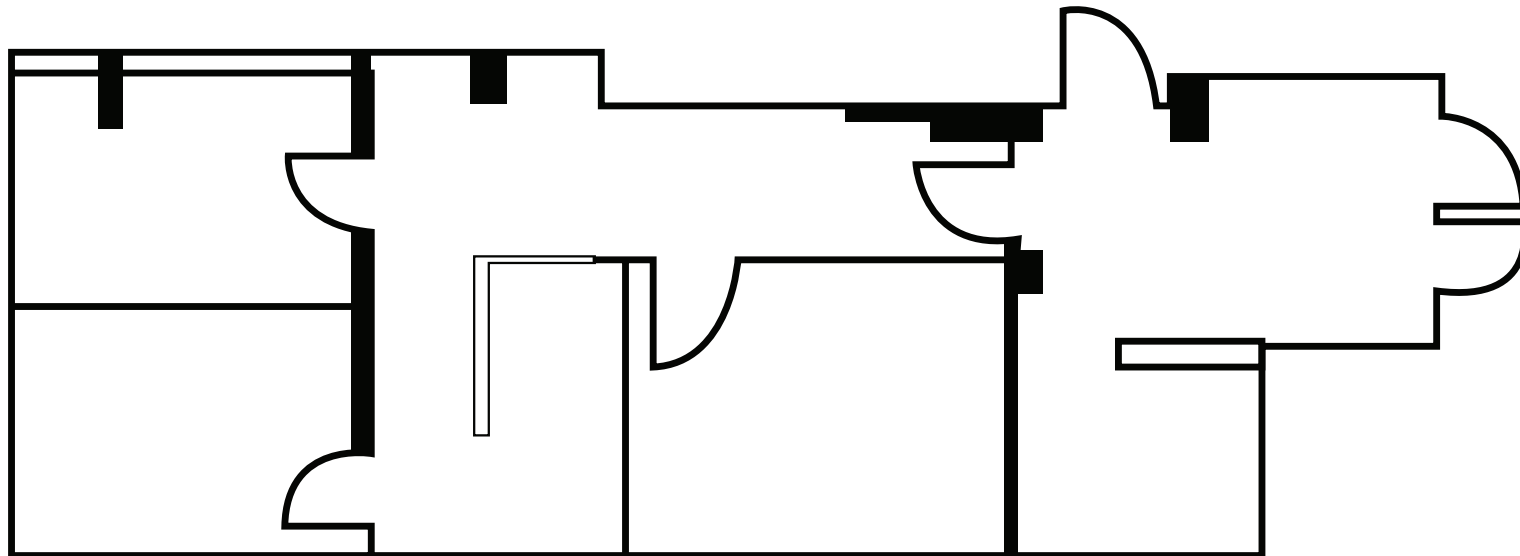


FLOOR PLAN

5TH Floor

SUITE 510 • 1,300 SF

Not to scale and may not be accurate. For illustration purposes only.



CORBELL PLAZA

15456 VENTURA BOULEVARD
SHERMAN OAKS, CA 91403

THE BOULEVARD TEAM

LEASING AND SALES EXPERTS

ADAM COMORA

Senior Vice President

c. 818 521 2623 | o. 818 742 1610

acomora@naicapital.com | Cal DRE Lic#01312271



No warranty, express or implied, is made as to the accuracy of the information contained herein. This information is submitted subject to errors, omissions, change of price, rental or other conditions, withdrawal without notice, and is subject to any special listing conditions imposed by our principals. Cooperating brokers, buyers, tenants and other parties who receive this document should not rely on it, but should use it as a starting point of analysis, and should independently confirm the accuracy of the information contained herein through a due diligence review of the books, records, files and documents that constitute reliable sources of the information described herein. NAI Capital CA DRE #01990696