



SLABY & ASSOCIATES

Commercial Lease – Restaurant/Event Space

557 North St, Madison, WI



## **Northstreet: Where Mornings Start Strong and Evenings Are Craving Your Neighborhood-Engaging Vision**

Nestled in lively east-side Madison, this standout corner space—known locally as Northstreet—offers exciting lease opportunities within a pocket of neighborhood night life. Inside, two beloved morning tenants, Bloom Bake Shop and Cafe Domestique, create a steady buzz as neighbors gather for pastries, coffee, meetings, and remote work.

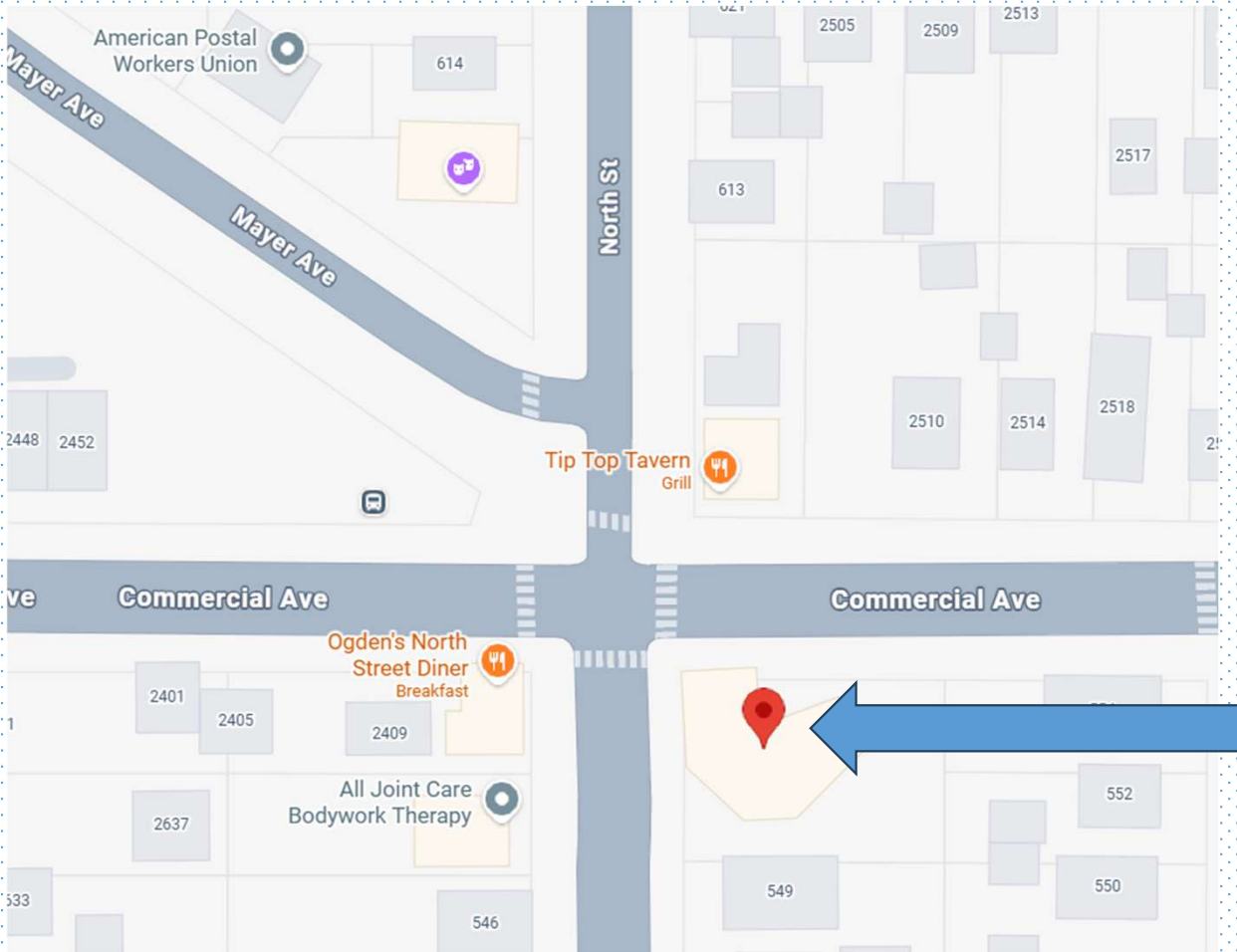
As the day transitions, the space is perfectly positioned for a tenant who can shape its evening identity and unlock its full potential. With its converted workshop charm, open seating layout, roll-up garage door for seamless indoor/outdoor flow, eclectic interior art, and vibrant exterior murals, the property offers a distinctive and flexible venue ideal for private gatherings, live entertainment, pop-ups, tastings, and host community events. Bring your “seasoned” food & beverage operation here to capitalize on the unlimited potential.

A spacious patio and relaxed outdoor setting further expand what’s possible—creating a natural hub for amazing dining, craft beers, and memorable celebrations.

The visionaries behind this remarkable property are looking for a partner who can carry the good vibes into the evening and deliver the neighborhood’s next go-to destination for food, beverages, and unique experiences.

Reach out today to discuss how your concept can thrive here and help shape a signature east-side evening space.

## Madison East Side Neighborhood



# *Northstreet*

557 North Street  
MSN, WI



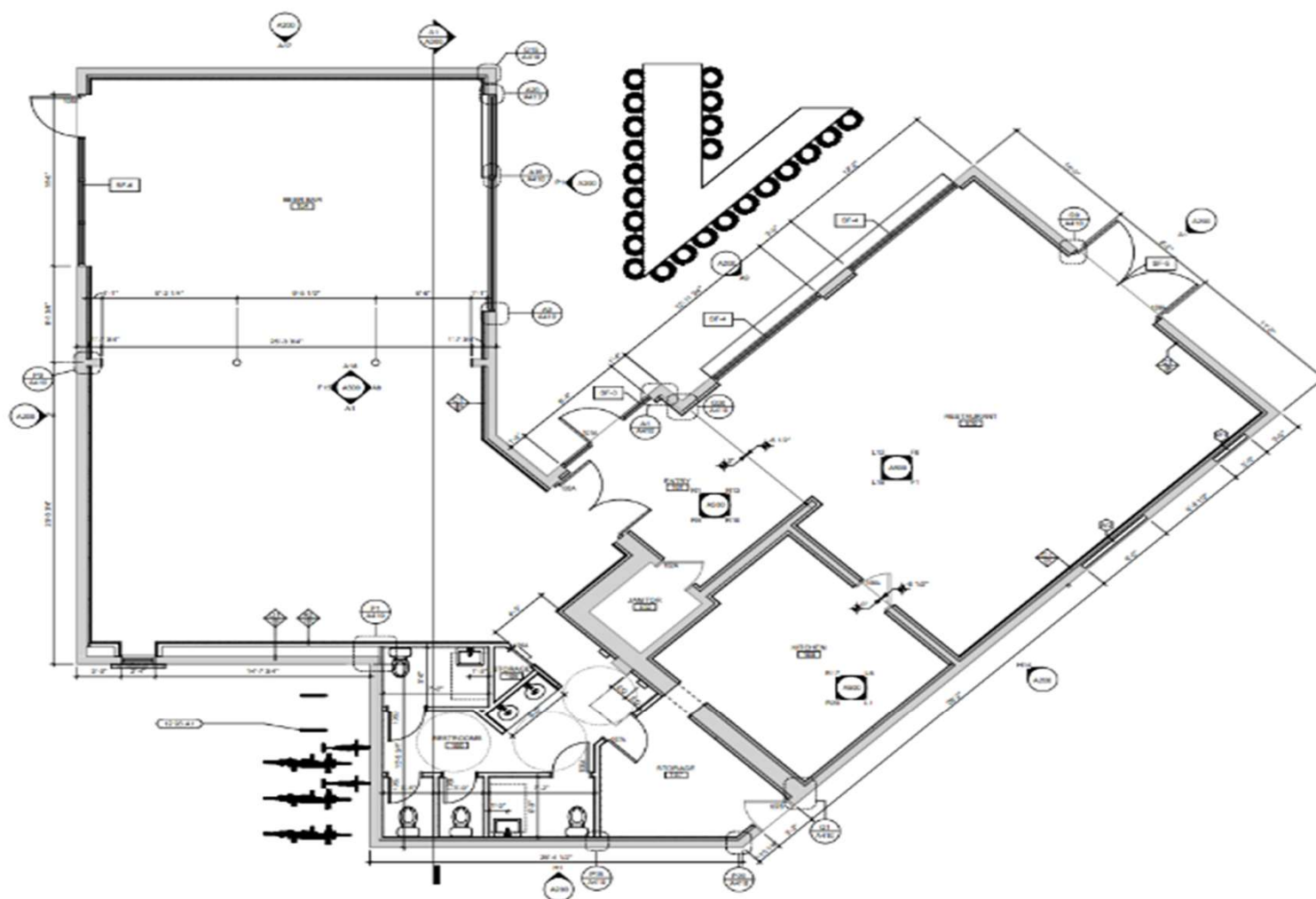


# Northstreet - Evening Space Available



- Premiere Outdoor Space
- Bar Service Window
- Flexible Space  
Indoor/Outdoor
- Growing Neighborhood
- Local Foot Traffic
- Minutes to Downtown  
and Airport
- **CALL TODAY & DISCUSS  
OPPORTUNITIES!!!**

# Floor Plans





# Established Tenants

## Bakery

Bloom Bake Shop

Closed Mondays

Tue-Fri

7 am-3 pm

Sat - Sun

8 am - 1 pm



## Coffee

Cafe Domestique

Mon - Fri

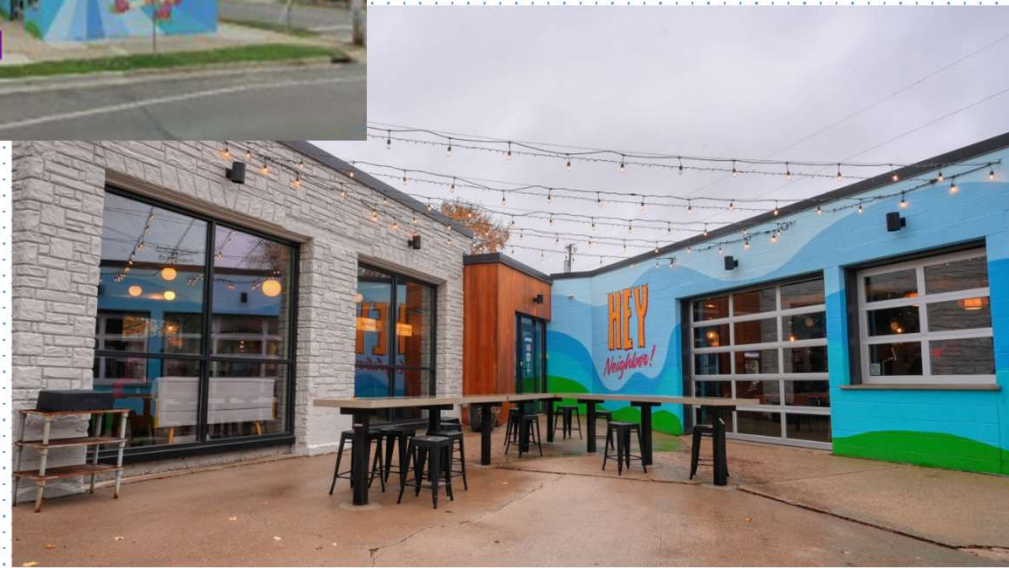
7 am-3 pm

Sat - Sun

8 am - 3 pm



# Highly Desired Patio



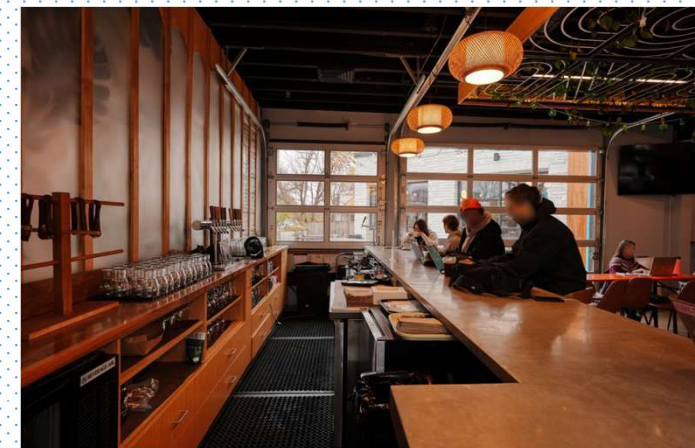


# Lively Outdoor Space





# Unique Interior Amenities





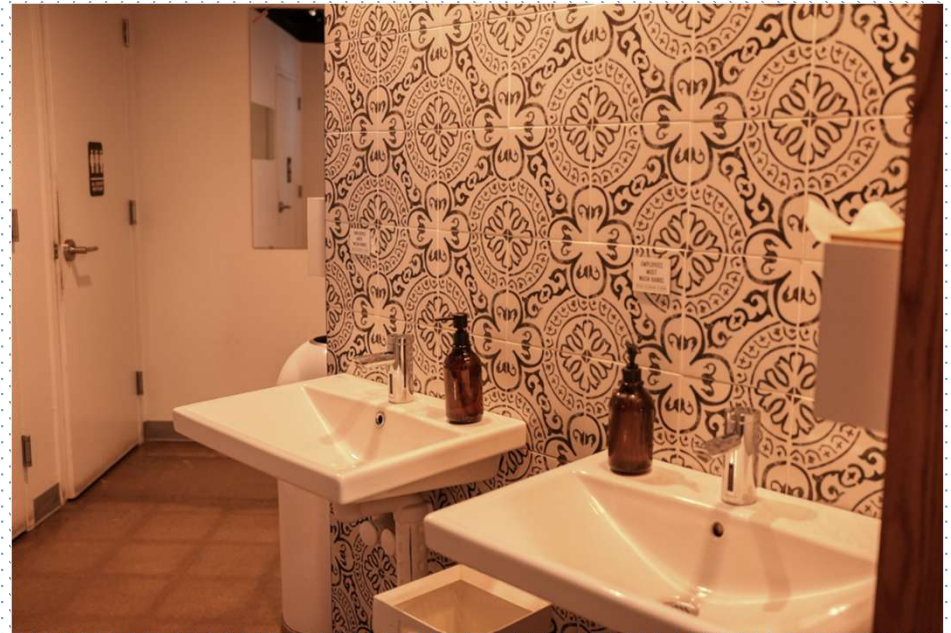
# Interior



Common Area  
Furniture Repairs  
included in CAM



## Common Area - Restrooms



- Four Gender Neutral Restrooms
- Communal Handwash Area
- All bathroom maintenance and cleaning included in the monthly CAM



# Exterior



- Exterior Grounds, Snow Removal, Landscaping, Weather Mat Replacement
- Above included in CAM



# Exterior



-Utilities, Trash, Music, Wifi  
-Above included in CAM





# HEALTHY TOURISM

## Visits to Destinations in Greater Downtown Madison\* (in millions)

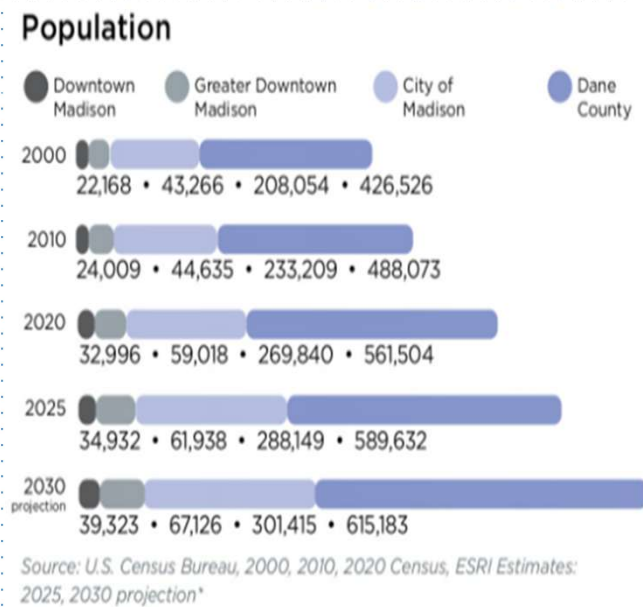
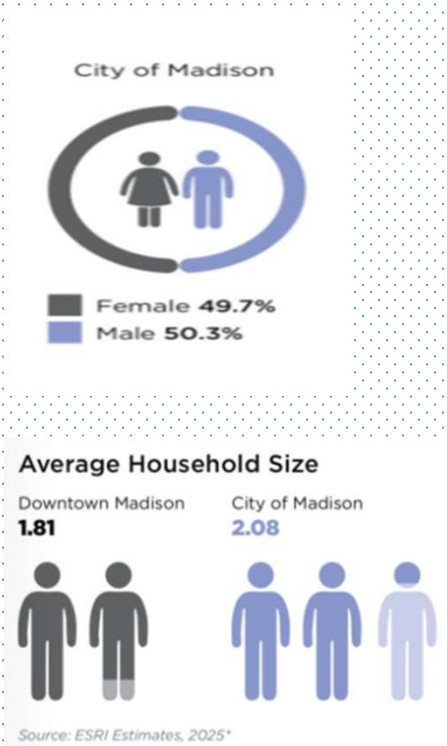


Sources: Alliant Energy Center, Big Top Events Breese Stevens Field, Chazen Museum of Art/University of Wisconsin-Madison (included in 2024-2025 numbers only), Henry Vilas Zoo, Madison Children's Museum (fiscal year July 1-June 30), Madison Museum of Contemporary Art, Madison Public Library, Monona Terrace Community & Convention Center Annual Report, Overture Center for the Arts (season July-June), UW Athletic Department (all facilities, July 1-June 30), UW-Madison Mead Witter School of Music/Hamel Music Center (included in 2024-2025 numbers only), Wisconsin Department of Administration (Wisconsin State Capitol tours), Wisconsin Historical Museum, Wisconsin Institutes for Discovery (not included starting 2024-2025), Wisconsin Union (fiscal year July 1-June 30), and Wisconsin Veterans Museum. \*Additional destinations may be located in downtown Madison that are not included in these numbers.



# Madison Demographics & Highlights

**POPULATION: 288,194**



## Race and Ethnicity

Race and Ethnicity	Downtown Madison		City of Madison	
	2000	2025	2000	2025
American Indian and Alaska Native	0.3%	0.4%	0.4%	0.5%
Asian	6.1%	14.7%	5.8%	10.3%
Black or African American	4.3%	3.7%	5.8%	7.8%
Hispanic or Latino (of any race)	3.7%	7.0%	4.1%	9.6%
Native Hawaiian and Other Pacific Islander	0.1%	0.1%	<0.1%	0.1%
White	85.8%	71.7%	84%	68.8%
Some other race	1.4%	2.1%	1.7%	4.2%
Two or more races	1.9%	7.3%	2.3%	8.3%

Source: U.S. Census Bureau, 2000, ESRI Estimates: 2025\*

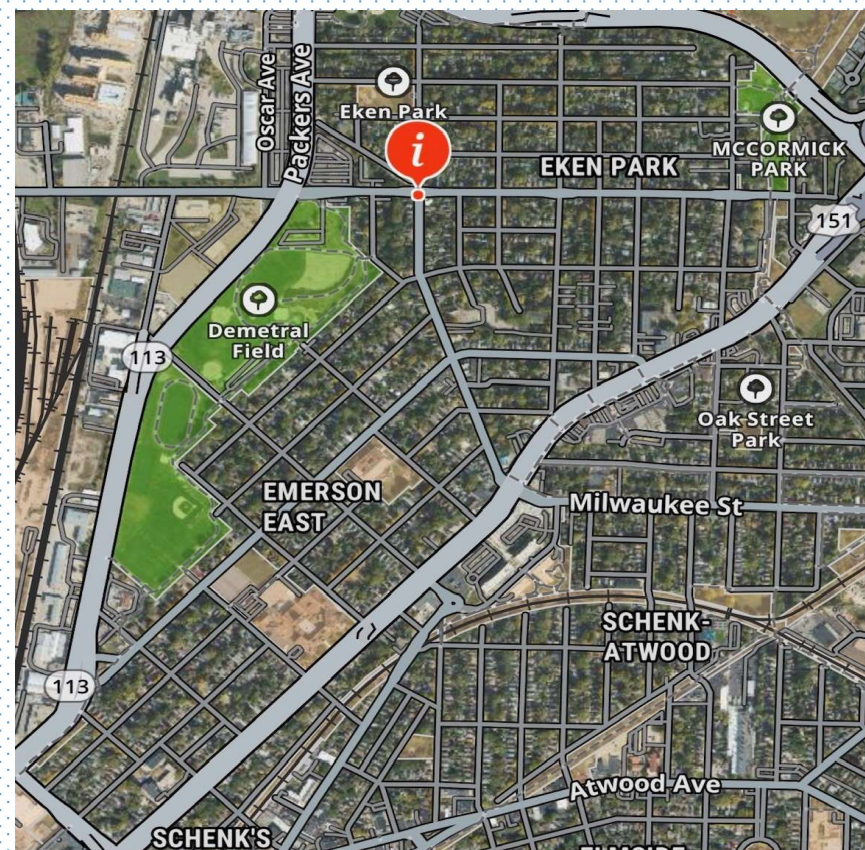
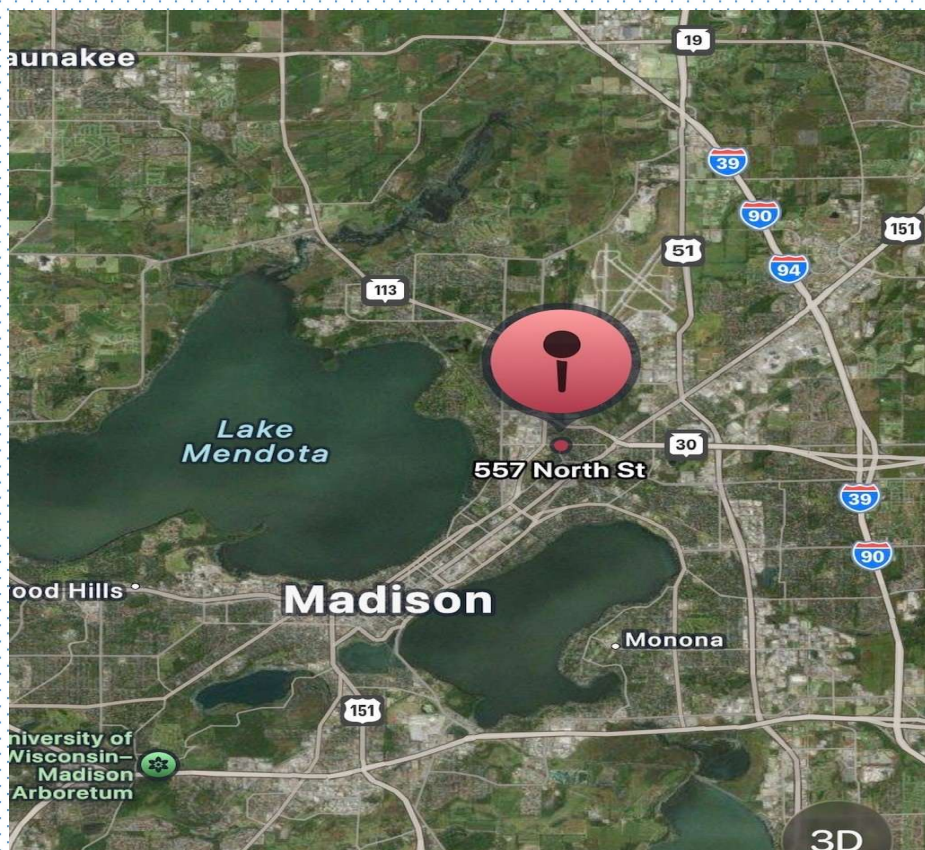
## Age in Downtown Madison

Age	2000	2025
Under 15 years	0.8%	4.8%
15 to 34 years	87.4%	79.2%
35 to 54 years	7.7%	8.3%
55 to 74 years	2.1%	5.4%
75 years and older	2.0%	2.3%

Source: U.S. Census Bureau, 2000 Census; ESRI Estimates, 2025\*



# East Side of Madison, WI







**SLABY & ASSOCIATES**  
COMMERCIAL REAL ESTATE  
BROKERAGE

1100 John P Livesey Boulevard, Verona, WI 53593  
Office: 608-333-4130 Fax: 608-845-2296  
<https://slabyandassociates.com>

**Please call, text, or email with any  
questions!**

**Derek Morrison**

**608-893-4568**

**[derekm@slabyandassociates.com](mailto:derekm@slabyandassociates.com)**