

# 2470 W. HORIZON RIDGE PKWY.

Henderson, NV 89052

AVAILABLE  
For Lease



5960 South Jones Boulevard  
Las Vegas, Nevada 89118  
T 702.388.1800  
F 702.388.1010  
[www.mdlgroup.com](http://www.mdlgroup.com)

**Michael Greene**  
Vice President  
Lic#: S.0186326  
702.388.1800  
[mgreene@mdlgroup.com](mailto:mgreene@mdlgroup.com)

**Luke Ramous**  
Senior Advisor  
Lic#: S.0188531  
702.941.7372  
[lramous@mdlgroup.com](mailto:lramous@mdlgroup.com)

**Hayim Mizrachi, SIOR, CCIM**  
CEO | Principal | Broker  
Lic#: B.0143643.corp  
702.388.1800  
[hmizrachi@mdlgroup.com](mailto:hmizrachi@mdlgroup.com)





Leasing Details



**\$1.75 PSF NNN**  
Lease Rate



**\$0.50 PSF**  
CAM Charges



**±3,380 SF**  
Space Available

Property Highlights

- Single story office building for lease in Green Valley Ranch
- Office suites available and well maintained with covered parking, sprinklers, and landscaping
- Efficient suite design
- High traffic counts of ±21,500 vehicle per day via Horizon Ridge Parkway
- Conveniently located within minutes of Green Valley Ranch, Eastern Avenue commercial corridor, and the exclusive communities of Anthem, Seven Hills, and MacDonald Highland
- Numerous amenities are within walking distance that include Target, Staples, Starbucks, and Roberto's
- Easy access to I-215 from Green Valley Parkway

Demographics

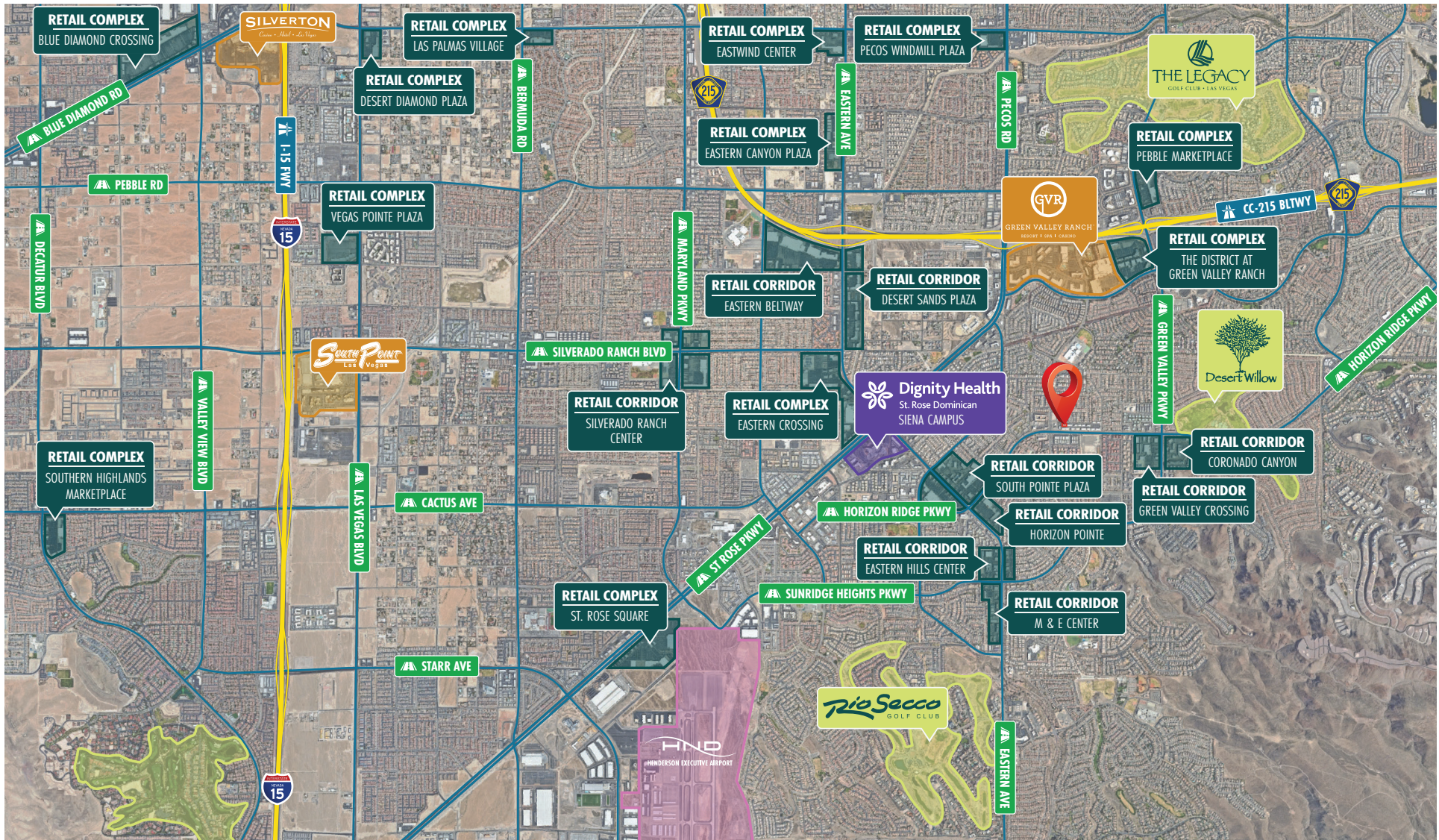
Population	1 mile	3 miles	5 miles
2024 Population	17,527	141,638	313,953
Average Household Income	1 mile	3 miles	5 miles
2024 Average Household Income	\$138,559	\$129,491	\$121,814



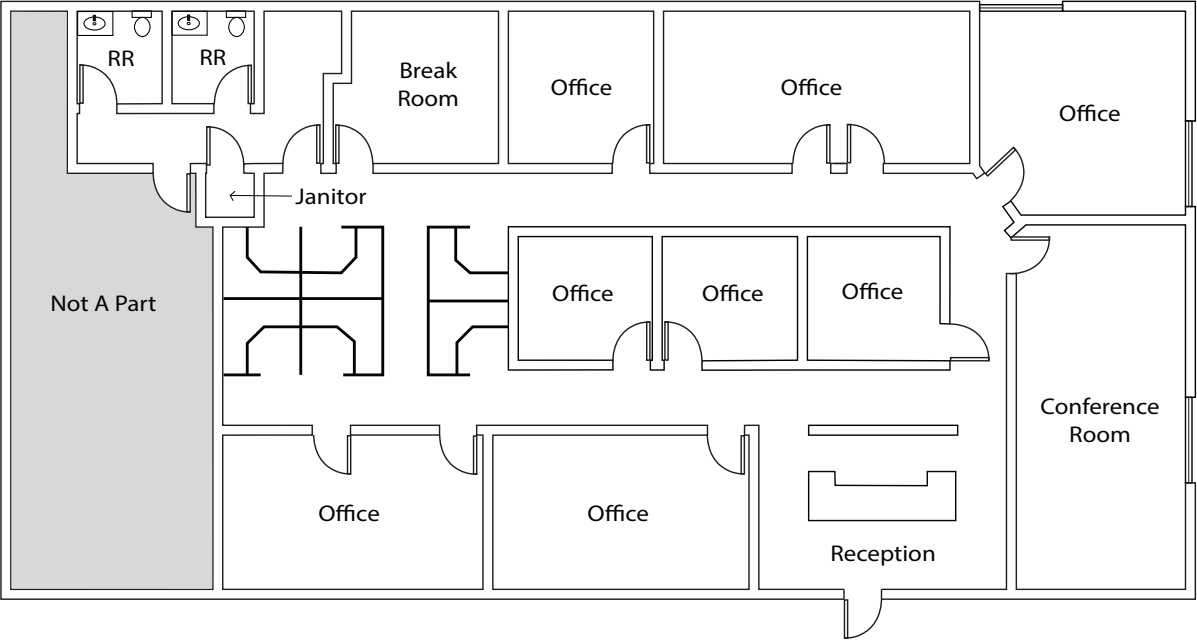
2470 WEST HORIZON RIDGE PARKWAY  
Henderson, NV 89052

For Lease

● Retail Center ● Airport ● Golf & Recreation ● Hospital ● Casino & Resort







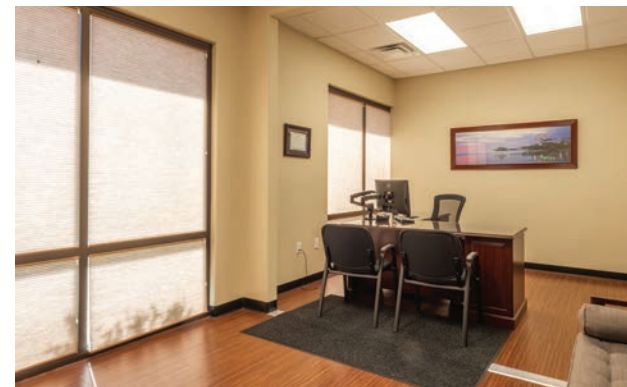
Suite 120 Details

+ Total SF:	±3,380
+ Lease Rate:	\$1.75 PSF NNN
+ CAM Charges:	\$0.50 PSF
+ Offices:	8
+ Conference Room:	2
+ Break Room:	Yes
+ Available:	Immediately

Drawings and plans are not to scale. Any measurements are approximate and are for illustrative purposes only. There is no guarantee, warranty or representation as to the accuracy or completeness of any plans or designs.

2470 WEST HORIZON RIDGE PARKWAY  
Henderson, NV 89052

For Lease



 **MDLGroup**  
Service you deserve. People you trust.

 **CORFAC**  
INTERNATIONAL  
MEMBER | PARTNER

5960 South Jones Boulevard  
Las Vegas, Nevada 89118

T 702.388.1800 | F 702.388.1010  
[www.mdlgroup.com](http://www.mdlgroup.com)



# Clark County Nevada

## Synopsis

As of the 2020 census, the population was 2,265,461, with an estimated population of 2,350,611 in 2024. Most of the county population resides in the Las Vegas Census County Divisions across 435 square miles. It is by far the most populous county in Nevada, and the 14th most populous county in the United States. It covers 7% of the state's land area but holds 73% of the state's population, making Nevada one of the most centralized states in the United States.

With jurisdiction over the world-famous Las Vegas Strip and covering an area the size of New Jersey, Clark County is the nation's 14th-largest county. The County is a mix of urban and rural locales that offers the convenience of city living with access to some of the nation's best outdoor recreational areas just a short drive away.

Clark County employs more than 10,000 people over 38 departments. The County has an annual budget of \$11.4 billion, which surpasses that of the state government.

## Quick Facts

±7,892

Land Area  
(Square Miles)

2,265,461

Population

298

Pop. Density  
(Per Square Mile)

Sources: [clarkcountynv.gov](http://clarkcountynv.gov), [data.census.gov](http://data.census.gov), [lvgea.org](http://lvgea.org), [wikipedia.com](http://wikipedia.com)

## Market Overview




## Synopsis

The City of Henderson is nestled among three of the most renowned man-made attractions – the neon of Vegas, the engineering marvel of the Hoover Dam and the tranquil beauty of Lake Mead. As a vibrant and inviting residential and business community, Henderson offers an abundance of cultural events, special attractions, miles of trails and open spaces, and outstanding recreational facilities, as well as renowned resorts, restaurants and shopping.


Discover a wealth of advantages in Henderson, beginning with a culture of opportunity fueling your success with faster access. Lower cost. Higher skills. Greater quality.

Henderson is one of the fastest growing cities in Nevada, offering a nationally acclaimed quality of life, Henderson continually attracts young energetic talent to the region, while a robust training ecosystem develops and delivers workforce skills aligned to industry needs.

## Quick Facts

 **±106**  
Size (Sq. Mi.)

 **317,610**  
Population

 **2,984**  
Pop. Density (Per Sq. Mi.)

Source: [www.wikipedia.com](http://www.wikipedia.com)

Source: [www.hendersonnow.com](http://www.hendersonnow.com)

  
Service you deserve. People you trust.

  
MEMBER | PARTNER



5960 South Jones Boulevard  
Las Vegas, Nevada 89118

T 702.388.1800 | F 702.388.1010  
[www.mdlgroup.com](http://www.mdlgroup.com)



# Professional Sports



## Synopsis

The Las Vegas metropolitan area is home to many sports, most of which take place in the unincorporated communities around Las Vegas rather than in the city itself.

The Las Vegas Valley has four major league professional teams: the Vegas Golden Knights of the NHL (began play in 2017 as the region's first major pro team), the Las Vegas Raiders of the NFL (began play in 2020), the Las Vegas Aces of the WNBA (began play in 2018), and the Las Vegas Athletics of the MLB (inaugural season will commence at its new ballpark for the 2028 season).

Las Vegas is home to three minor league sports teams: the Las Vegas Aviators of Minor League Baseball, The Las Vegas Lights FC of the USL Championship, the league at the second of US men soccer league system, The Henderson Silver Knights of the American Hockey league of the NHL. The Las Vegas Lights are currently the only team playing in the city of Las Vegas, at the city-owned Cashman Field.

Source: [www.wikipedia.com](http://www.wikipedia.com)



# Nevada Tax Advantages

## NEVADA

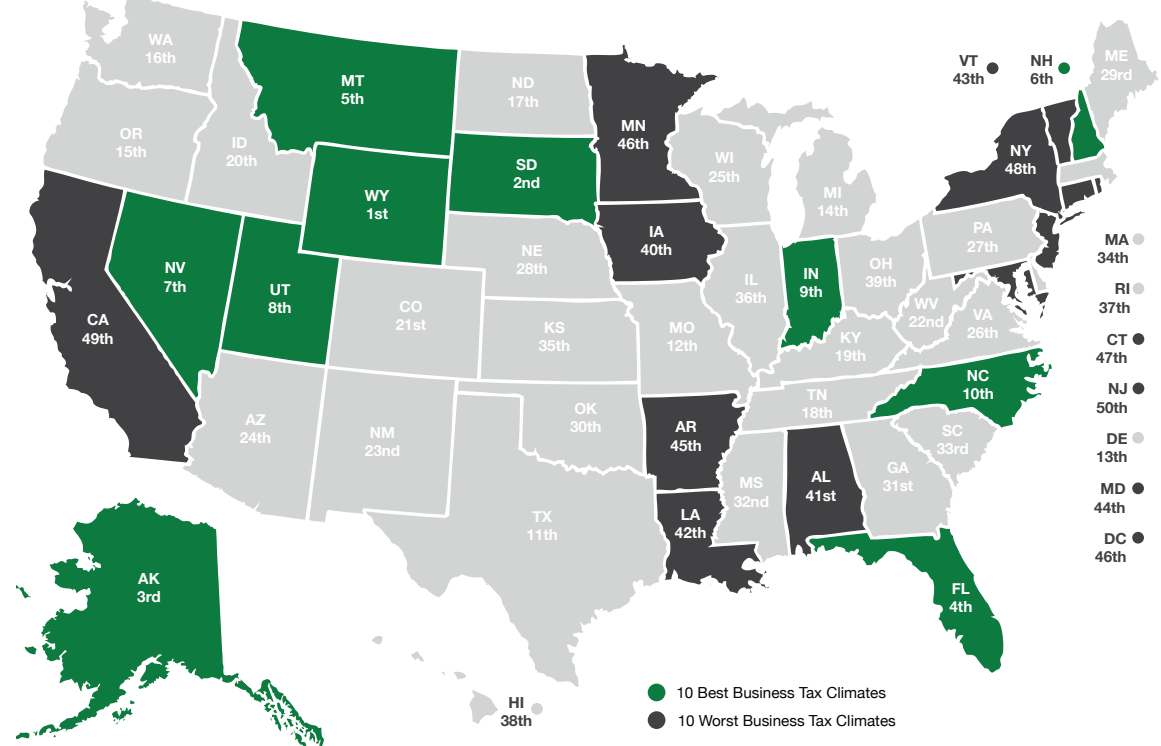
has always been a popular choice for businesses due to various factors such as low-cost startup, regulatory benefits, and competitive utility rates.

The Tax Climate Index ranking  
California ranks 48th, Arizona 14th,  
Idaho 16th, Oregon 28th and Utah 8th.

### Here are the main tax advantages of this state:

- No income tax
- No tax on pensions
- No tax on social security
- No tax on estate or inheritance
- Low property taxes
- No gross receipts tax
- No franchise tax
- No inventory tax
- No tax on issuance of corporate shares
- No tax on sale or transfer of shares

## 2024 State Business Tax Climate Index



## Nevada Tax System:

Nevada is ranked 7th in the Tax Foundation's 2020 State Business Tax Climate Index, focusing on corporate taxes, individual income taxes, sales taxes, unemployment insurance taxes, and property taxes.

**Source:** Nevada Governor's Office of Economic Development;  
[www.TaxFoundation.org](http://www.TaxFoundation.org)



### Road Transportation

Las Vegas, and surrounding towns are less than one day's drive over arterial interstate highways to nearly 60 million consumers as well as to the major U.S. deep water seaports serving the Pacific Rim.



### Rail Transportation

Major Union Pacific and Southern Pacific rail connections in Las Vegas and Reno also, too, play an essential role in carrying the world's freight from the Pacific Coast to America's Heartland and beyond.



### Air Transportation

Globally, Harry Reid International Airport in Las Vegas has been a Top 20 airport for more than five years, annually serving more than 40 million and handling more than 189 million pounds of cargo.



Service you deserve. People you trust.



5960 South Jones Boulevard  
Las Vegas, Nevada 89118

T 702.388.1800 | F 702.388.1010  
[www.mdlgroup.com](http://www.mdlgroup.com)



# Southern Nevada Growth

200,000+

Number of jobs  
added between  
2011 and 2019.

7,500+

Number of new  
businesses added  
between 2011 and 2019.

85%

Milestone graduation  
rate for Clark County  
school district in 2019.



## Education & Workforce Development

Southern Nevada's post-secondary education and training institutions have significantly increased their offerings.

Notably, the **University of Nevada, Las Vegas (UNLV)** doubled its research and development (R&D) performance over the last decade and reached R1 status in 2018, the highest classification for research universities. Additionally, the newly formed UNLV School of Medicine started class in 2017.

**Nevada State College (NSC)** more than double its degree awards since 2011, with especially strong growth in awards to racial and ethnic minorities, and in health professions that support a key regional target industry.

**The College of Southern Nevada (CSN)** was named as a Leader College of Distinction by national non-profit network Achieving the Dream in 2019 for its work on improving student outcomes and reducing student achievement gaps.

## Innovation Ecosystem

In 2016, Las Vegas established an Innovation District to spur smart-city technology infrastructure and launched the International Innovation Center @ Vegas (IIC@V) incubator to support development of high priority emerging technologies.

The Las Vegas-based Nevada Institute for Autonomous Systems was designated in 2013 as one of six official unmanned aircraft systems (UAS) test sites in the United States, and the UNLV Tech Park has quickly emerged as a hub for regional innovation.

In July 2019, Google broke ground on a \$600 million data center, and in October 2019 Switch announced a partnership with UNLV to support sports science R&D. Switch also expanded its footprint in Southern Nevada to 4.6M SF of data center space.

The Las Vegas Convention and Visitors Authority (LVCVA) partnered with the Boring Company to build a high-speed electric autonomous people mover for the Las Vegas Convention Center.

*Source: Las Vegas Global Economic Alliance (LVGEA)*



# Transit from Las Vegas

Destination	Est. Travel Time	Distance (Mi)
Los Angeles, CA	3 hrs, 55 min	265
Phoenix, AZ	4 hrs, 40 min	300
San Diego, CA	4 hrs, 45 min	327
Salt Lake City, UT	5 hrs, 50 min	424
Reno, NV	6 hrs, 55 min	452
San Francisco, CA	8 hrs, 15 min	565
Boise, ID	9 hrs, 30 min	634
Santa Fe, NM	9 hrs, 10 min	634
Denver, CO	10 hrs, 45 min	752
Cheyenne, WY	11 hrs, 50 min	837
Helena, MT	12 hrs, 55 min	907
Portland, OR	15 hrs, 45 min	982
Seattle, WA	16 hrs, 50 min	1,129



## Shipping and Mailing Services



**FedEx.**



Freight Service Center  
3 Mi

Freight Center  
3 Mi

Customer Service Center  
5 Mi

Distribution Center  
10 Mi

Ship Center  
8 Mi

Cargo Center  
3 Mi

UPS Air Cargo  
18 Mi

Air Cargo  
20 Mi

--



Service you deserve. People you trust.



5960 South Jones Boulevard  
Las Vegas, Nevada 89118

T 702.388.1800 | F 702.388.1010  
www.mdlgroup.com