



AIRLINE PARK SHOPPING CENTER

Metairie, Louisiana

Airline Park Shopping Center is a 53,380 square foot neighborhood shopping center located in Metairie, Louisiana, at the northeast corner of Airline Drive (Highway 61) and Airline Park Boulevard, four miles from the Louis Armstrong International Airport.



\$82,031

AVERAGE HOUSEHOLD INCOME

Primary Trade Area

CENTER PROFILE

Total Square Feet	53,380
Number of Stores/Services	7
Number of Levels	1
Number of Parking Spaces	295

MAJOR TENANTS

Family Dollar	13,838 SF
Harbor Freight	14,494 SF
Dollar Tree	10,896 SF

MARKET DEMOGRAPHICS

1 Mile

Population	14,190
Number of Households	6,232
Average Household Income	\$77,036

3 Mile

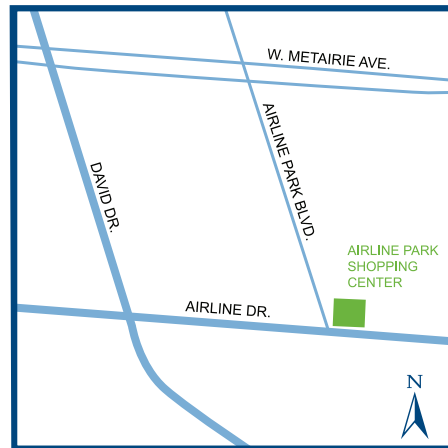
Population	129,909
Number of Households	55,954
Average Household Income	\$77,651

5 Mile

Population	245,112
Number of Households	102,937
Average Household Income	\$82,031

Daily Vehicle Count

Airline Highway	34,638
-----------------	--------



AIRLINE PARK SHOPPING CENTER
6125-6425 Airline Drive
Metairie, LA 70003

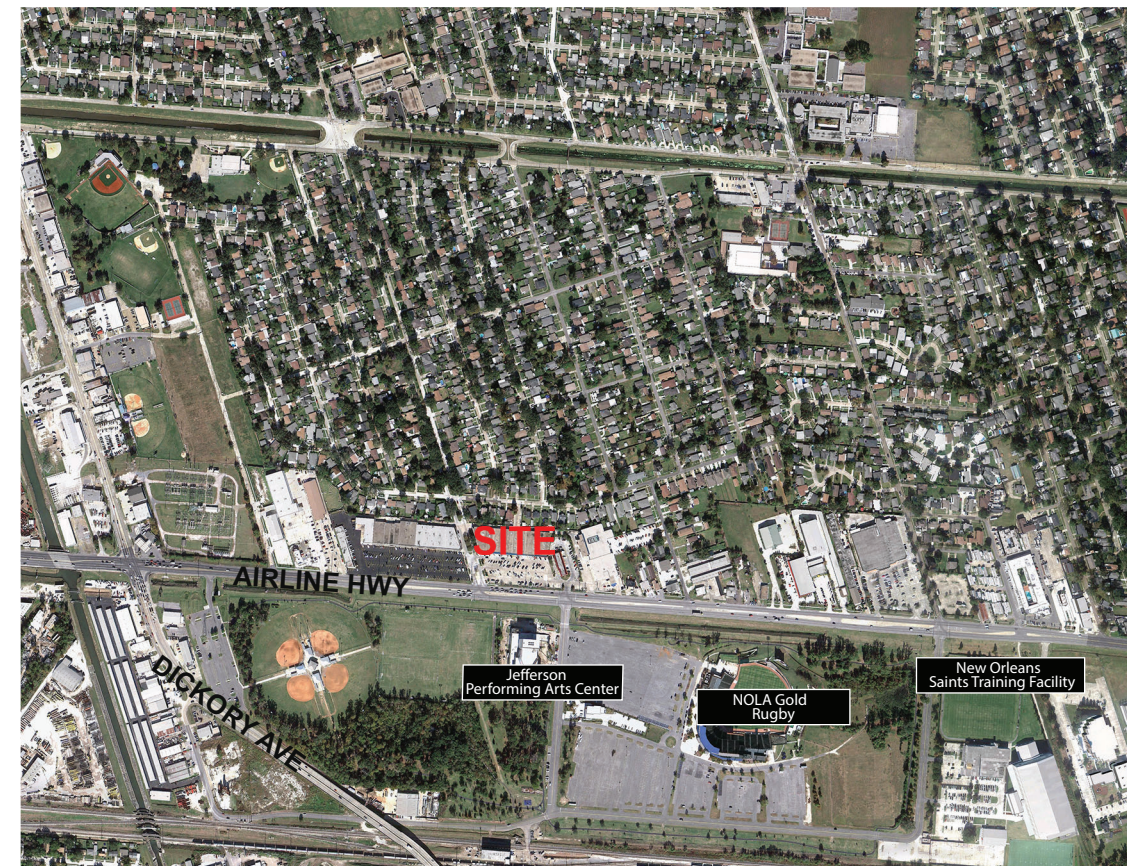
AIRLINE PARK SHOPPING CENTER

TENANT LIST

RESTAURANT/FOOD	
CiCi's Pizza	6311
McDonald's	6309
Subway	6415

SERVICES	
H&R Block	6421

MAJOR TENANTS	
Dollar Tree	6315
Family Dollar	6425
Harbor Freight	6409



LEASING INQUIRIES

Morguard Management Company Inc.
6305 Airline Drive, Metairie, LA 70003
Phone 504-904-8546
Amanda Punch-Gill Apunchgill@morguard.com
morguard.com



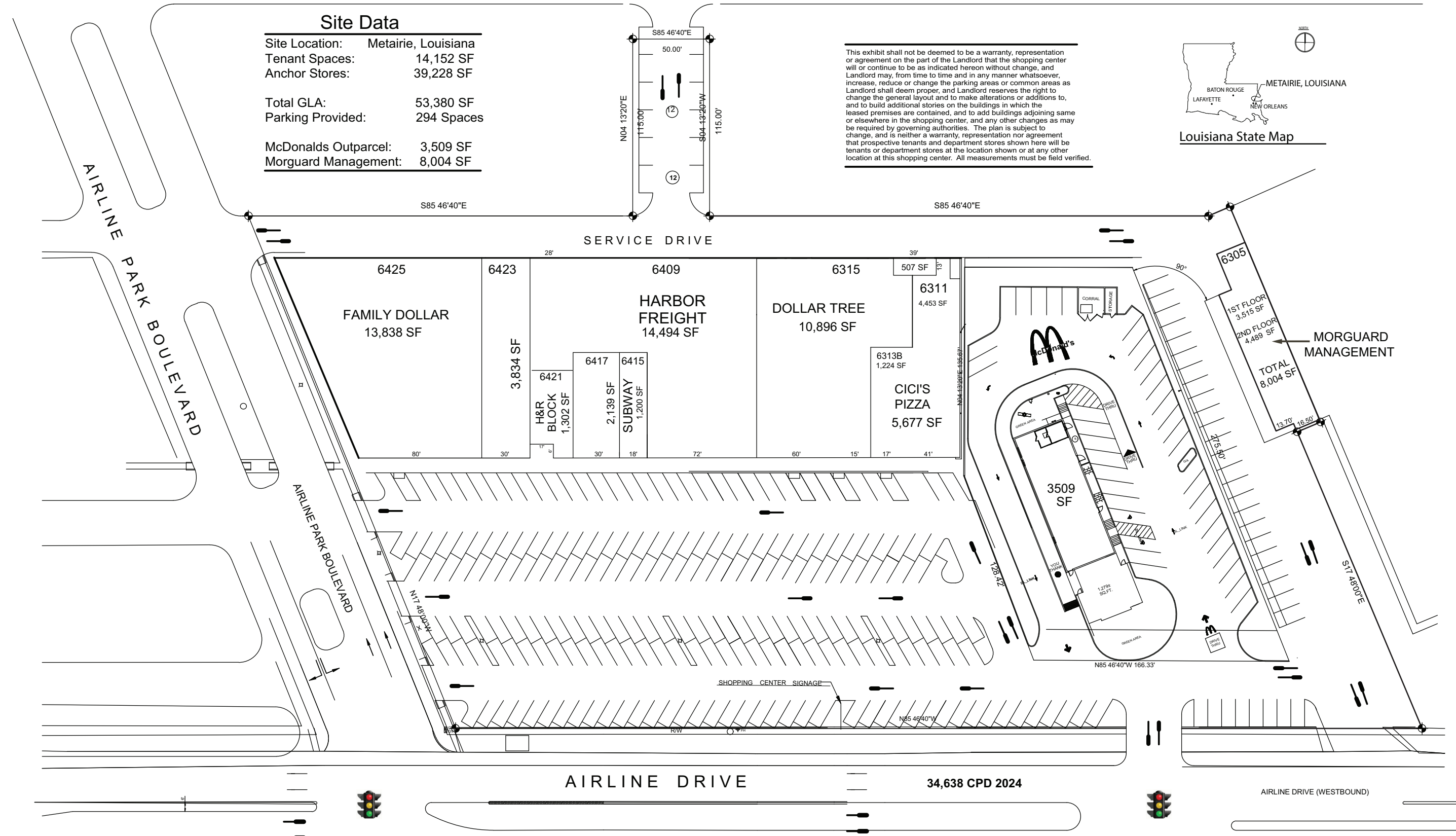
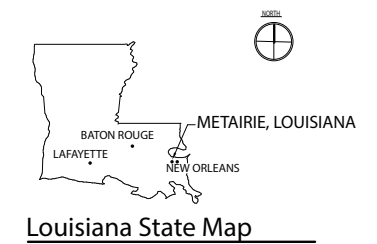
Real Estate Potential. Realized.

AIRLINE PARK SHOPPING CENTER

Site Data	
Site Location:	Metairie, Louisiana
Tenant Spaces:	14,152 SF
Anchor Stores:	39,228 SF
Total GLA:	53,380 SF
Parking Provided:	294 Spaces
McDonalds Outparcel:	3,509 SF
Morguard Management:	8,004 SF

MITCHELL STREET

This exhibit shall not be deemed to be a warranty, representation or agreement on the part of the Landlord that the shopping center will or continue to be as indicated hereon without change, and Landlord may, from time to time and in any manner whatsoever, increase, reduce or change the parking areas or common areas as Landlord shall deem proper, and Landlord reserves the right to change the general layout and to make alterations or additions to, and to build additional stories on the buildings in which the leased premises are contained, and to add buildings adjoining same or elsewhere in the shopping center, and any other changes as may be required by governing authorities. The plan is subject to change, and is neither a warranty, representation nor agreement that prospective tenants and department stores shown here will be tenants or department stores at the location shown or at any other location at this shopping center. All measurements must be field verified.



AIRLINE DRIVE

34,638 CPD 2024

AIRLINE DRIVE (WESTBOUND)

AIRLINE DRIVE (EASTBOUND)