

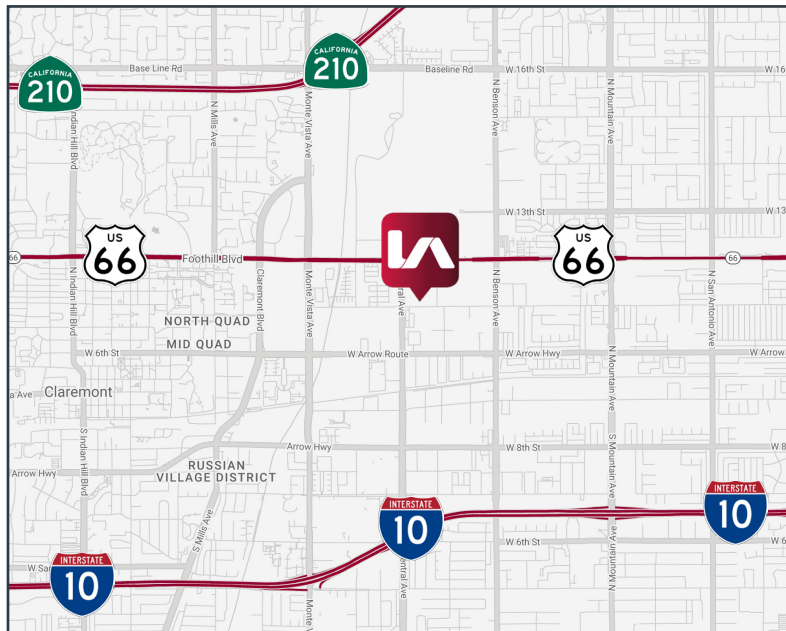
FOR SALE | ±12,000 SF OF INDUSTRIAL SPACE

1953 W 11TH STREET
UPLAND, CA 91786



PROPERTY FEATURES

- Freestanding Industrial Building for sale
- Large ±0.79 Acre Lot
- Approximately ±4,800 SF of office space
- Large fenced private yard area
- Power: 200A; 120/240V
- 9' - 15' Clear Height
- Recent improvements completed
- 3 ground level doors
- Excellent owner user opportunity
- Asking Price \$4,100,000
- 10% SBA loan possible



FOR MORE INFORMATION PLEASE CONTACT:

Greg Martin

Senior Vice President

D 909.373.2904

gmartin@lee-assoc.com

DRE #01001749

Neil Ridens

Associate

D 909.373.2717

nridens@lee-assoc.com

DRE #02106181

Lee & Associates® - Ontario

3535 Inland Empire Blvd, Ontario, CA 91764 | 909.989.7771 | lee-assoc.com
Corp ID 00976995

All information furnished regarding property for sale, rental or financing is from sources deemed reliable, but no warranty or representation is made to the accuracy thereof and same is submitted to errors, omissions, change of price, rental or other conditions prior to sale, lease or financing or withdrawal without notice. No liability of any kind is to be imposed on the broker herein.

FOR SALE | ±12,000 SF OF INDUSTRIAL SPACE

1953 W 11TH STREET
UPLAND, CA 91786



AERIAL



FOR MORE INFORMATION PLEASE CONTACT:

Greg Martin
Senior Vice President
D 909.373.2904
gmartin@lee-assoc.com
DRE #01001749

Neil Ridens
Associate
D 909.373.2717
nridens@lee-assoc.com
DRE #02106181

Lee & Associates® - Ontario
3535 Inland Empire Blvd, Ontario, CA 91764 | 909.989.7771 | lee-assoc.com
Corp ID 00976995

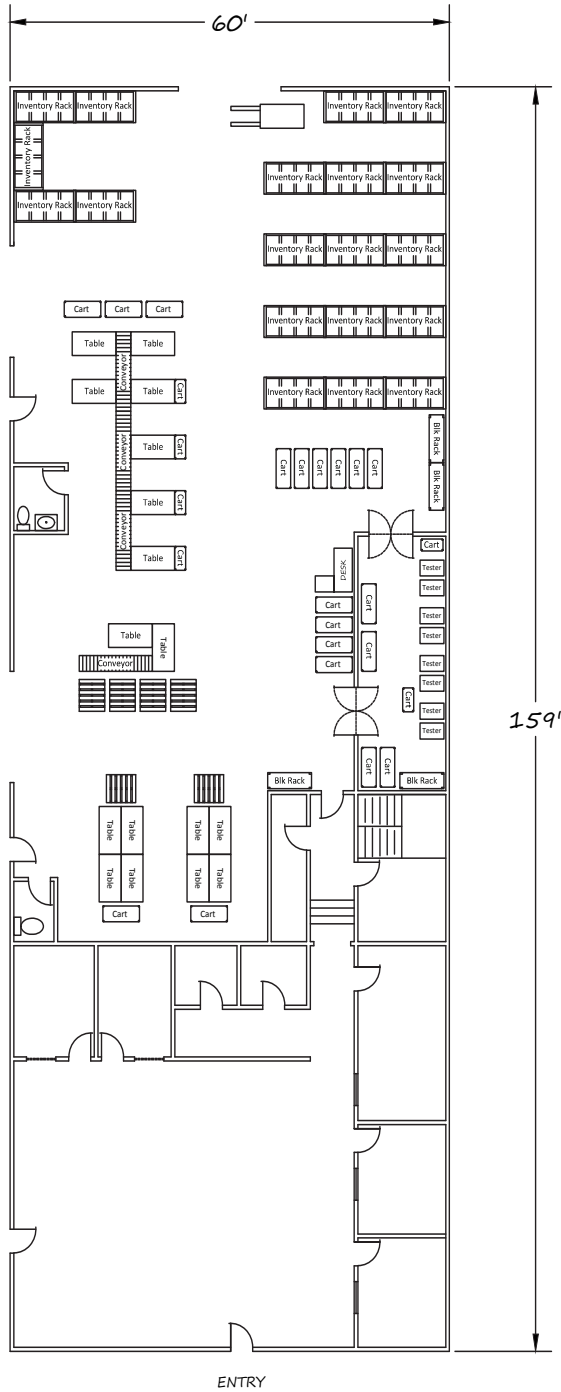
All information furnished regarding property for sale, rental or financing is from sources deemed reliable, but no warranty or representation is made to the accuracy thereof and same is submitted to errors, omissions, change of price, rental or other conditions prior to sale, lease or financing or withdrawal without notice. No liability of any kind is to be imposed on the broker herein.

FOR SALE | ±12,000 SF OF INDUSTRIAL SPACE

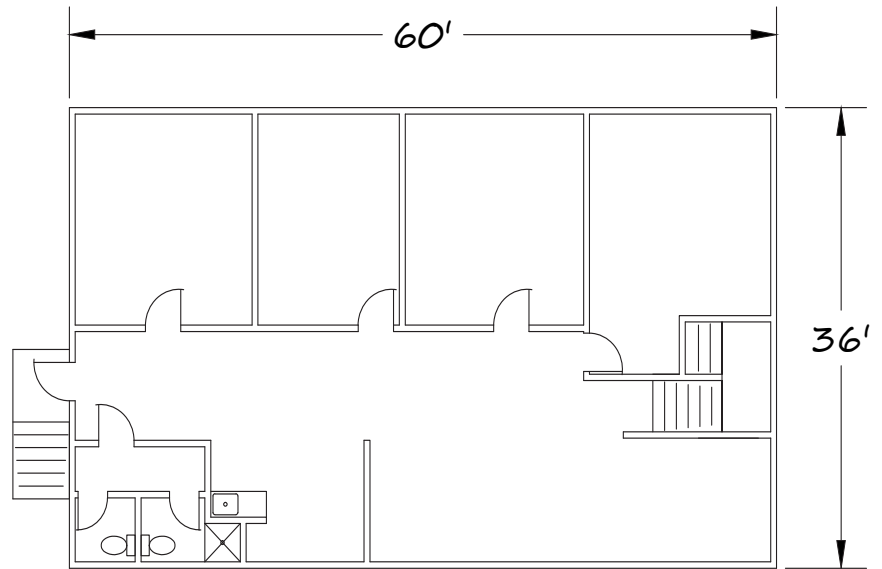
1953 W 11TH STREET
UPLAND, CA 91786

FLOOR PLAN

1st FLOOR



2nd FLOOR



FOR MORE INFORMATION PLEASE CONTACT:

Greg Martin

Senior Vice President

D 909.373.2904

gmartin@lee-assoc.com

DRE #01001749

Neil Ridens

Associate

D 909.373.2717

nridens@lee-assoc.com

DRE #02106181

Lee & Associates® - Ontario

3535 Inland Empire Blvd, Ontario, CA 91764 | 909.989.7771 | lee-assoc.com
Corp ID 00976995

All information furnished regarding property for sale, rental or financing is from sources deemed reliable, but no warranty or representation is made to the accuracy thereof and same is submitted to errors, omissions, change of price, rental or other conditions prior to sale, lease or financing or withdrawal without notice. No liability of any kind is to be imposed on the broker herein.