

# 9 PARK PLACE

Swansea, IL 62226



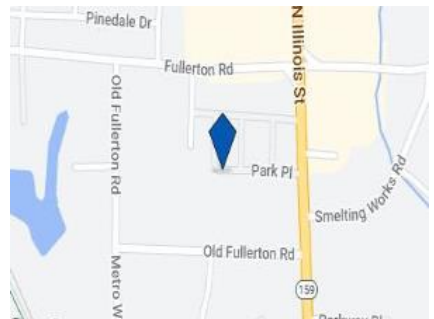
## 2,977 RSF MEDICAL/OFFICE for LEASE

### PROPERTY OVERVIEW

- 2,977 SF Medical / Office Building for Lease
- 6 offices, 3 exam rooms, lab, 2 conference rooms, break room, file & printer rooms
- No Steps or Stairs
- Adequate Parking
- Close proximity to retail, restaurants, and both new hospitals (St. Elizabeth and Memorial Hospital East)
- Part of Park Place Office Park located in Swansea, IL

### LEASE PRICE

\$16/SF Gross



**W P WITTENAUER**  
P R O P E R T I E S<sup>®</sup>

The information contained herein has been given to us by the owner of the property or other sources that we deem reliable. We have no reason to doubt its accuracy, but we do not guarantee it. All information should be verified prior to lease or purchase.

# 9 PARK PLACE

Swansea, IL 62226



Waiting Area



Executive Office



Lab Room



Copy / File Room

# 9 PARK PLACE

Swansea, IL 62226



Bathroom



Kitchen / Break Room



Exam Room



Conference Room

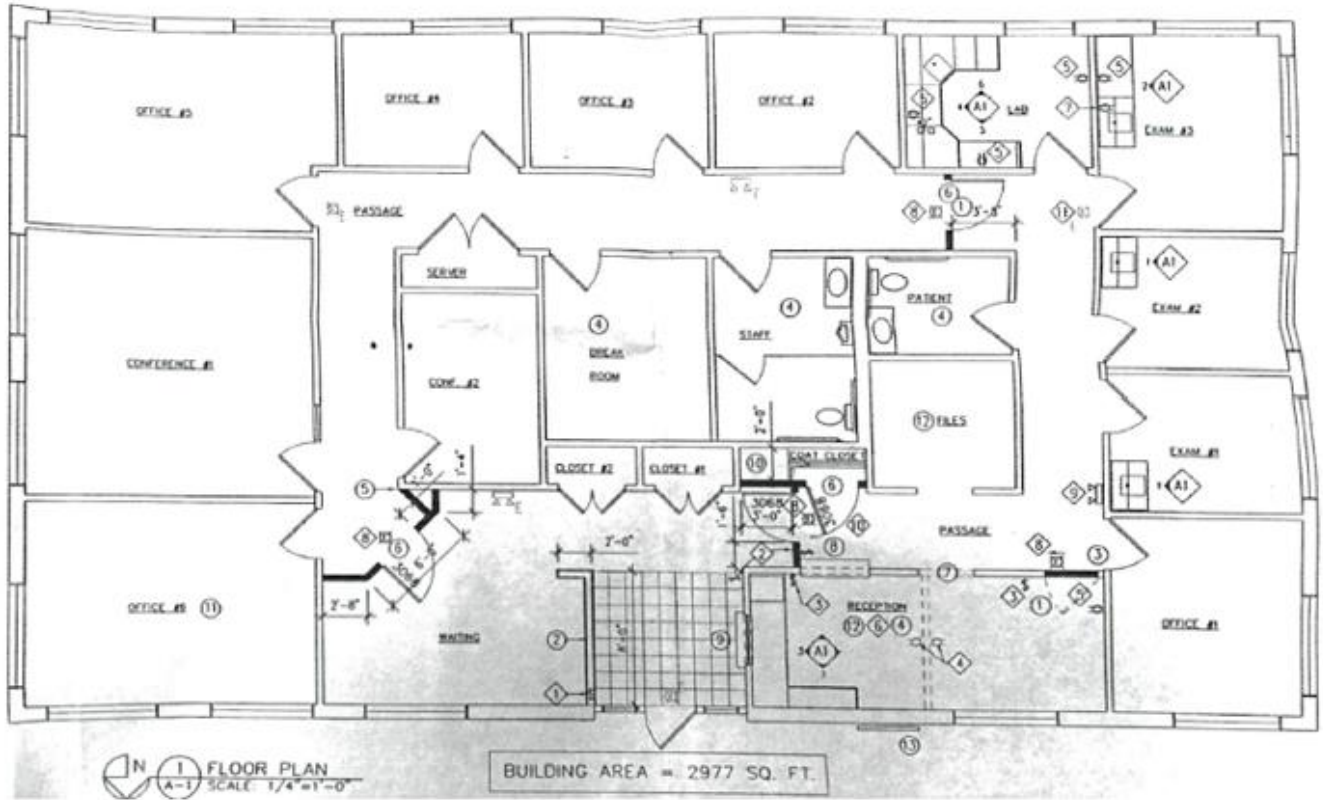


Swansea, IL 62226



# 9 PARK PLACE

Swansea, IL 62226



## FOR INFO, PLEASE CONTACT:

### **Brandon Perjak**

Associate Broker

Office: 618.632.5850 Direct: 618.632.0158

Email: [brandon@wittenauerproperties.com](mailto:brandon@wittenauerproperties.com)

[www.wittenauerproperties.com](http://www.wittenauerproperties.com)

### **David Wittenauer**

Designated Managing Broker

Office: 618.632.5850 | Fax: 618.632.3270

Email: [david@wittenauerproperties.com](mailto:david@wittenauerproperties.com)

[www.wittenauerproperties.com](http://www.wittenauerproperties.com)