

ARAPAHOE CORPORATE PARK I

**NEW SPEC SUITES AND COMMON AREA CONFERENCE/
BREAK ROOM NOW COMPLETE**

ONLY TWO SUITES REMAINING!



12503
E. EUCLID DRIVE
SECOND FLOOR
CENTENNIAL, CO 80111



FULLY UPGRADED EXTERIOR, LOBBY, COMMON AREAS, AND RESTROOMS



Arapahoe Corporate Park I has been completely renovated, making it one of the most upgraded office buildings in the area. The building offers Class A type finishes throughout at a value lease rate and features an extensive glass line, balconies, high ceilings, and abundant parking. Numerous restaurants, parks and retail amenities are nearby.



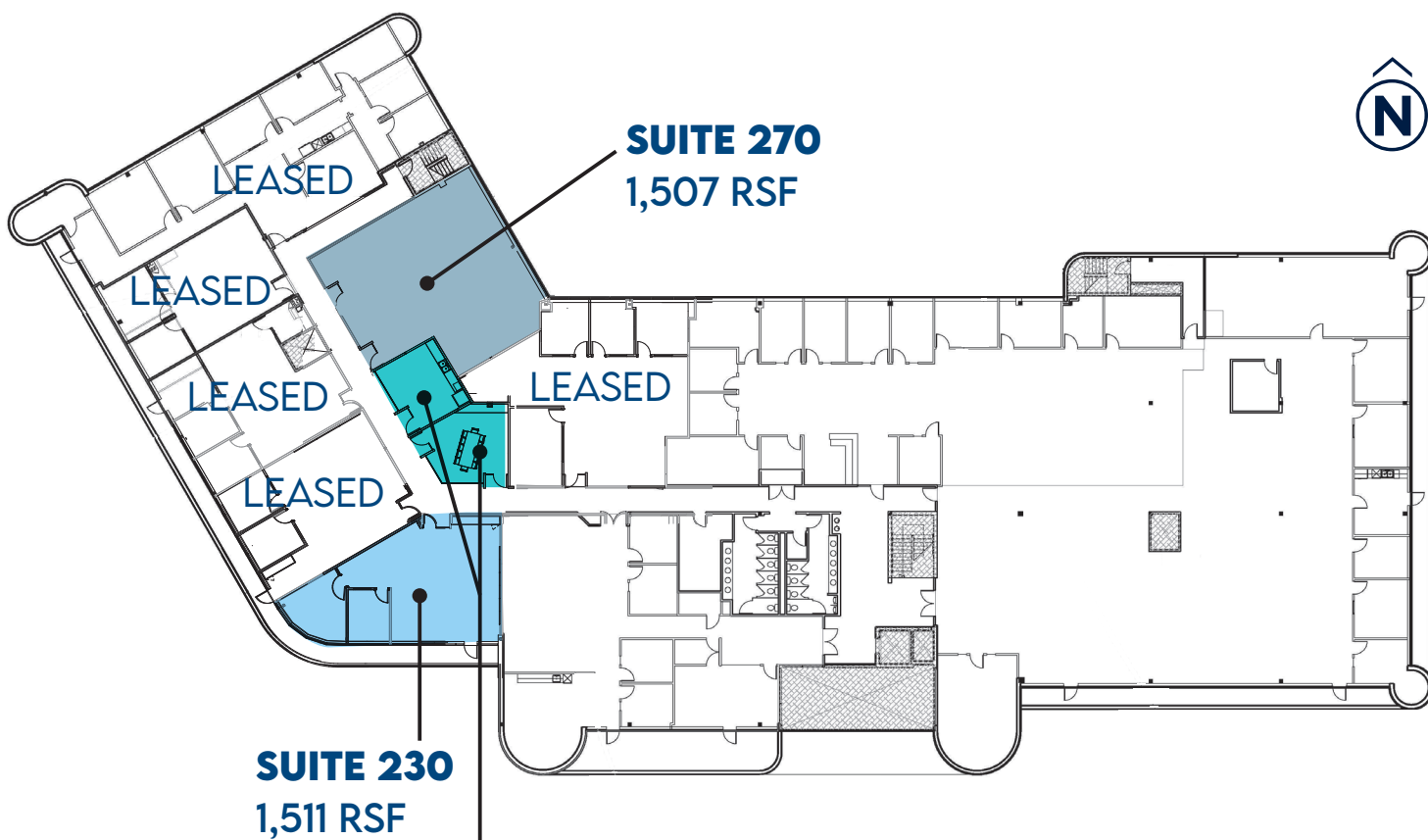
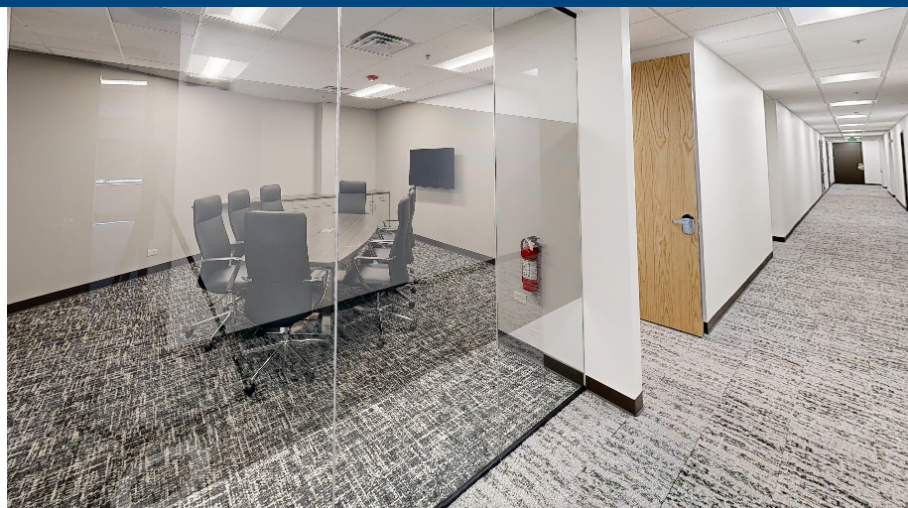
JEREMY REEVES
+1 303 283 1375
jeremy.reeves@colliers.com

CODY SHEESLEY
+1 303 309 3520
cody.sheesley@colliers.com

NICK RICE
+1 720 833 4620
nick.rice@colliers.com



AVAILABLE SUITES



**NEW COMMON AREA
BREAKROOM AND
CONFERENCE ROOM**



**VIRTUAL
TOUR**

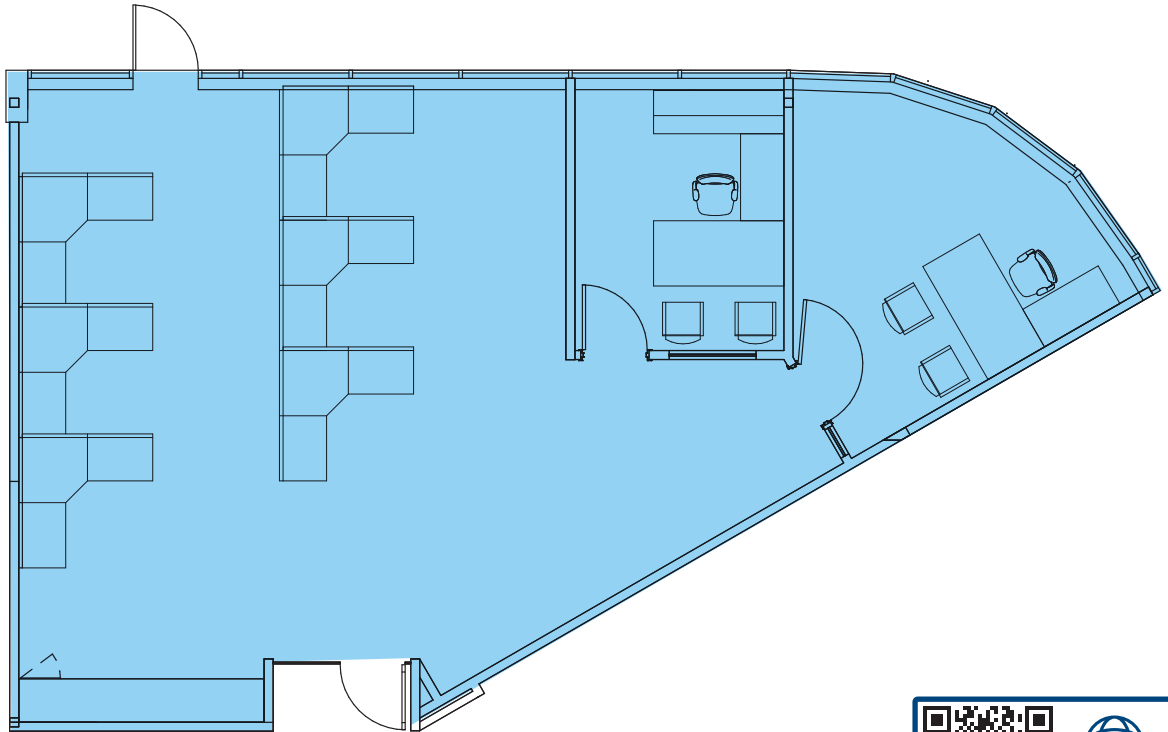




COMPLETED SPEC SUITE

SUITE 230

1,511 RSF

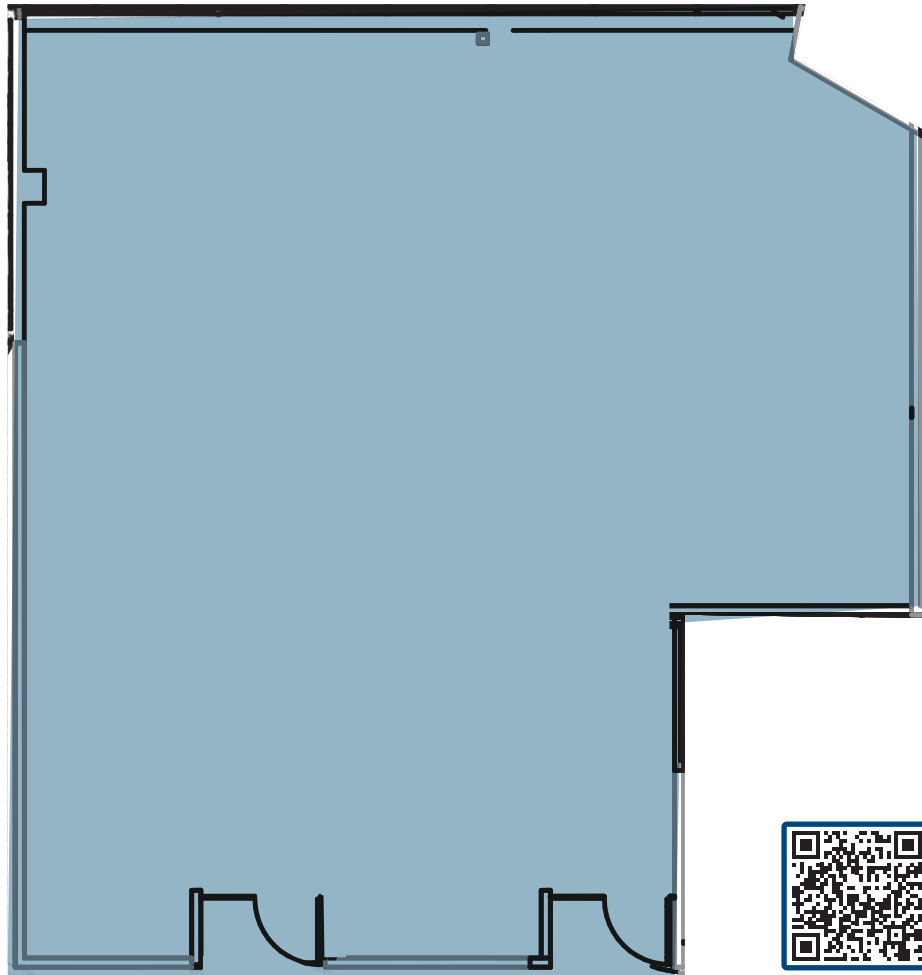




COMPLETED SPEC SUITE

SUITE 270

1,507 RSF



12503 E. EUCLID DRIVE • SECOND FLOOR | CENTENNIAL, CO 80111



COLLIERS DENVER
4643 S. Ulster Street | Suite 1000 | Denver, CO 80237
+1 303 745 5800 fax +1 303 745 5888 | colliers.com/denver



This communication has been prepared by Colliers Denver for advertising and/or general information only. Colliers Denver makes no guarantees, representations or warranties of any kind, expressed or implied, regarding the information including, but not limited to, warranties of content, accuracy and reliability. Any interested party should undertake their own inquiries as to the accuracy of the information. Colliers Denver excludes unequivocally all inferred or implied terms, conditions and warranties arising out of this document and excludes all liability for loss and damages arising there from. This publication is the copyrighted property of Colliers Denver and/or its licensor(s). © 2025. All rights reserved. This communication is not intended to cause or induce breach of an existing listing agreement.