

2508 232nd Street, Langley, BC

Highlights

- ▶ 14.98-acre RU-3 Site
- ▶ 7,490 SF, 5-bed, 6-bath single family house
- ▶ 1,376 SF, 2-bed, 2-bath single family house
- ▶ 1,470 SF, 2-bed, 1-bath cottage/workshop
- ▶ 2,976 SF barn with loft suite
- ▶ Approximately 12 acres currently utilized for blueberry cultivation

Gary Haukeland*
Senior Vice President
604 691 6693
ghaukeland@naicommercial.ca

*Personal Real Estate Corporation

J-D Murray
Senior Associate
604 691 6664
jdmurray@naicommercial.ca

NAI Commercial
1075 W Georgia St, Suite 1300
Vancouver, BC V6E 3C9
+1 604 683 7535
naicommercial.ca



2508 232nd Street Langley, BC

The Opportunity

The property represents an opportunity to purchase a regularly shaped 14.98-acre agricultural site, zoned RU-3. The property is improved with a 7,490 SF single family detached house, a second 1,376 SF house, a 1,410 SF cottage/workshop, and a 2,976 SF workshop/barn with loft suite. The property was most recently utilized as a blueberry farm, where approximately 12 acres were planted with 3 varieties of berries - Duke, Bluecrop and Elliot - producing approximately 50,000 to 55,000 kilograms per year. The property is within the Agricultural Land Reserve.

Location

The property is located on the east side of 232nd Street, north of 24th Avenue within the Township of Langley. The property is 5-minutes to the Fraser Highway, with access to the rest of the Lower Mainland, Greater Vancouver, and all amenities.

Gary Haukeland*
Senior Vice President
604 691 6693
ghaukeland@naicommercial.ca
*Personal Real Estate Corporation

J-D Murray
Senior Associate
604 691 6664
jdmurray@naicommercial.ca

No warranty or representation, express or implied, is made as to the accuracy of the information contained herein, and the same is submitted subject to errors, omissions, change of price, rental or other conditions, prior sale, lease or financing, or withdrawal without notice, and of any special listing conditions imposed by our principals no warranties or representations are made as to the condition of the property or any hazards contained therein are any to be implied. Aerial image(s) courtesy of Google, Landsat/Copernicus

Property Details

Civic Address
2508 232nd Street
Langley, BC V2Z 3B5W4

Legal Description
Lot 37 Section 21 Township 10 New
Westminster District Plan 50036

PID
003-956-296

Property Taxes
\$13,103.10 (2025)

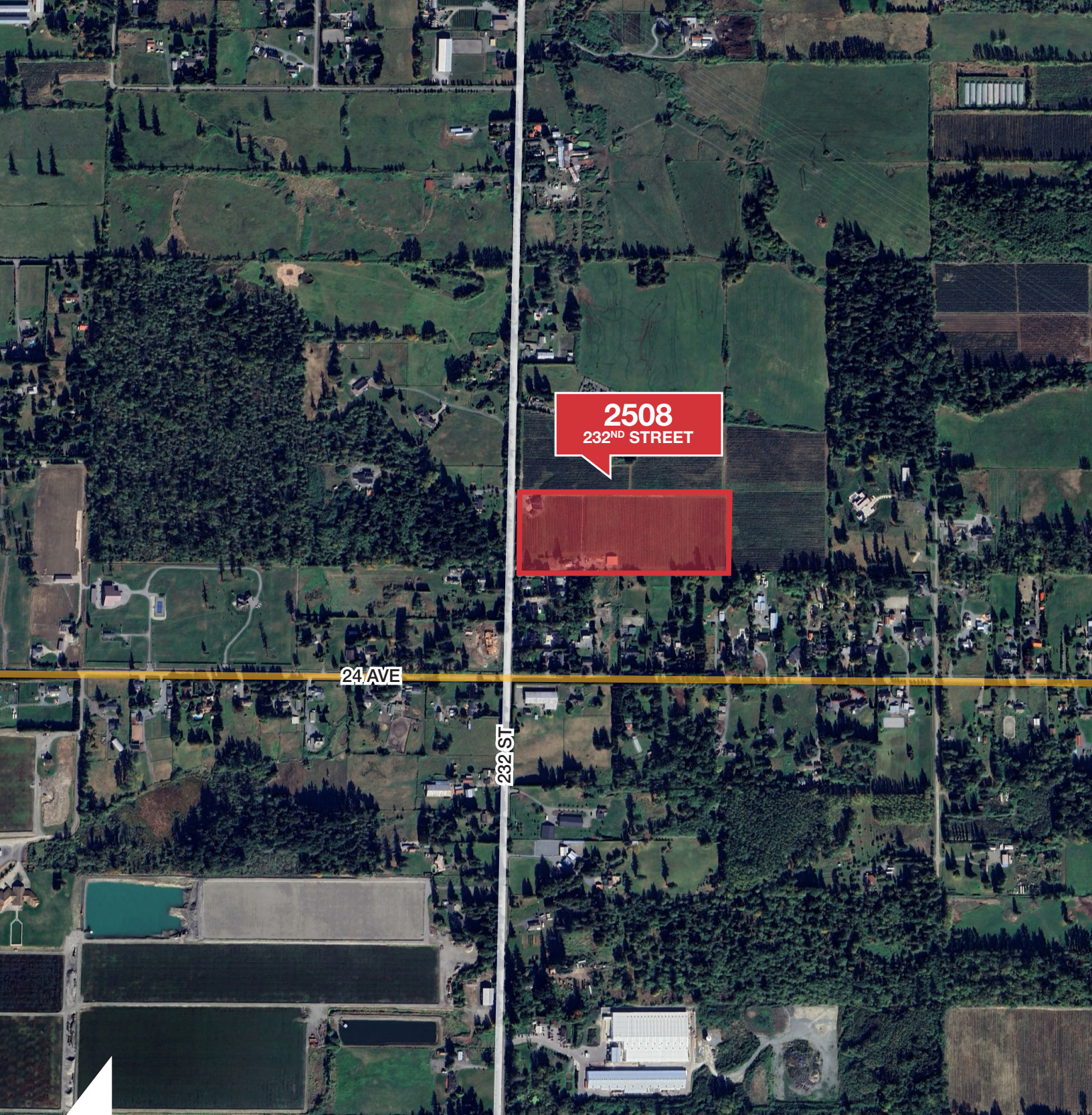
Zoning & OCP Designation
RU-3 (Rural Zone Three), allowing for
various agricultural and residential uses.

Price
\$3,995,000

NAI Commercial

NAI Commercial
1075 W Georgia St, Suite 1300
Vancouver, BC V6E 3C9
+1 604 683 7535
naicommercial.ca





Gary Haukeland*, Senior Vice President
604 691 6693 | ghaukeland@naicommercial.ca
*Personal Real Estate Corporation

J-D Murray, Senior Associate
604 691 6664 | jdmurray@naicommercial.ca

NAI Commercial

No warranty or representation, express or implied, is made as to the accuracy of the information contained herein, and the same is submitted subject to errors, omissions, change of price, rental or other conditions, prior sale, lease or financing, or withdrawal without notice, and of any special listing conditions imposed by our principals no warranties or representations are made as to the condition of the property or any hazards contained therein are any to be implied. Aerial image(s) courtesy of Google, Landsat/Copernicus

NAI Commercial
1075 W Georgia St, Suite 1300
Vancouver, BC V6E 3C9
+1 604 683 7535
naicommercial.ca