



**MARTIN
COMMERCIAL
GROUP**
Commercial Real Estate Services

AVAILABLE FOR LEASE

9,512 SQ. FT. INDUSTRIAL BUILDING



2209-2213 Business Way, Riverside, CA

RUSSELL STREET BUSINESS CENTER

- Freeway Signage Available
- Fenced Yard
- Offices w/Warehouse
- Fully Air Conditioned Offices
- Mezzanines Offices
- G/L Loading Doors
- Skylight(s)
- Ample Parking
- Professionally Landscaped
- Professionally Managed Complex
- Easy Access to 60, 91 & 215 Fwys.

The information contained herein has been obtained from sources we deem reliable. While we have no reason to doubt its accuracy, we do not guarantee it.



**For More Information
Please Contact:**

ERIN LAGOMARSINO

elagomarsino@mcgre.com
DRE # 00992436

951.684.1251

*Since 1953...
Orange County ~ Inland Empire*



MARTIN
COMMERCIAL
GROUP

Commercial Real Estate Services



For More Information
Please Contact:

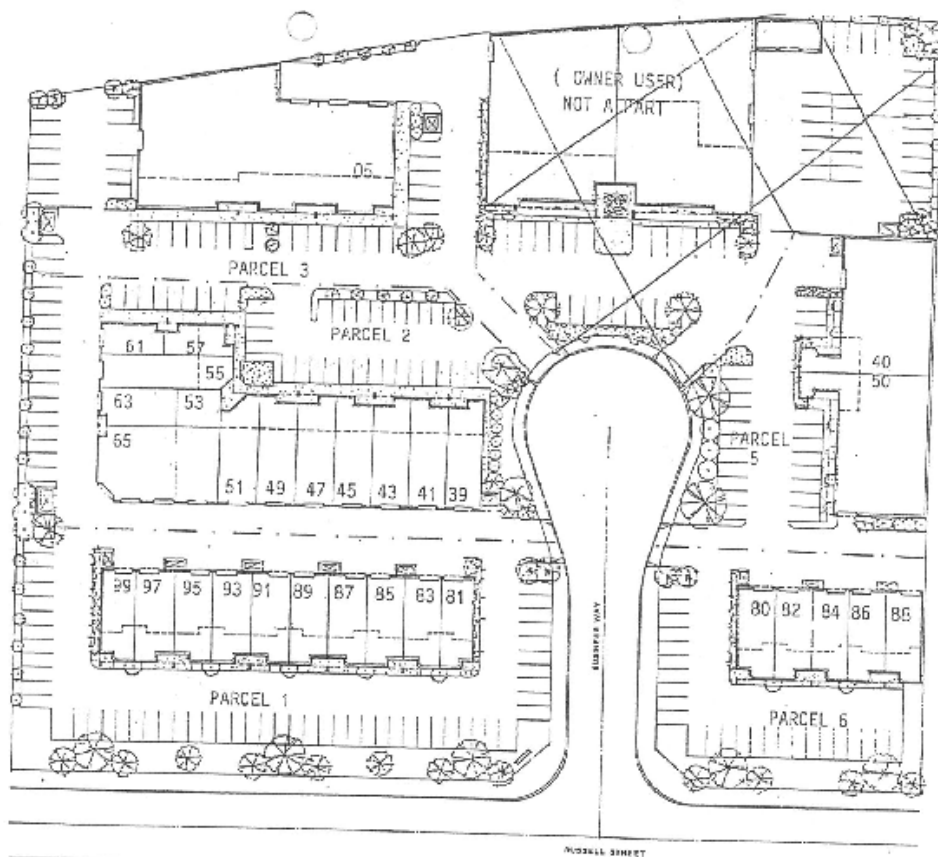
ERIN LAGOMARSINO

elagomarsino@mcgre.com
DRE # 00992436

951.684.1251

*Since 1953...
~Orange County~
Inland Empire*

RUSSELL STREET BUSINESS CENTER



WWW.MCGRE.COM

CORPORATE OFFICE: 1495 E. WARNER AVENUE ~ SANTA ANA, CA 92705
Orange County: 714.241.1141 FAX 714.241.0847
Inland Empire: 951.684.1251 FAX 951.684.9041