

# LAB SPACE AVAILABLE

4025 BOHANNON DR, MENLO PARK, CA

*±15,105 SF Lab Space Available  
For Lease in Menlo Park*

Multiple lab and tissue culture suites

One (1) chemical fume hood

60 KW backup generator

Multiple bio safety cabinets

Great mix of private offices, open areas and  
conference rooms

Potential expansion into ±37,808 SF lab building  
currently under construction located next door

Asking Rent: \$4.95 NNN

**JOE CAMMARATA**

650.678.1228 | [joe.cammarata@kidder.com](mailto:joe.cammarata@kidder.com)

LIC N° 01366451

**ERIC DEBRINE**

650.465.8721 | [eric.debrine@kidder.com](mailto:eric.debrine@kidder.com)

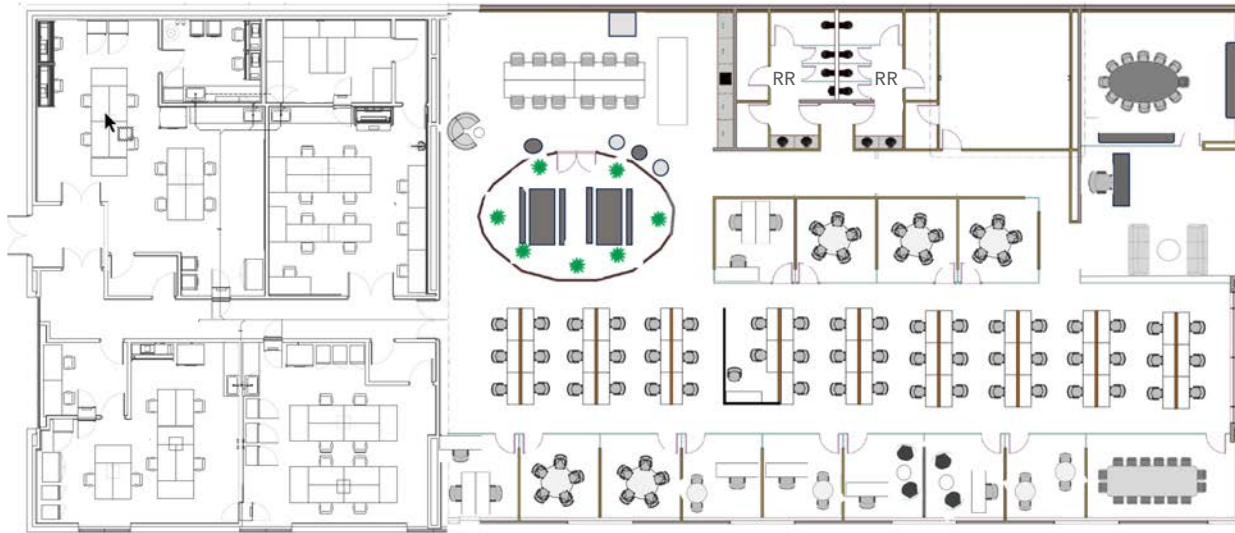
LIC N° 02192983

KIDDER.COM



**km** Kidder  
Mathews

# FLOOR PLAN



FLOOR PLAN NOT TO SCALE

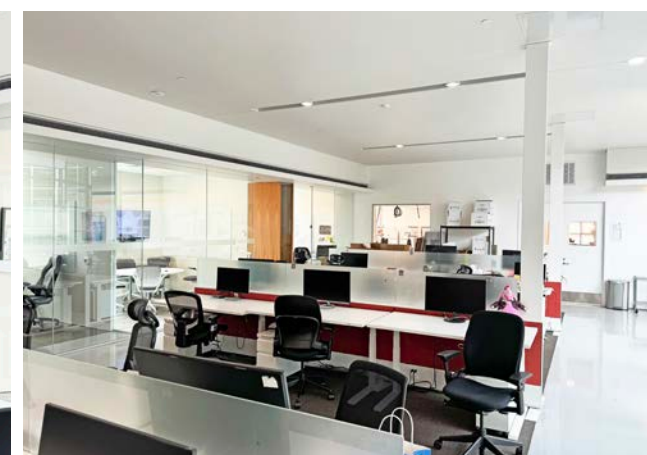
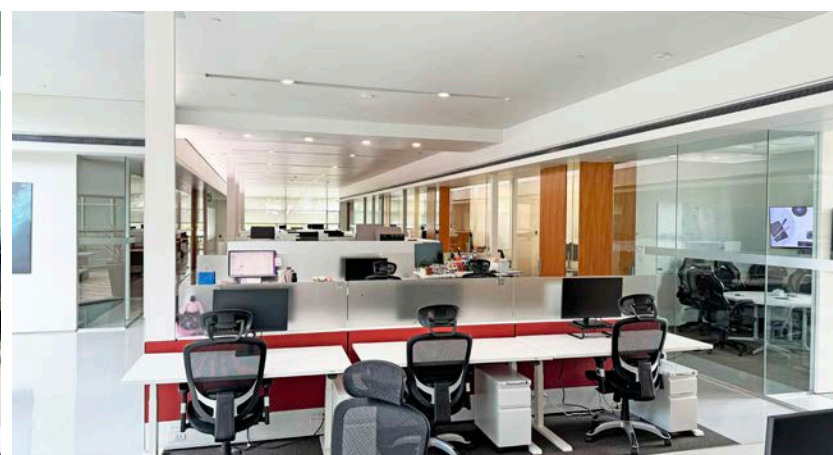
## PROPERTY HIGHLIGHTS

- One (1) twelve person board room
- One (1) ten person conference room
- Six (6) small conference rooms
- Fifty-four (54) seats
- Six (6) private offices



[KIDDER.COM](http://KIDDER.COM)

This information supplied herein is from sources we deem reliable. It is provided without any representation, warranty, or guarantee, expressed or implied as to its accuracy. Prospective Buyer or Tenant should conduct an independent investigation and verification of all matters deemed to be material, including, but not limited to, statements of income and expenses. Consult your attorney, accountant, or other professional advisor.



**KIDDER.COM**

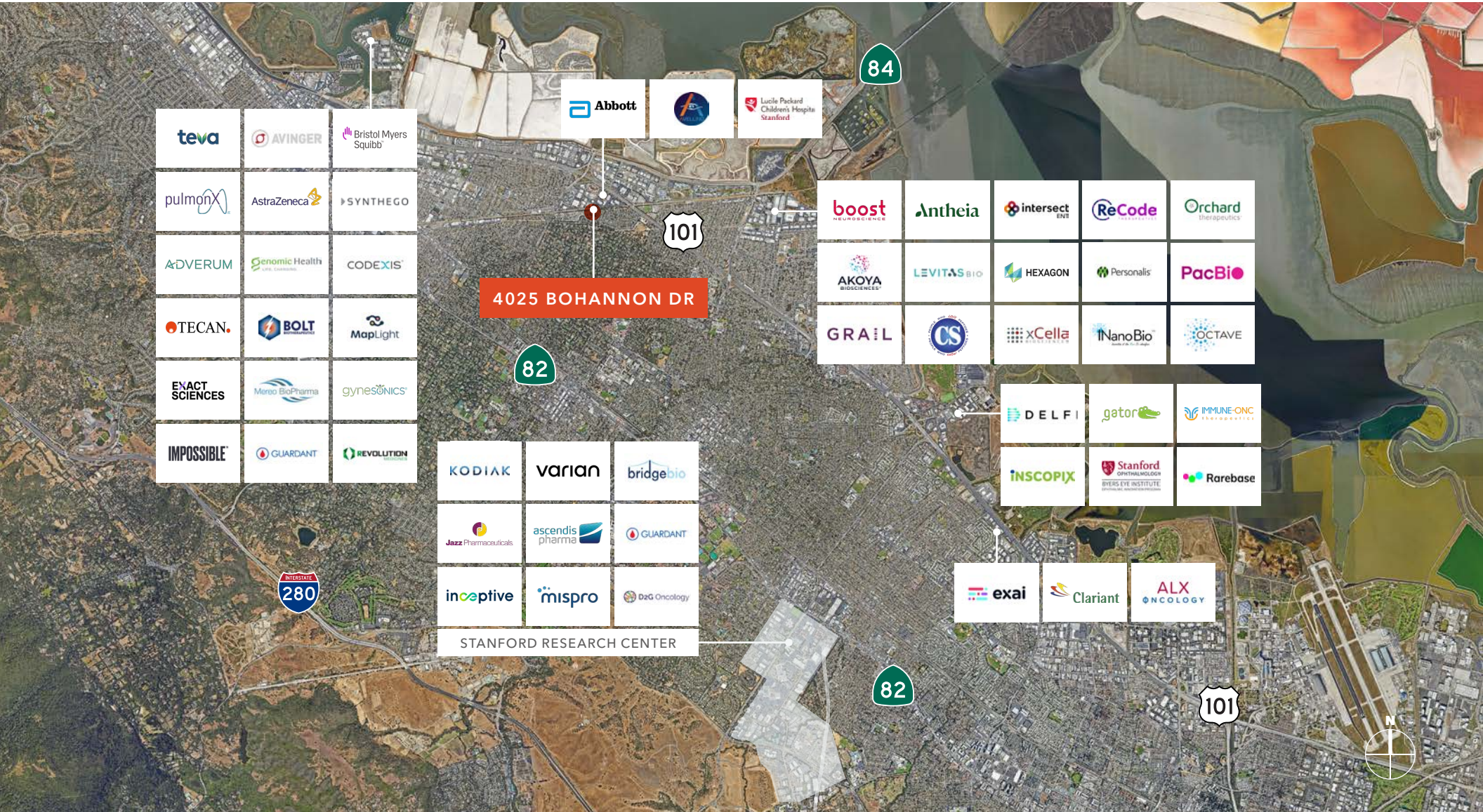
This information supplied herein is from sources we deem reliable. It is provided without any representation, warranty, or guarantee, expressed or implied as to its accuracy. Prospective Buyer or Tenant should conduct an independent investigation and verification of all matters deemed to be material, including, but not limited to, statements of income and expenses. Consult your attorney, accountant, or other professional advisor.



**KIDDER.COM**

This information supplied herein is from sources we deem reliable. It is provided without any representation, warranty, or guarantee, expressed or implied as to its accuracy. Prospective Buyer or Tenant should conduct an independent investigation and verification of all matters deemed to be material, including, but not limited to, statements of income and expenses. Consult your attorney, accountant, or other professional advisor.





teva	AVINGER	Bristol Myers Squibb
pulmonX	AstraZeneca	SYNTHEGO
A&DVERUM	Genomic Health	CODEXIS
TECAN	BOLT	MapLight
EXACT SCIENCES	Mereo BioPharma	gynesonics
IMPOSSIBLE	GUARDANT	REVOLUTION

KODIAK	varian	bridgebio
Jazz Pharmaceuticals	ascendis pharma	GUARDANT
inceptivo	mispro	D2G Oncology

STANFORD RESEARCH CENTER

boost	Antheia	intersect ENT	ReCode	Orchard Therapeutics
AKOYA BIOSCIENCES	LEVITAS BIO	HEXAGON	Personalis	PacBio
GRAIL	CS	xCella	NanoBio	OCTAVE

DELFI	gator	IMMUNE ONC
INSCOPIX	Stanford Ophthalmology	Rarebase

exai	Clariant	ALX ONCOLOGY
------	----------	--------------