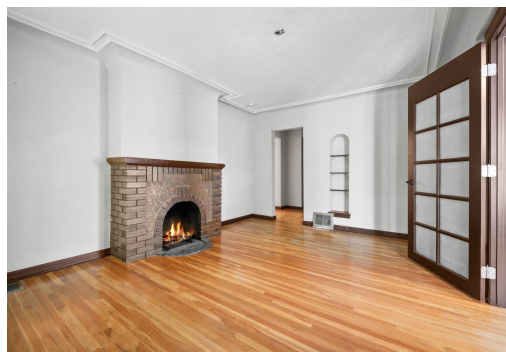
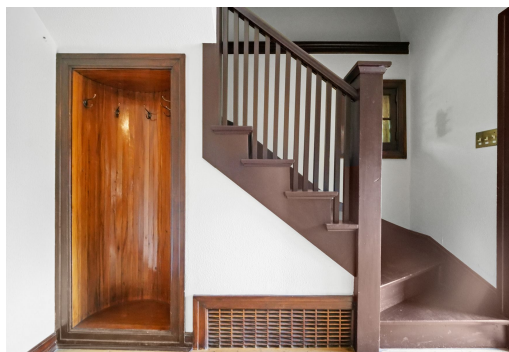


CHARMING BRICK HOME

1592 S 1100 E, Salt Lake City, UT 84105



Offered at \$980,000

This expansive house turned commercial at approximately 4,686 square feet offers for a thoughtfully designed office, retail or business. The charming exterior features a brick construction, creating a warm and inviting aesthetic. Upon entering, you are greeted by a spacious entryway with wooden accents, leading to an inviting staircase that adds architectural interest. The interior boasts a spacious layout with hardwood flooring throughout, creating a cohesive and refined ambiance. The living room features a fireplace, providing a cozy and welcoming gathering space. Hardwood floors continue into the various rooms, complemented by a brick accent wall that adds depth and character. The flexible floor plan allows for various configuration possibilities to suit your needs. Each room provides a generous amount of space, with ample natural light enhancing the overall feel. This beautiful home is located in the desirable Sugar House area, offering a rare find in the neighborhood. The property was previously used as a day spa. With multiple entrances this home presents endless possibilities for your business.



WILLIAM OLSON
Sales Associate
M: 801.580.5556
william.olson@cbrealty.com

