

**FOR LEASE OR SALE**  
**28,952 SF**



**WOOD DALE, IL**

**725 EDGEWOOD AVENUE**

**LEASE RATE**  
Subject To Offer

**COMMENTS**

- Q3 2024 Availability
- Small Yard Space
- Close Proximity to O'Hare, I-90, I-290, I-294, & IL-390
- Located within Established Industrial Park
- Dynamic Office Layout
- Low DuPage County Taxes
- Functioning Single-Tenant Building
- Strong Surrounding Labor Pool
- Professionally Owned and Managed

**BUILDING DETAILS**

Building Size	28,952 SF
Office Size	2,771 SF
Clear Height	19'
Loading	2 Interior Loading Doors 2 Drive-in Door
Power	400-Amp, 120/140-Volt Service Additional Power Available Upon Request
Parking	23 Spaces
Sprinkler	Wet System

Brokered by:

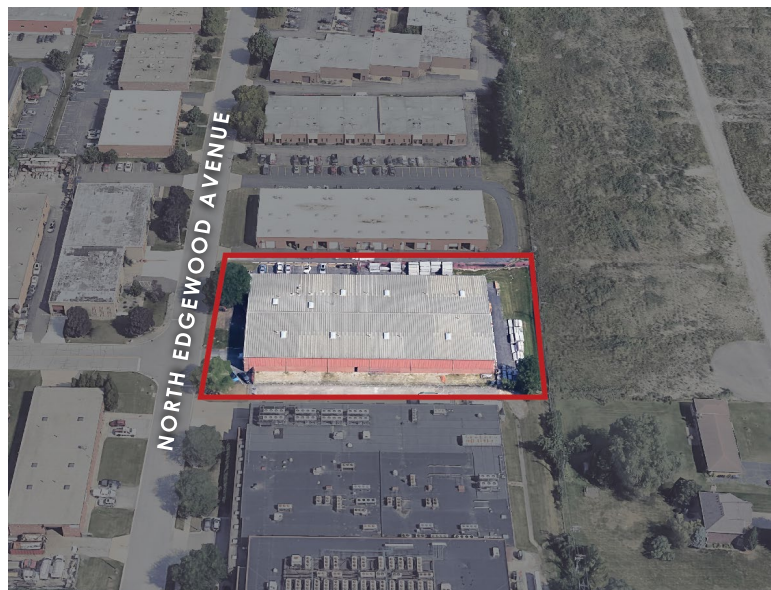
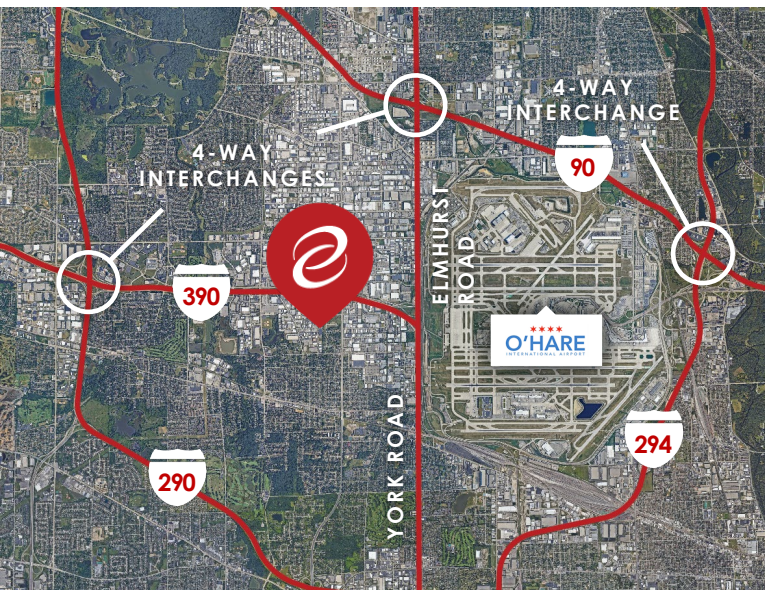
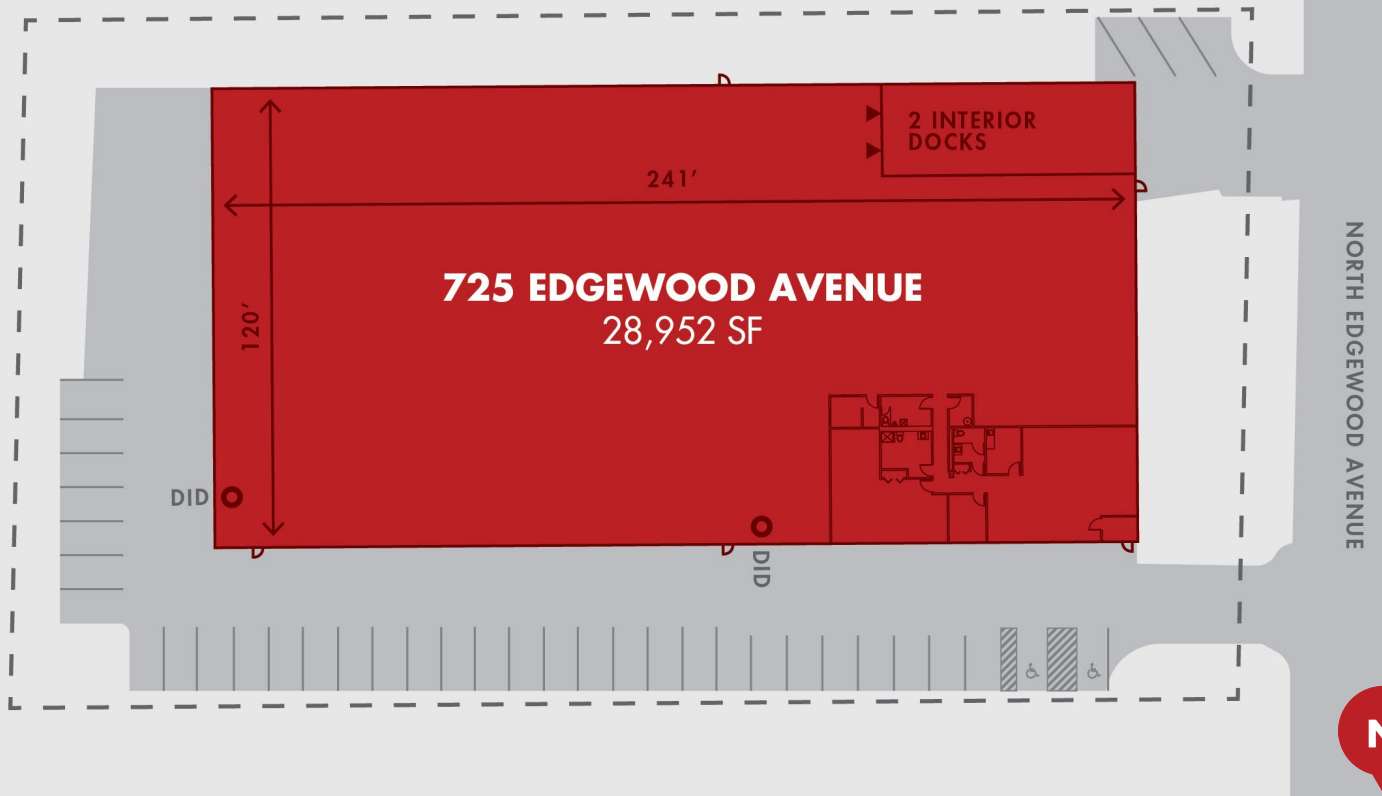


Owned & Managed by:



# FOR LEASE OR SALE

## 28,952 SF



**JOE BRONSON**

NAI Hiffman  
jbronson@hiffman.com  
630-317-0725

**PADDY DWYER**

NAI Hiffman  
pdwyer@hiffman.com  
630-317-0794

**MATT KNOFF**

Venture One Real Estate  
MattK@VentureOneRE.com  
612-462-4859

