

High-end office space in an incredible Central Valley location

Colliers



Office For Lease

Lease Rate:

\$17.50 SF

Full service - excluding
in-suite janitorial

Contact:

Marcy Pitman

Associate Broker
+1 801 947 8330
marcy.pitman@colliers.com

Don Enlow, SIOR

Executive President
+1 801 947 8388
don.enlow@colliers.com

Carson Enlow

Client Services Specialist
+1 801 888 3107
carson.enlow@colliers.com

238 West 4860 South Murray, Utah 84107

Property Details

- Available: 2,510 SF
 - Foyer with digitally secured entrance
 - 2 Large Offices (with potential for more)
 - Spacious Conference Room
 - Open Space
 - Break Area
 - Large IT Room
 - Private Restroom
- This space lends itself to a variety of uses including secured tech space, medical customer service and much more
- Convenient access to and from I-15 via 4500 South and 5300 South
- Surrounded by ample amenities and retailers
- Less than 1 mile from Murray Central Frontrunner & Trax Stations
- Parking: 3.2/1,000

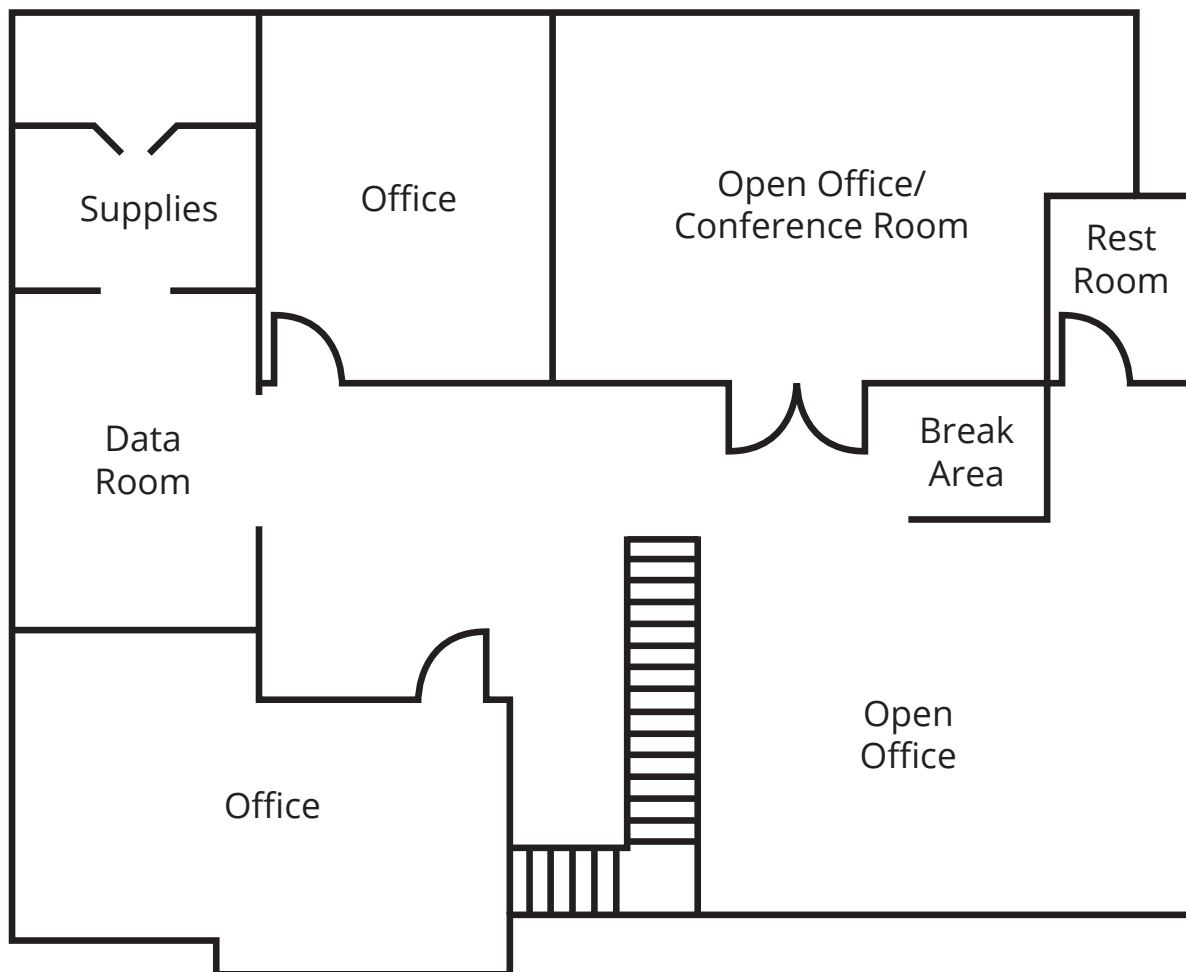
238 West 4860 South | Murray UT

Available:
2,510 SF



Floor Plan

For Lease



Demographics

Population



1 mi	15,912
3 mi	151,082
5 mi	405,217

Median HHI



1 mi	\$55,958
3 mi	\$63,513
5 mi	\$71,395

Households



1 mi	6,492
3 mi	59,198
5 mi	153,741

Median Age



1 mi	31.7
3 mi	34.9
5 mi	34.8



Colliers

6440 S. Millrock Dr., Suite 500
Salt Lake City, UT 84121
Main: +1 801 947 8300
colliers.com

This document has been prepared by Colliers International for advertising and general information only. Colliers International makes no guarantees, representations or warranties of any kind, expressed or implied, regarding the information including, but not limited to, warranties of content, accuracy and reliability. Any interested party should undertake their own inquiries as to the accuracy of the information. Colliers International excludes unequivocally all inferred or implied terms, conditions and warranties arising out of this document and excludes all liability for loss and damages arising there from. This publication is the copyrighted property of Colliers International and/or its licensor(s). ©2023. All rights reserved.

Marcy Pitman

Associate Broker
+1 801 947 8330
marcy.pitman@colliers.com

Don L. Enlow, SIO

Executive Vice President
+1 801 947 8388
don.enlow@colliers.com

Carson Enlow

Client Services Specialist
+1 801 888 3107
carson.enlow@colliers.com