

OFFICE / RETAIL / MEDICAL FOR SALE/LEASE 6,000 SQ. FT.



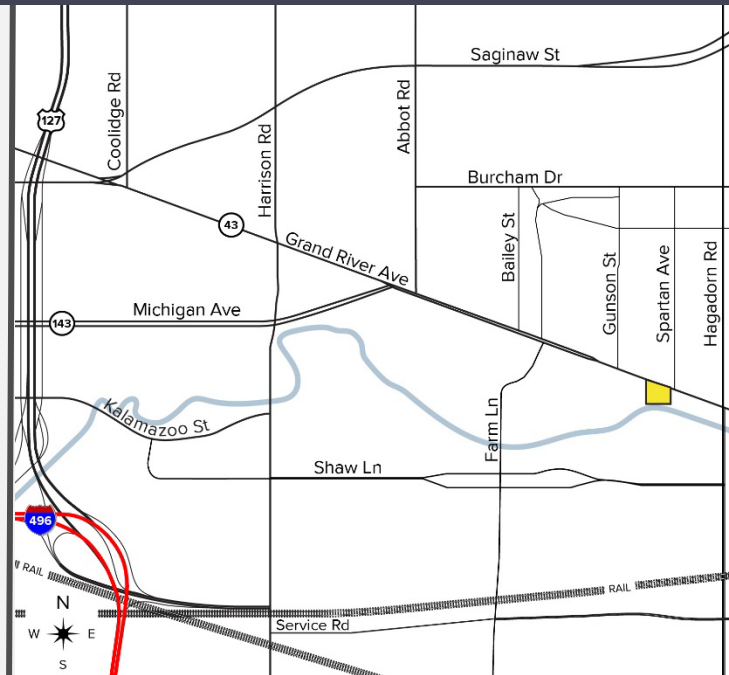
1234 E. GRAND RIVER AVENUE EAST LANSING, MICHIGAN

**NEWLY RENOVATED
TURN-KEY BUILDING**

**PREMIUM LOCATION ON
MICHIGAN STATE CAMPUS**

**GREAT OPPORTUNITY FOR
OFFICE, MEDICAL, OR RETAIL
USERS**

**3-STORIES WITH 17 PARKING
SPACES AND EV ZONING**



For more information, please contact:

JEFF HIGGINS
(248) 359 0650
jhiggins@signatureassociates.com

RICHARD PIFER
(248) 799 3158
rpifer@signatureassociates.com



**SIGNATURE
ASSOCIATES**
KNOW SIGNATURE | KNOW RESULTS



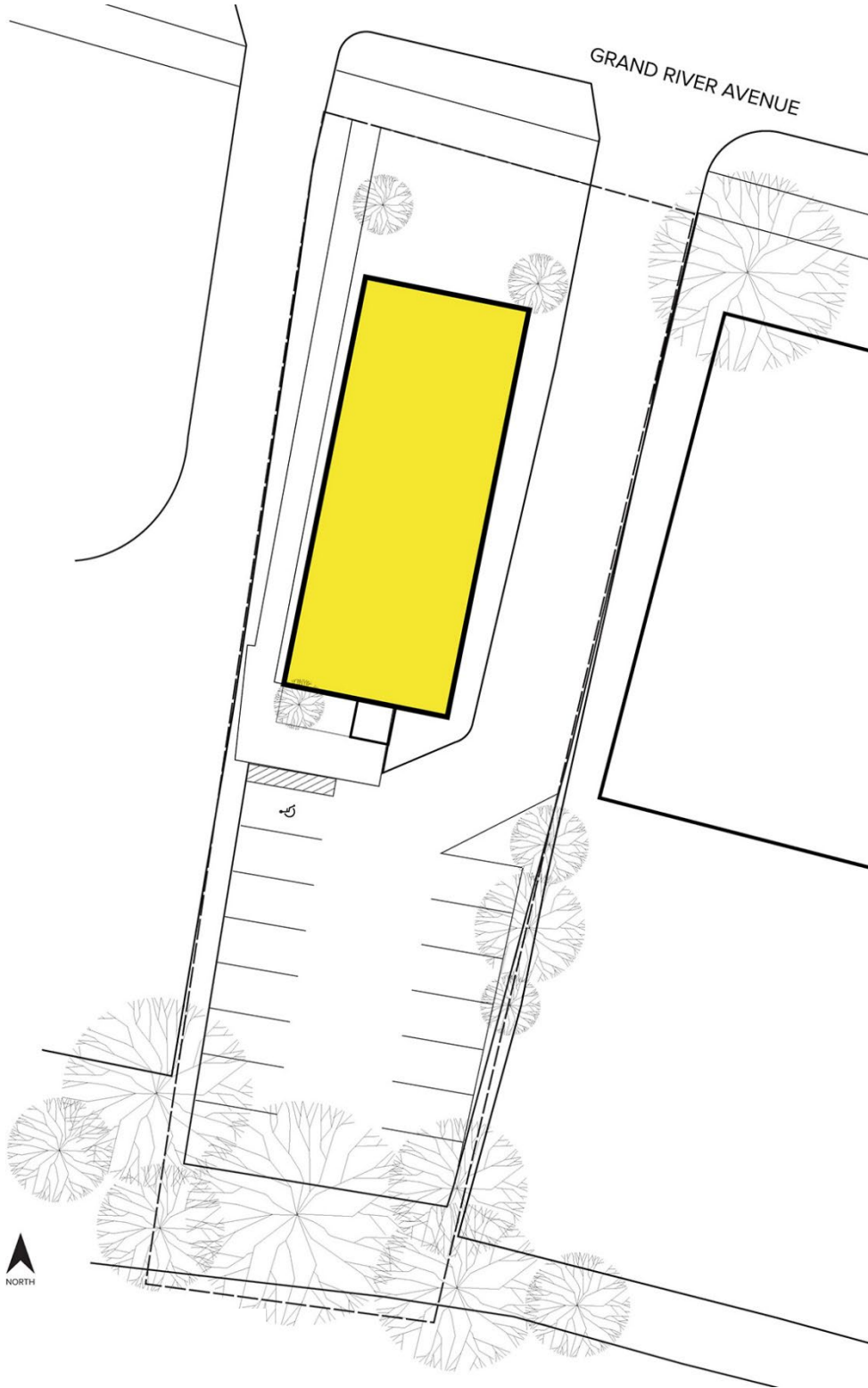
For more information, please contact:

JEFF HIGGINS
(248) 359 0650
jhiggins@signatureassociates.com

RICHARD PIFER
(248) 799 3158
rpifer@signatureassociates.com



SIGNATURE ASSOCIATES
KNOW SIGNATURE | KNOW RESULTS



For more information, please contact:

JEFF HIGGINS
(248) 359 0650
jhiggins@signatureassociates.com

RICHARD PIFER
(248) 799 3158
rpifer@signatureassociates.com



SIGNATURE ASSOCIATES
KNOW SIGNATURE | KNOW RESULTS



For more information, please contact:

JEFF HIGGINS

(248) 359 0650

jhiggins@signatureassociates.com

RICHARD PIFER

(248) 799 3158

rpifer@signatureassociates.com



SIGNATURE ASSOCIATES

KNOW SIGNATURE | KNOW RESULTS