

Move-in ready, Office for lease



13405 Folsom Boulevard, Building 500
Folsom, CA 95630

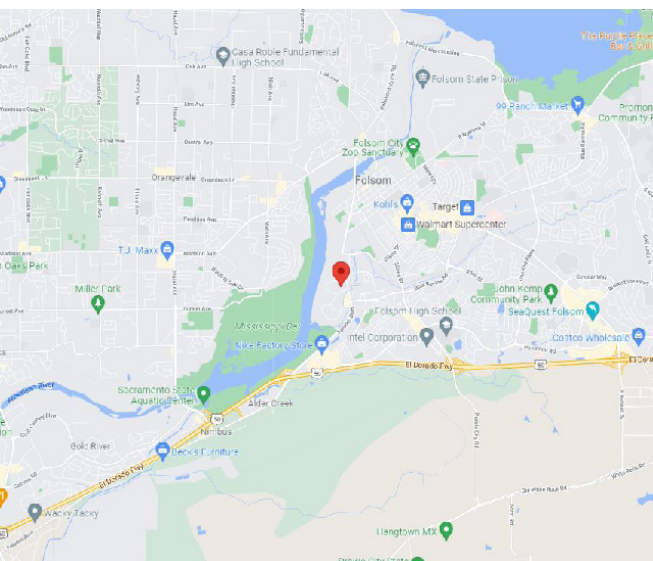


Size: 1,025 sf

Lease Rate: \$ 1.95 per sf

Property Highlights:

- 1,025 s.f. available for lease
- Open office space
- Move-in ready with furniture available for purchase
- Full service lease with common area break room
- Within an office-retail business park
- On-site management
- Located on Folsom Blvd, near Blue Ravine Road
- Abundant on-site parking
- Easy access to Highway 50
- Immediate vicinity of housing, shopping and restaurants

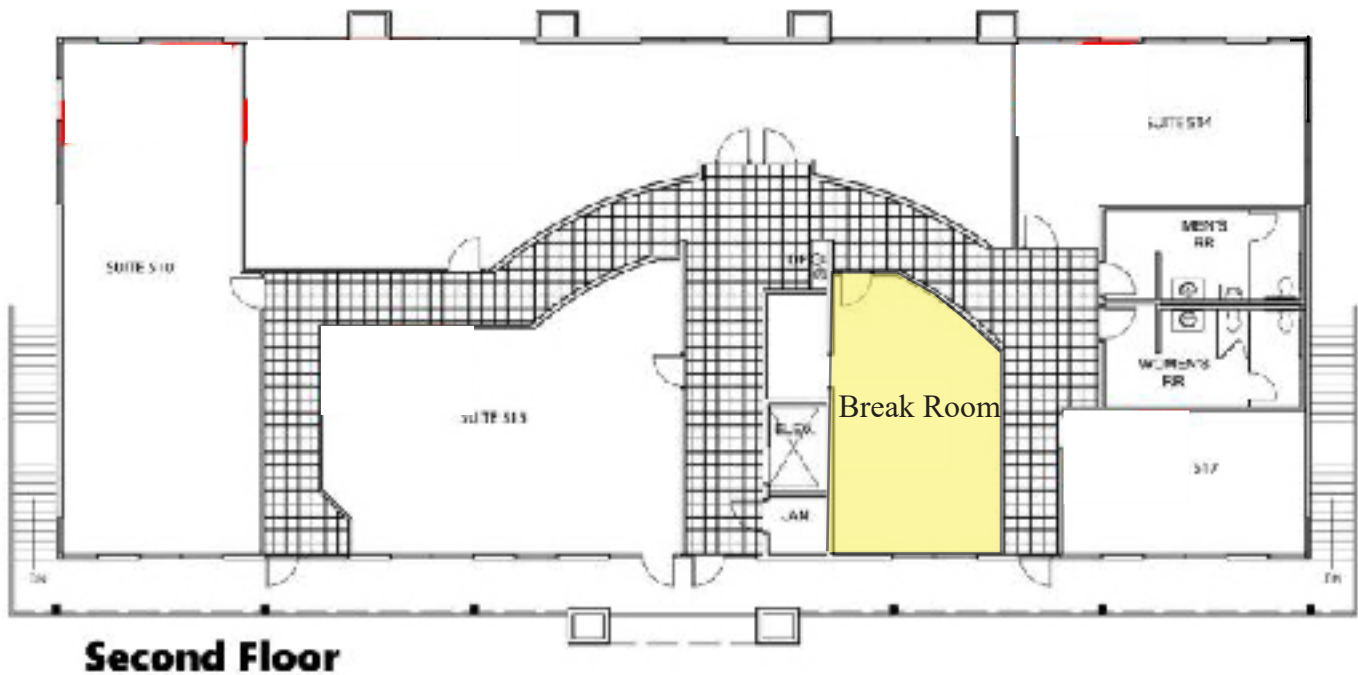
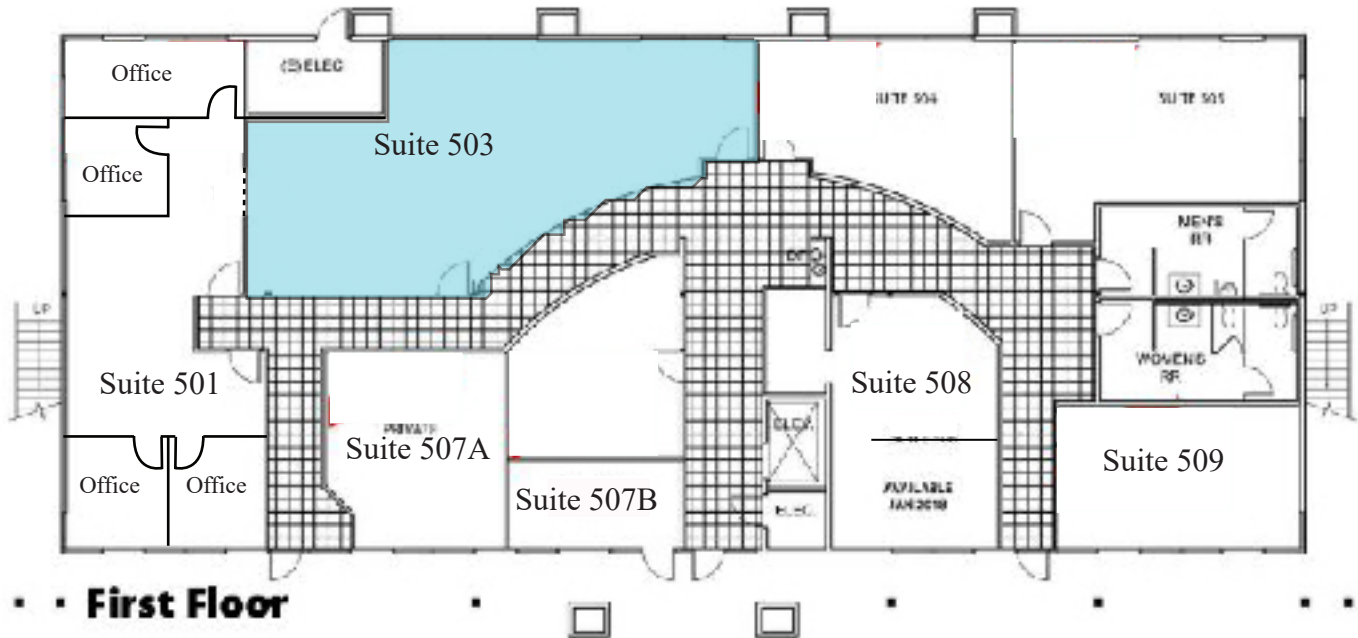


Contact: Ranga Pathak, Broker Associate; (916)201-9247; CA BRE 01364897; ranga.pathak@norcalgold.com
RE/MAX Gold, 2998 Douglas Boulevard, Suite 125, Roseville, CA 95661 Tel:(916)218-7500; Fax: (916)218-7510

The information contained herein including square footages has been obtained from sources deemed to be reliable. RE/MAX Gold has not verified and makes no guarantees, warranties or representations regarding the accuracy of the information. You need to conduct a careful, independent evaluation of the property to establish its suitability for your purposes.

Move-in ready, Office for lease

13405 Folsom Boulevard, Building 500
Folsom, CA 95630



Move-in ready, Office for lease



13405 Folsom Boulevard, Building 500
Folsom, CA 95630



Property Views